



Results of the last data collection

Küllli Kori & Heilo Altin

Results of the last data collection

- Data collection during admission
- First-year dropout
- Data collection at the beginning of the first semester (2014 students)
- Data collection at the beginning of third semester (2013 students)

01010100101001000100
11010010010010100100
01010100101010010010
00101001010101010101
11010100101001010010
10101010010101001010
01010101001001010010
10101010010100100101
10100101001001010101
01010010101010010101
01001010010010010010
01010010010100100101
01010101001010100100
10111010010101010101
11010010101110110010
1100100100100100001
01010101010101010101
01010010100100100100
10011110010010100010
10001001000101001010
10101010101010101010
01010010100100100100
10101010010100100010
10101010100101010101
10100100101010110100
10101010101010001010
101010101010111101
10101010101001001000
010101010010100101
10101010010101010110
010001010101011101
1010101010101010101
1010101010101010101



Euroopa Liit
Euroopa
Regionaalarengu Fond

Admission

- Summer 2014
- In Admissions Information System (SAIS)
- Candidates background information.
- How much the following factors have influenced you to candidate ICT related curricula? (5-point scale)
 - Prior experiences in ICT field
 - Job opportunities and salaries in ICT field
 - Personal development that ICT field offers
 - Fast development on ICT field
 - Wish to continue prior ICT studies
 - Learning environment in the university
- The factors were found with factor analysis based on last year data collections

0101010010100100010
11010010010010100100
01010100101010010010
0010100101010101010
11010100101001010010
10101010010101001010
01010101001001010010
10101010010100100101
10100101001001010101
01010010101010010101
01001010010010010010
01010010010100100101
01010101001010100100
10111010100101010101
11010010101110110010
11001001010010010001
01010101010101010101
01010010100100100100
10011110010010100010
10001001000101001010
10101010101010101010
01010010100100100100
10101010010100100010
10101010101001010101
10100100101010110100
10101010101010001010
101010101010111101
10101010101001001000
0101010100101000101
10101010010101010110
100010101010101101
1010101010101010101
1010101010101010101
1010101010101010101



Euroopa Liit
Euroopa
Regionaalarengu Fond

Data collection

- University of Tartu (UT)
 - Computer Science
 - Computer Engineering
- Tallinn University of Technology (TUT)
 - Computer and Systems Engineering
 - Business Information Technology
 - Informatics
- Estonian Information Technology College (EITC)
 - IT Systems Administration
 - IT Systems Development
 - Information System Analysis
- Tallinn University (TU)
 - Computer Science
 - Applied Computer Science

0101010010100100010
11010010010010100100
01010100101010010010
00101001010101101010
11010100101001010010
10101010010101001010
01010101001001010010
10101010010100100101
10100101001001010101
01010010101010010101
01001010010010010010
01010010010100100101
01010101001010100100
10111010100101010101
11010010101110110010
11001001010010010001
01010101010101010101
01010010100100100100
10011110010010100010
10001001000101001010
10101010101010101010
01010010100100100100
10101010010100100010
10101010101001010101
10100100101010110100
10101010101010001010
101010101010111101
10101010101001001000
01010101010010100101
10101010010101010110
01001010101011101
1010101010101010101
1010101010101010101



Candidates

- Together 3037 applications for 4 universities
- We do not have all the candidates' names, so we cannot say how many candidates applied to more than one curriculum or university.
- 793 students started ICT studies in the four universities

University	Candidates	Accepted	Competition	Competition in 2013
UT	490	165	3.0	2.88
TUT	1543	356	4.3	2.18 + ?
EITC	696	166	4.2	4.55
TU	203	106	1.9	?
Total	3037	793	3.8	3.11

In UT there were more positions than students who started studying:
in computer science 150 positions, but 132 students;
in computer engineering 50 positions, but 32 students.

0101010010100100010
11010010010010100100
01010100101010010010
0010100101010101010
11010100101001010010
10101010010101001010
010101001001001010010
10101010010100100101
10100101001001010101
01010010101010010101
01001010010010010010
01010010010100100101
01010100101010010010
10111010010101010101
11010010101110110010
11001001010010010001
01010101010101010101
01010010100100100100
1001111001001000010
10001001000101001010
10101010101010101010
01010010100100100100
10101010010100100010
10101010100101010101
10100100101010110100
10101010101010001010
101010101010111101
10101010101001001000
01010101010010100101
10101010010101010110
100010101010101101
1010101010101010101
1010101010101010101



Male and female students

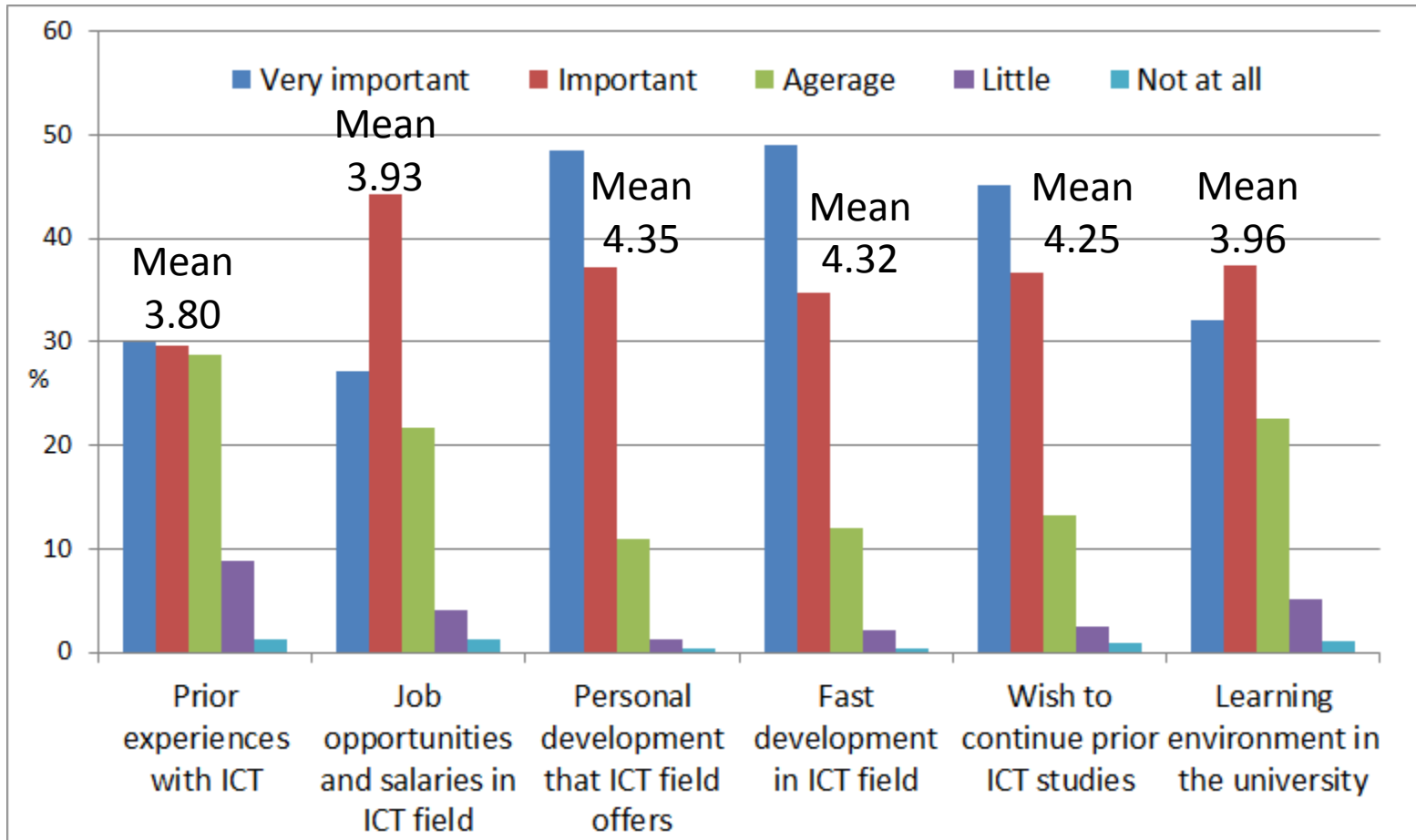
- 21.5 % of the candidates were female
- 23.2% of the ICT students who started studying are female
- Last year 25% of the students were female
- Business Information Technology curriculum (in TUT) is not pure ICT and there are more female students – 43.6%.

01010100101001000100
11010010010010100100
01010100101010010010
001010010101010101010
11010100101001010010
10101010010101001010
01010100100100100100
10101010010100100101
10100101001001010101
01010010101010010101
01001010010010010010
01010010010100100101
010101001010100100
10111010010101010101
11010010101110110010
1100100100100100001
01010101010101010101
01010010100100100100
10011110010010100010
10001001000101001010
10101010101010101010
01010010100100100100
10101010010100100010
10101010101001010101
10100100101010110100
10101010101010001010
101010101010111101
10101010101001001000
0101010100101000101
10101010010101010110
10101010010101010110
1010101010101010101
1010101010101010101
1010101010101010101



Euroopa Liit
Euroopa
Regionaalarengu Fond

Factors that influenced candidates



0101010010100100010
 11010010010010100100
 0101010001010100010010
 001010010101010101010
 11010100101000100010
 101010100101010001010
 01010101001001010010
 101010100101000100101
 10100101001001010101
 01010010101010010101
 01001010010010010010
 01010010010100100101
 01010101001010100100
 10111010100101010101
 11010010101110110010
 11001001010010010001
 01010101010101010101
 01010010100100100100
 1010101001000100100
 100111100100101000010
 10001001000101001010
 10101010101010101010
 01010010100100100100
 10101010010100100010
 10101010100101010101
 10100100101010110100
 10101010101010001010
 101010101010111101
 10101010101001001000
 0101010100101000101
 10101010010101010110
 010010101010101101
 010101010101010101
 010101010101010101

Dropout in first year

- Students who started ICT studies in fall 2013 in UT, TUT and EITC

University	Dropout rate
UT	25.5%
TUT	33.2%
EITC	35.8%
Total	32.2%

0101010010100100010
11010010010010100100
01010100101010010010
0010100101010101010
11010100101001010010
10101010010101001010
01010101001001010010
10101010010100100101
10100101001001010101
01010010101010010101
01001010010010010010
01010010010100100101
01010101001010100100
10111010100101010101
11010010101110110010
1100100100010010001
01010101010101010101
01010010100100100100
10011110010010100010
10001001000101001010
10101010101010101010
01010010100100100100
10101010010100100010
10101010101001010101
10100100101010110100
10101010101000101010
101010101010111101
10101010101001001000
010101010010100101
10101010010101010110
100010101010111101
1010101010101010101
1010101010101010101
1010101010101010101



Euroopa Liit
Euroopa
Regionaalarengu Fond

Data collection at the beginning of the studies

- September and October
- 651 first year students:
 - 140 from UT (84.8%)
 - 301 from TUT (84.5%) + 30 from other ICT related curricula (Mechatronics, Electronics and Telecommunications)
 - 123 from EITC (74.1%)
 - 53 from TU (50%)

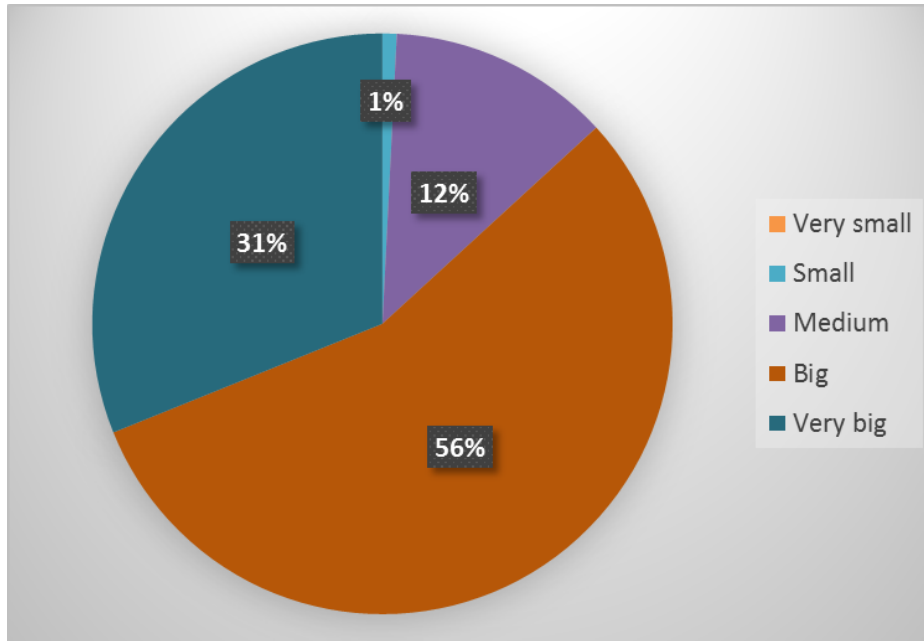
0101010010100100010
110100100100100100
01010100101010010010
0010100101010101010
1101010010100100010
10101010010101001010
01010101001001010010
10101010010100100101
10100101001001010101
01010010101010010101
01001010010010010010
01010010010100100101
010101001010100100
10111010010101010101
110100101011010010
1100100100010010001
01010101010101010101
01010010100100100100
1001110010010100010
10001001000101001010
10101010101010101010
01010010100100100100
10101010010100100010
10101010100101010101
10100100101010110100
10101010101010001010
101010101010111101
10101010101001001000
01010101001010010101
10101010010101010110
01001010101011011
1010101010101010101
1010101010101010101
1010101010101010101



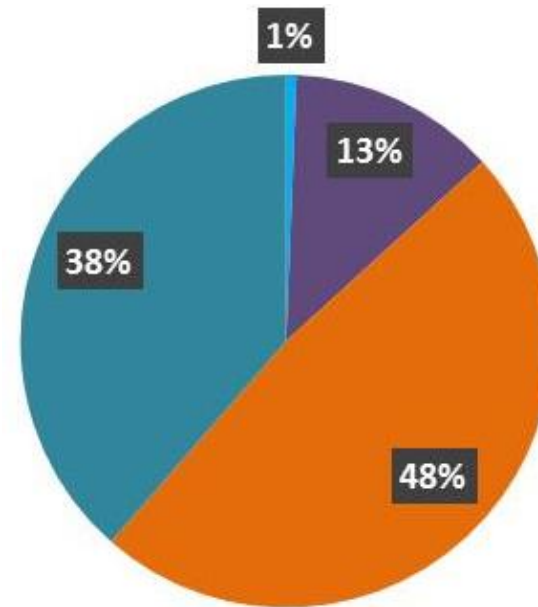
Euroopa Liit
Euroopa
Regionaalarengu Fond

How large is students' interest in ICT?

2013



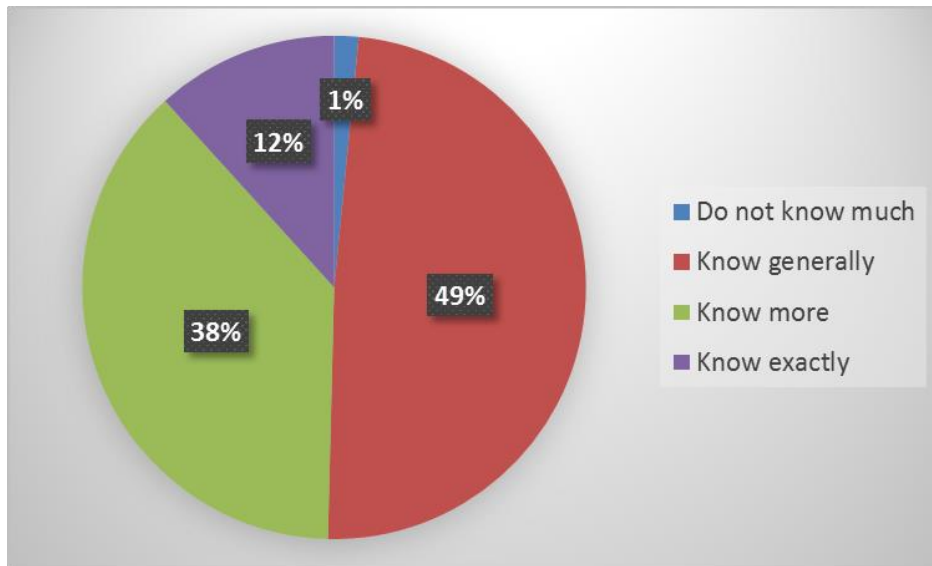
2014



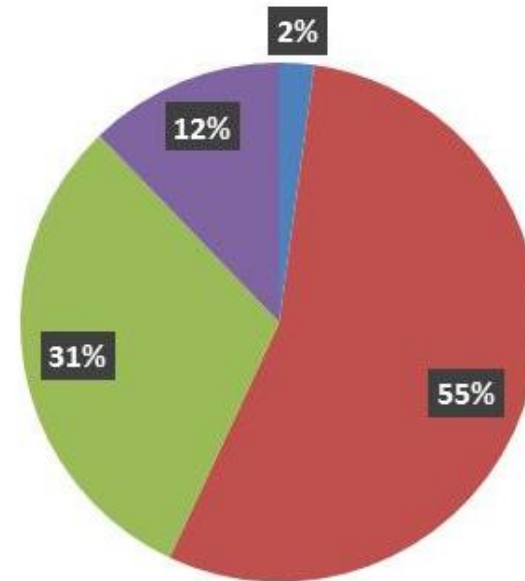
0101010010100100010
1101001001001010010
01010100101010010010
0010100101010101010
11010100101001010010
10101010010101001010
0101010010010010010
10101010010010010101
10100101001001010101
01010010101010010101
01001010010010010010
01010010010100100101
01010100101010100100
10111010010101010101
11010010101110110010
1100100100010010001
01010101010101010101
01010010100100100100
10011110010010100010
10001001000101001010
10101010101010101010
01010010100100100100
10101010010100100010
10101010100101010101
10100100101010110100
10101010101010001010
101010101010111101
10101010101001001000
010101010010100101
101010100101010101
100010101010101101
10101010101010101
10101010101010101

How informed are students about the curriculum they are studying?

2013



2014

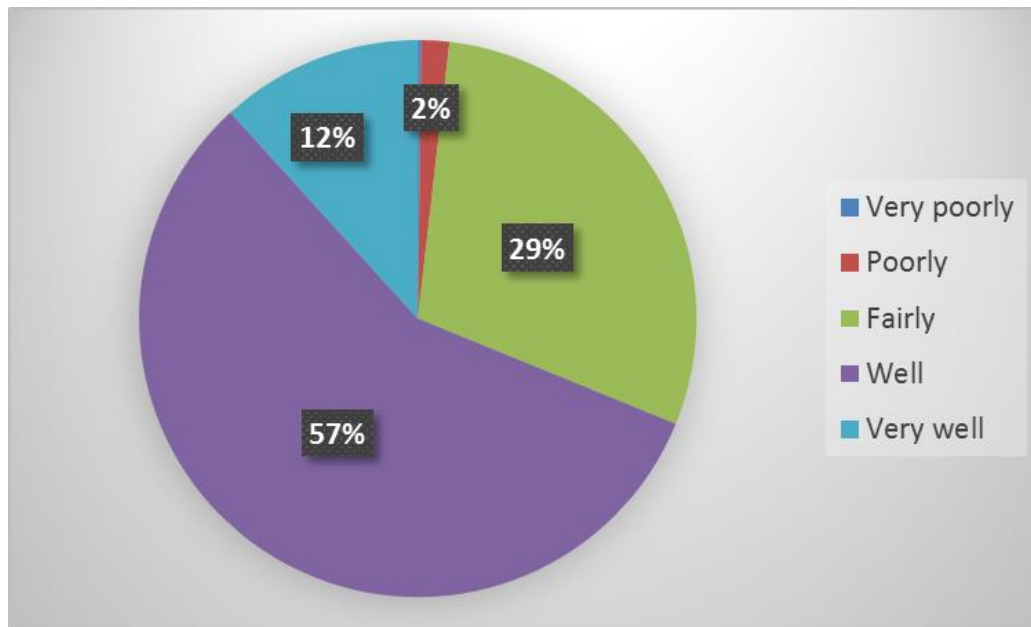


01010100101001000100
11010010010010100100
01010100101010010010
00101001010101101010
11010100101001010010
10101010010101001010
01010101001001010010
10101010010100100101
10100101001001010101
01010010101010010101
01001010010010010010
01010010010100100101
01010101001010100100
10111010100101010101
11010010101110110010
11001001010010010001
01010101010101010101
01010010100100100100
01010101001010100100
10011110010010100010
10001001000101001010
10101010101010101010
01010010100100100100
10101010010100100010
10101010100101010101
10100100101010110100
10101010101010001010
101010101010111101
10101010101001001000
0101010100101000101
10101010010101010110
100010101010101101
1010101010101010101
1010101010101010101

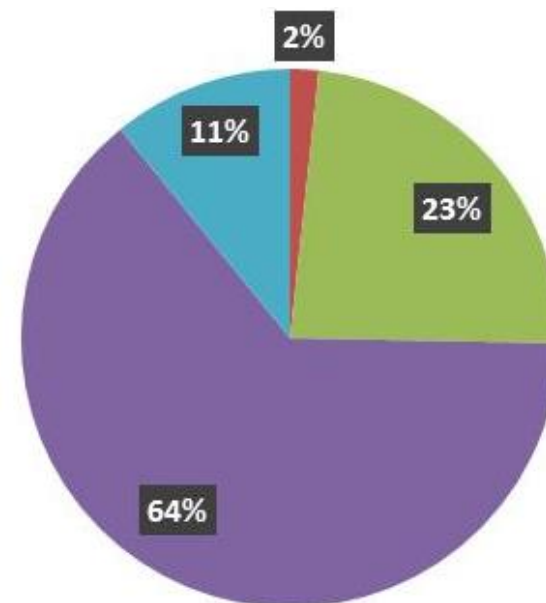


How well does the curriculum meet student expectations?

2013



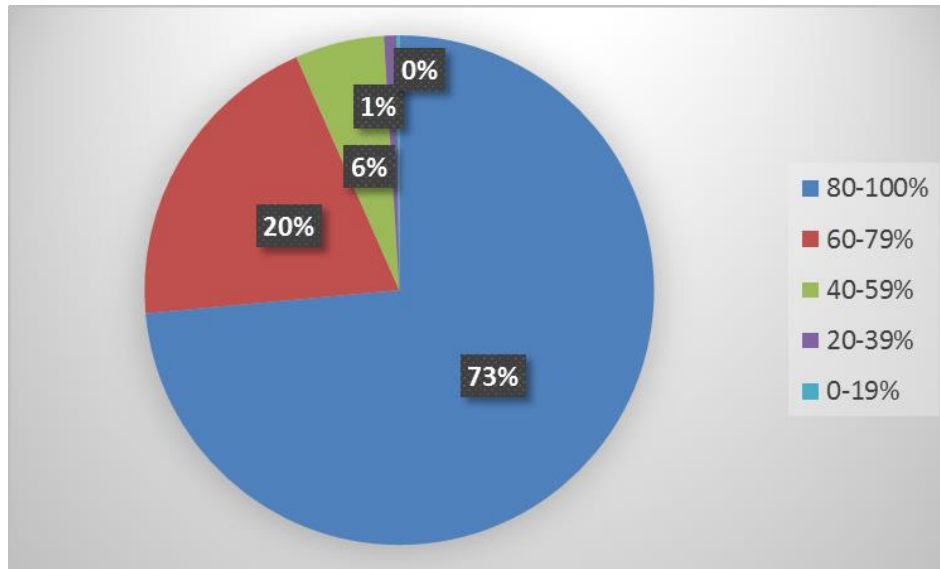
2014



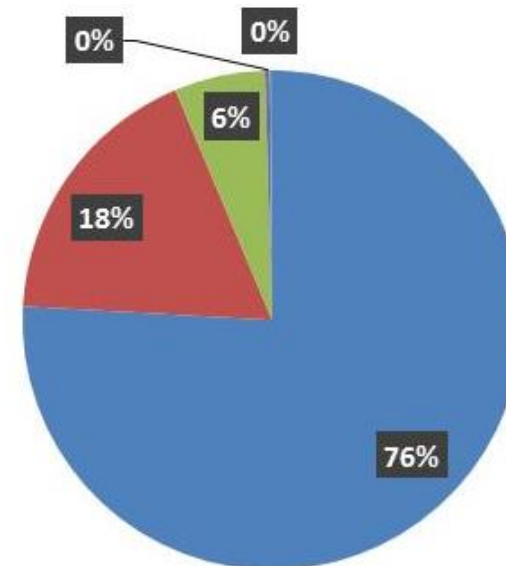
0101010010100100010
1101001001001010010
01010100101010010010
0010100101010101010
11010100101001010010
10101010010101001010
0101010010010010010
10101010010100100101
10100101001001010101
01010010101010010101
01001010010010010010
01010010010100100101
01010100101010010010
10111010010101010101
11010010101110110010
11001001010010010001
01010101010101010101
01010010100100100100
10011110010010100010
10001001000101001010
10101010101010101010
01010010100100100100
10101010010100100010
10101010100101010101
10100100101010110100
10101010101000101010
101010101010111101
10101010101001001000
0101010100101001001
10101010010101010110
1000101010101101101
1010101010101010101
1010101010100100101

With what probability do students think they will finish their studies?

2013



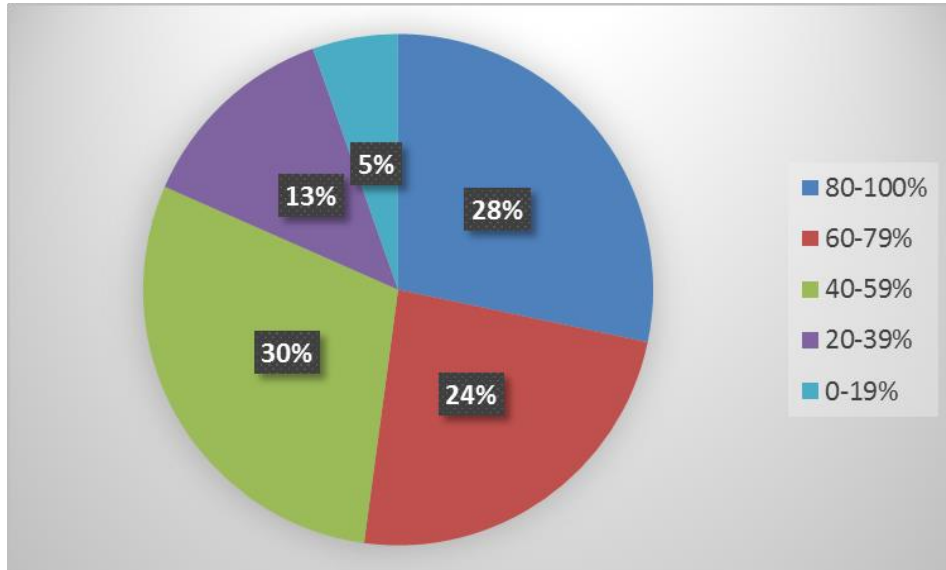
2014



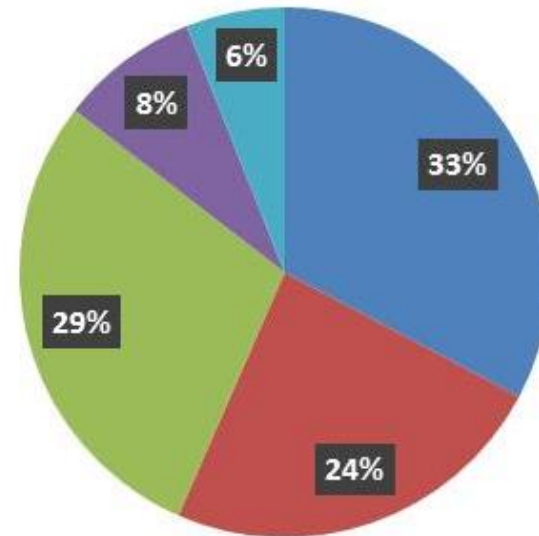
0101010010100100010
11010010010010100100
01010100101010010010
00101001010101101010
11010100101001010010
10101010010101001010
01010101001001010010
10101010010100100101
10100101001001010101
01010010101010010101
01001010010010010010
01010010010100100101
01010100101010010010
10111010100101010101
1101001010110110010
11001001010010010001
01010101010101010101
01010010100100100100
10011100100101000010
10001001000101001010
10101010101010101010
01010010100100100100
10101010010100100010
10101010100101010101
10100100101010110100
10101010101010001010
101010101010111101
10101010101001001000
010101010010100101
101010100101010110
100010101010101101
1010101010101010101
101010101010101001

How large is the probability that students start working during studies?

2013



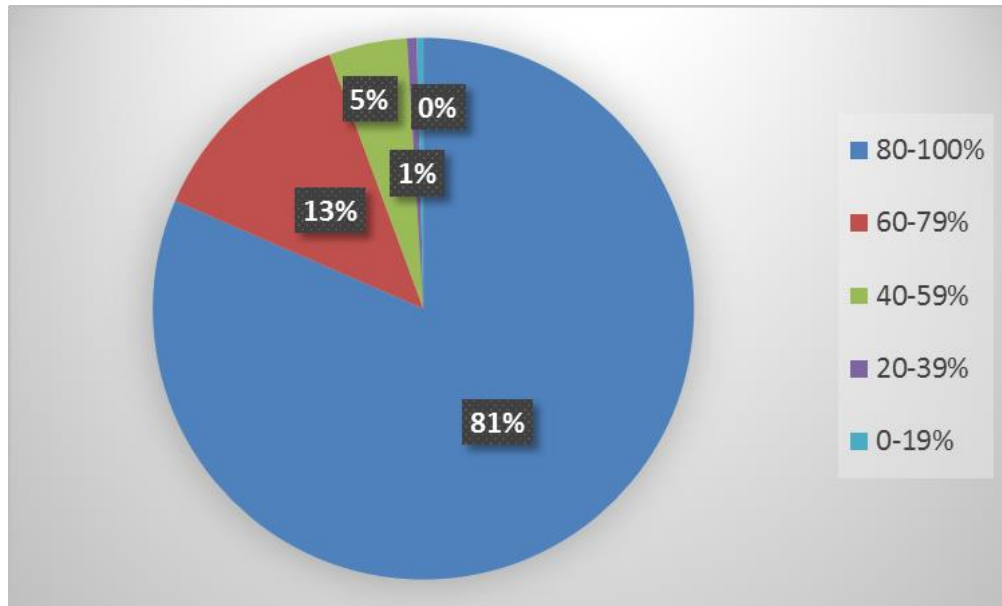
2014



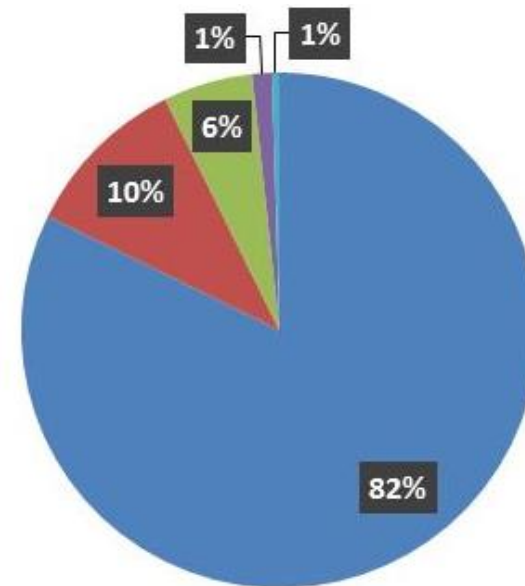
0101010010100100010
1101001001001010010
01010100101010010010
00101001010101101010
11010100101001010010
10101010010101001010
01010101001001010010
10101010010100100101
10100101001001010101
01010010101010010101
01001010010010010010
01010010010100100101
01010101001010100100
10111100100101000010
10001001000101001010
10101010101010101010
01010010100100100100
10101010010100100010
10101010100101010101
10100100101010110100
101010101010001010
101010101010111101
10101010101001001000
0101010100101000101
101010100101010110
10001010101011011
1010101010101010101
1010101010101010101

How large is the probability that students work in ICT field after studies?

2013

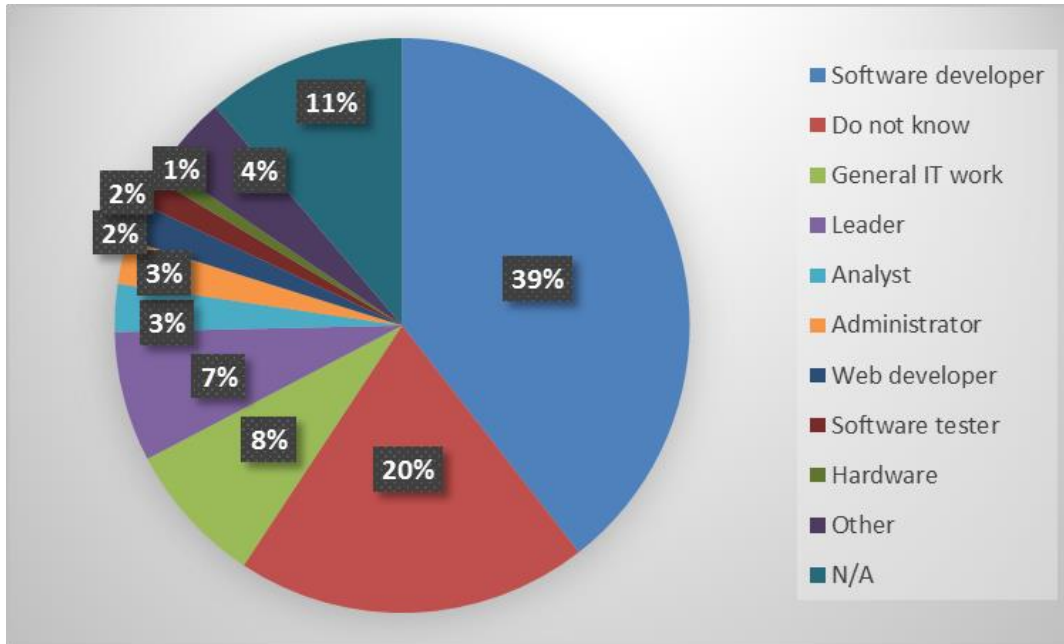


2014

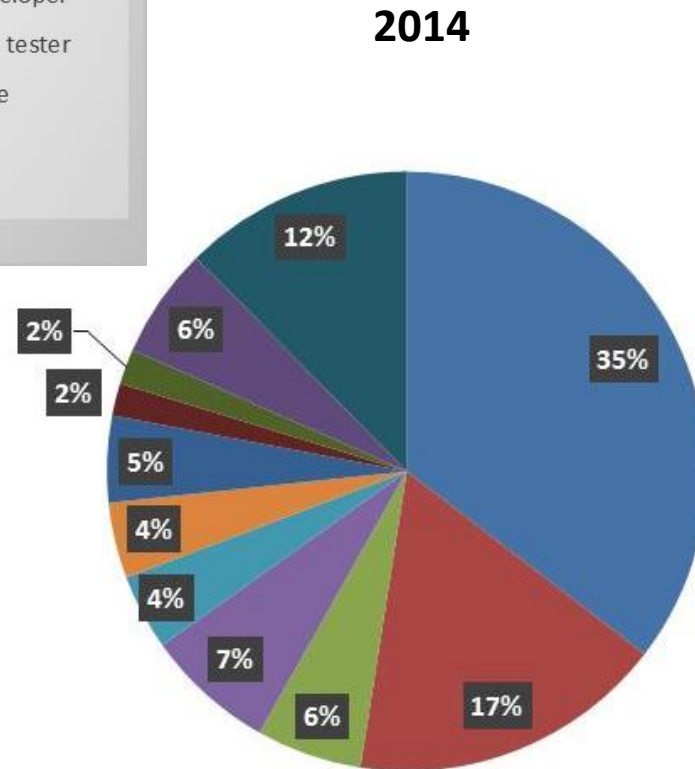


0101010010100100010
1101001001001010010
01010100101010010010
0010100101010101010
11010100101001010010
10101010010101001010
01010101001001010010
10101010010100100101
10100101001001010101
01010010101010010101
01001010010010010010
01010010010100100101
01010100101010010010
10111010100101010101
11010010101110110010
11001001010010010001
01010101010101010101
01010010100100100100
1001110010010100010
10001001000101001010
10101010101010101010
01010010100100100100
10101010010100100010
10101010100101010101
10100100101010110100
10101010101010001010
101010101010111101
10101010101001001000
01010101001010010101
101010100101010110
101010101010101101
1010101010101010101
1010101010101010101

What kind of jobs do students want?



2013

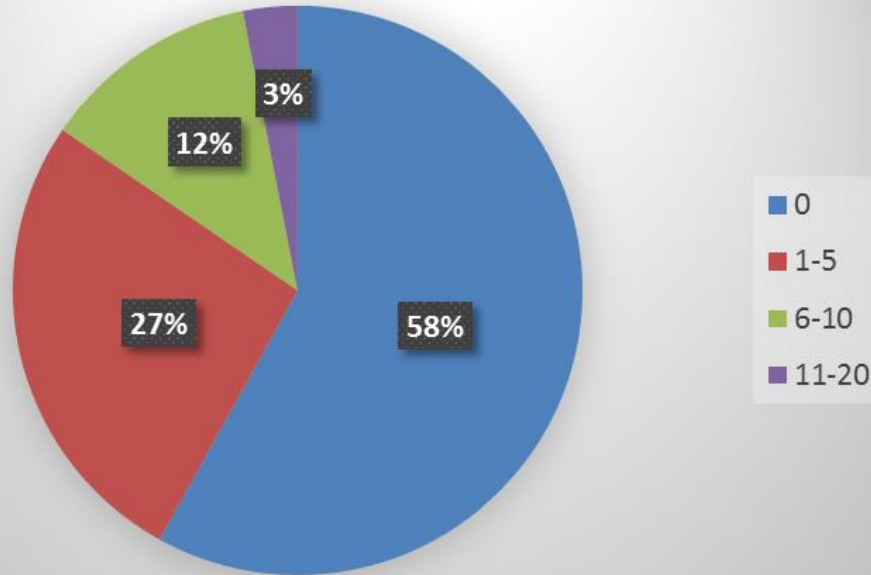


2014

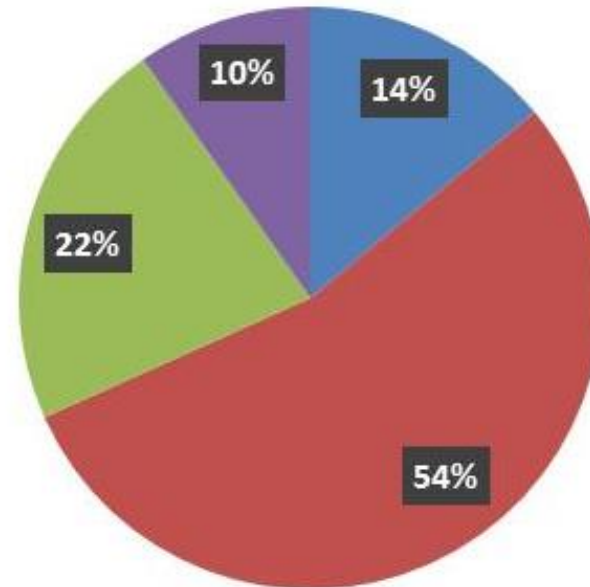
0101010010100100010
1101001001001010010
01010100101010010010
00101001010101101010
11010100101001010010
10101010010101001010
0101010010010010010
1010101001010010010
10100101001001010101
01010010101010010101
01001010010010010010
01010010010100100101
0101010010101001000
10111010100101010101
11010010101110110010
11001001010010010001
01010101010101010101
01010010100100100100
10011110010010100010
10001001000101001010
10101010101010101010
01010010100100100100
10101010010100100010
10101010100101010101
10100100101010110100
10101010101010001010
101010101010111101
10101010101001001000
01010101010010100101
10101010010101010110
010010101010101101
1010101010101010101
101010101010010010

How many of their friends are also ICT students?

2013



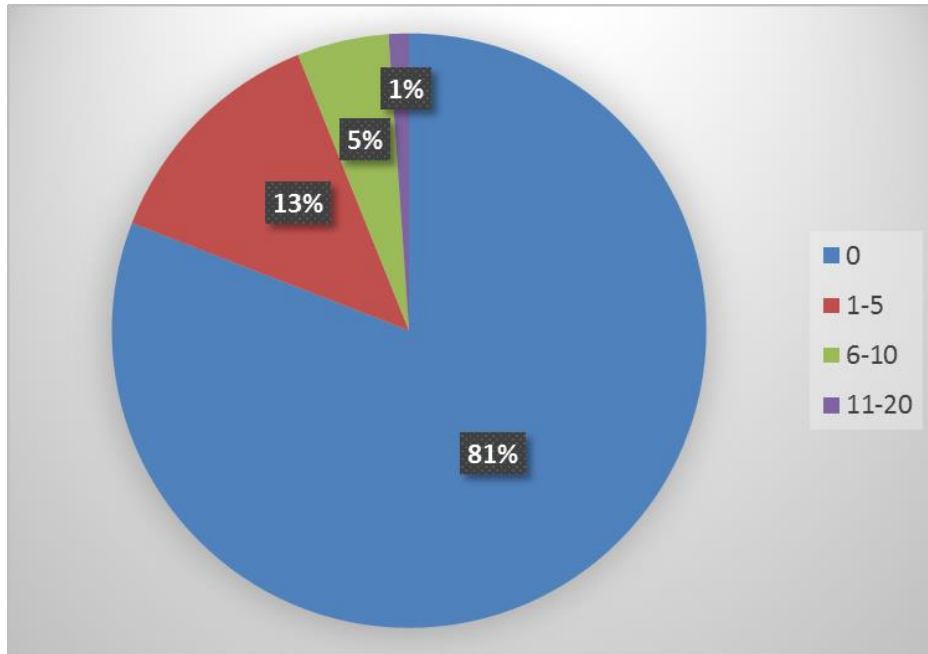
2014



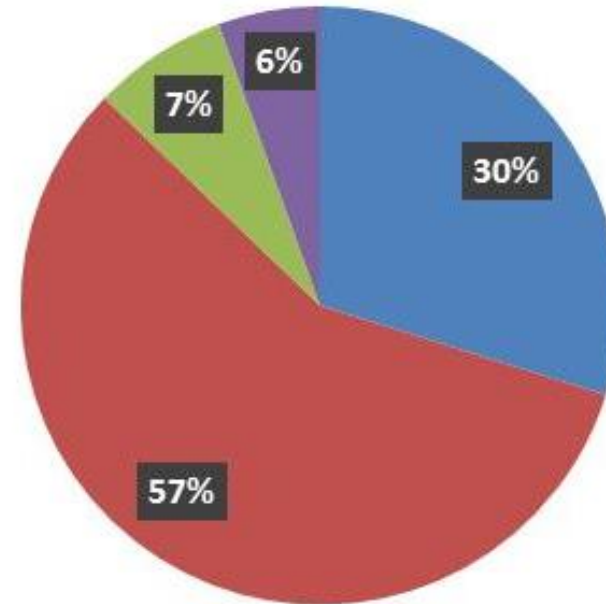
0101010010100100010
11010010010010100100
01010100101010010010
00101001010101101010
11010100101001010010
10101010010101001010
0101010010010010010
10101010010100100101
10100101001001010101
01010010101010010101
01001010010010010010
01010010010010010101
01010100101010010010
10111010010101010101
1101001010110110010
1100100100100100010
01010101010101010101
01010010010010010010
10101010010100100101
1001110010010100010
10001001000101001010
10101010101010101010
01010010100100100100
10101010010100100010
10101010100101010101
10100100101010110100
1010101010100001010
101010101010111101
10101010101001001000
010101010010100101
101010100101010110
10001010101011101
1010101010101010101
10101010101001001

How many of their friends work in the ICT field?

2013



2014



0101010010100100010
11010010010010100100
01010100101010010010
00101001010101101010
11010100101001010010
10101010010101001010
01010101001001010010
10101010010100100101
10100101001001010101
01010010101010010101
01001010010010010010
01010010010100100101
01010101001010100100
10111010100101010101
11010010101110110010
11001001010010010001
01010101010101010101
01010010100100100100
10101010010100100100
10011110010010100010
10001001000101001010
10101010101010101010
01010010100100100100
10101010010100100010
10101010100101010101
10100100101010110100
10101010101010001010
101010101010111101
1010101010100100010
010101010010100101
101010100101010110
01001010101011011
1010101010101010101
1010101010101010101

What was the 'breaking point' that caused interest in ICT?

Breaking point	2013	2014
Good salaries	2%	2%
I like ICT (emotional point of view)	3%	1%
Interest in mathematics	4%	1%
The field in general is important/promising	5%	7%
No direct 'breaking point', interest came with time	5%	6%
Computer games	6%	6%
Everyday work related or other contact with IT	7%	10%
Computer lessons in school	9%	5%
Someone recommended or was a role model	9%	16%
Other reasons	14%	11%
First computer, experience of doing something by myself	36%	35%

0101010010100100010
 11010010010010100100
 01010100101010010010
 00101001010101101010
 11010100101001010010
 10101010010101001010
 01010101001001010010
 10101010010100100101
 10100101001001010101
 01010010101010010101
 01001010010010010010
 01010010010100100101
 01010101001010100100
 10111010100101010101
 11010010101110110010
 11001001010010010001
 01010101010101010101
 01010010100100100100
 10011110010010100010
 10001001000101001010
 10101010101010101010
 01010010100100100100
 10101010010100100010
 10100100101010110100
 10101010101010001010
 101010101010111101
 10101010101001001000
 010101010010100101
 101010100101010110
 01001010101011101
 10101010101010101
 10101010101010101
 10101010101010101



Was the 'breaking point' also the reason why they chose this curriculum? If NO, then why?

2013 44% answered NO
2014 36% answered NO

Reason	2013	2014
I like ICT	3%	4%
Someone recommended	5%	10%
Good job, wide range of job opportunities	16%	12%
Interested in ICT	17%	20%
Other	19%	11%
Curriculum was suitable in personal perspective	40%	43%

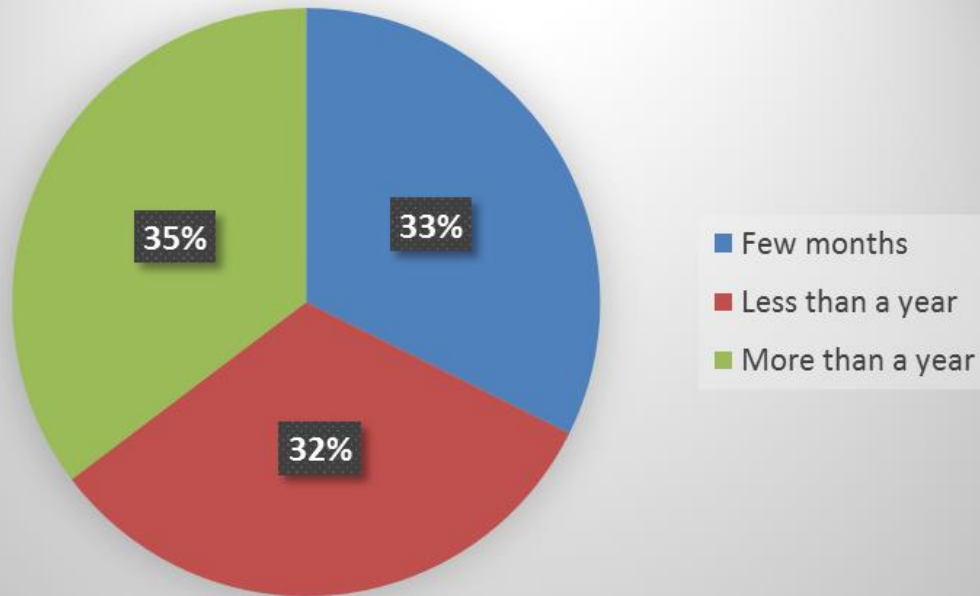
0101010010100100010
1101001001001010010
01010100101010010010
00101001010101101010
11010100101001010010
10101010010101001010
01010101001001010010
10101010010100100101
10100100100101010101
01010010101010010101
01001010010010010010
01010010010100100101
01010101001010010010
10111010010101010101
1101001010110110010
110010010010010001
01010101010101010101
01010010100100100100
1001110010010100010
10001001000101001010
10101010101010101010
01010010100100100100
10101010010100100010
10101010100101010101
10100100101010110100
1010101010100010101
101010101010111101
10101010101001001000
01010101001010010101
10101010010101010110
100010101010101101
1010101010101010101
1010101010101010101



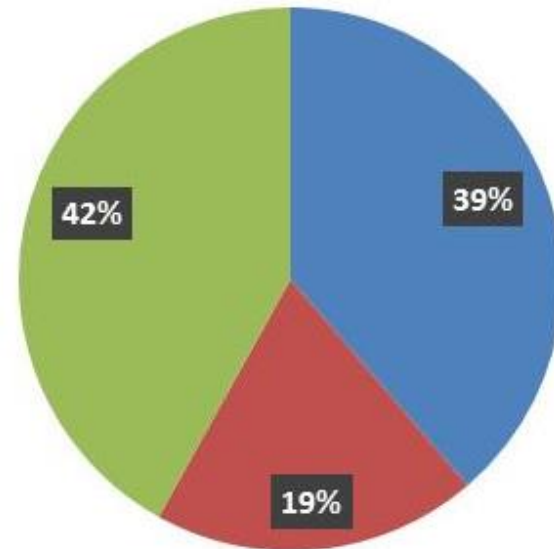
Have the students worked in the ICT field before? If YES, then how long?

2013 13.7% answered YES
2014 15.5% answered YES

2013



2014

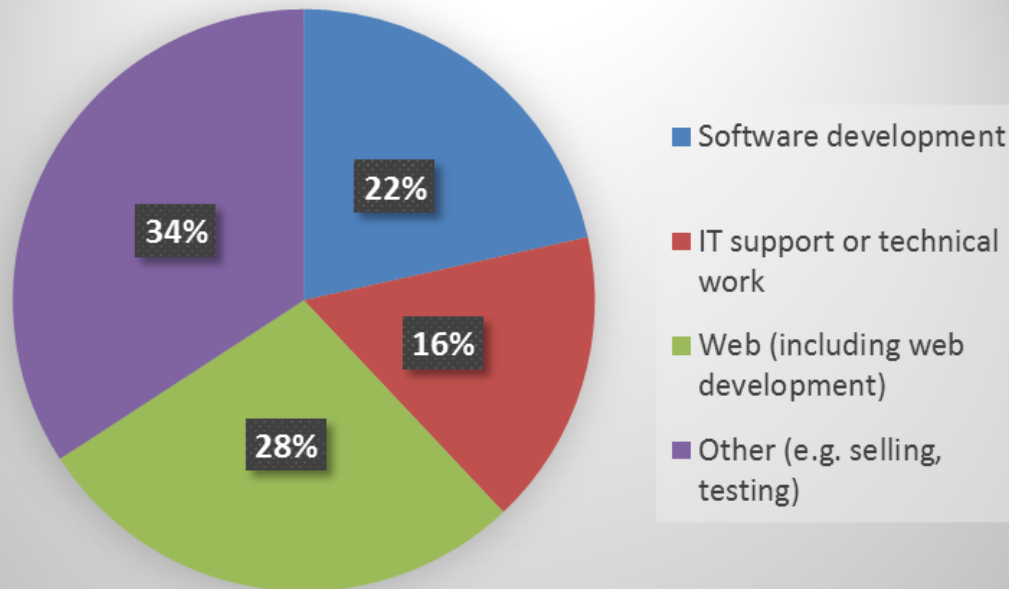


0101010010100100010
1101001001001010010
01010100101010010010
0010100101010101010
11010100101001010010
10101010010101001010
01010101001001010010
10101010010100100101
10100101001001010101
01010010101010010101
01001010010010010010
01010010010100100101
10101010010100100101
10111010010101010101
1101001010110110010
11001001010010010001
01010101010101010101
01010010010100100100
1001110010010100010
10001001000101001010
10101010101010101010
01010010100100100100
10101010010100100010
10101010100101010101
10100100101010110100
10101010101010001010
101010101010111101
10101010101001001000
01010101010010100101
10101010010101010110
100010101010101101
1010101010101010101
1010101010101010101

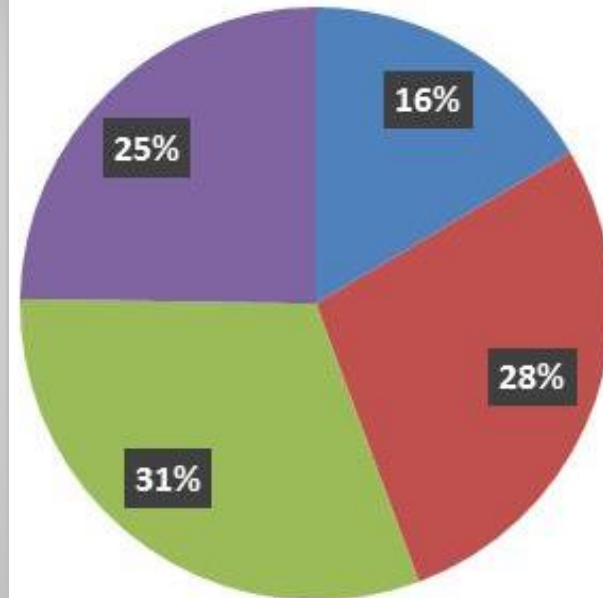


What kind of work have students done in the ICT field?

2013



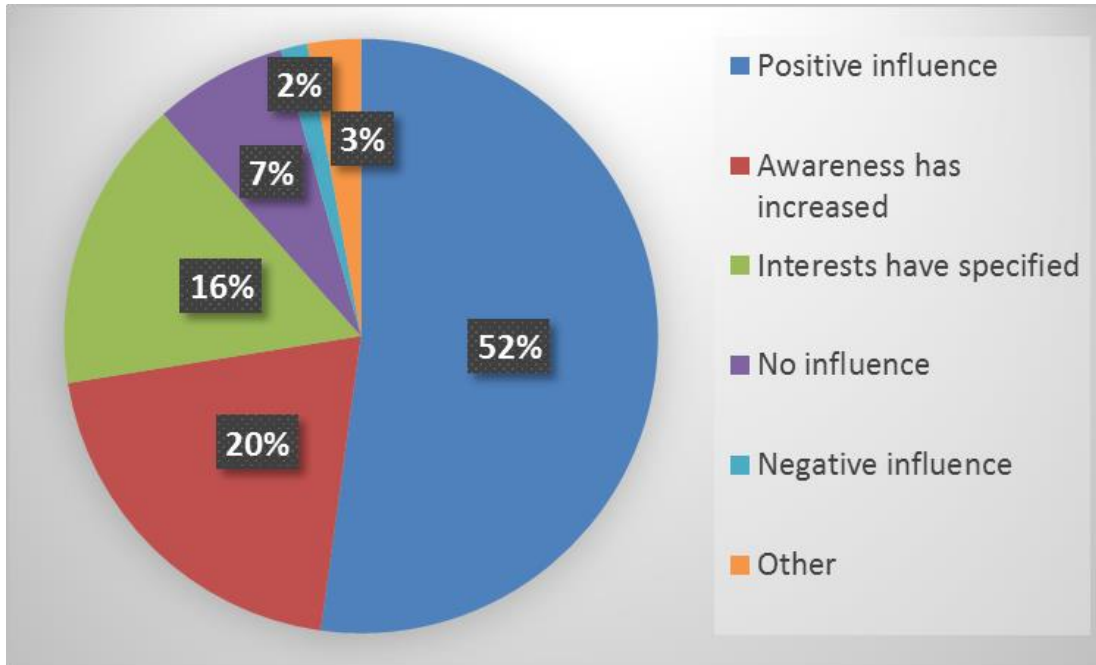
2014



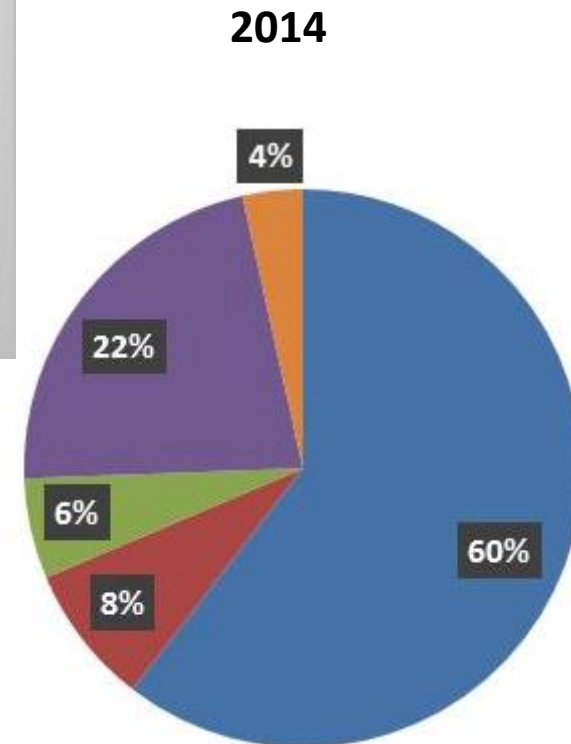
0101010010100100010
11010010010010100100
01010100101010010010
0010100101010101010
11010100101001010010
10101010010101001010
01010101001001010010
10101010010100100101
10100101001001010101
01010010101010010101
01001010010010010010
01010010010100100101
01010101001010100100
10111010100101010101
1101001010111010010
11001001010010010001
01010101010101010101
01010010100100100100
10011110010010100010
10001001000101001010
10101010101010101010
01010010100100100100
10101010010100100010
10101010100101010101
10100100101010110100
10101010101010001010
101010101010111101
10101010101001001000
0101010100101000101
010101001010101010
0100101010101101
010101010101010101
010101010101010101



How have working experiences influenced students interests?



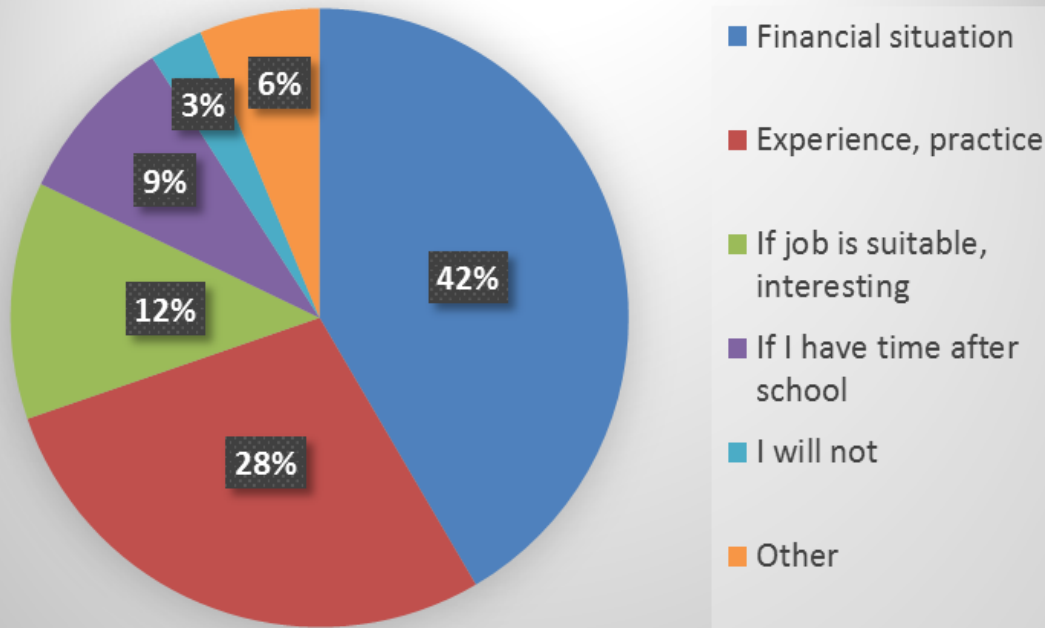
2013



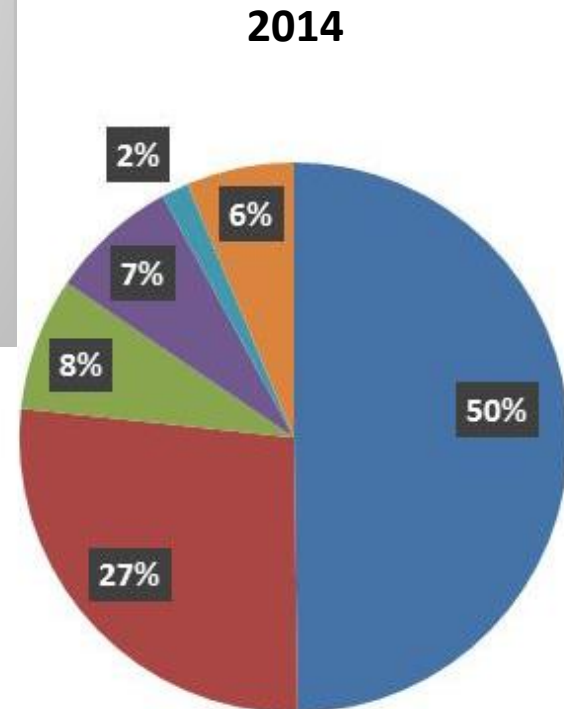
2014

0101010010100100010
11010010010010100100
010101000101010010010
001010010101010101010
11010100101001010010
101010100101010001010
01010100010001010010
101010100101000100101
10100101001001010101
01010010101010010101
01001010010010010010
01010010010100100101
0101010001010100100
10111010100101010101
1101001010110110010
11001001010010010001
01010101010101010101
01010010100100100100
1001110010010100010
10001001000101001010
10101010101010101010
01010010100100100100
10101010010100100010
10101010100101010101
10100100101010110100
10101010101010001010
101010101010111101
10101010101001001000
010101010010100101
10101010010101010110
0100010101010101101
010101010101010101
010101010101010101

Under what conditions will students start working during their studies?



2013



2014

0101010010100100010
11010010010010100100
01010100101010010010
0010100101010101010
11010100101001010010
10101010010101001010
01010101001001010010
10101010010100100101
10100101001001010101
01010010101010010101
01001010010010010010
01010010010100100101
01010100101010010010
10111010100101010101
11010010101110110010
11001001010010010001
01010101010101010101
01010010100100100100
10011110010010100010
10001001000101001010
10101010101010101010
01010010100100100100
10101010010100100010
10100100101010110100
10101010101010001010
101010101010111101
10101010101001001000
010101010010100101
101010100101010110
010001010101011101
010101010101010101
010101010101010101



Data collection at the beginning of the third semester

- September and October
- 354 second year students:
 - 200 students from TUT
 - 131 students from UT
 - 41 students from EITC

0101010010100100010
110100100100100100
010101001010100100
00101001010101010
1101010010100100010
10101010010100010
0101010100100100010
1010101001010010010
1010010100100101010
0101001010101001010
0100101001001001010
0101001001010010010
01010101001010100100
1011101010010101010
1101001010110100010
1100100100010010001
0101010101010101010
01010010100100100100
1001111001001000010
10001001000101001010
10101010101010101010
01010010100100100100
10101010010100100010
10101010101001010101
10100100101010110100
10101010101010001010
101010101010111101
10101010101001001000
0101010101001001010
10101010010101010110
0100101010101101
1010101010101010101
1010101010101001001

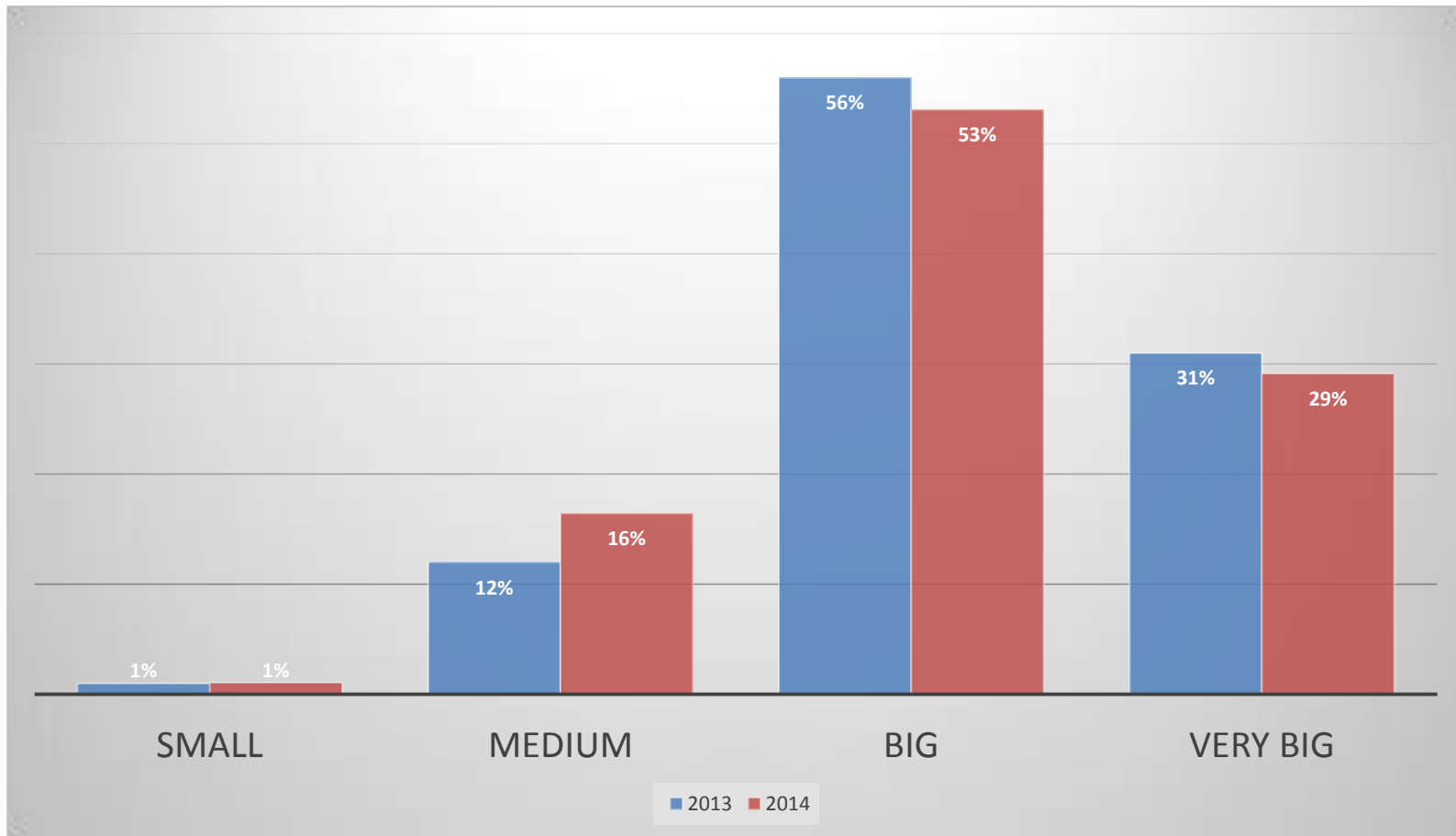


Eesti tuleviku heaks



Euroopa Liit
Euroopa
Regionaalarengu Fond

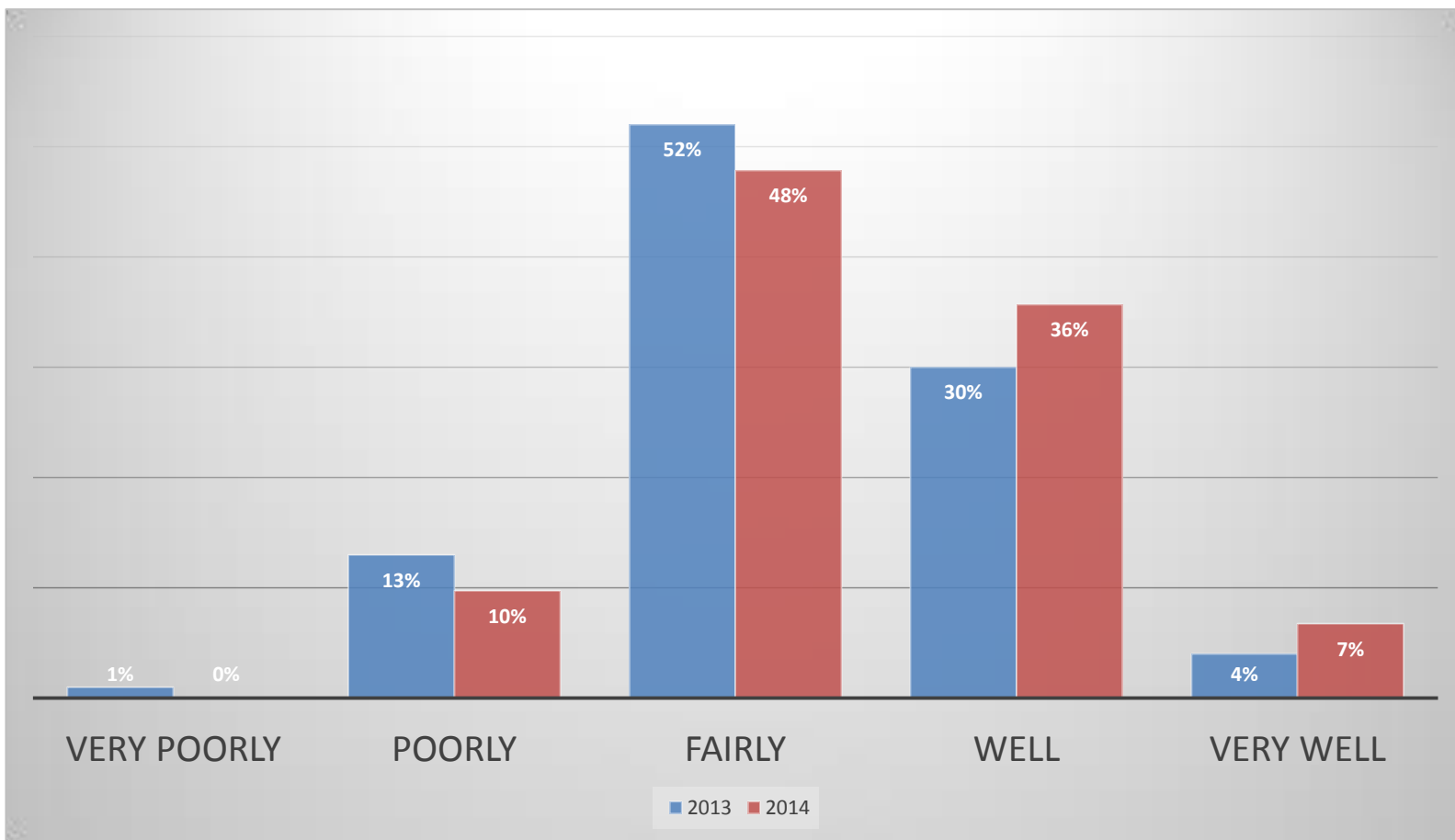
How large is students' interest in ICT?



0101010010100100010
11010010010010100100
01010100101010010010
00101001010101101010
11010100101001010010
10101010010101001010
01010101001001010010
10101010010100100101
10100101001001010101
01010010101010010101
01001010010010010010
01010010010100100101
01010101001010100100
10111010100101010101
11010010101110110010
11001001010010010001
01010101010101010101
01010101001010100100
10101010010100100101
10001001000101001010
10101010101010101010
01010010100100100100
10101010010100100010
10101010100101010101
10100100101010110100
10101010101010001010
101010101010111101
10101010101001001000
010101010010100101
101010100101010110
100010101010101101
1010101010101010101
101010101010100101



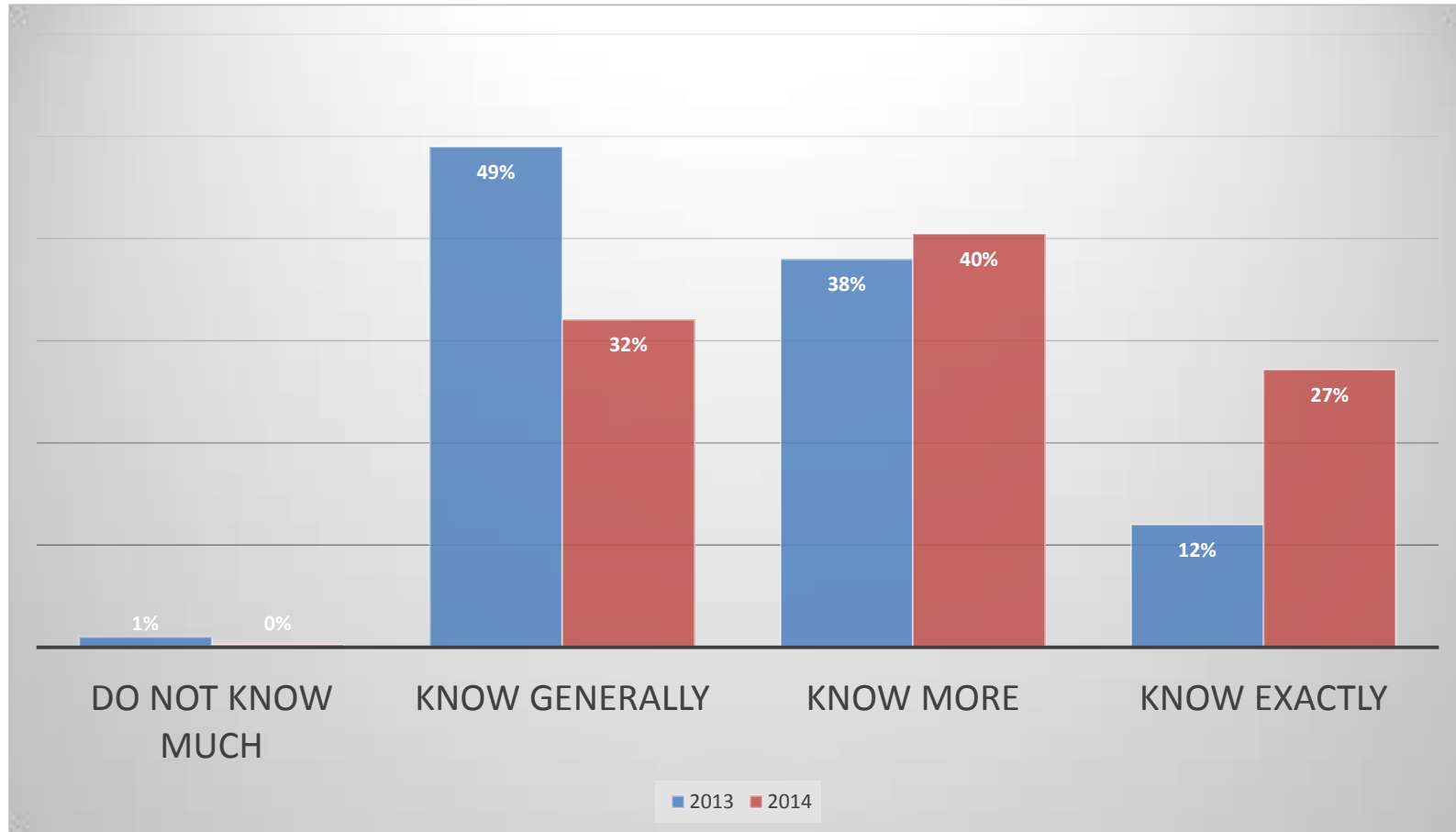
How informed are students about job opportunities in the ICT field?



0101010010100100010
1101001001001010010
01010100101010010010
00101001010101101010
11010100101001010010
10101010010101001010
01010101001001010010
10101010010100100101
10100101001001010101
01010010101010010101
01001010010010010010
01010010010100100101
01010100101010010010
10111010010101010101
11010010101110110010
11001001010010010001
01010101010101010101
01010010100100100100
10101010010100100100
10011110010010100010
10001001000101001010
10101010101010101010
01010010100100100100
10101010010100100010
10101010100101010101
10100100101010110100
10101010101010001010
101010101010111101
10101010101001001000
010101010010100101
1010100010101010110
100010101010101101
1010101010101010101
101010101010100101



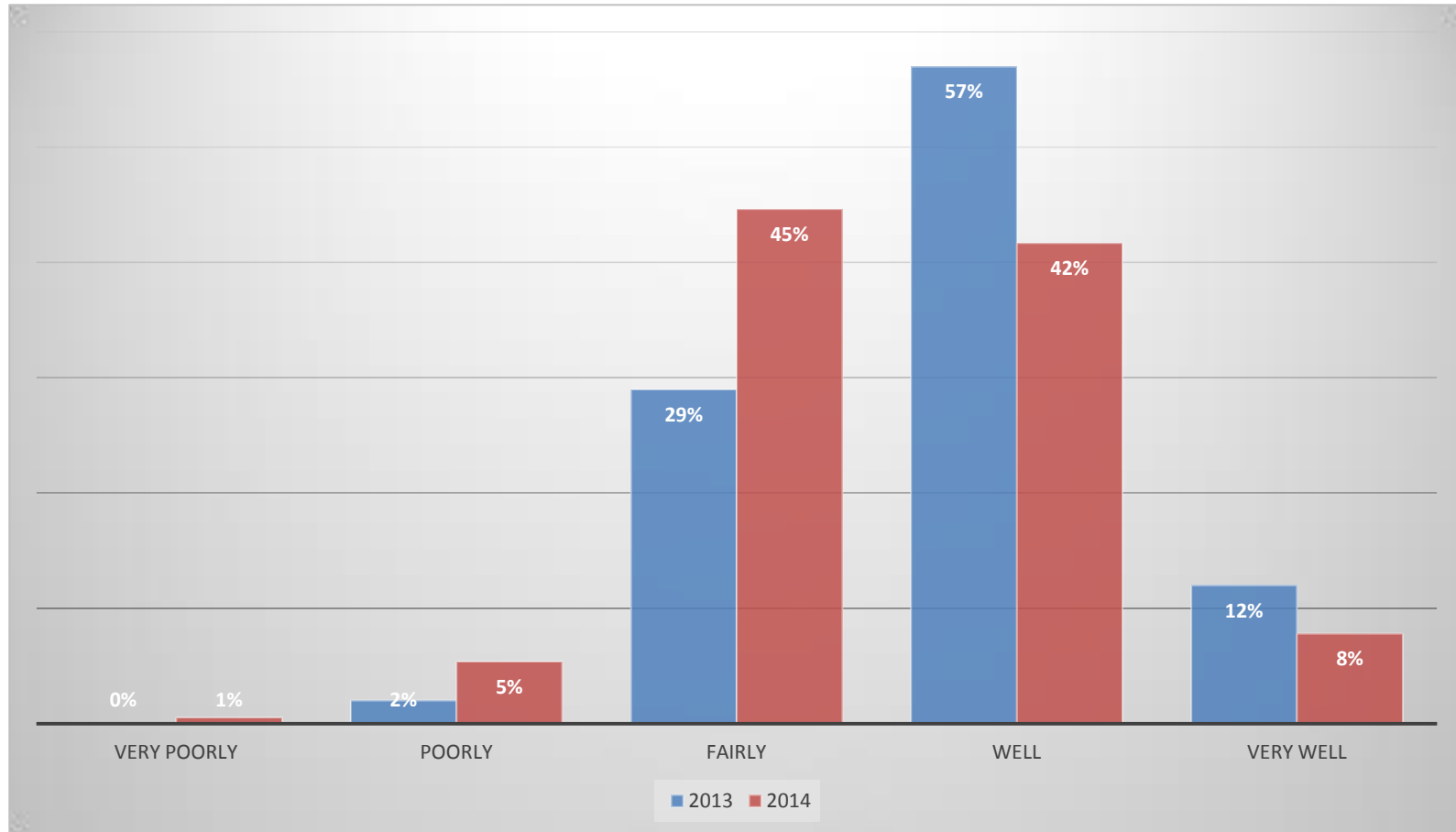
How informed are students about the curriculum they are studying?



0101010010100100010
1101001001001010010
01010100101010010010
0010100101010101010
1101010010100100010
1010101001010100010
010101010010010010
1010101001010010010
1010010100100101010
0101001010101001010
0100101001001001010
010100100101001010
0101010100101010010
1011101001010101010
1101001010111010010
1100100101001001001
0101010101010101010
0101001010010010010
1010101001010010010
10011110010010100010
10001001000101001010
10101010101010101010
0101001010010010010
10101010010100100010
1010101010010101010
10100100101010110100
10101010101010001010
101010101010111101
10101010101001001000
010101010010100101
101010100101010110
10001010101011101
1001010101010101
1001010101010101



How well does the curriculum meet student expectations?

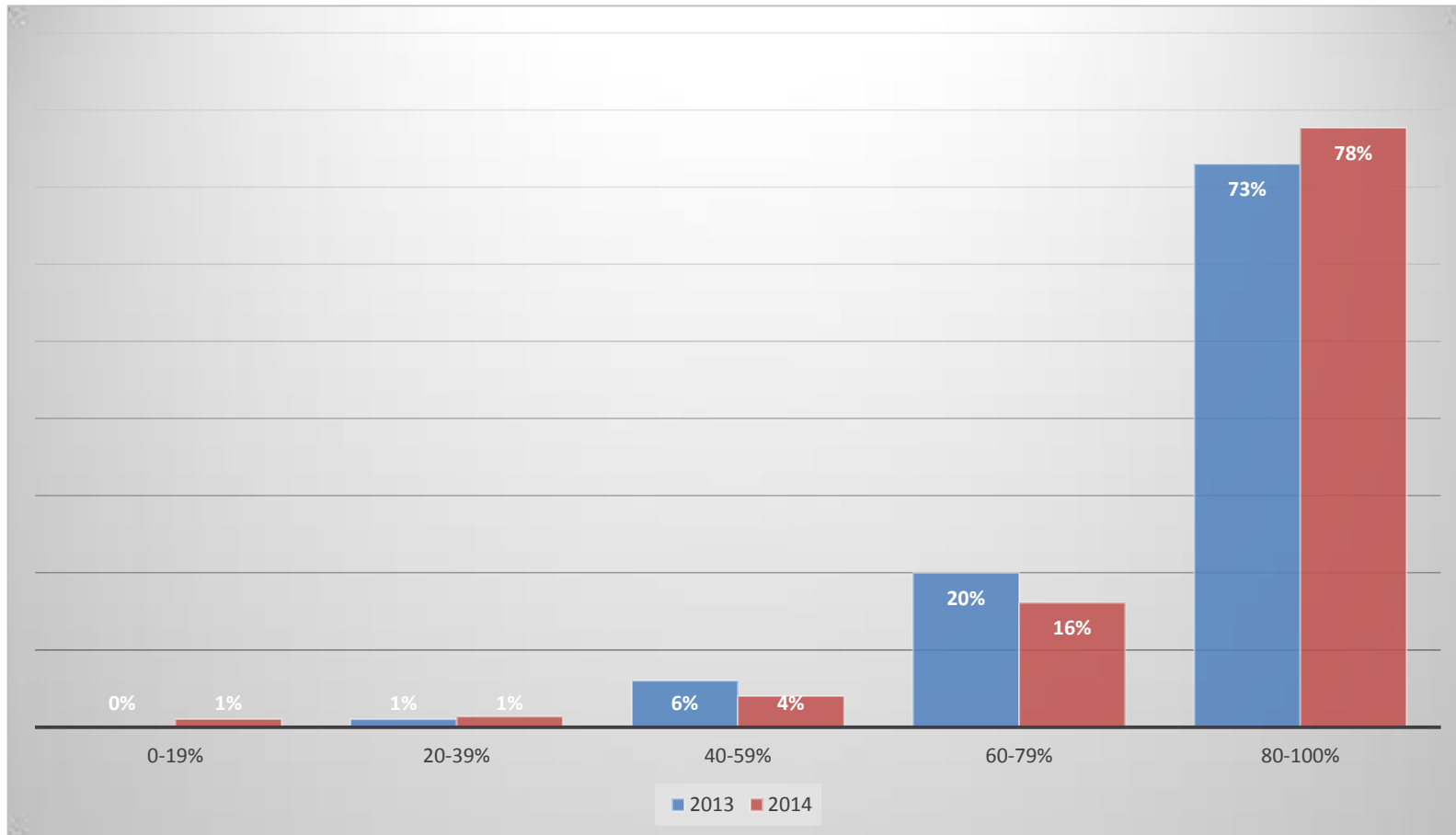


0101010010100100010
1101001001001010010
01010100101010010010
0010100101010101010
11010100101001010010
10101010010101001010
0101010010010010010
1010101001010010010
1010010100100101010
0101001010101001010
0100101001001001010
0101001001001001010
0101010010101001000
1011101001010101010
1101001010111010010
1100100101001001000
0101010101010101010
0101001010010010010
1010101001010010010
1010101010010101010
1010010010101011010
1010101010101001010
0101001010010010010
1010101001010010010
1010101010010101010
1010010010101011010
101010100101010110
01001010101011101
0101010101010101010
0101010101010101010



Euroopa Liit
Euroopa
Regionaalarengu Fond

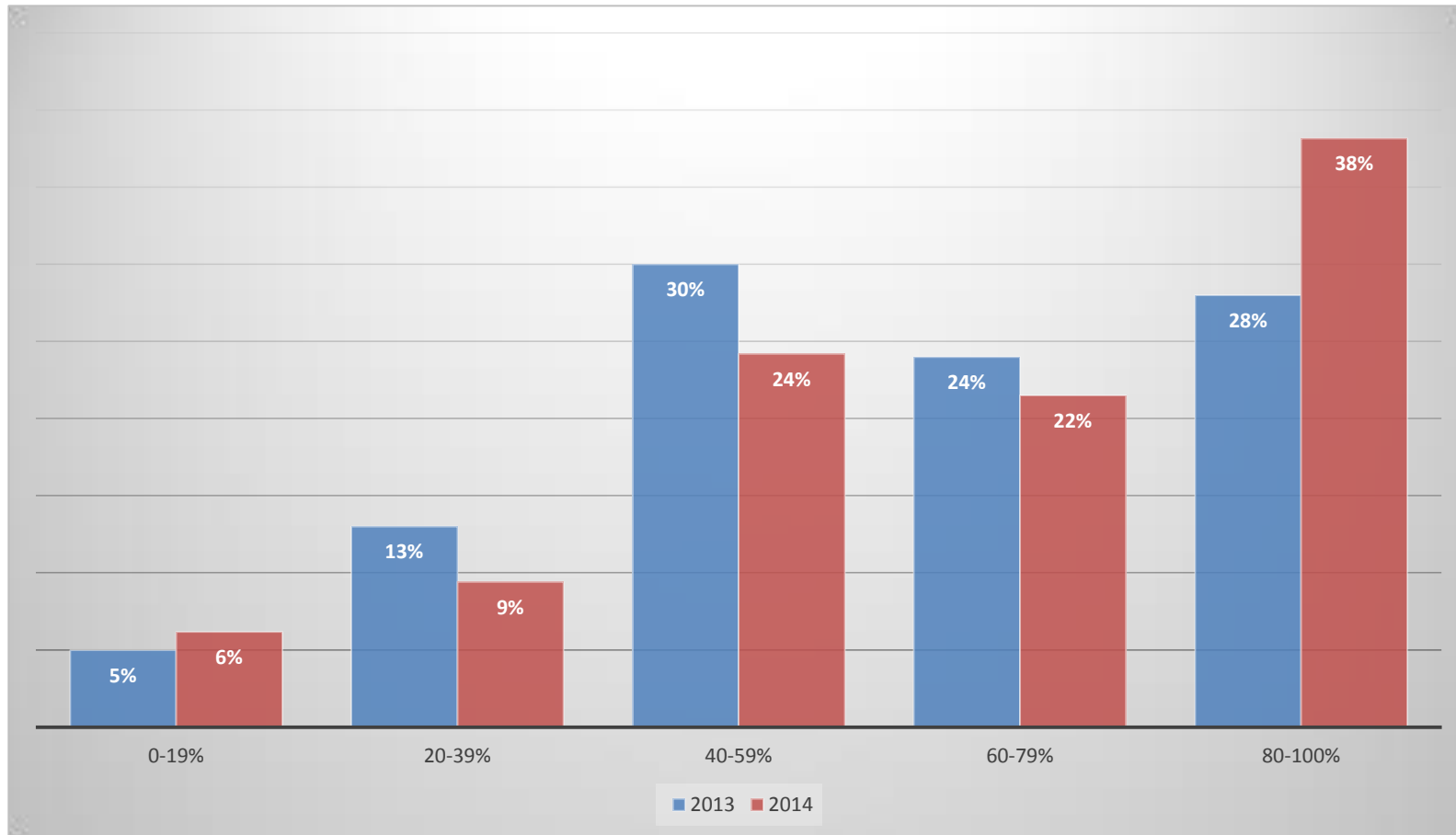
With what probability do students think they will finish their studies?



0101010010100100010
11010010010010100100
01010100101010010010
00101001010101101010
11010100101001010010
10101010010101001010
01010101001001010010
10101010010100100101
10100101001001010101
01010010101010010101
01001010010010010010
01010010010100100101
01010100101010010010
10111010100101010101
11010010101110110010
11001001010010010001
01010101010101010101
01010010100100100100
10001001000101001010
10101010101010101010
01010010100100100100
10101010010100100010
10101010100101010101
10100100101010110100
10101010101010001010
101010101010111101
10101010101001001000
01010101001010010101
10101010010101010110
100010101010101101
10101010101010101010
10101010101001001



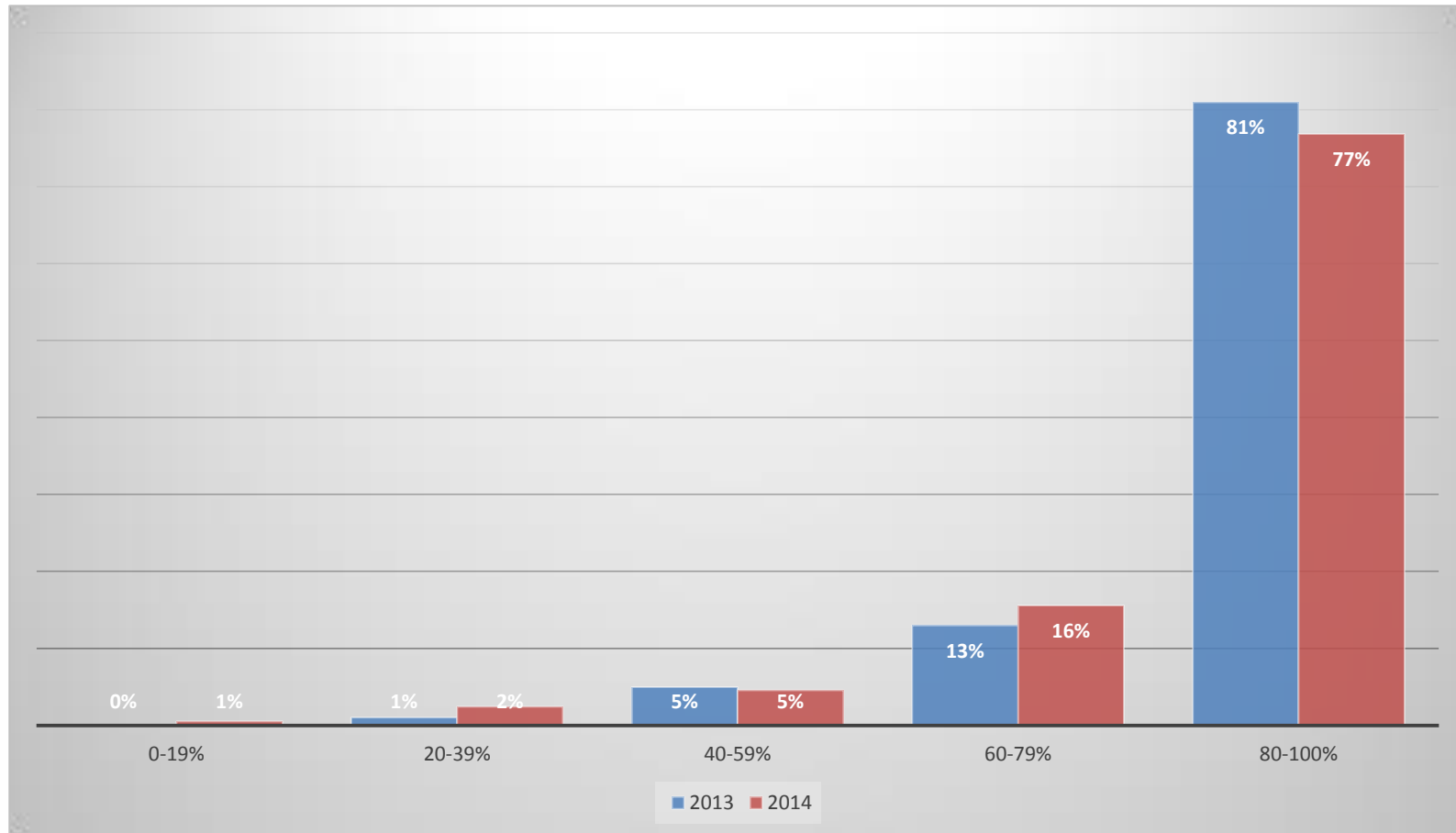
How large is the probability that students start working during studies?



0101010010100100010
1101001001001010010
01010100101010010010
0010100101010101010
11010100101001010010
10101010010101001010
01010101001001010010
10101010010100100101
10100101001001010101
01010010101010010101
01001010010010010010
01010010010100100101
01010101001010100100
10111010100101010101
1101001010110110010
11001001010010010001
01010101010101010101
01010010100100100100
10001001000101001010
10101010101010101010
01010010100100100100
10101010010100100010
10101010100101010101
10100100101010110100
10101010101010001010
101010101010111101
10101010101001001000
0101010100101001001
101010100101010110
100010101010101101
1010101010101010101
1010101010101001001



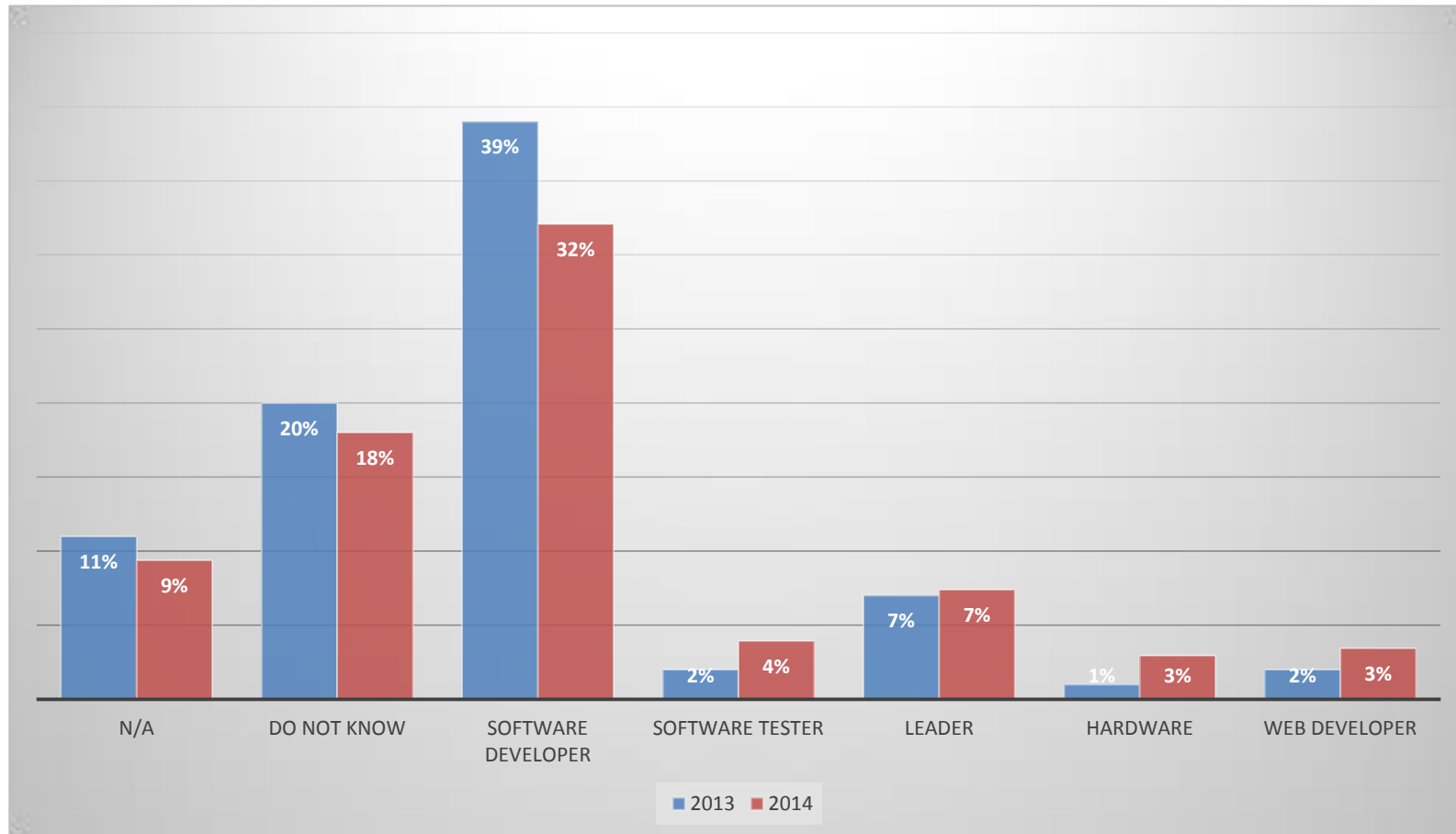
How large is the probability that students work in ICT field after studies?



0101010010100100010
1101001001001010010
01010100101010010010
00101001010101101010
11010100101001010010
10101010010101001010
01010101001001010010
10101010010100100101
10100101001001010101
01010010101010010101
01001010010010010010
01010010010100100101
01010100101010010010
10111010100101010101
11010010101110110010
11001001010010010001
01010101010101010101
01010010100100100100
10011110010010100010
10001001000101001010
10101010101010101010
01010010100100100100
10101010010100100010
10101010100101010101
10101010101010001010
101010101010111101
10101010101001001000
010101010010100101
101010100101010110
100010101010101101
10101010101010101
1010101010100101



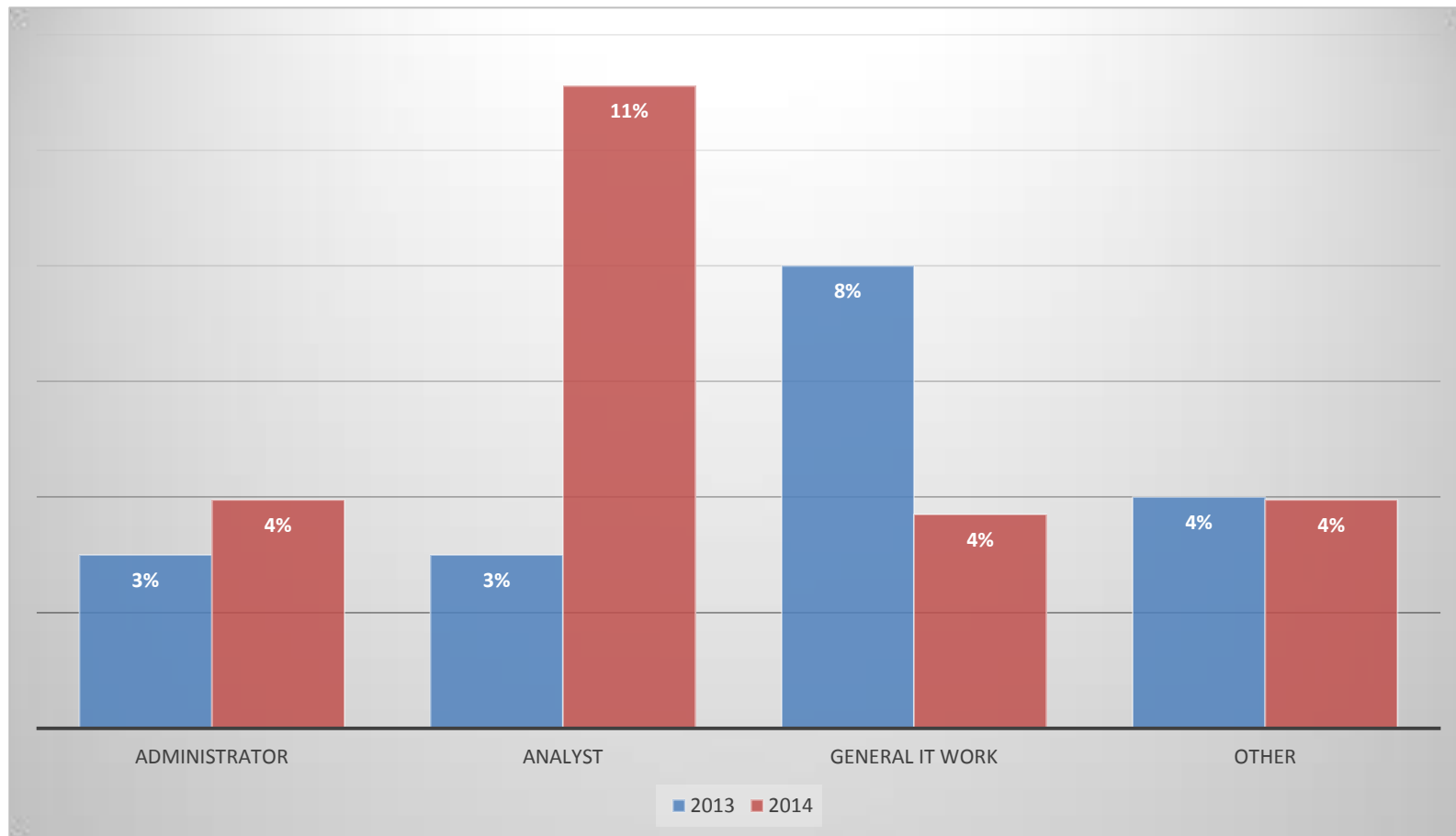
What kind of jobs do students want?



0101010010100100010
1101001001001010010
01010100101010010010
0010100101010101010
11010100101001010010
10101010010101001010
010101001001001010010
10101010010100100101
10100101001001010101
01010010101010010101
01001010010010010010
01010010010100100101
01010100101010100100
10111010010101010101
11010010101110110010
11001001010010010001
01010101010101010101
01010010100100100100
10011110010010100010
10001001000101001010
10101010101010101010
01010010100100100100
10101010010100100010
10101010100101010101
10100100101010110100
10101010101010001010
101010101010111101
10101010101001001000
010101010010100101
101010100101010110
100010101010101101
10101010101010101
1010101010101001001



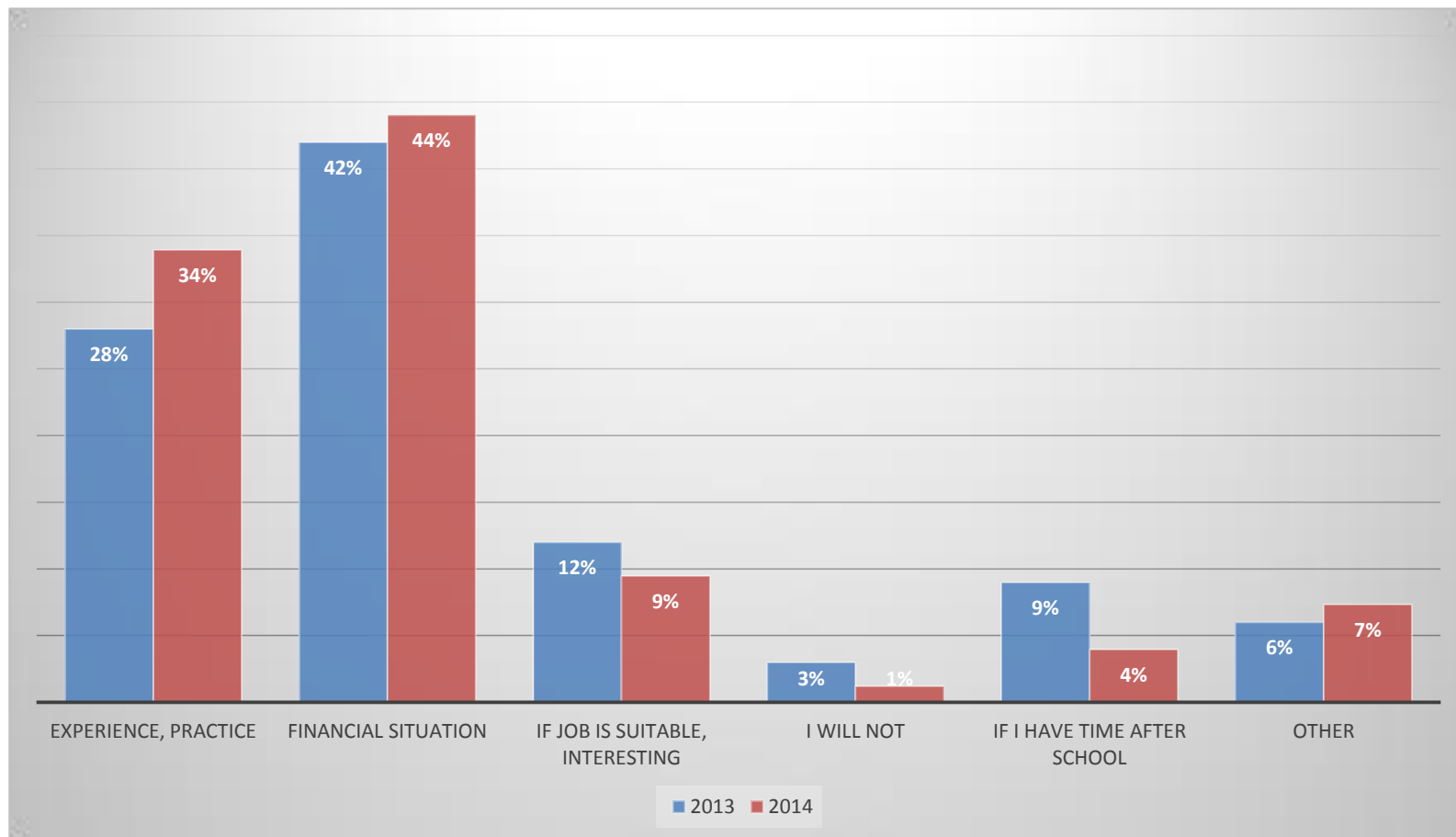
What kind of jobs do students want?



0101010010100100010
1101001001001010010
01010100101010010010
0010100101010101010
11010100101001010010
10101010010101001010
01010101001001010010
10101010010100100101
10100101001001010101
01010010101010010101
01001010010010010010
01010010010100100101
01010101001010100100
10111010100101010101
11010010101110110010
11001001010010010001
01010101010101010101
01010101001010100100
10011110010010100010
10001001000101001010
10101010101010101010
01010010100100100100
10101010010100100010
10101010101001010101
10100100101010110100
10101010101010001010
101010101010111101
10101010101001001000
010101010010100101
101010100101010110
100010101010101101
1010101010101010101
10101010101010101



Under what conditions will students start working during their studies?



0101010010100100010
11010010010010100100
01010100101010010010
0010100101010101010
11010100101001010010
10101010010101001010
01010101001001010010
10101010010100100101
10100101001001010101
01010010101010010101
01001010010010010010
01010010010100100101
01010100101010010010
10111010010101010101
11010010101110110010
11001001010010010001
01010101010101010101
01010010100100100100
10011110010010100010
10001001000101001010
10101010101010101010
01010010100100100100
10101010010100100010
10101010100101010101
10100100101010110100
10101010101010001010
101010101010111101
10101010101001001000
010101010010100101
10101010010101010110
100010101010101101
1010101010101010101
101010101010101001



Thank you!

01010100101001000100
11010010010010100100
01010100101010010010
00101001010101010101
11010100101001010010
10101010010101001010
01010101001001010010
10101010010100100101
10100101001001010101
01010010101010010101
01001010010010010010
01010010010100100101
01010101001010100100
10111010100101010101
11010010101110110010
11001001010010010001
01010101010101010101
01010010100100100100
10011110010010100010
10001001000101001010
10101010101010101010
01010010100100100100
10101010010100100010
10101010100101010101
10100100101010110100
10101010101010001010
101010101010111101
10101010101001001000
01010101010010100101
10101010010101010110
01001010101011101
1010101010101010101
1010101010101001001

