



# Finalists

Please select a category to discover the winners & finalists :

Shortlisted projects « New European Bauhaus Awards »

1 • Reconnecting with nature [i](#)

---

2 • Regaining a sense of belonging [i](#)

---

3 • Prioritising the places and people that need it the most [i](#)

---

4 • Shaping a circular industrial ecosystem and supporting life-cycle thinking [i](#)

---

Shortlisted projects « New European Bauhaus Rising Stars »

1 • Reconnecting with nature [i](#)

---

2 • Regaining a sense of belonging [i](#)

---

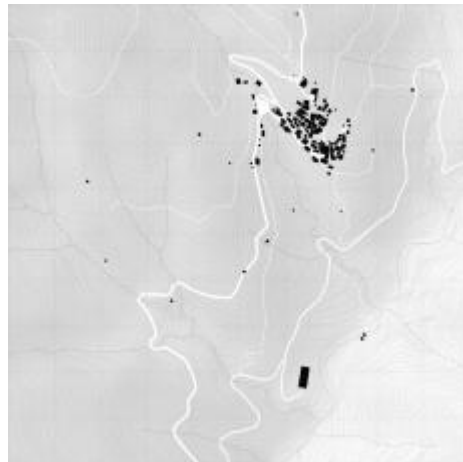
3 • Prioritising the places and people that need it the most [i](#)

---

3



Prioritising the places and people that need it the most



 **1 WINNER**

**Topolò/Topolove – The Village as House**  
GRIMACCO (UD), ITALY



The Village as a House is inspired by the residents of Topolò, whose homes were designed for a past lifestyle led mostly outdoors, and lack space and infrastructure. Residents use empty places scattered around their village for everyday tasks, as if each small house was a room in a bigger shared house, the village itself. This solution provides a model to revive rural areas: instead of



All photos copyright European Union

## RUNNER-UP 2

### CoolCo's - Cooling Corners & Corridors BUDAPEST, HUNGARY

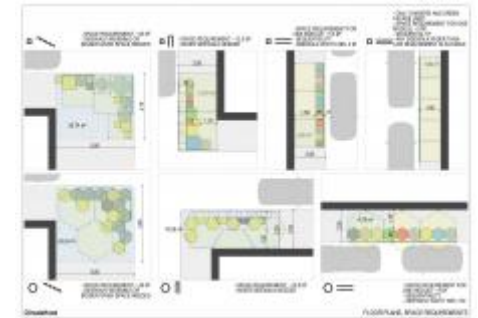
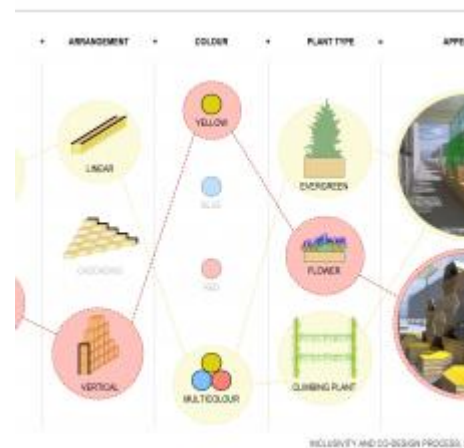
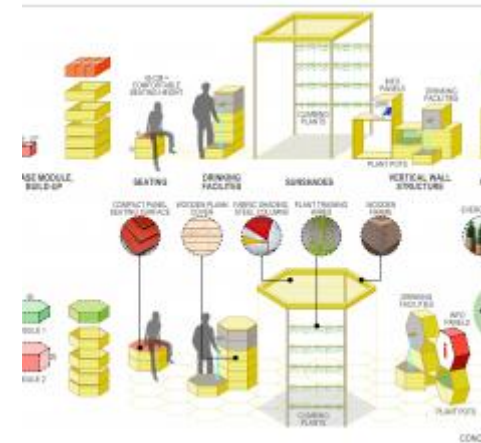
CoolCo's Cooling Corners and Corridors are small modular structures made from wood, fabric and steel to contain various plants and flowers. They are designed to reduce the impact of heat waves in urban areas, particularly densely populated neighbourhoods with low heat resilience. Their shape and size can be adjusted to fit strategic locations, sidewalks or walls for instance, where they provide refreshing "islands" of greenery to shelter inhabitants from the heat and improve air quality.

transforming each home, unused spaces in villages can be converted into communal facilities, which satisfy modern day needs, establish a strong sense of community and could attract new residents.

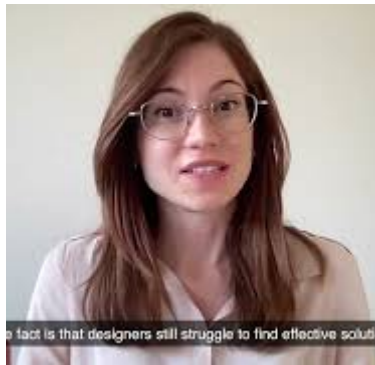
[View the full application](#)



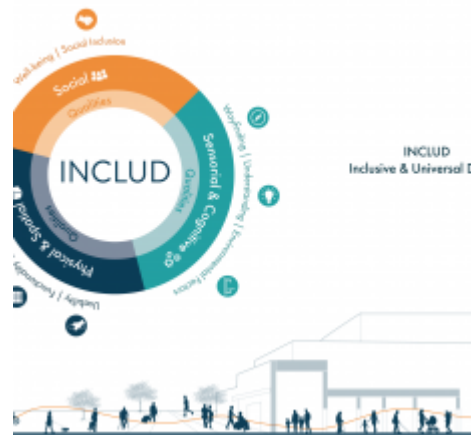
In order to get some rest from the extreme heat.



[View the full application](#)



fact is that designers still struggle to find effective solutions



INCLUD  
Inclusive & Universal D

## INCLUD (Inclusive & Universal Design) MILAN, ITALY

INCLUD is a digital platform that assesses a building's performance according to Universal Design principles through a new automatic framework of objective indicators. The tool supports designers with effective strategies for both new projects and building renovations, while also guiding decision making processes to enhance inclusive and accessible environments for everyone's diversities and disabilities. INCLUD has already been tested in Italy.

[View the full application](#)



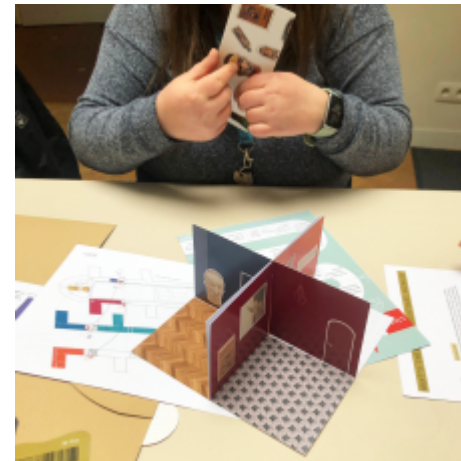


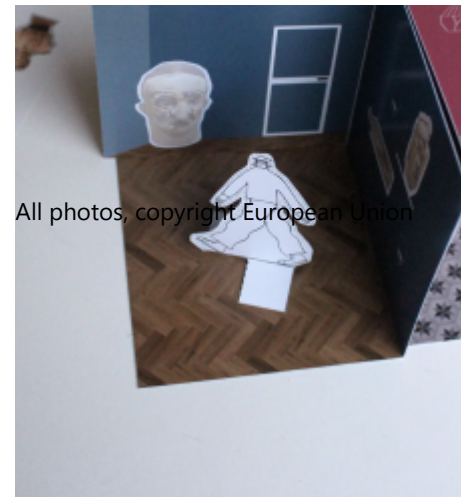
## The Dr. Guislain museum Toolkit

GENT , BELGIUM

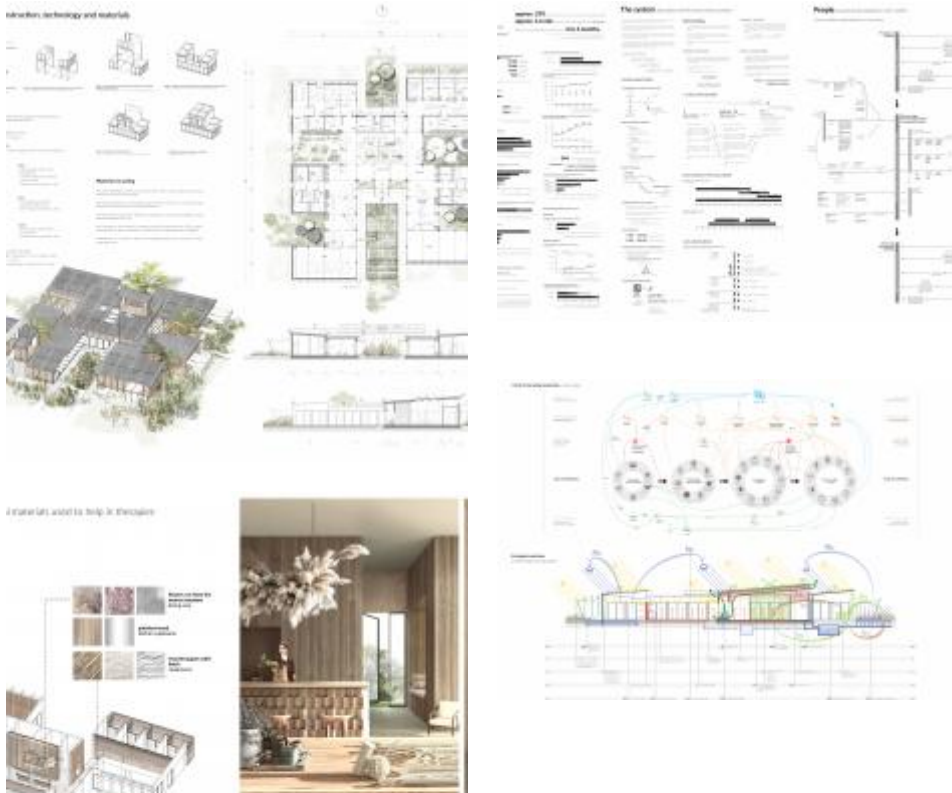
For people with a mental disability, a museum visit can be overwhelming and chaotic. The Dr. Guislain Toolkit provides information and interaction prior to the visit with balance, structure and an increased engagement as a result. A 'one fits all' approach answers the needs of a broad range of users, including people with a mental impairment.

[View the full application](#)





## NURTURE WROCLAW, POLAND



NURTURE is a project of a comprehensive system of prefabricated ecological centers, offering economically available psychological help and support in local communities in Poland. It is a response to the post-pandemic global problem of depression and actual Ukrainian refugees' crisis. Low cost and ease of construction, and self-financing of center's use fights social exclusion and build local relations. A variety of the program and the possibility of rapid expansion, easily adapt to local needs.

[View the full application](#)



All photos, copyright European Union

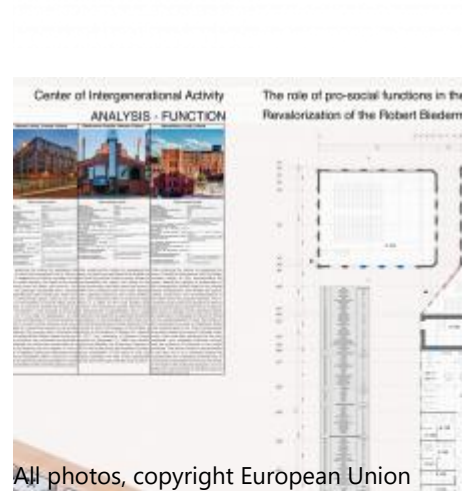
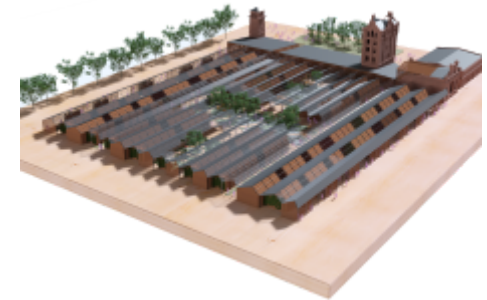
## Center of Intergenerational Activity NIEPOŁOMICE , POLAND

The work focuses on explaining the concept of pro-sociality and its role in the adaptation of post-industrial facilities based on the analysis of selected projects from Europe. The conclusions from the analysis and public opinion polls of city residents, served as the basis for the development of a program to save the historic factory of Robert Biedermann's in Łódź and help city residents by creating a place that does not exclude anyone.

[View the full application](#)



...se for integration and spending time together for many goe



All photos, copyright European Union

---

## Contact

