



SecexAmbiental
Secretary of External Control
of Agriculture and Environment

Audit team
Bruno Oliveira Tavares de Lyra
Carlos Eduardo Lustosa da Costa

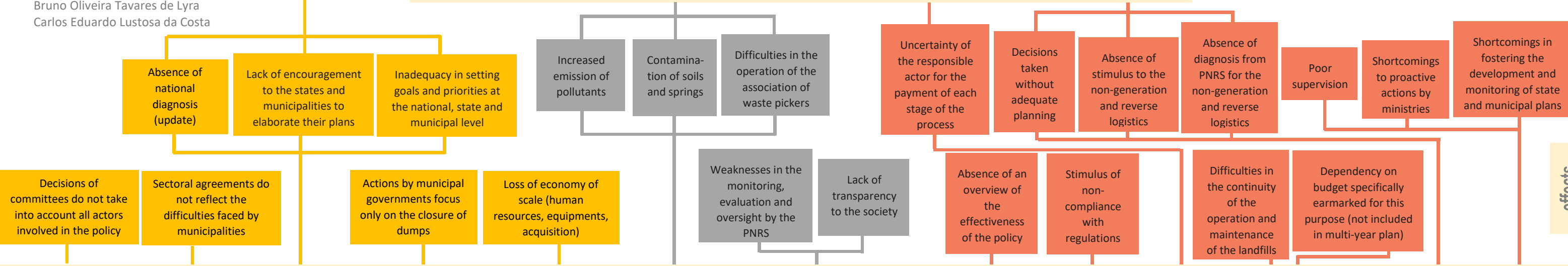
Economic, environmental, social and public health problems resulting from the low implementation of the National Solid Waste Policy (PNRS), such as pollution, transmission of diseases, deficiencies in the social inclusion of waste pickers, loss of waste products with potential utilization, etc.

PROBLEM TREE

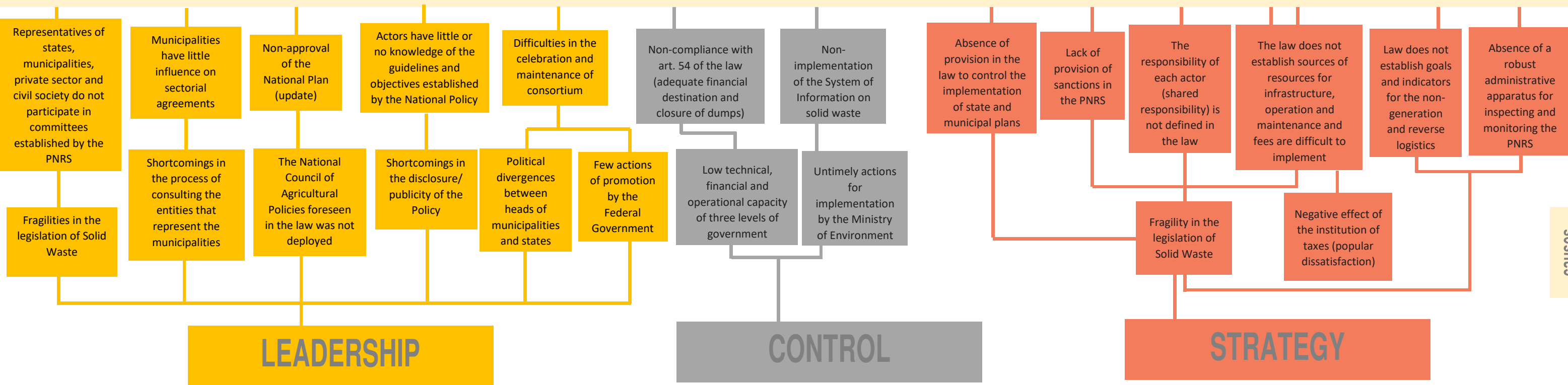
The tree diagram is a technique that facilitates the identification and organization of the causes and consequences, or effects, of a central problem - in this case, the low implementation of the National Solid Waste Policy.

How to interpret the tree:

Effect
↑
Central problem
↑
Cause



LOW IMPLEMENTATION OF THE NATIONAL SOLID WASTE POLICY



GOVERNANCE