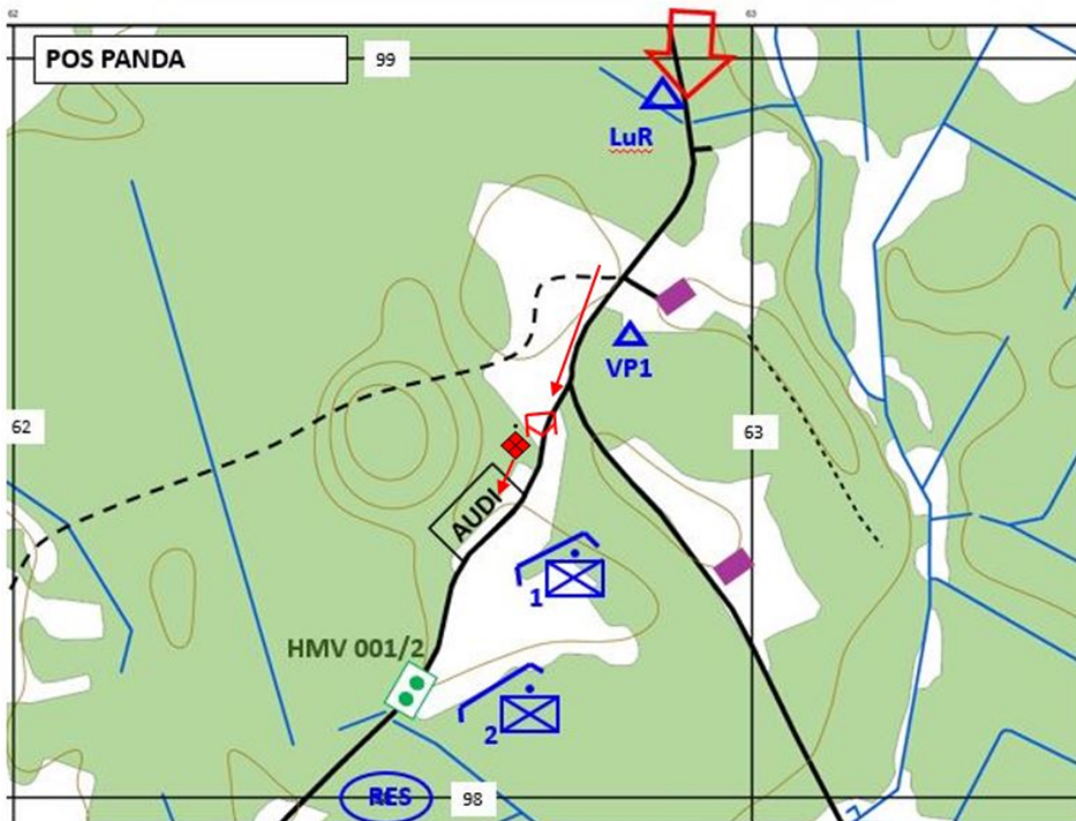


Continuous situation of the Delay scenario

Map 1. 1. PLT positions and ENY locations and activity in position PANDA for D2 (given to paper and pencil group only)



You are still walking towards A11 positions; before you reach them, you get the following information through the radio:

VP1 → A10: BMP is now in the same line with me, what is going to happen, OVER.

A10: stay there, I am dealing with the situation, OUT.

While still moving, you hear battle noises starting (main gun of IFV, rifle bursts) and you continue to move. Before reaching A11 positions you get additional information through the radio:

A11 → A10: contact contact, BREAK, IFV in front of us, infantry is dismounting, rolling towards woods in east, ENY is 627 985, I have 1 WIA and I am suppressed, OVER.

A10: ROGER, I am in your positions in a moment, OUT.

A11: ROGER.

You reach the A11 positions and jump into the trench; through the binoculars you see how ENY infantry moves southwest along the edge of the forest. Shortly after that you get additional information through the radio:

A90 → A10: leave position PANDA, BREAK, RETREAT and SECURE crossroad AUDI-VOLVO ASAP, BREAK, IOT DENY ENY breakthrough towards PALU, OVER.

A10: ROGER, OVER.

A90: OUT.

While the battle goes on, you get additional information shortly.

A12 → A10: I have lost my Motorola battery, we start looking for it with the squad, OVER.

A10: ROGER, OUT.