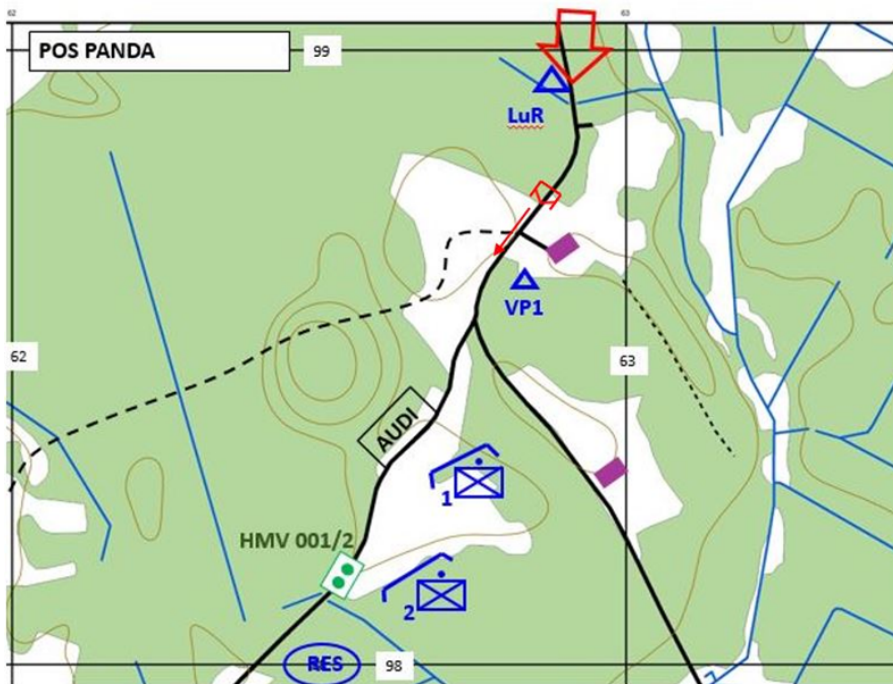


Initial situation of the Delay scenario

Map 3. 1. PLT positions and ENY locations and activity in position PANDA for D1 (given to paper and pencil group only).



You are currently located in the A12 position and looking through the binoculars at the landscape in front of you. You see A14 soldiers in their positions when you look right or left. While looking at the landscape in front of you, you get the following information through the radio (starting transmissions are not included, arrow shows who is starting the transmission and to whom the message is being transmitted, respondents' answers to messages are shown in separate rows):

A20 → A90: ENY has broken through our position in TAGULA, BREAK, PLT size ENY moved along route VOLVO to the south, BREAK. They got stuck behind minefield, I have 3 WIA, 2 KIA, BREAK, I try to FIX ENY with fire, I do not know if I succeed, OVER.

A90: ROGER, OVER.

A20: OUT.

A90: OUT.

You continue to watch the landscape in front of you through your binoculars, but there is no ENY yet to be seen. Shortly after you get information through the radio:

L90 → A10: my OP detected BMP moving in your direction, BREAK; approximately 800m apart, there are 2 more APCs, BREAK, and 1 MBT, OVER.

A10: ROGER.

L90: OUT.

VP1 → A10: I see BMP approaching my OP in route AUDI, what is going to happen, OVER.

A10: stay in your position, OVER.

A10 → A11: Be ready, ENY will be in front of your positions soon, BREAK, I come to your position, I reach in 2, OVER.

A11: ROGER, OVER.

A10: OUT.

You start moving towards A11 positions through the woods.