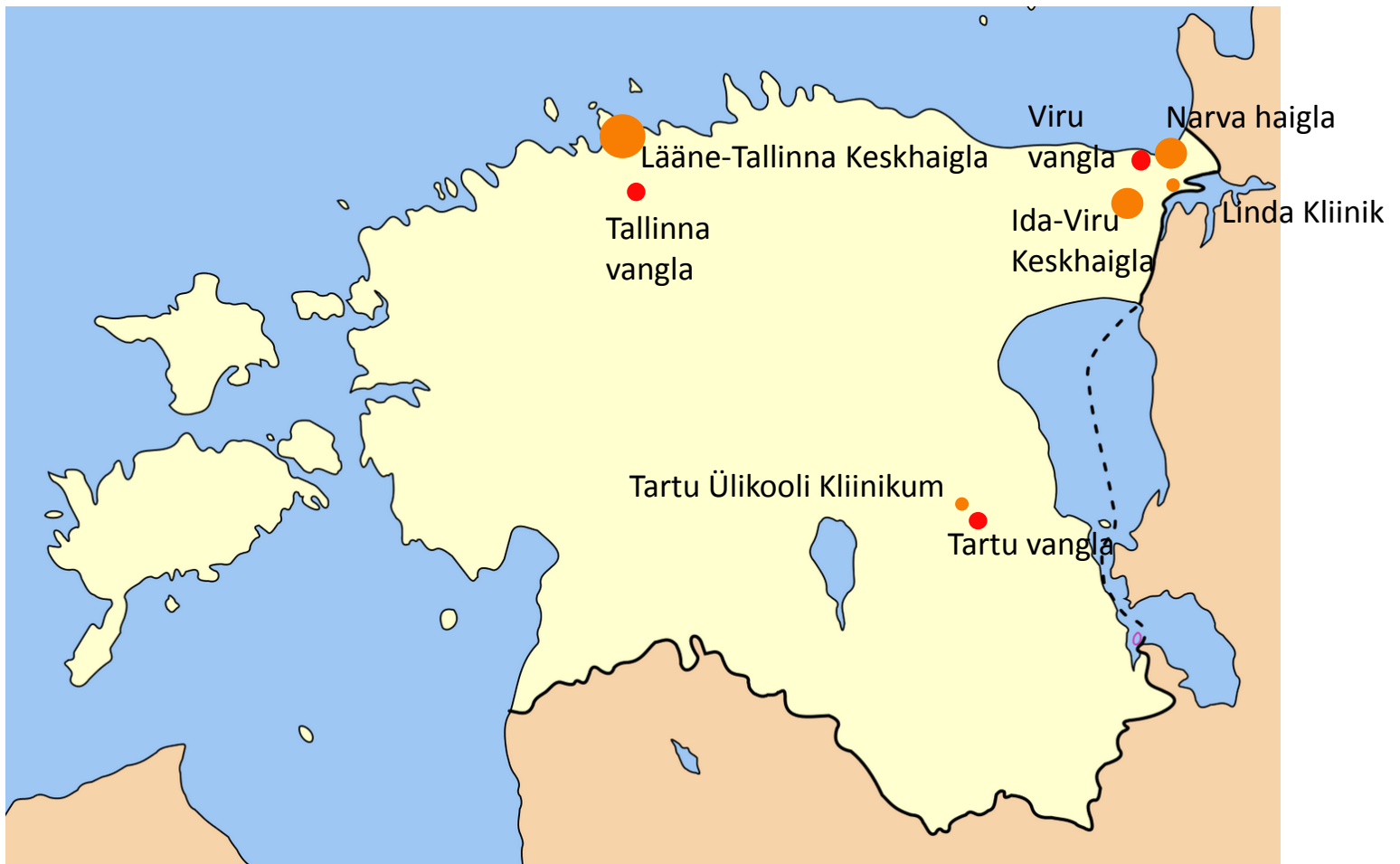




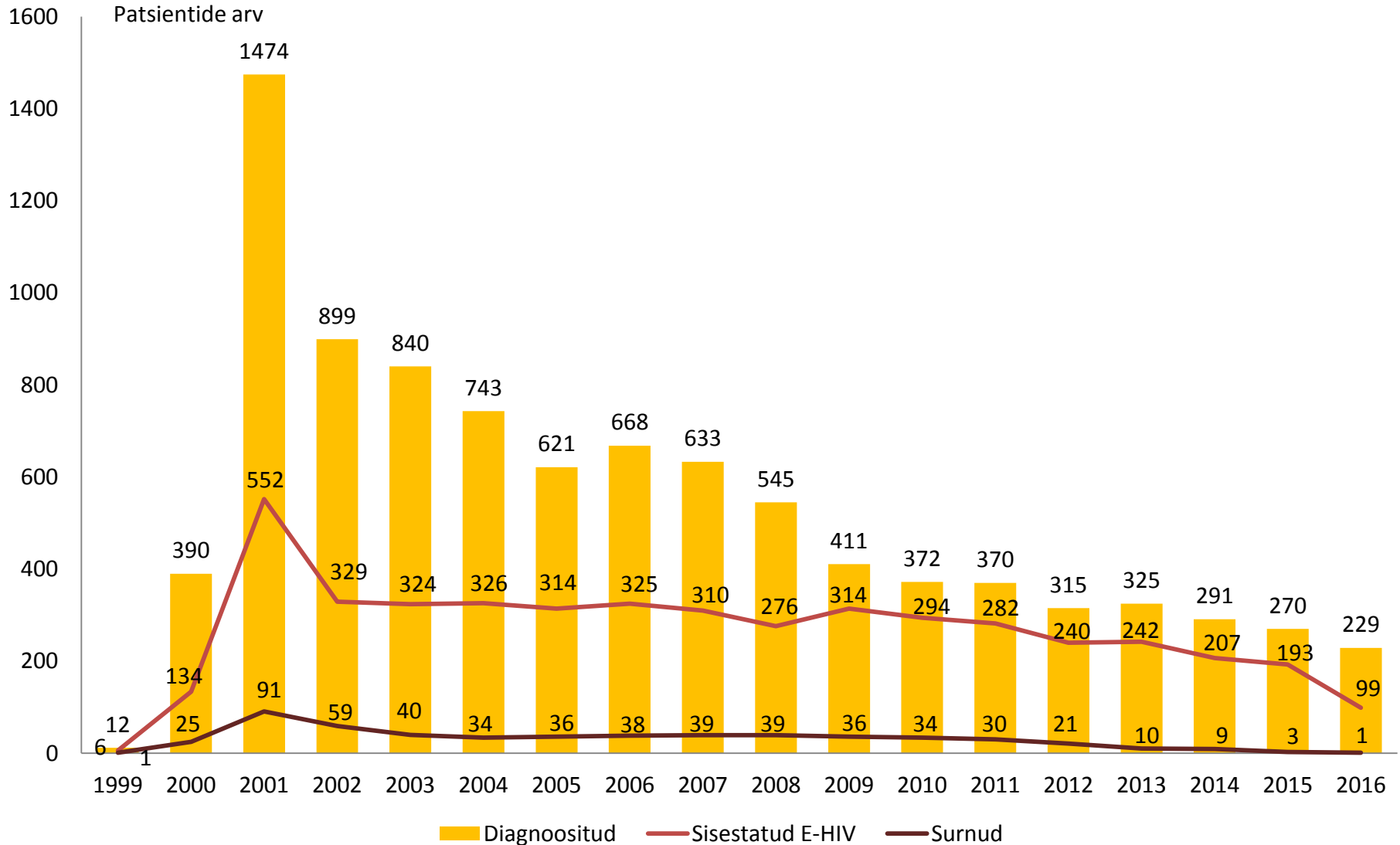
Andmekogu seisuga 31.12.2016

- Sisestatud 4767 patsienti , kumulatiivselt surnud 551
- Tbc diagnoositud 162-l E-HIV patsiendil
- AIDS diagnoositud E-HIV patsientidest 155 juhul
- Kvaliteedikontrolli on läbinud 13 % patsientide andmed

Andmeid sisestavad asutused (haiglad ja vanglad)

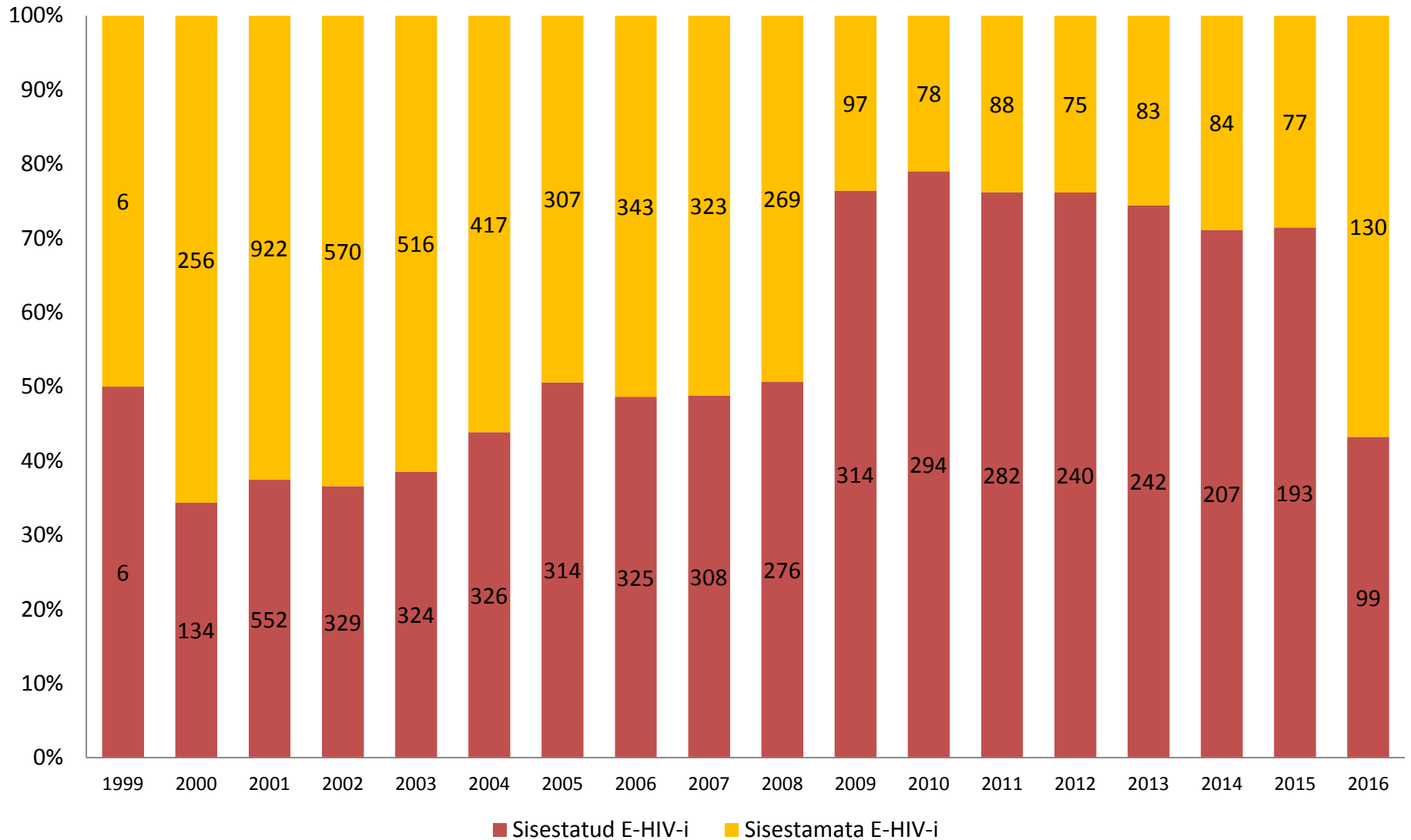


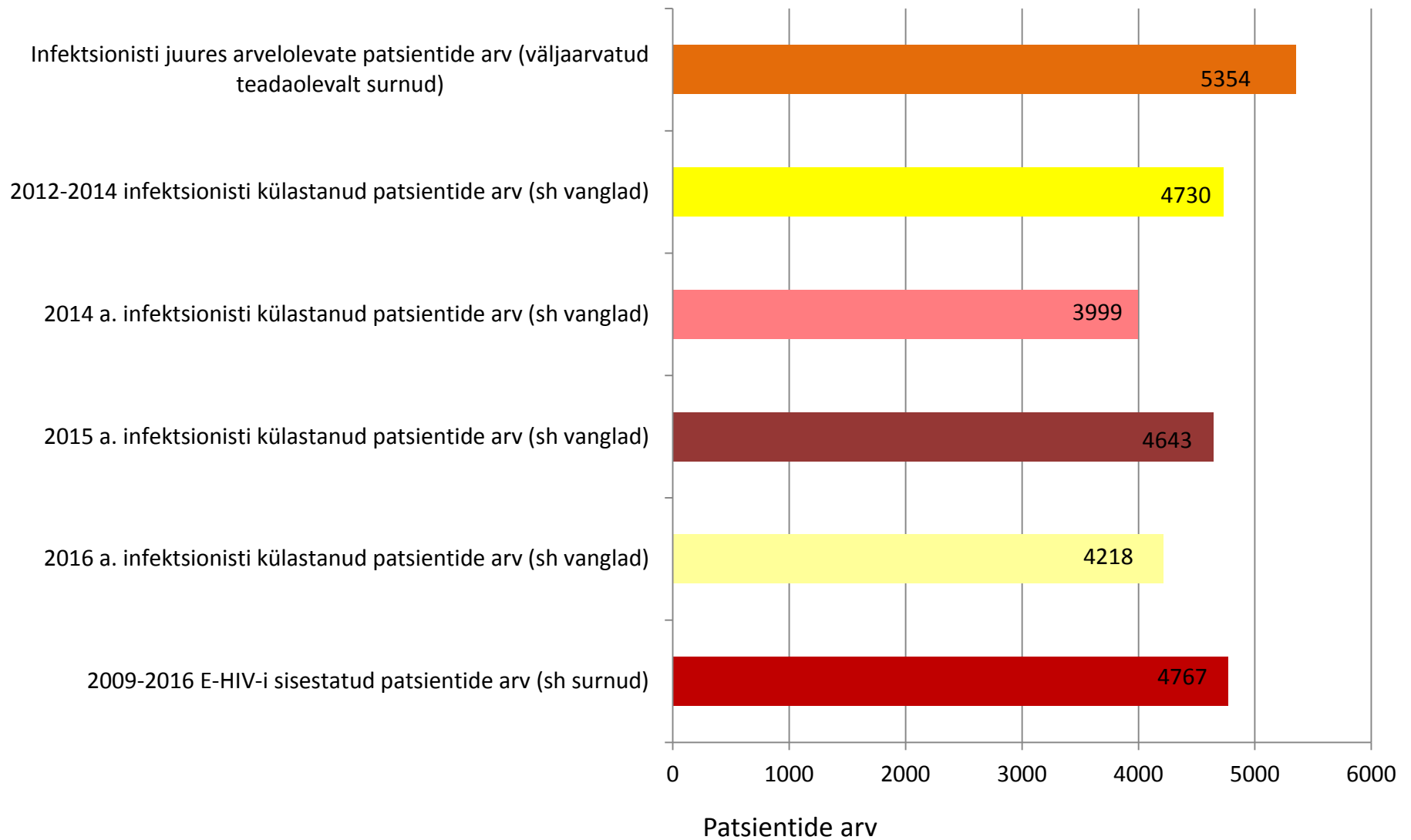
Uued HIV diagnoosid vs andmebaasi sisestatud



Allikas: Terviseamet, E-HIV

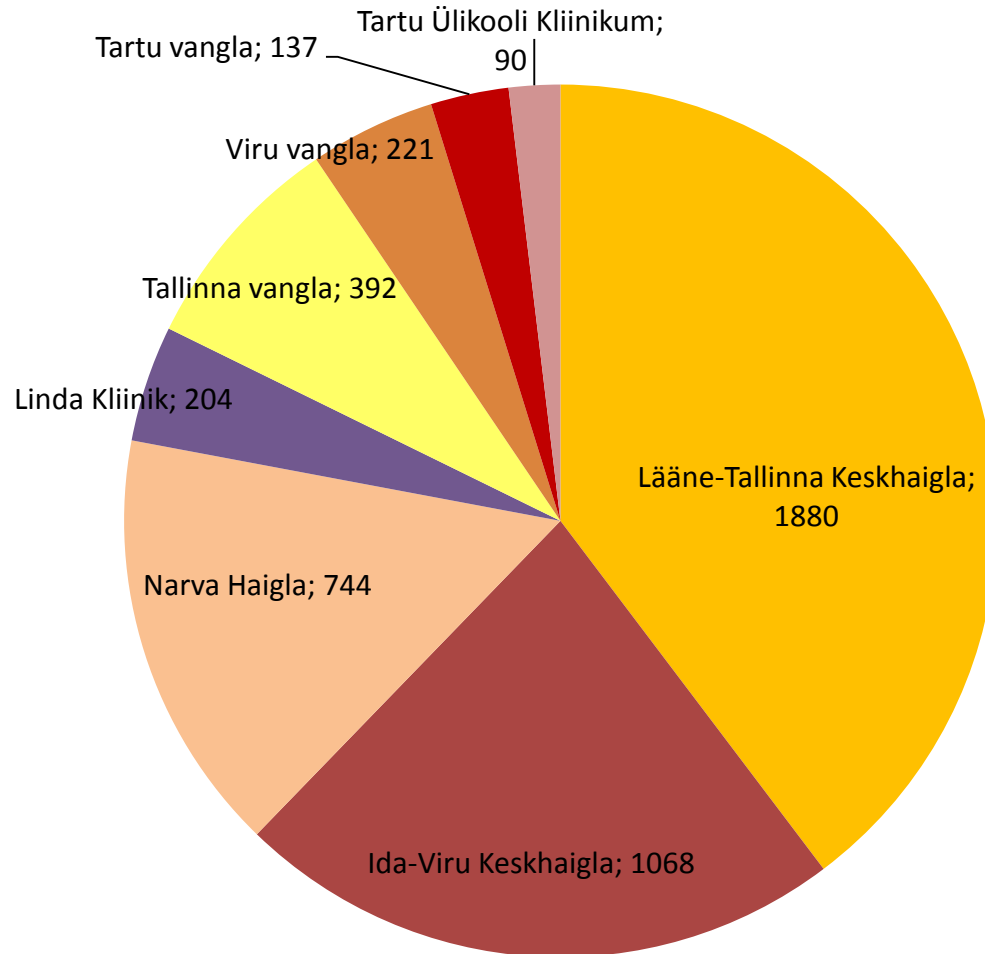
Sisestatud patsientide osakaal diagnoositest





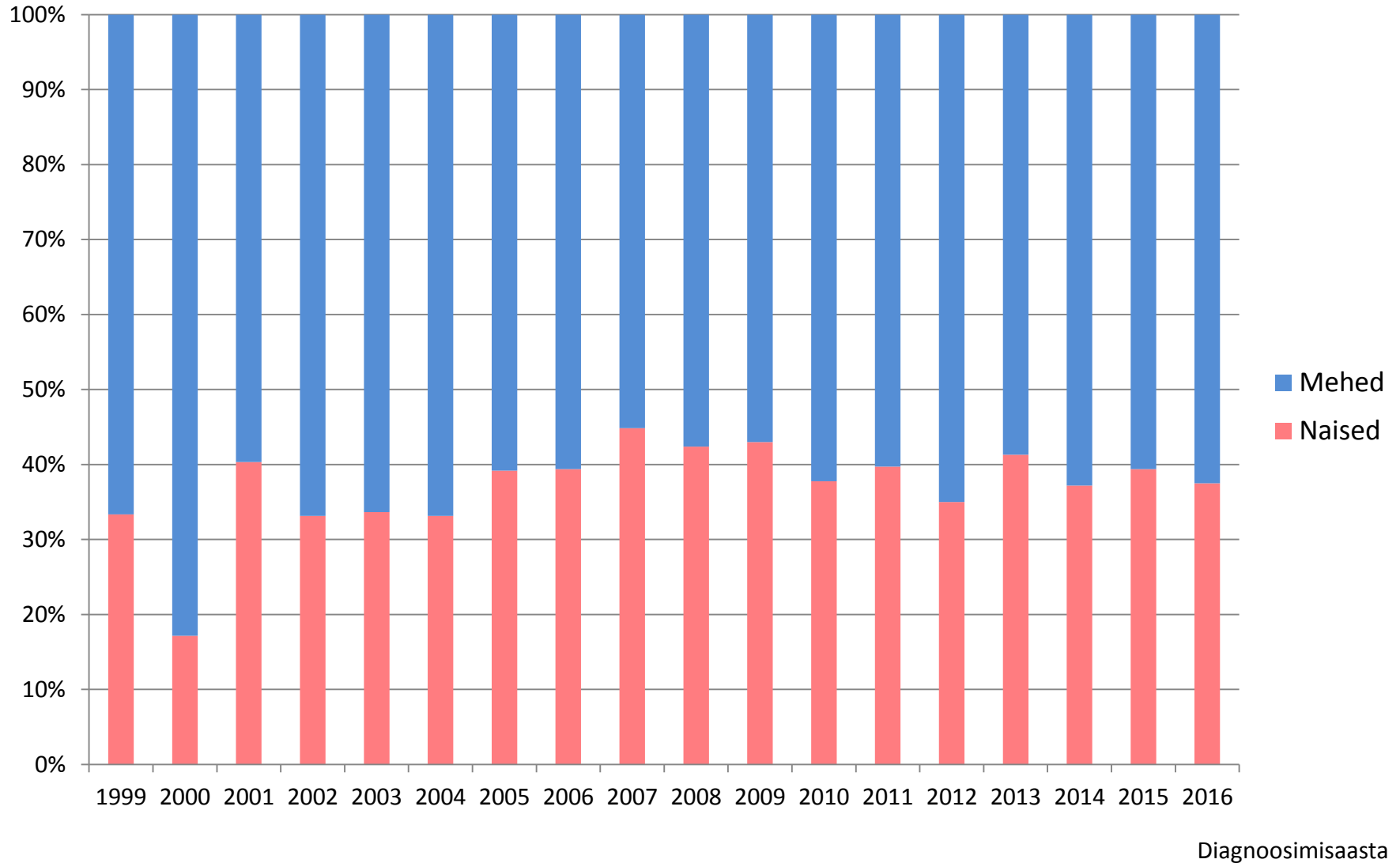
Allikas: Tervishoiuasutused, E-HIV

Sisestatud patsientide jaotus meditsiini-asutuste järgi



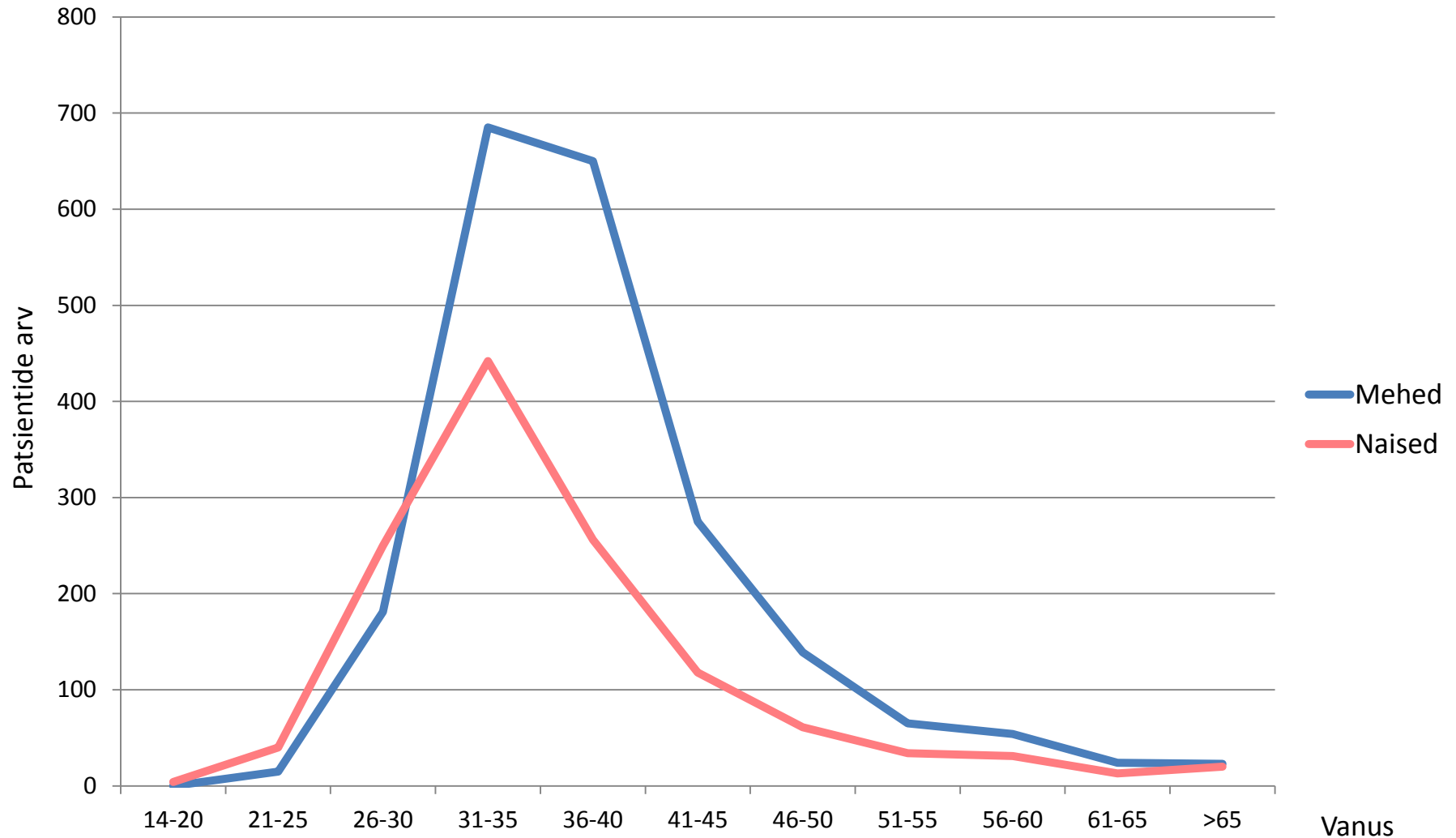
Tallinn, Harjumaa 1880
Ida-Virumaa 2016
Tartu, Lõuna-Eesti 90
Vanglad 781 (sh Murru vangla)

Sooline jaotuvus diagnoosimisel

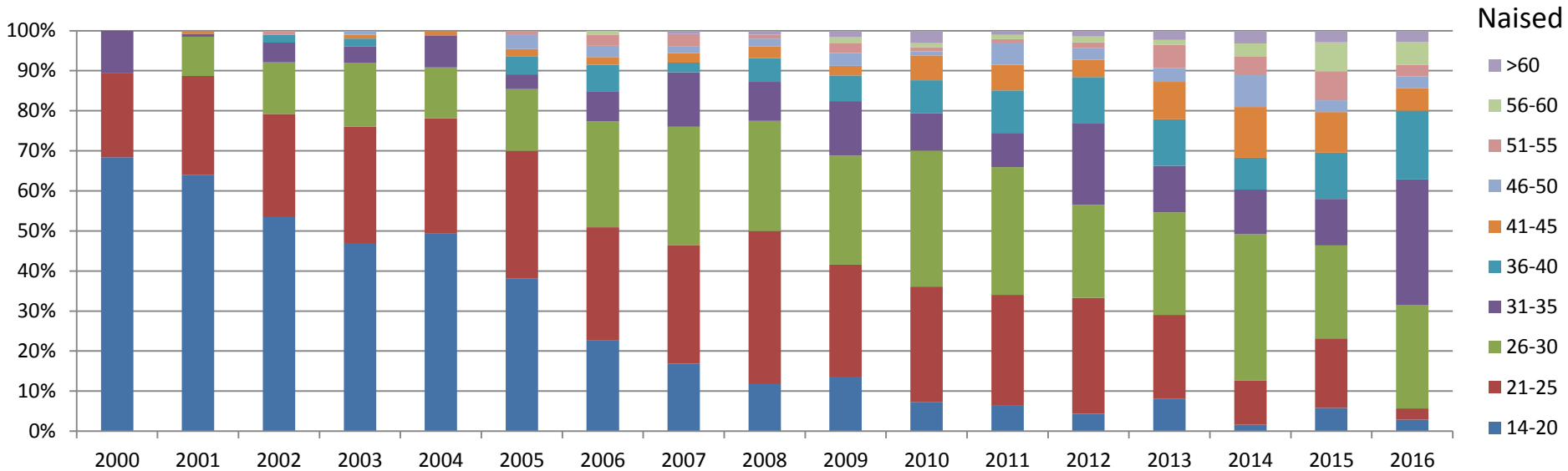
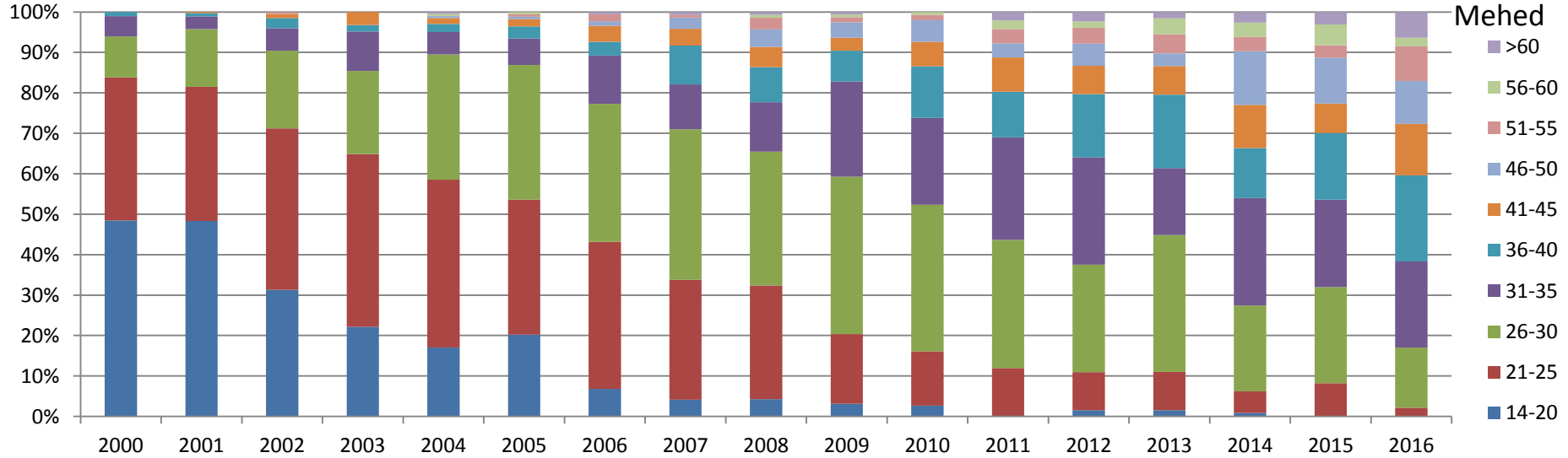




Vanusegrupid andmekogus seisuga 31.12.2016

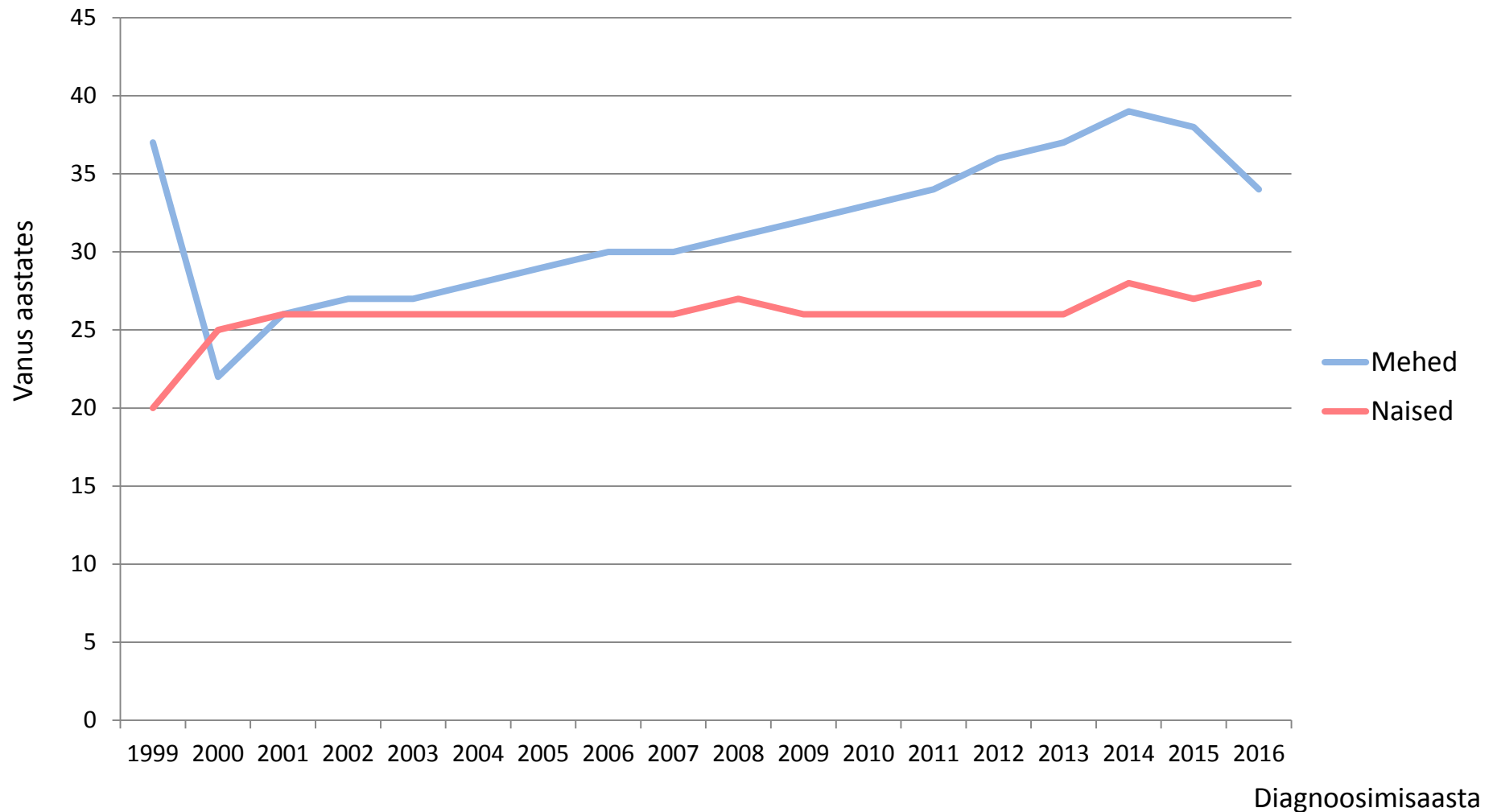


Vanused diagnoosimisel diagnoosimisaastate alusel



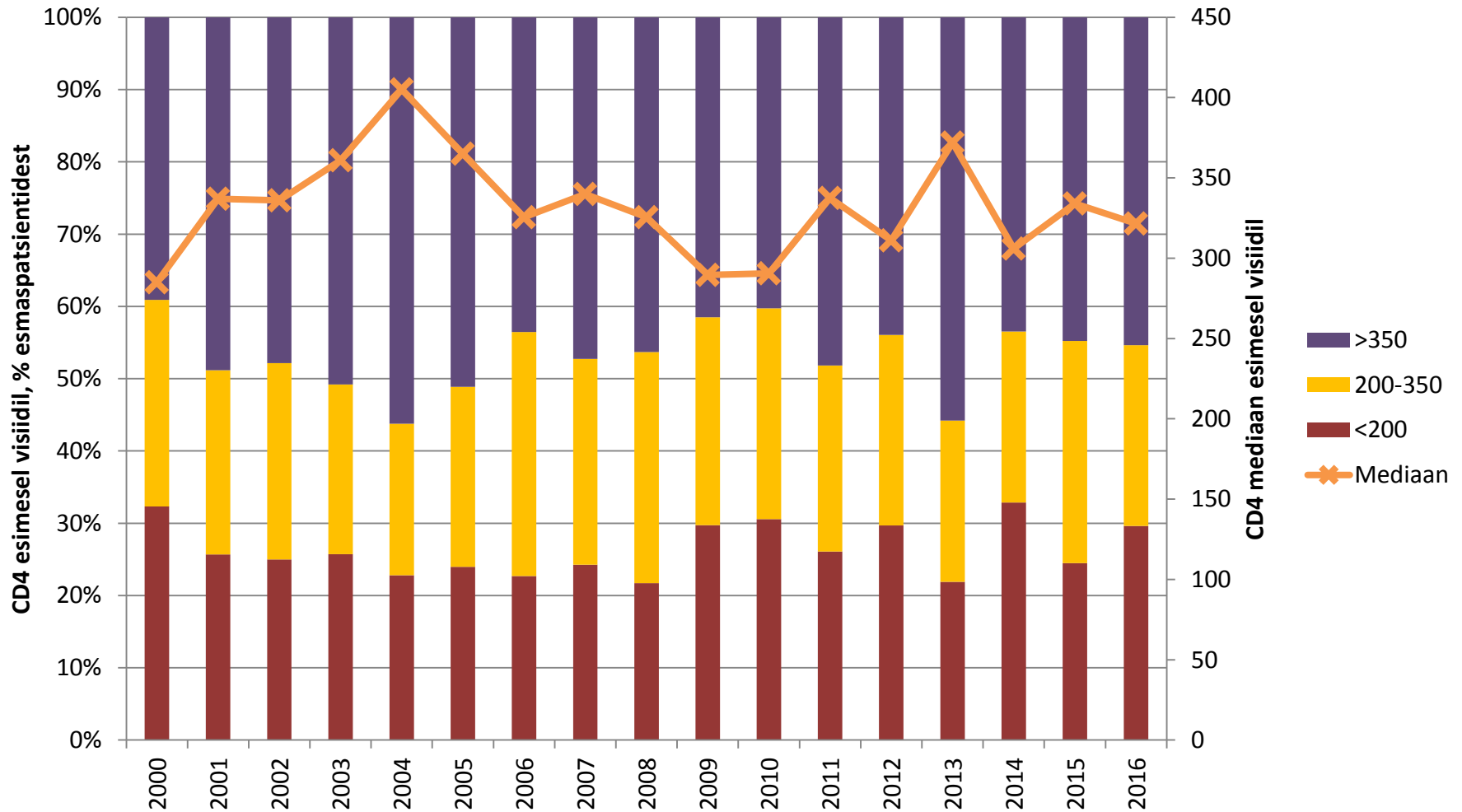


Mediaanvanused diagnoosimisel



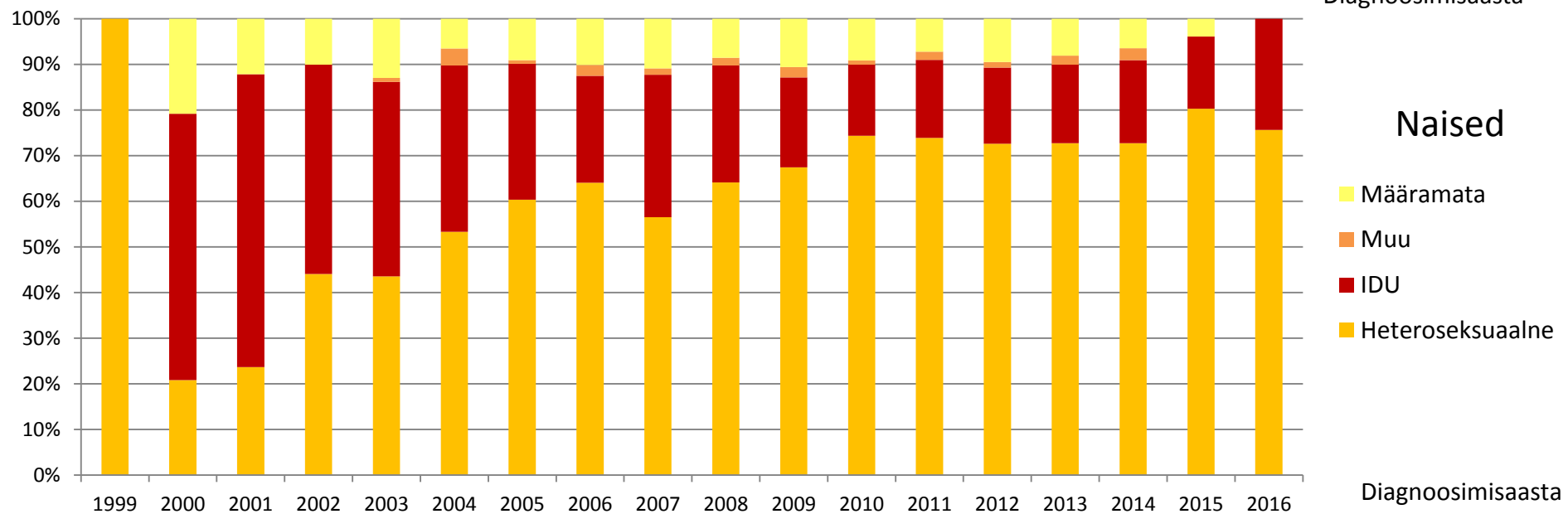
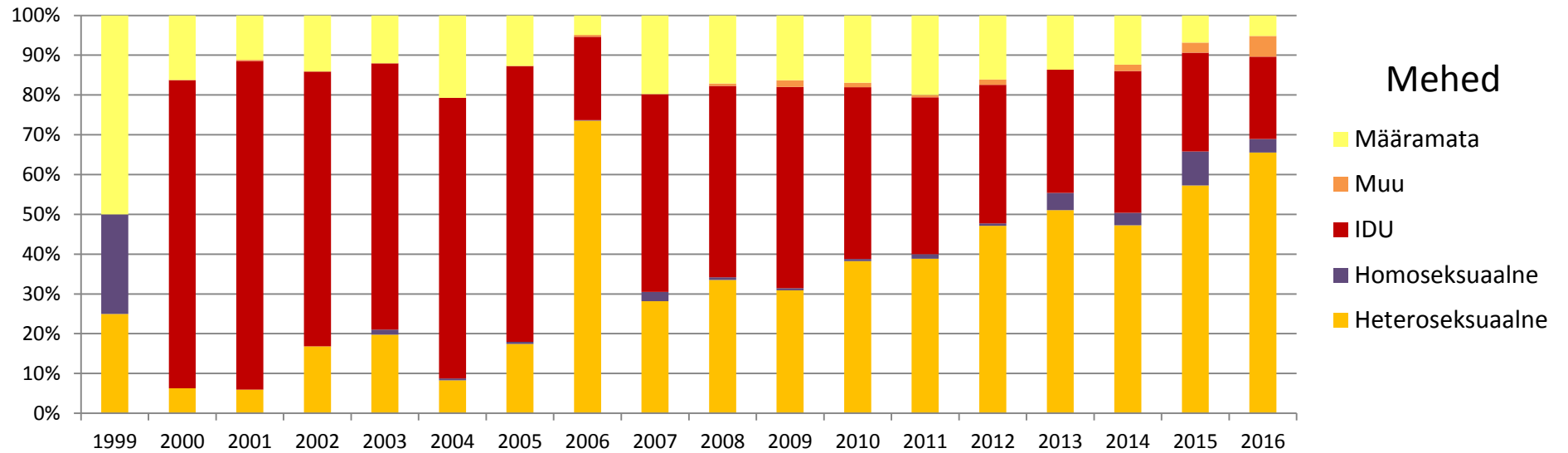


CD4 väärtused esimesel visiidil





Nakatumisteed vastavalt soole



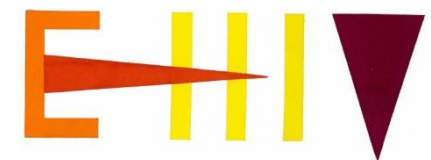
Koostööpartnerid

- Eesti Teadusfond
- Sotsiaalministeerium
- Eesti Teadusagentuur
- Tervise Arengu Instituut
- SA Archimedes



TerVE





Koostööpartnerid

- Tartu Ülikool, Bio- ja siirdemeditsiini instituut, mikrobioloogia osakond
- Tartu Ülikool, Peremeditsiini ja rahvatervishoiu instituut
- Quretec OÜ
- GlaxoSmithKline
- EuroCoord
- Professor Sunil K. Ahuja, M.D. Texase Ülikooli San Antonio Tervisekeskus