

Kuidas on tänane julgeolekuolukord muutnud Eesti piiriregioone?

Ettekanded:

1. **Ülevaade ESPONi uuringutest** – Ingmar Pastak (Tartu Ülikool, ESPONi Eesti kontaktpunkt)
2. **Keskus-tagamaa mõtlemiselt toimerajoonide põhisele planeerimisele** - Erik Gløersen (Spatial Foresight GmbH, ESPON Nostageo)
3. **Paneeldiskussioon**
Moderaator: Garri Raagmaa (Tartu Ülikool, ESPONi Eesti kontaktpunkt)

Paneeldiskussioonis osalejad:

- Hardi Murula (Ida-Virumaa Omavalitsuste Liit)
- Eedi Sepp (ESPONi Seirekomitee, Regionaal- ja põllumajandusministeerium)
- Veiko Sepp (TÜ RAKE)
- Tiit Toots (Võrumaa Omavalitsuste Liit)
- Britt Vahter (Rõuge Vallavalitsus)



PIIRIREGIOONID JA ESPON

Postimees K, 13.03.2024 Ilm Horoskoop

Lõuna-Eesti Postimees Uudised Arvamus Galerii Video Persoon Elu Kuulutused Sport

Tellijale

Lõuna-Eesti Postimees > Arvamus

INTERVJUU } Minister Madis Kallas: nii suurt ebavõrdsust pole Eestis varem olnud ⁽¹⁶⁾

Regionaalminister Madis Kallas kinnitas Võrus antud intervjuus, et maakonnalinnade elujõust sõltub kogu Eesti regionaalareng. — Foto: Arved Breidaks



Arved Breidaks, reporter
9. märts 2024, 00:00



REUTERS® World Business Markets Sustainability Legal Breakingviews Technology Investic

European countries tighten borders

Reuters

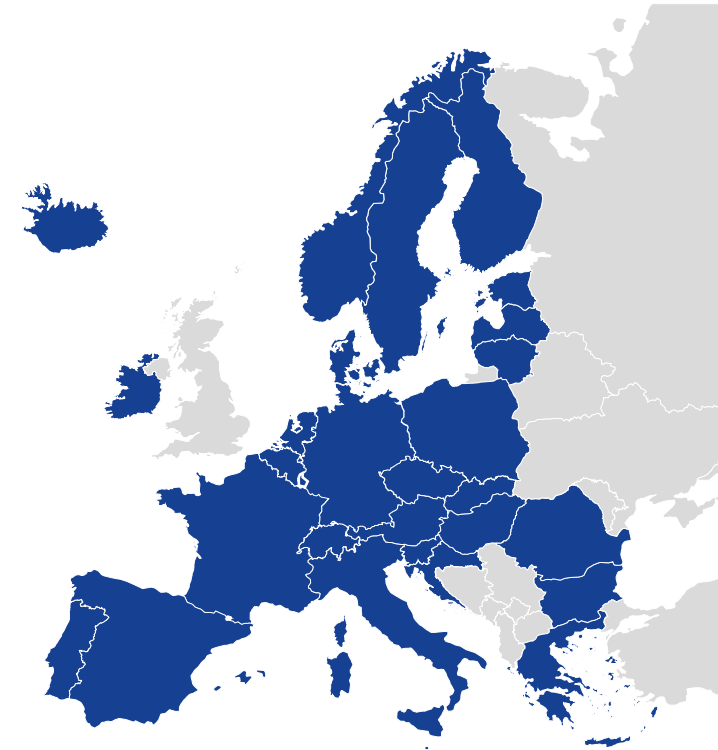
January 11, 2024 4:38 PM GMT+2 · Updated 2 months ago



[1/2] A German federal police Bundespolizei officers stops a vehicle during a patrol along the German-Polish border to prevent illegal migration near Forst, Germany, October 12, 2023. REUTERS/Fabrizio Bensch/File Photo
[Purchase Licensing Rights](#)

PIIRIREGIOONID JA ESPON

- **ESPON** (European Spatial Planning Observatory Network) - Euroopa Territoriaalse koostöö programm
- **Põhitegevus:**
 - regionaaluuringud ja -analüüsid
 - ruumilise planeerimise ja regionaalarenguga tegelevate osapoolte koostöö ja võrgustumise toetamine
 - teavitustegevused



www.espon.eu / espon.ut.ee

KESKUS-TAGAMAA MÕTLEMISELT TOIME- REGIOONIDE PÕHISELE MÕTLEMISELE

Typology of metro regions

- capital metro region
- second-tier metro region
- smaller metro region
- non-metro region
- no data

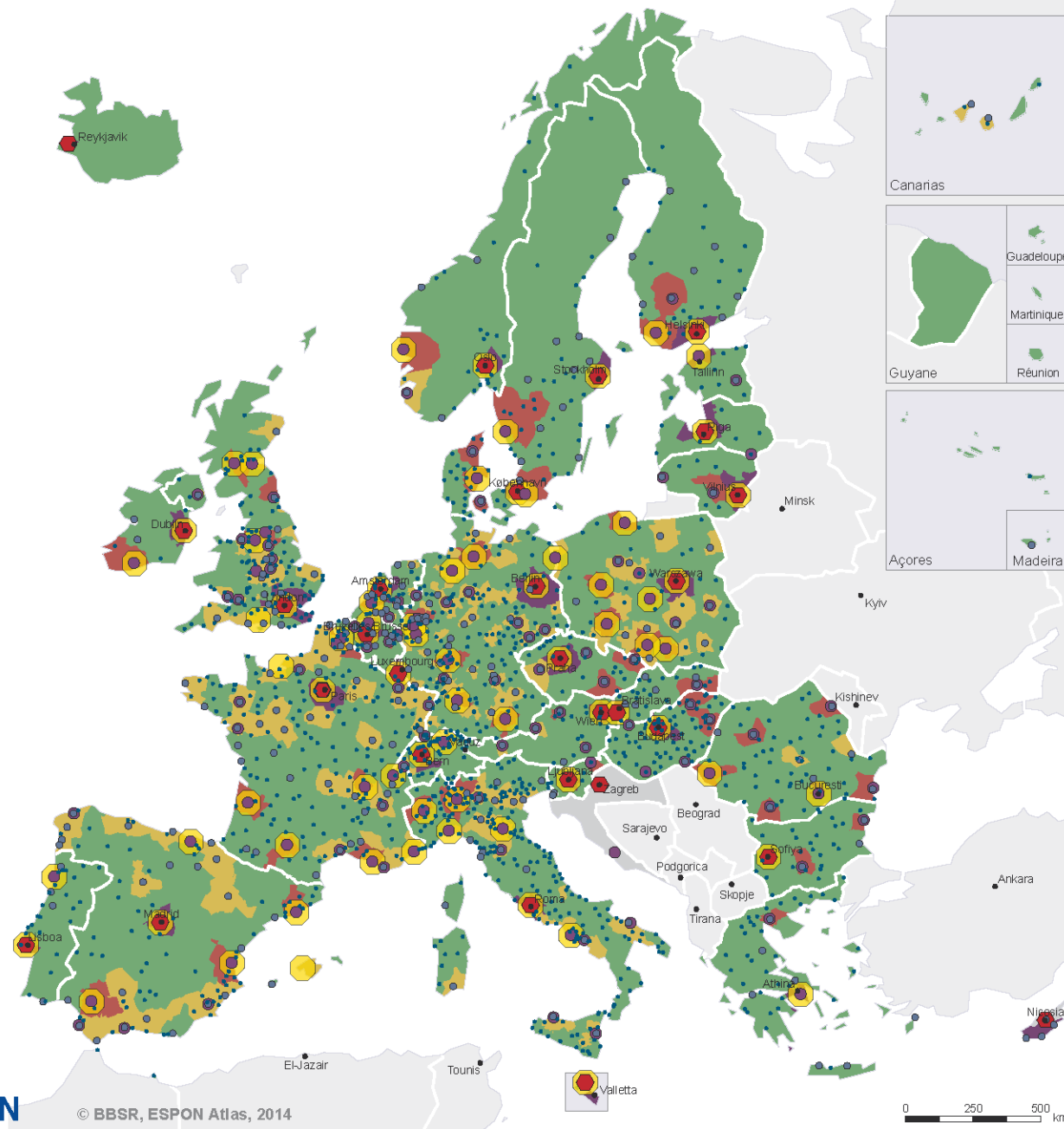
FUA & MEGA classification*

- MEGA
- capital city
- second-tier city
- transnational/national FUA
- regional/local FUA

*FUA: Functional Urban Area
MEGA: Metropolitan European Growth Area

Regional level: NUTS 3 (2006)
Source: ESPON CU Typology Compilation, 2011
Origin of data: DG Regio, 2011
© UMS RIATE for administrative boundaries

This map does not necessarily reflect the opinion of the ESPON Monitoring Committee



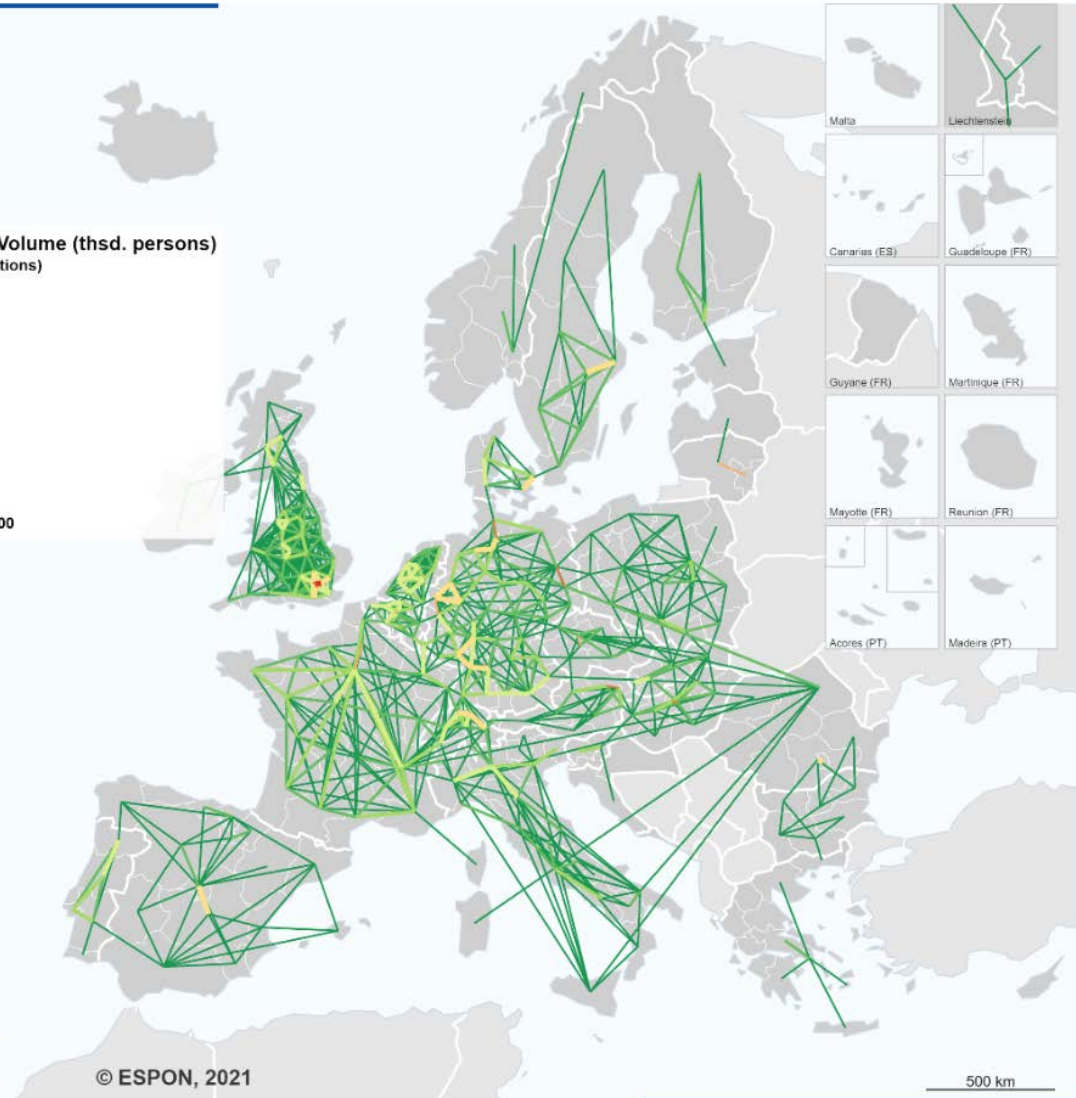
PENDELRÄNNE

Commuters, 2018

Permil of Total Flow Volume (thsd. persons) (Aggregation of both directions)



Data displayed:
Percentiles from 0.82 to 1.00



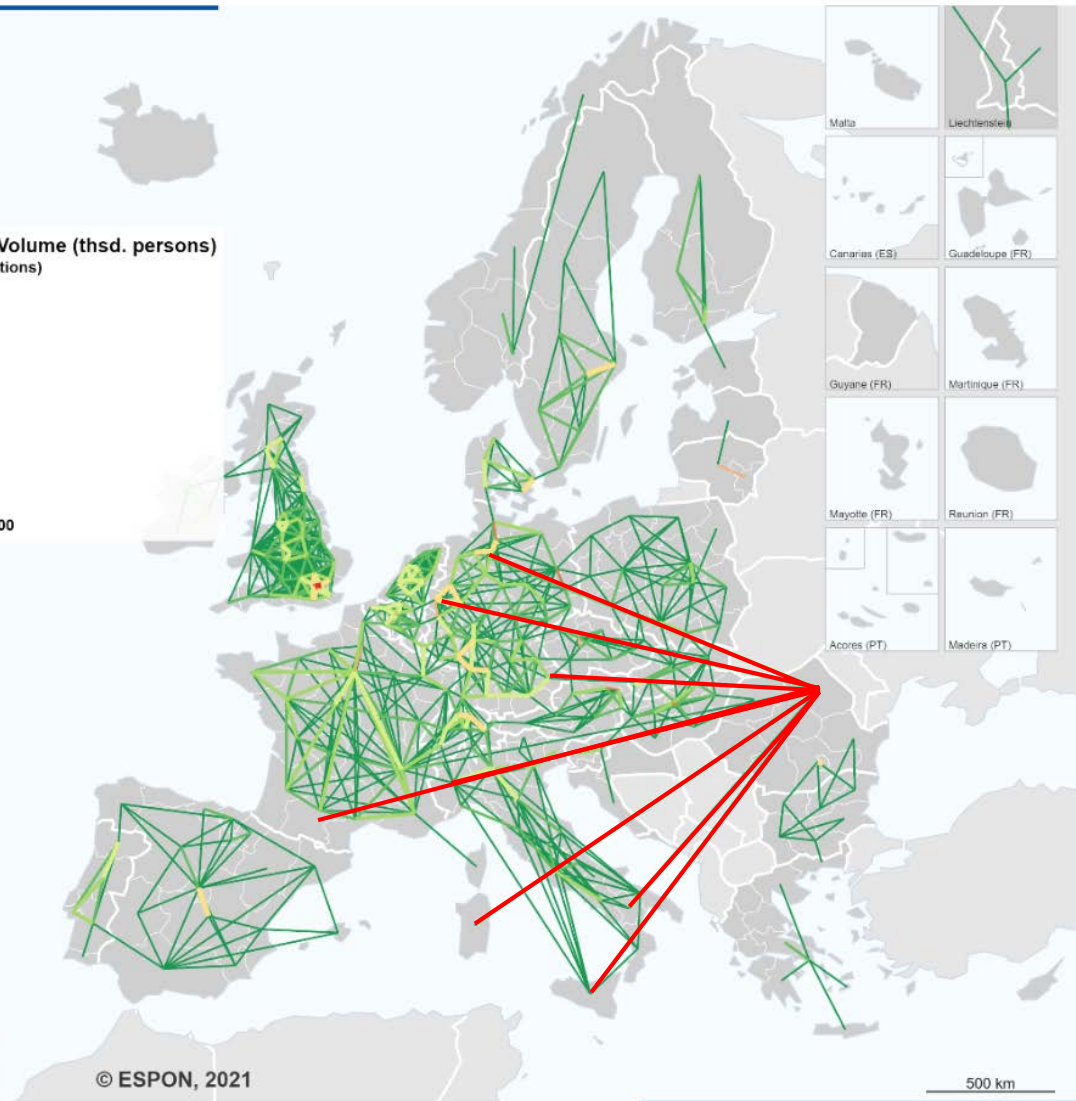
PENDELRÄNNE

Commuters, 2018

Permil of Total Flow Volume (thsd. persons)
(Aggregation of both directions)

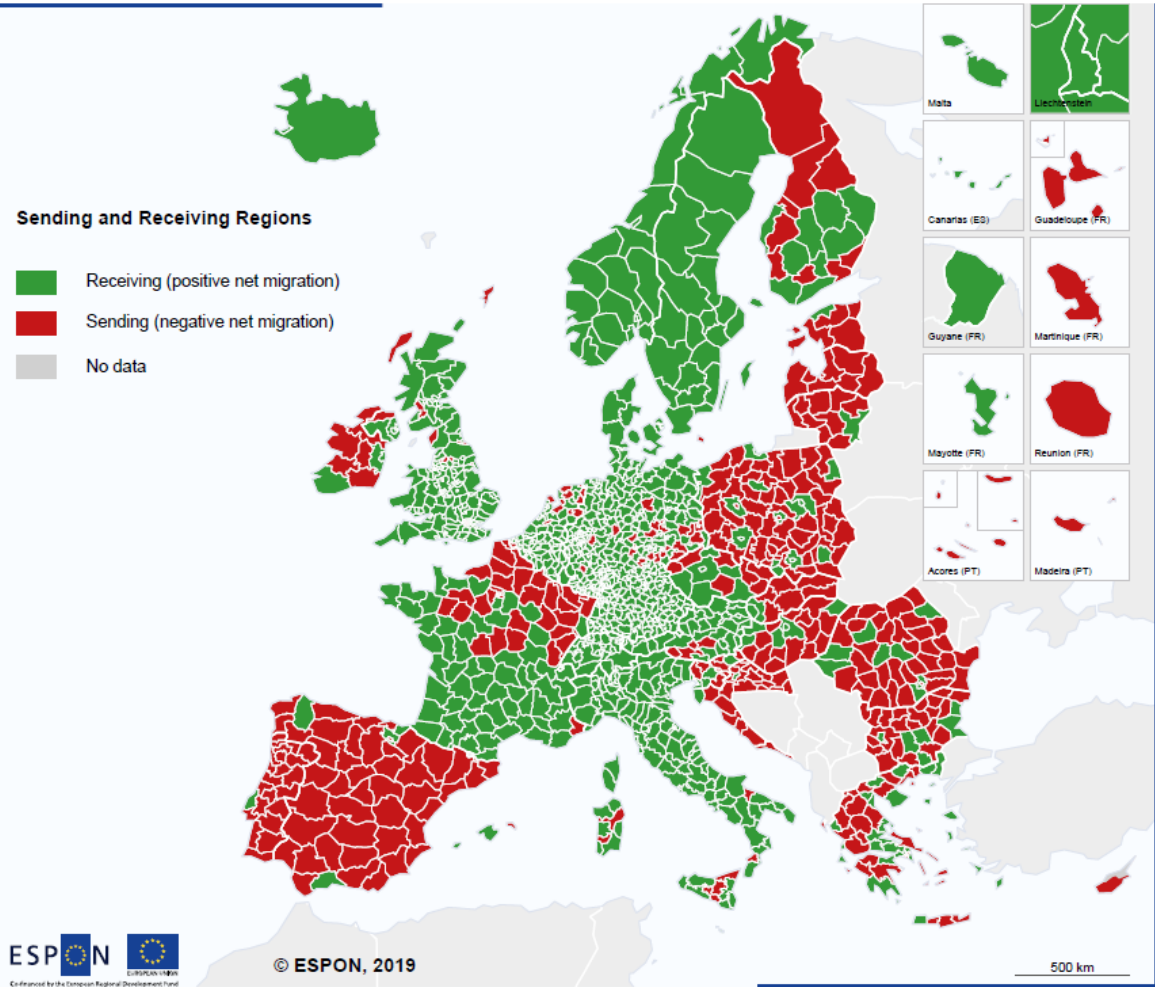


Data displayed:
Percentiles from 0.82 to 1.00

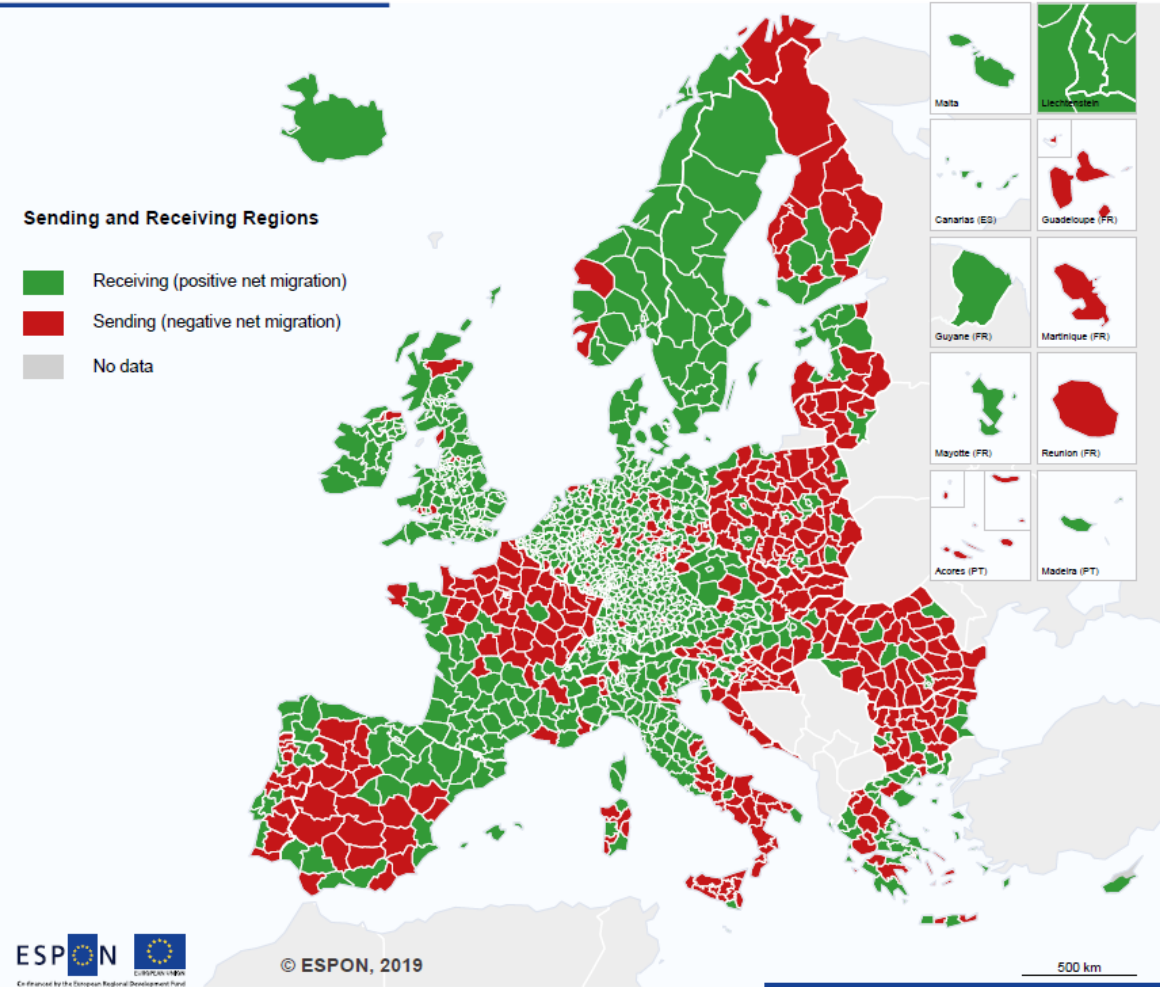


RÄNDEPÖÖRE

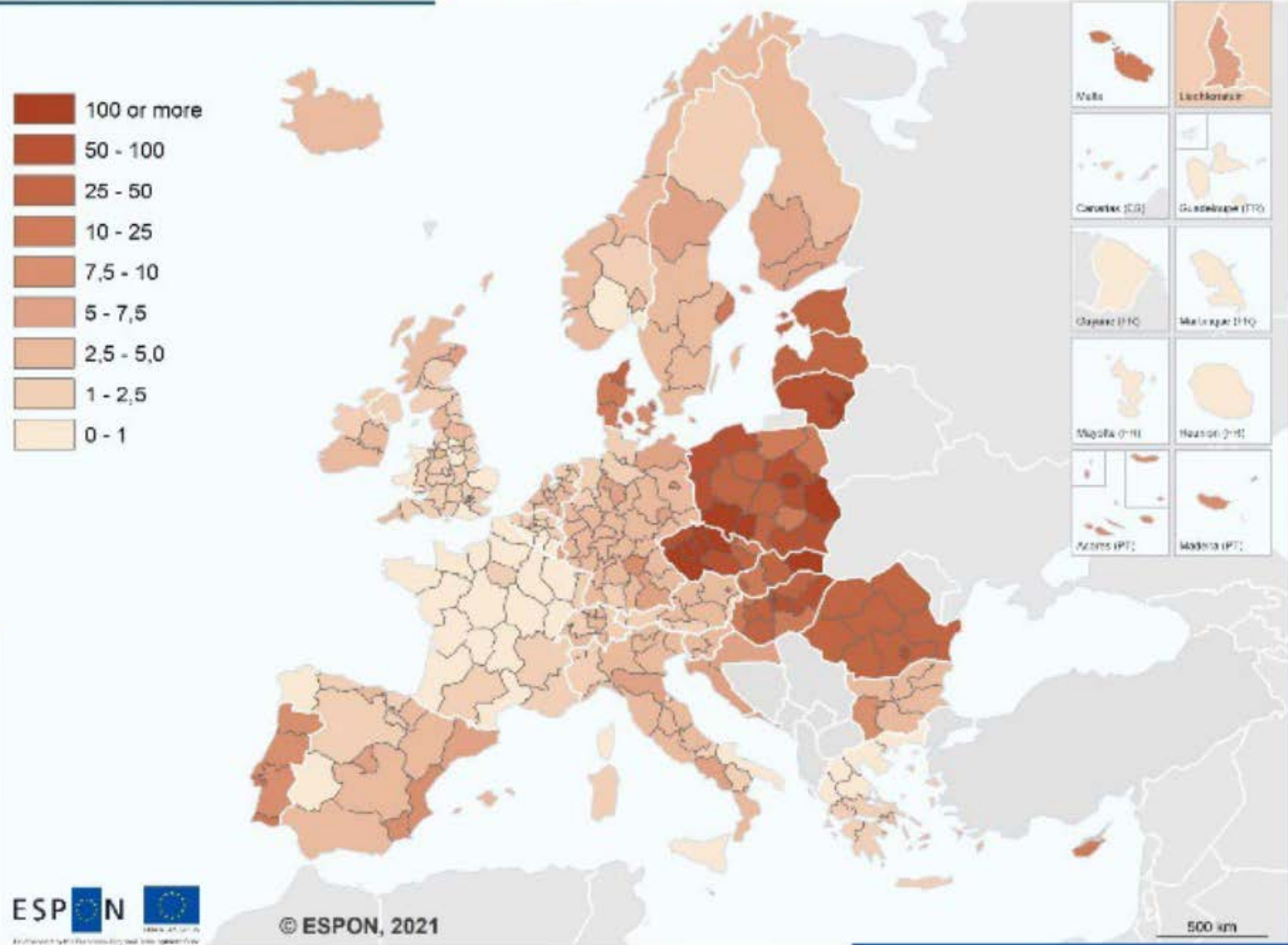
In- and out-migration, 2012-2016



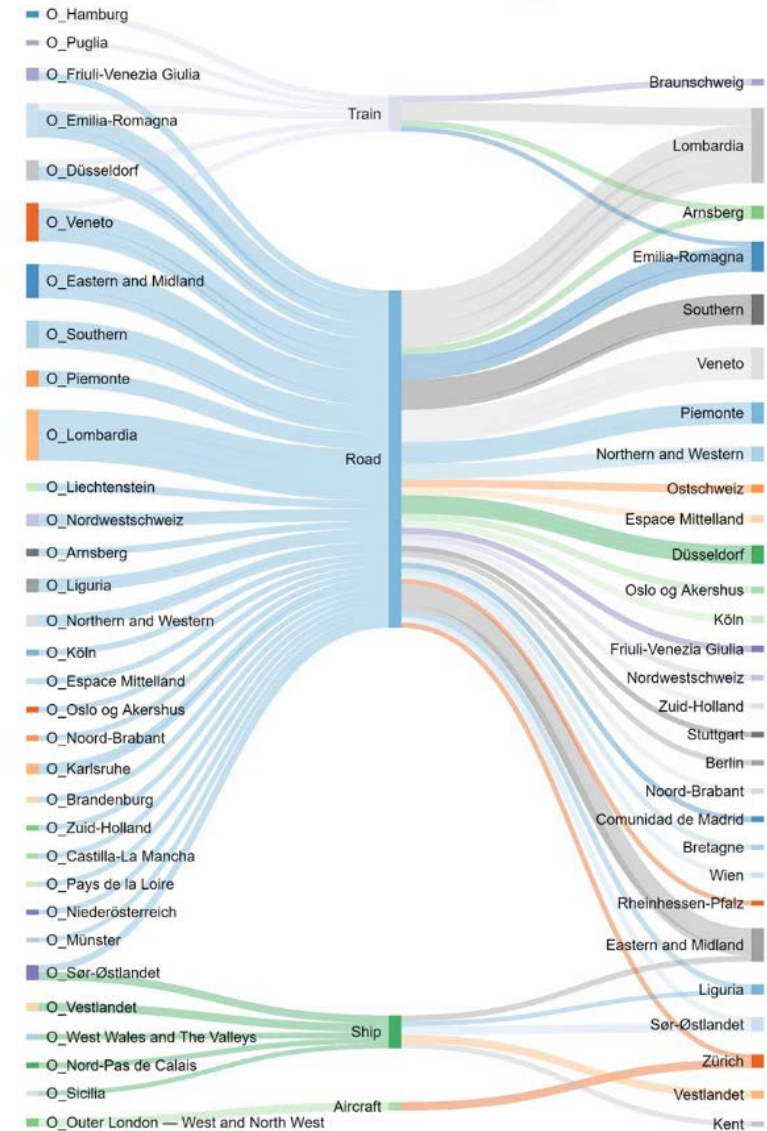
In- and out-migration, 2017



Ukrainians - inflow to regions per 1 000 inhabitants, scenario D



Top-50 inter-regional flows by transport mode. ROW and Intra-regional excluded. Average 2010-2018. % over €.



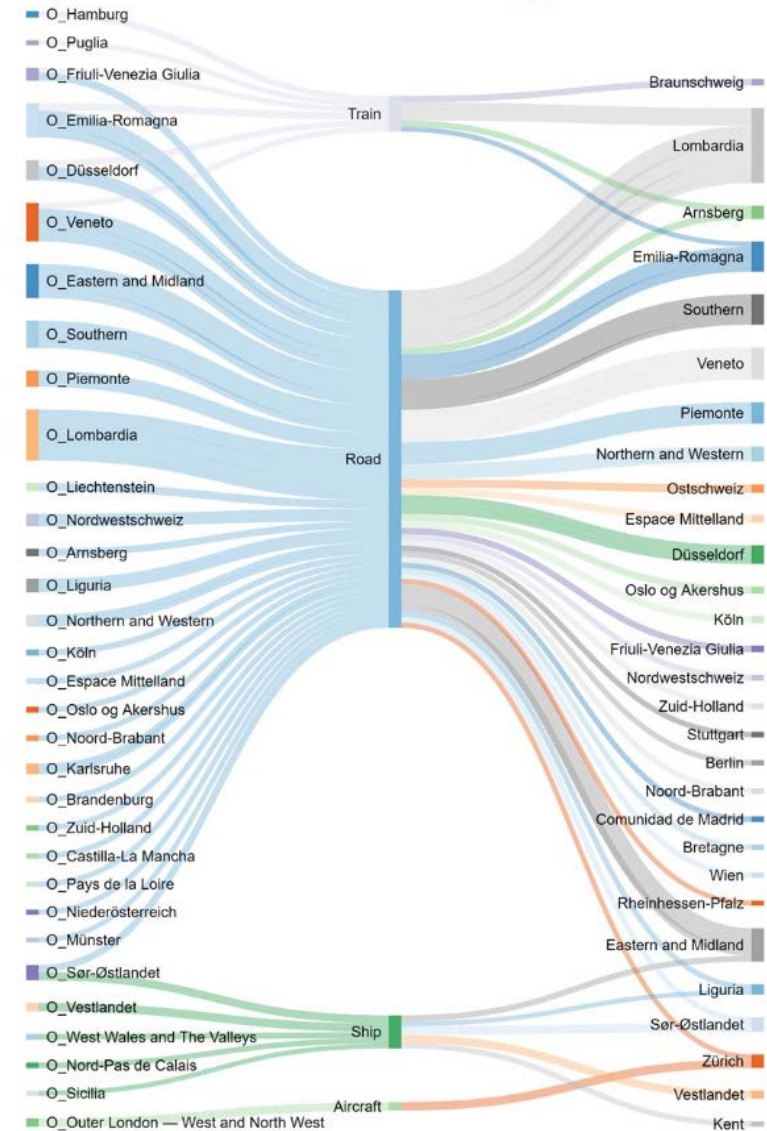
→ ESPON IRiE: Interregional Relations in Europe

<https://www.espon.eu/programme/projects/espon-2020/applied-research/interregional-relations-europe>

KAUBAVOOD



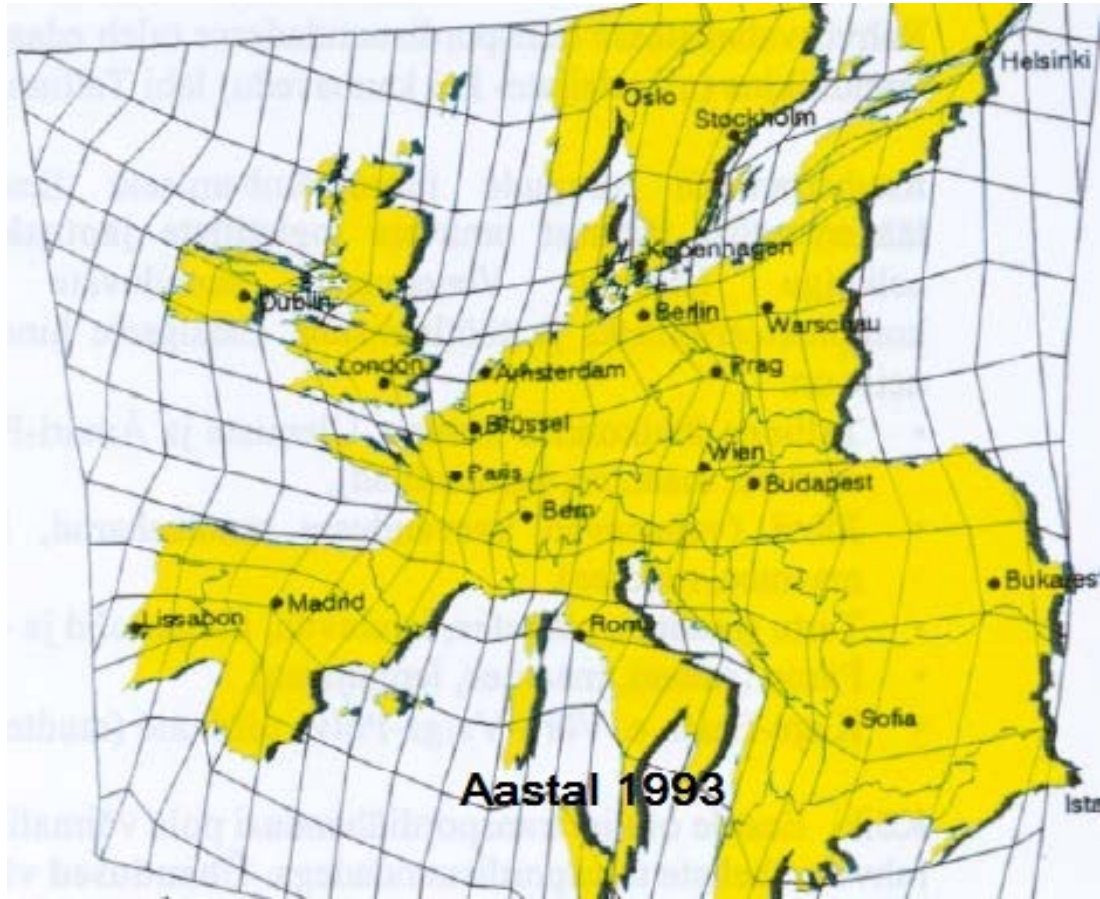
Top-50 inter-regional flows by transport mode. ROW and Intra-regional excluded. Average 2010-2018. % over €.



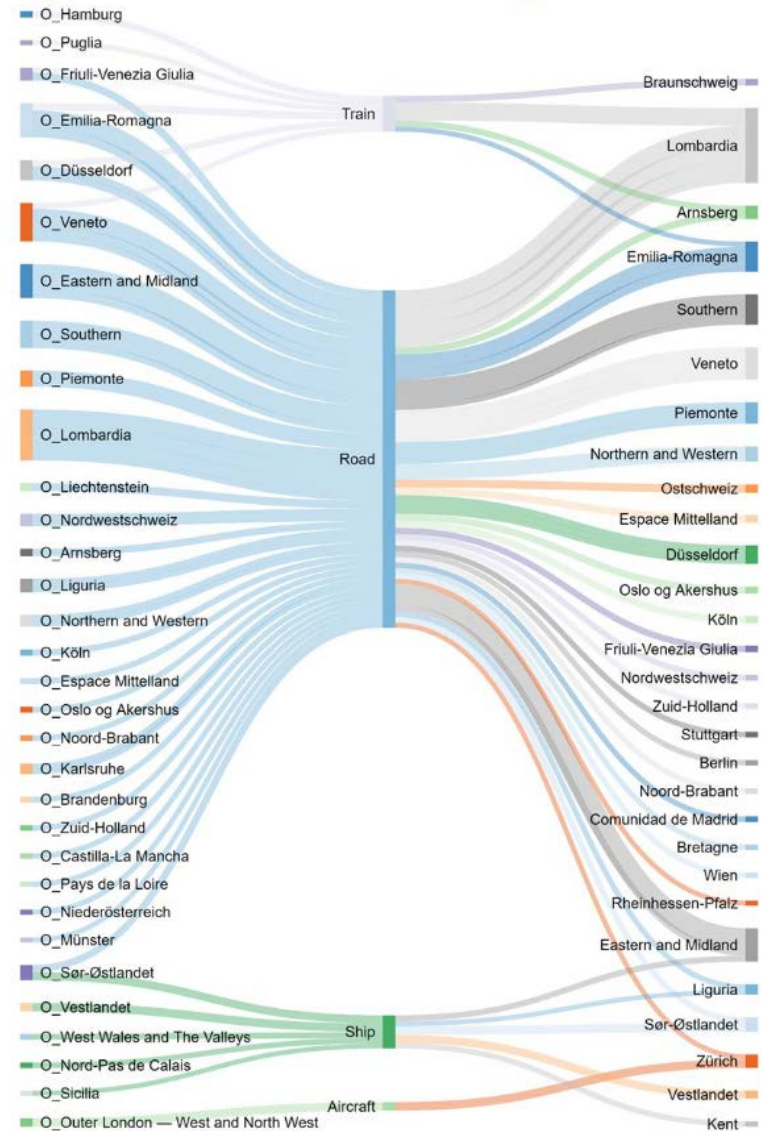
→ ESPON IRiE: Interregional Relations in Europe

<https://www.espon.eu/programme/projects/espon-2020/applied-research/interregional-relations-europe>

KAUBAVOOD



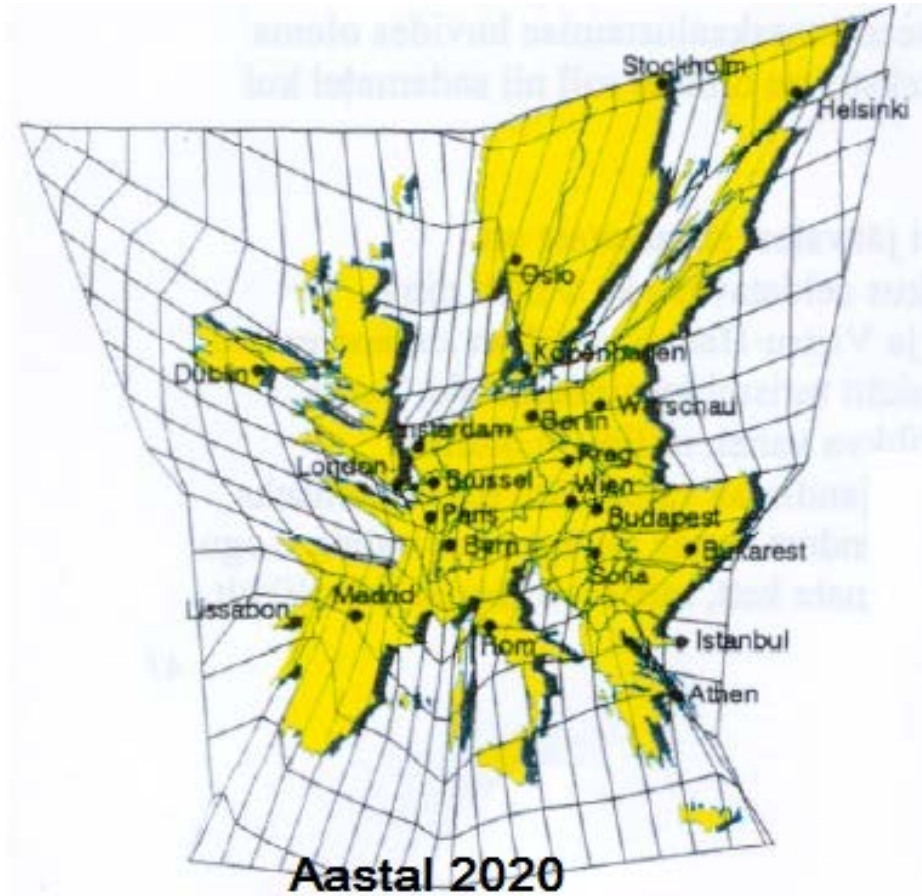
Top-50 inter-regional flows by transport mode. ROW and Intra-regional excluded. Average 2010-2018. % over €.



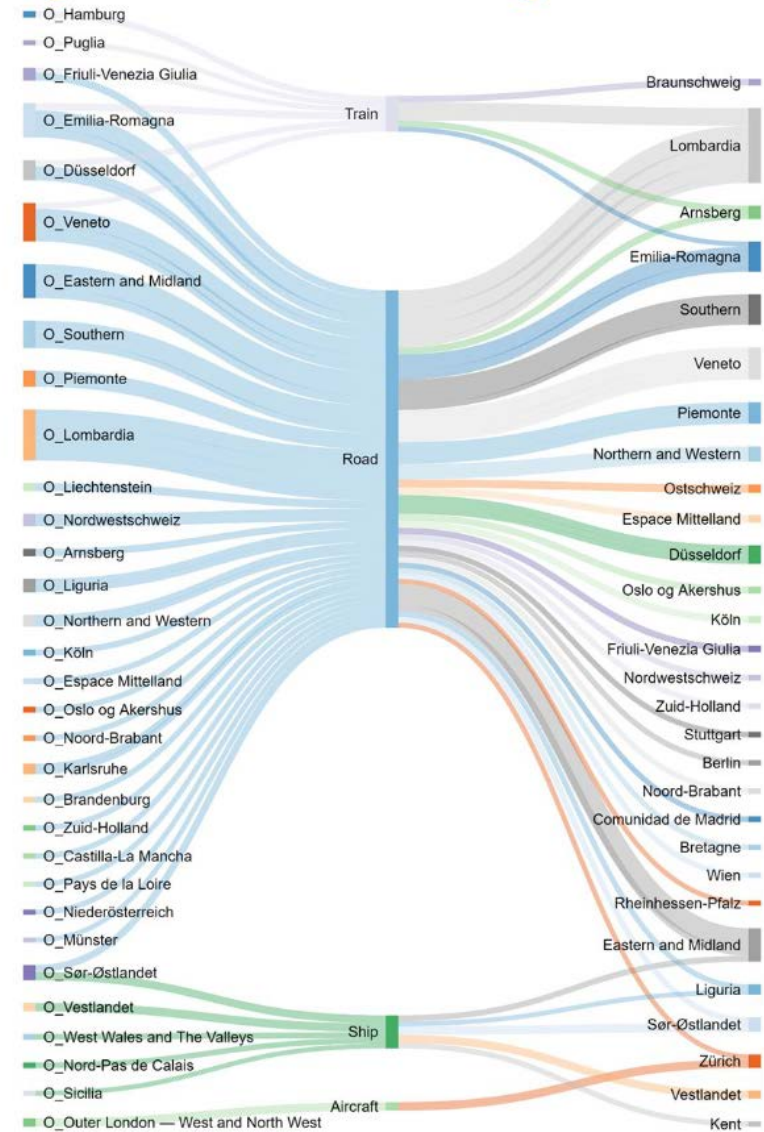
→ ESPON IRiE: Interregional Relations in Europe

<https://www.espon.eu/programme/projects/espon-2020/applied-research/interregional-relations-europe>

KAUBAVOOD



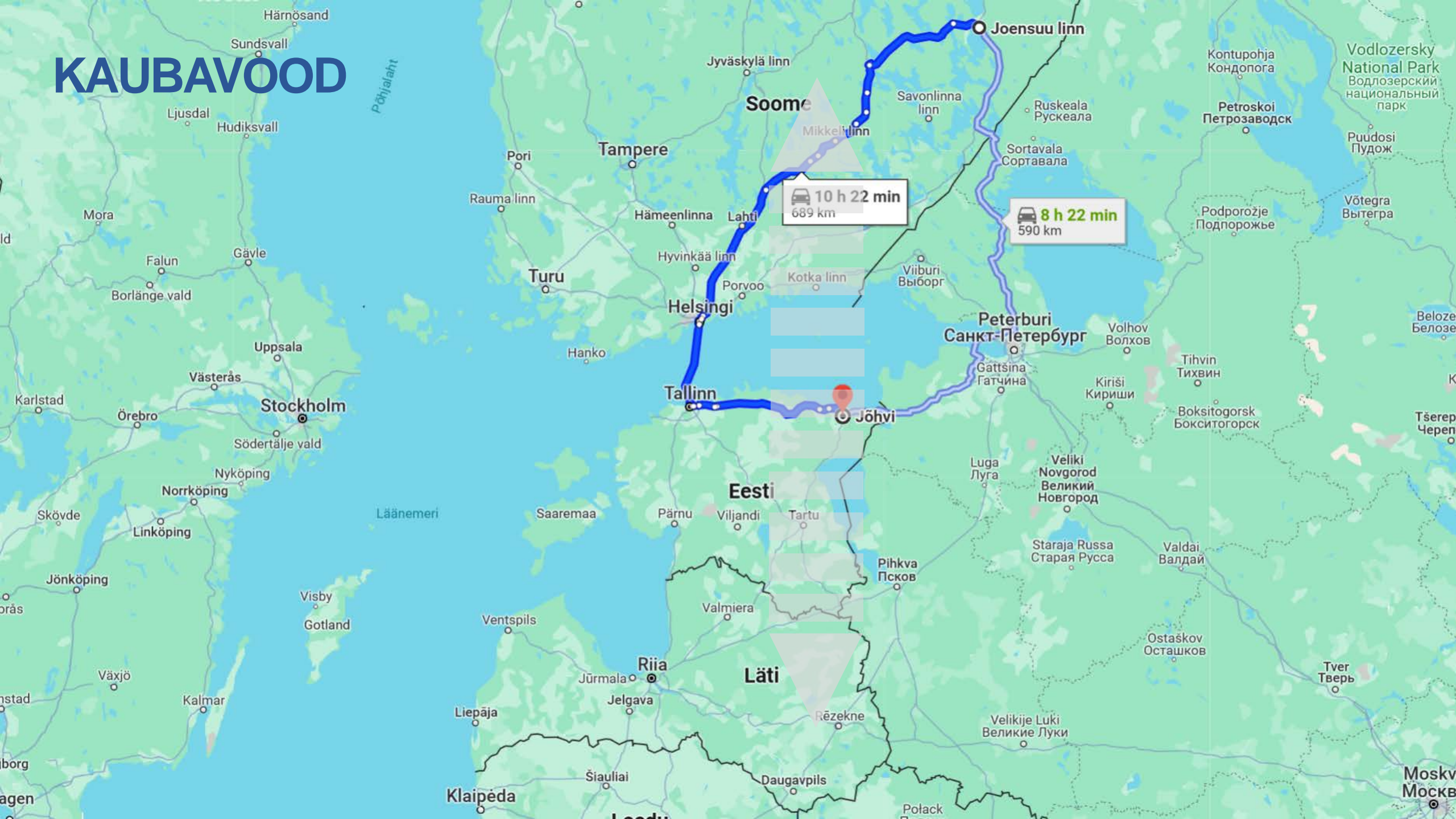
Top-50 inter-regional flows by transport mode. ROW and Intra-regional excluded. Average 2010-2018. % over €.



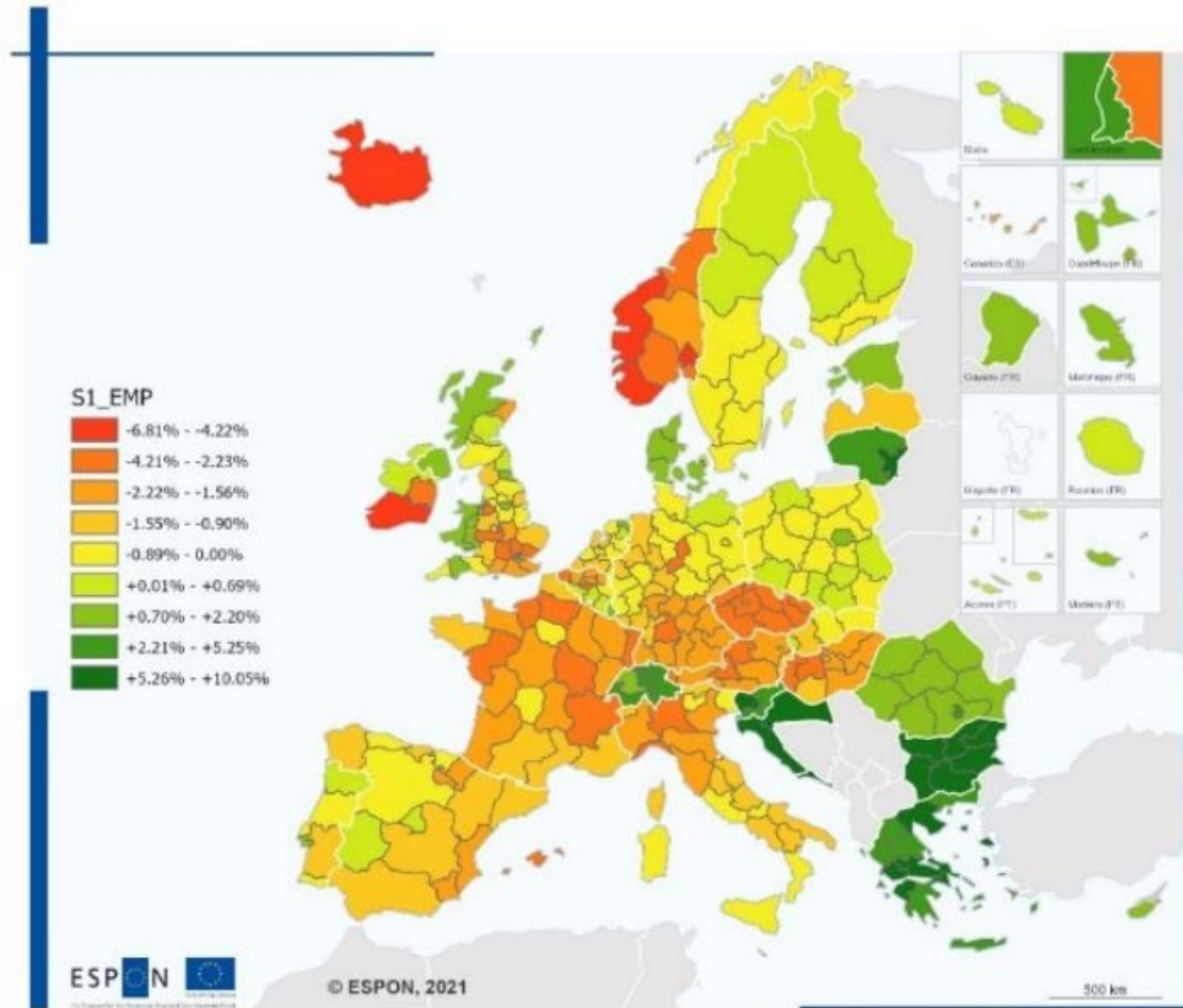
→ ESPON IRiE: Interregional Relations in Europe

<https://www.espon.eu/programme/projects/espon-2020/applied-research/interregional-relations-europe>

KAUBAVOOD



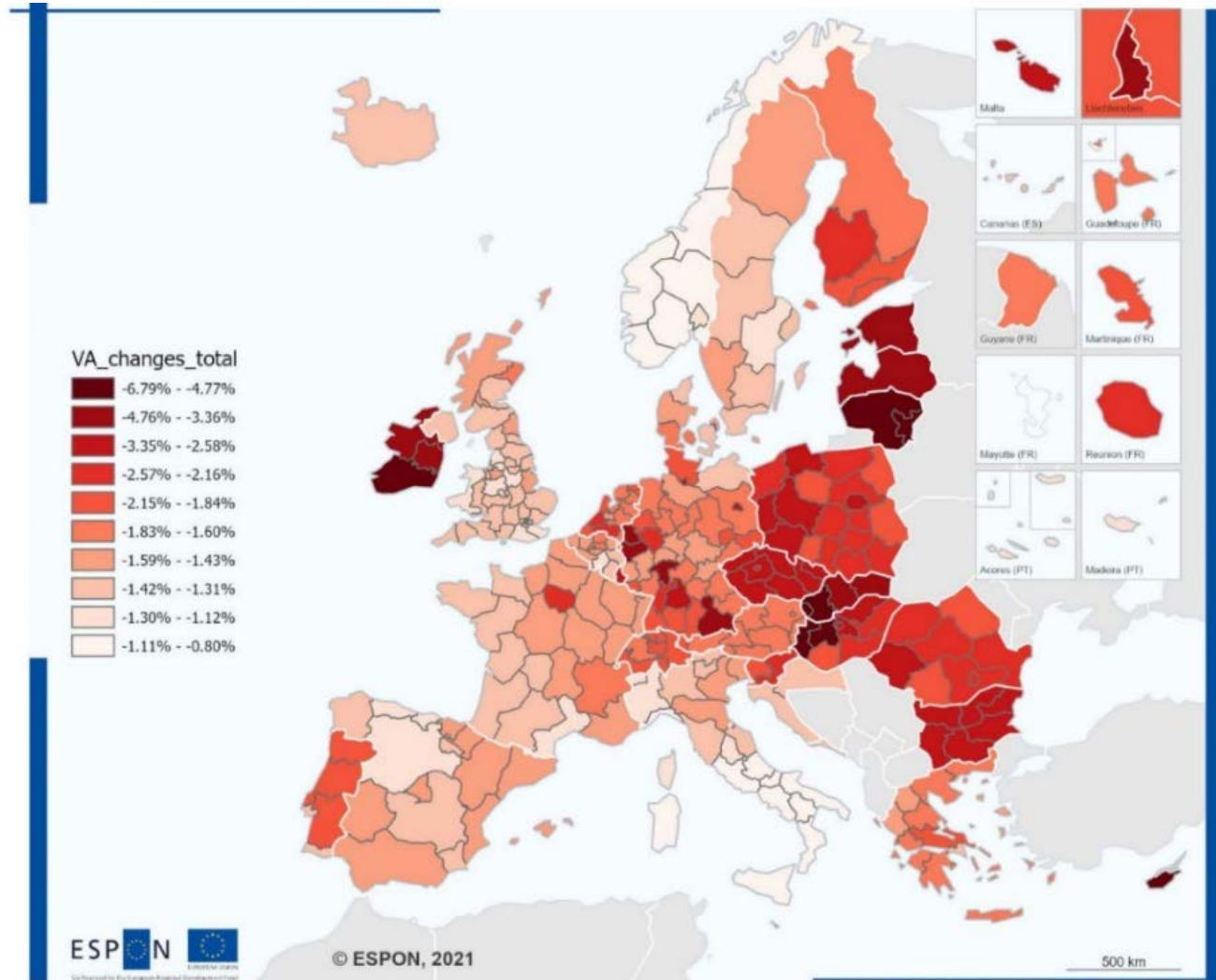
TÖÖHÕIVE MUUTUSE PROGNOOS 2020-2026



→ ESPON IRiE: Interregional Relations in Europe

<https://www.espon.eu/programme/projects/espon-2020/applied-research/interregional-relations-europe>

SÕJA MÕJU SKT-LE



→ ESPON IRiE: Interregional Relations in Europe

<https://www.espon.eu/programme/projects/espon-2020/applied-research/interregional-relations-europe>

Regional level: NUTS 2 (Rev. 2016)
Source: own elaboration based on EUREGIO-2017, 2021
Origin of data: ESPON IRiE project, 2021
© UMS RIATE for administrative boundaries

ESPONILT TEEMASSE

- Targeted Analysis: „Business Development Opportunities at External EU Borders“

<https://www.espon.eu/bus>

- Applied research project: „Interregional relations in Europe“

<https://www.espon.eu/programme/projects/espon-2020/applied-research/interregional-relations-europe>

TULEKUL:

- Targeted Analysis: „Challenges at EU’s North-East External Borders“

<https://www.espon.eu/targeted-analysis-chanebo>

www.espon.eu / espon.ut.ee