

Kuidas on tänane julgeolekuolukord muutnud Eesti piiriregioone?

Ettekanded:

1. **Ülevaade ESPONi uuringutest** – Ingmar Pastak (Tartu Ülikool, ESPONi Eesti kontaktpunkt)
2. **Keskus-tagamaa mõtlemiselt toimerajoonide põhisele planeerimisele** - Erik Gløersen (Spatial Foresight GmbH, ESPON Nostageo)
3. **Paneeldiskussioon**
Moderaator: Garri Raagmaa (Tartu Ülikool, ESPONi Eesti kontaktpunkt)

Paneeldiskussioonis osalejad:

- Hardi Murula (Ida-Virumaa Omavalitsuste Liit)
- Eedi Sepp (ESPONi Seirekomitee, Regionaal- ja põllumajandusministeerium)
- Veiko Sepp (TÜ RAKE)
- Tiit Toots (Võrumaa Omavalitsuste Liit)
- Britt Vahter (Rõuge Vallavalitsus)



PIIRIREGIOONID JA ESPON

Postimees K, 13.03.2024 Ilm Horoskoop

Lõuna-Eesti Postimees Uudised Arvamus Galerii Video Persoon Elu Kuulutused Sport

Tellijale

Lõuna-Eesti Postimees > Arvamus

INTERVJUU } Minister Madis Kallas: nii suurt ebavõrdsust pole Eestis varem olnud (16)

Regionaalminister Madis Kallas kinnitas Võrus antud intervjuus, et maakonnalinnade elujõust sõltub kogu Eesti regionaalareng. — Foto: Arved Breidaks



Arved Breidaks, reporter
9. märts 2024, 00:00

European countries tighten borders

Reuters

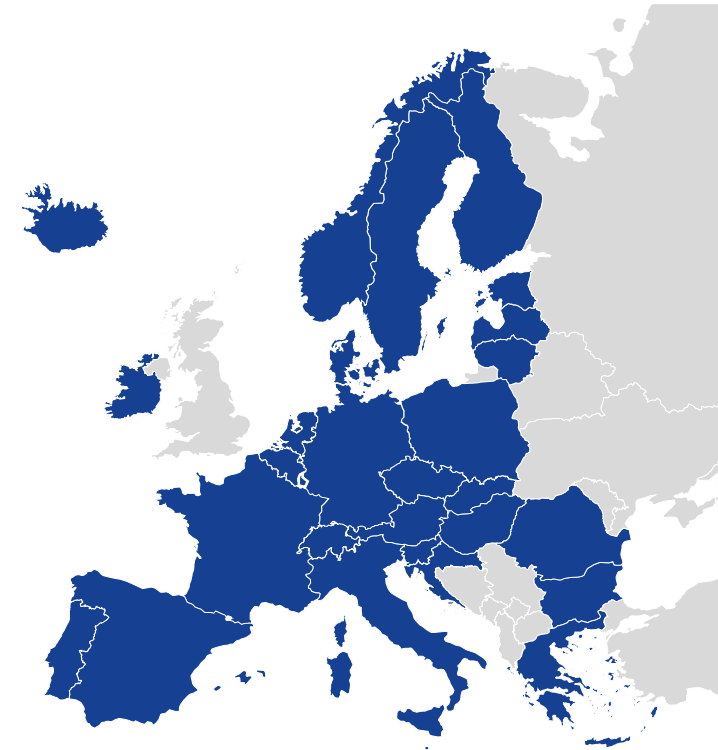
January 11, 2024 4:38 PM GMT+2 · Updated 2 months ago



[1/2] A German federal police Bundespolizei officers stops a vehicle during a patrol along the German-Polish border to prevent illegal migration near Forst, Germany, October 12, 2023. REUTERS/Fabrizio Bensch/File Photo
[Purchase Licensing Rights](#)

PIIRIREGIOONID JA ESPON

- **ESPON** (European Spatial Planning Observatory Network) - Euroopa Territoriaalse koostöö programm
- **Põhitegevus:**
 - regionaaluuringud ja -analüüsid
 - ruumilise planeerimise ja regionaalarenguga tegelevate osapoolte koostöö ja võrgustumise toetamine
 - teavitustegevused



www.espon.eu / espon.ut.ee

KESKUS-TAGAMAA MÕTLEMISELT TOIME- REGIOONIDE PÕHISELE MÕTLEMISELE

Typology of metropolitan areas

Typology of metro regions

- capital metro region
- second-tier metro region
- smaller metro region
- non-metro region
- no data

FUA & MEGA classification*

- MEGA
- capital city
- second-tier city
- transnational/national FUA
- regional/local FUA

*FUA: Functional Urban Area
MEGA: Metropolitan European Growth Area

Regional level: NUTS 3 (2006)
Source: ESPON CU Typology Compilation, 2011
Origin of data: DG Regio, 2011
© UMS RIATE for administrative boundaries

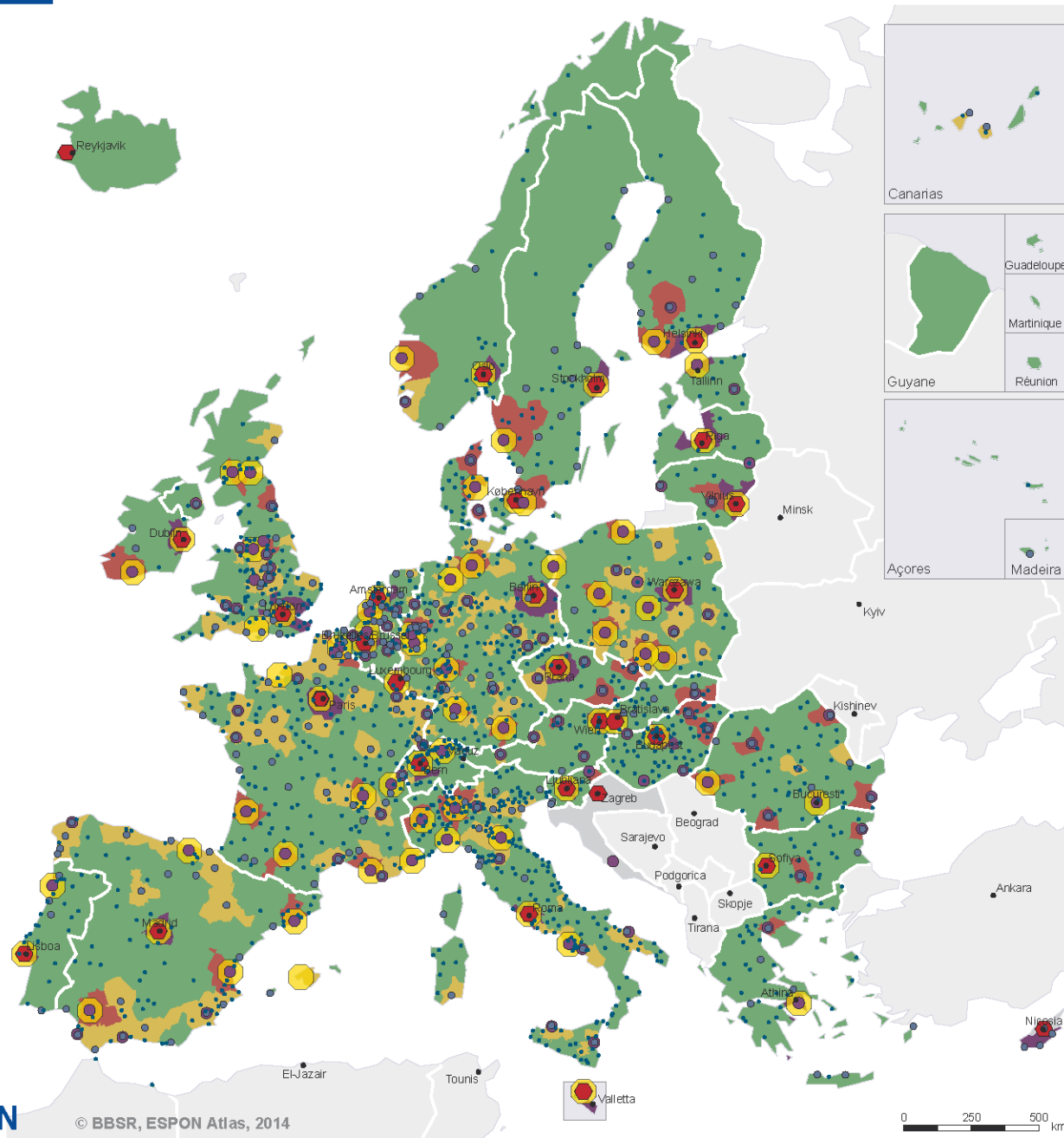
This map does not necessarily reflect the opinion of the ESPON Monitoring Committee



© BBSR, ESPON Atlas, 2014



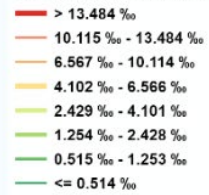
EUROPEAN UNION
Part-financed by the European Regional Development Fund
INVESTING IN YOUR FUTURE



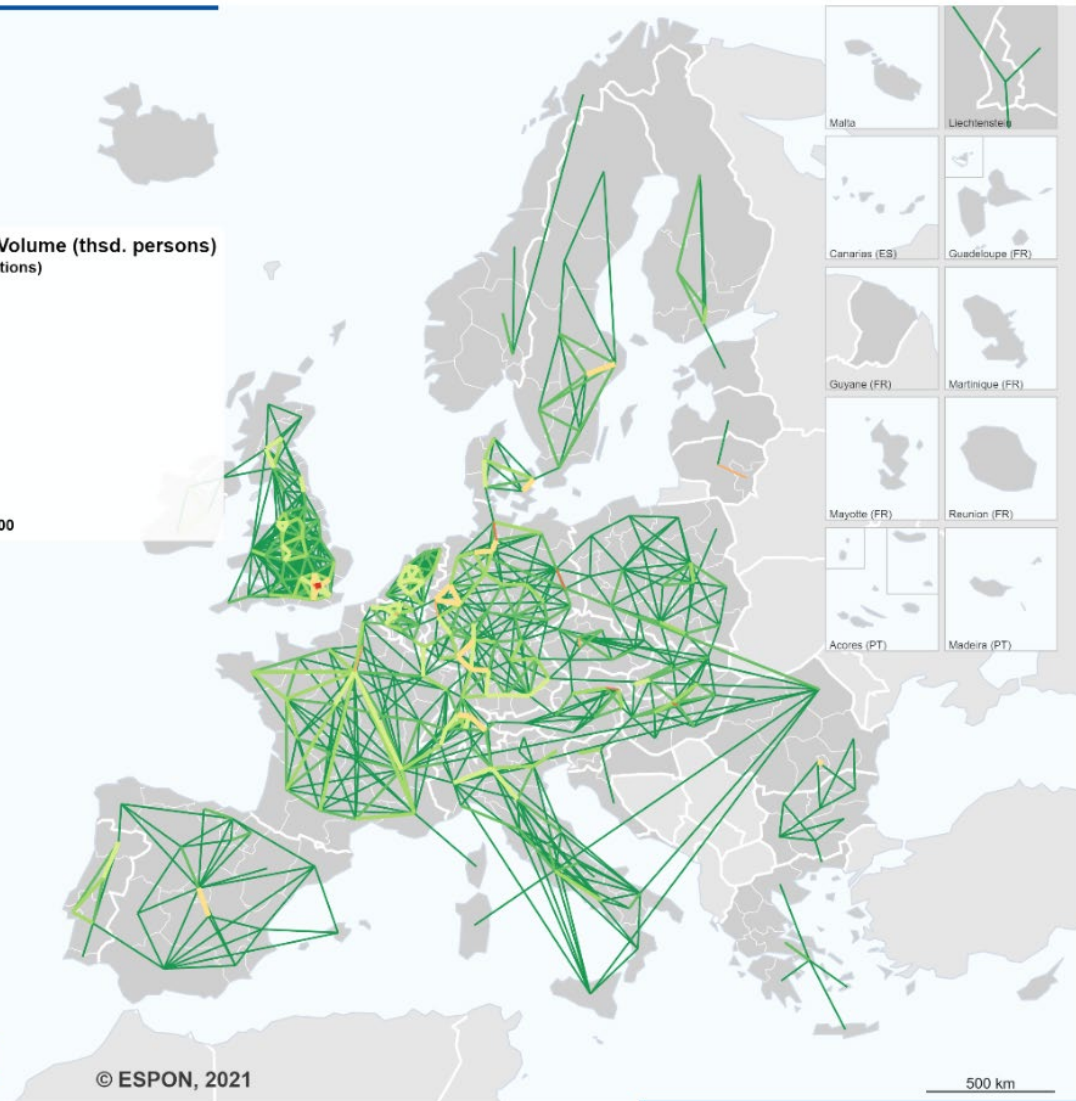
PENDELRÄNNE

Commuters, 2018

Permil of Total Flow Volume (thsd. persons)
(Aggregation of both directions)



Data displayed:
Percentiles from 0.82 to 1.00



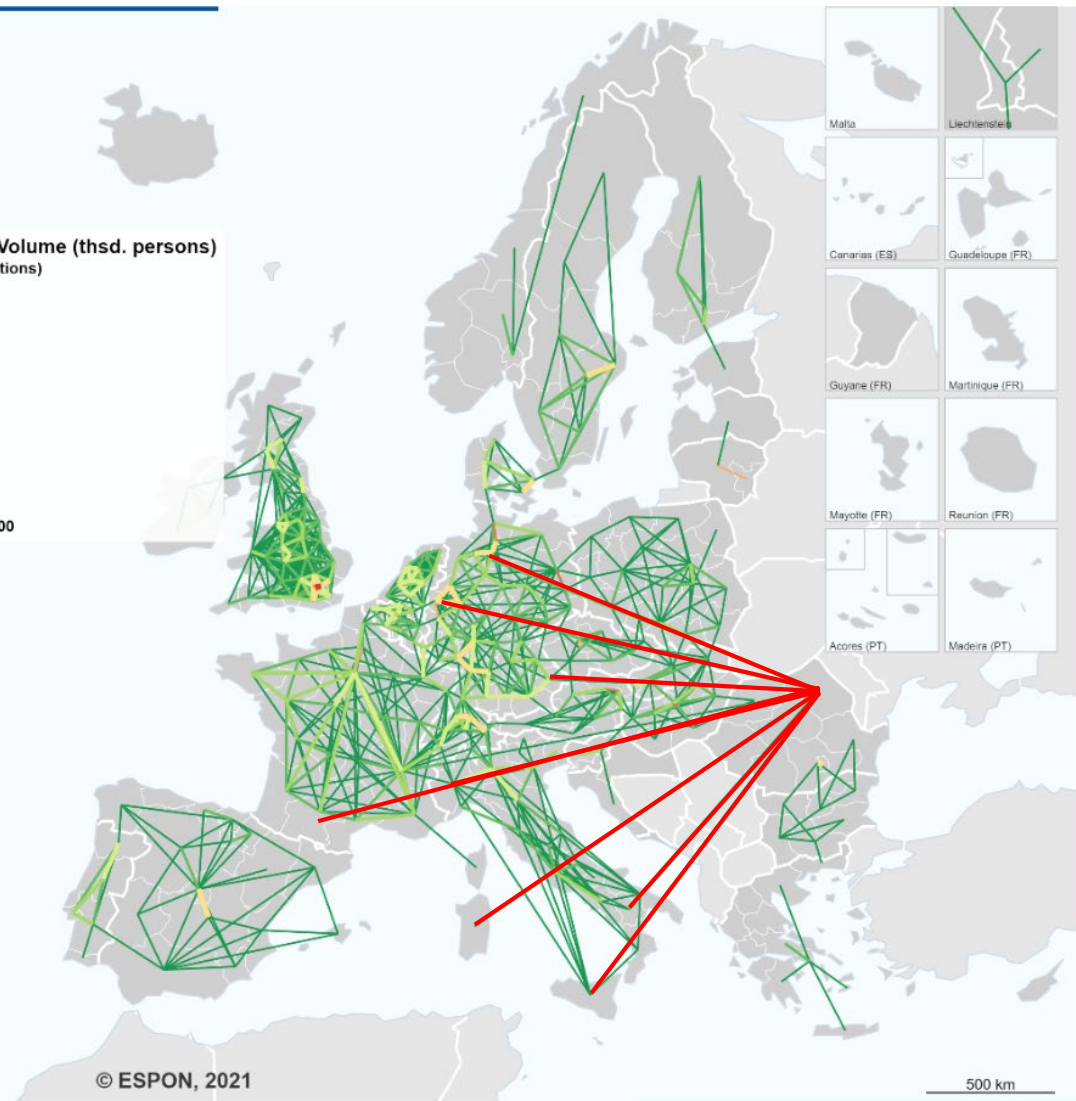
PENDELRÄNNE

Commuters, 2018

Permil of Total Flow Volume (thsd. persons) (Aggregation of both directions)

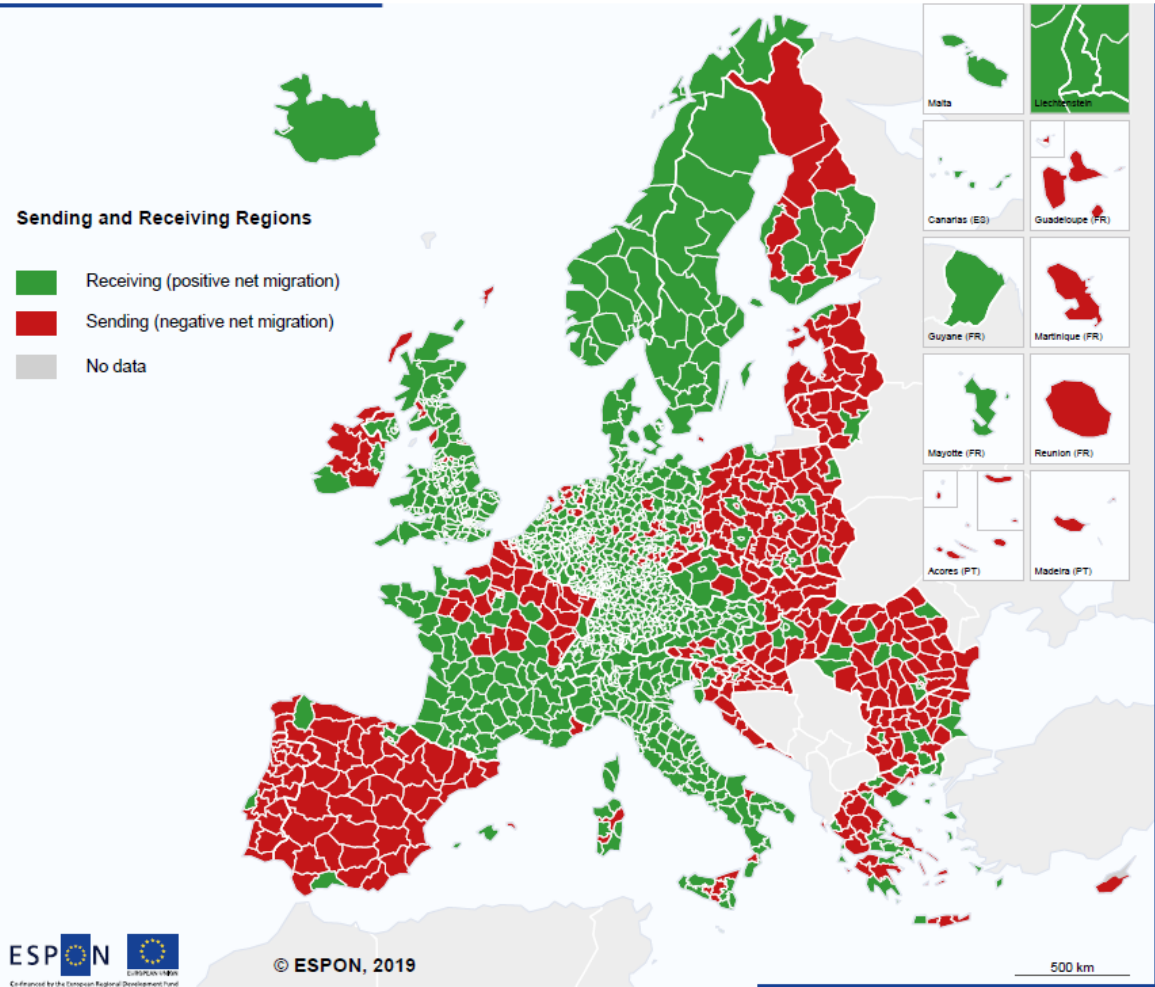


Data displayed:
Percentiles from 0.82 to 1.00

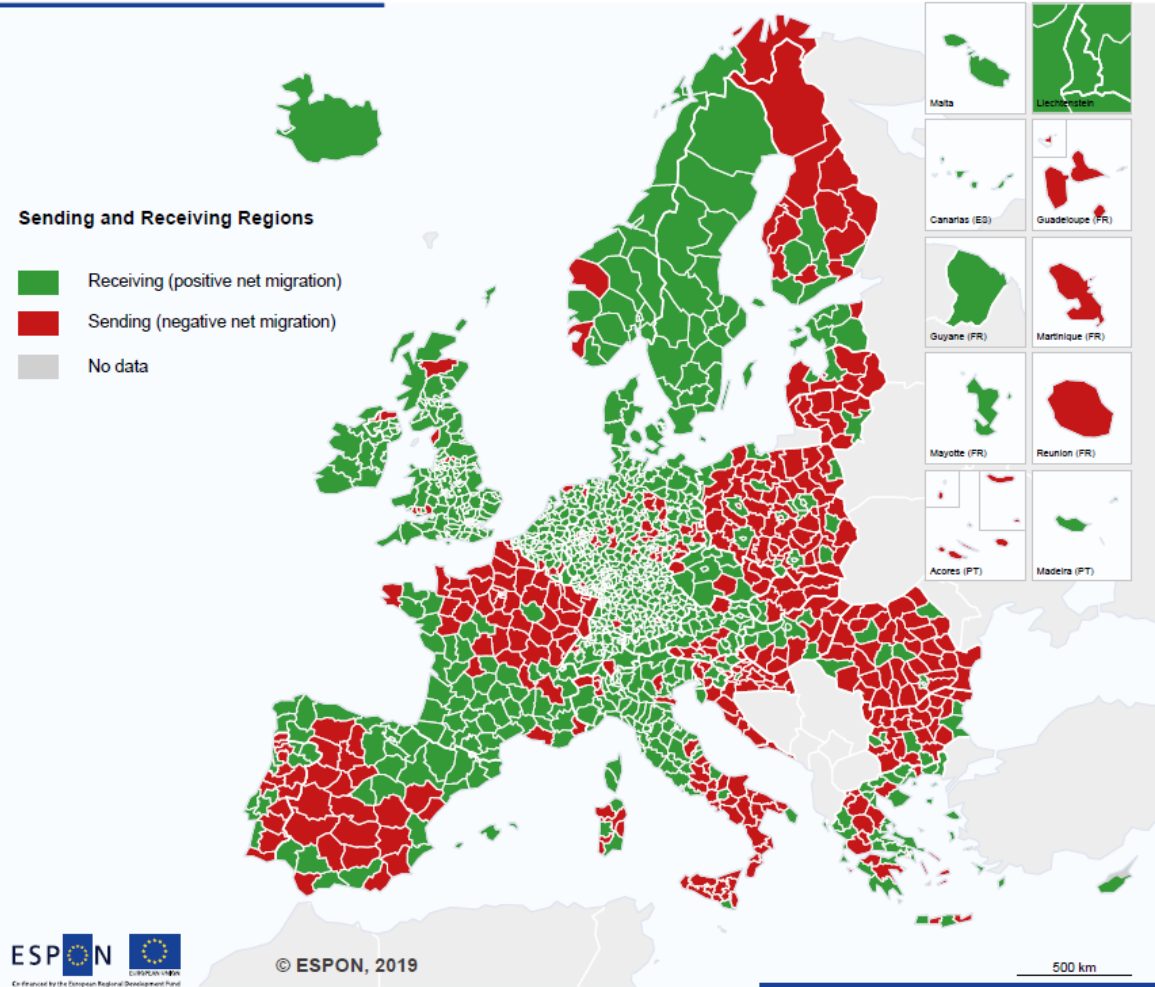


RÄNDEPÖÖRE

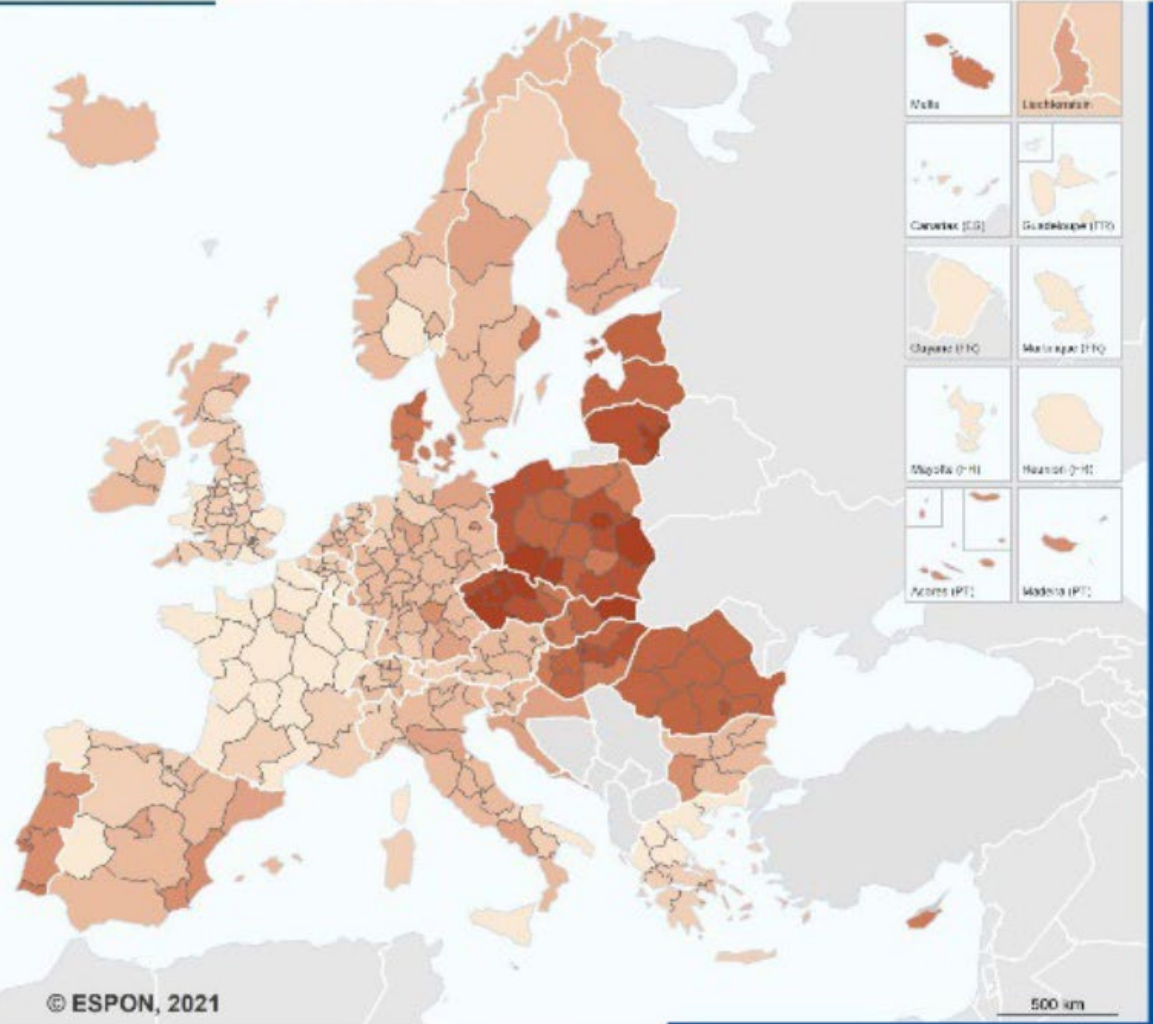
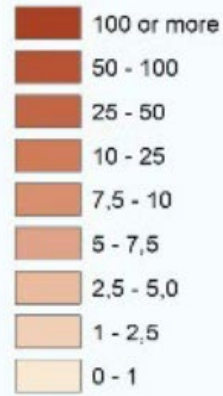
In- and out-migration, 2012-2016



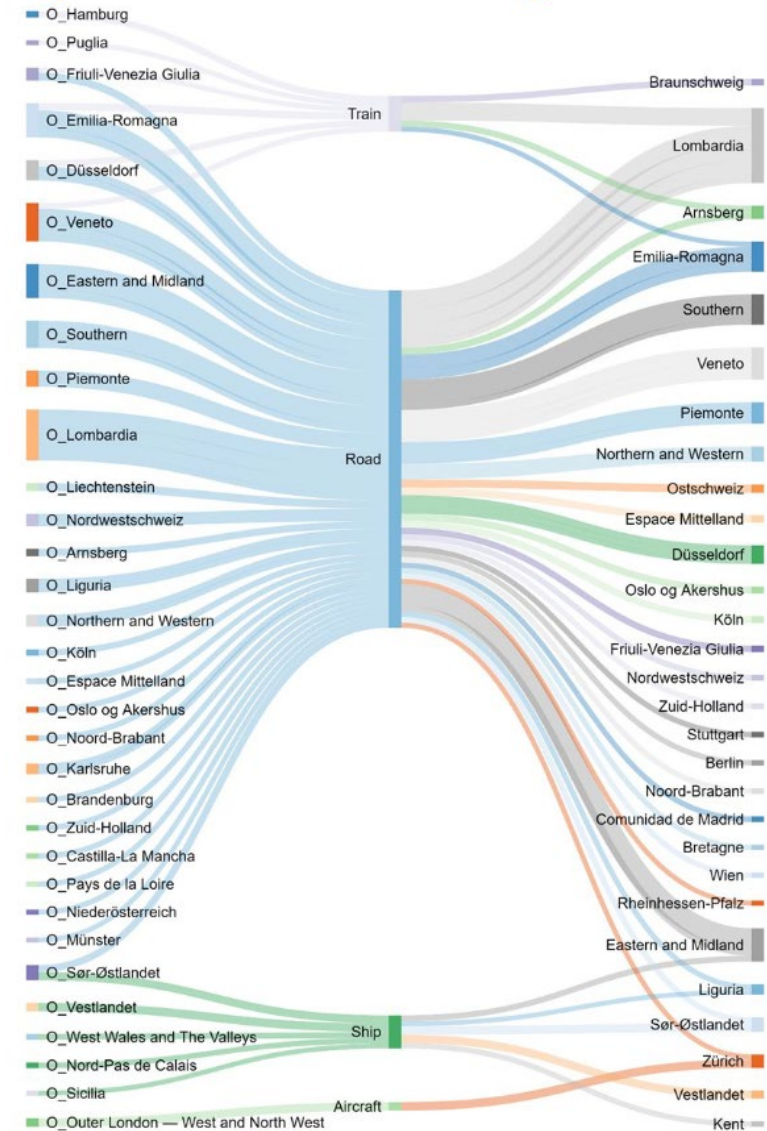
In- and out-migration, 2017



Ukrainians - inflow to regions per 1 000 inhabitants, scenario D



Top-50 inter-regional flows by transport mode. ROW and Intra-regional excluded. Average 2010-2018. % over €.



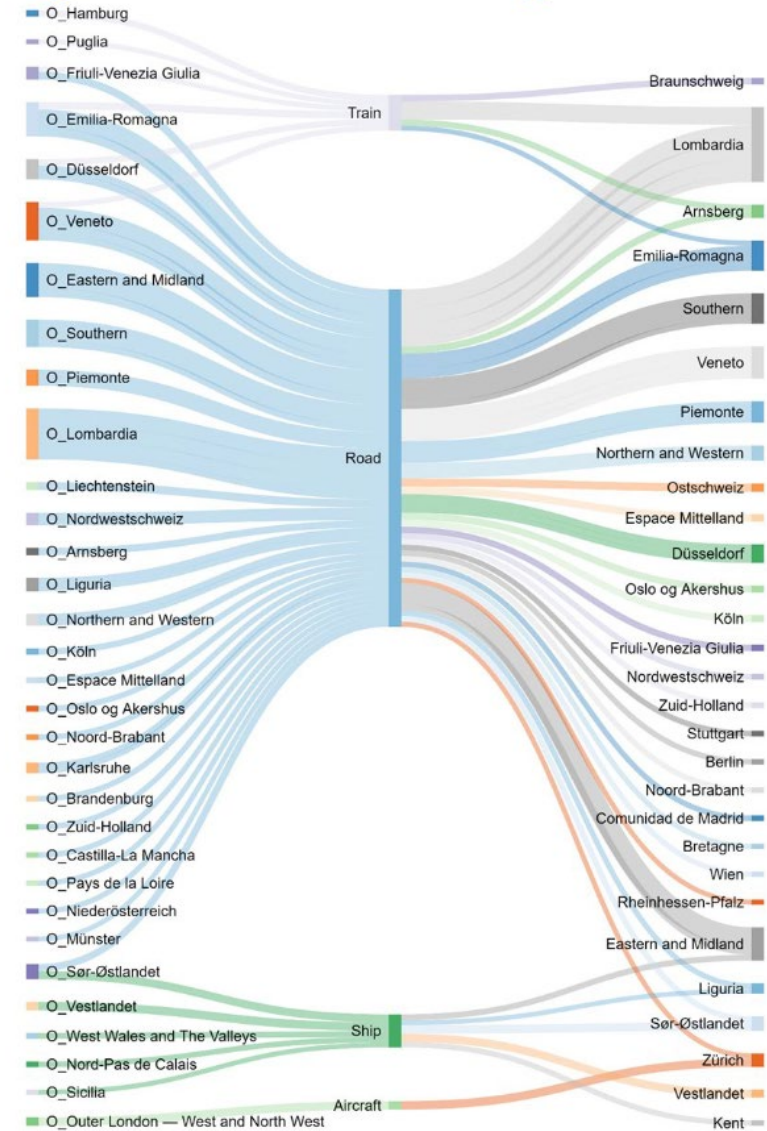
→ ESPON IRiE: Interregional Relations in Europe

<https://www.espon.eu/programme/projects/espon-2020/applied-research/interregional-relations-europe>

KAUBAVOOD



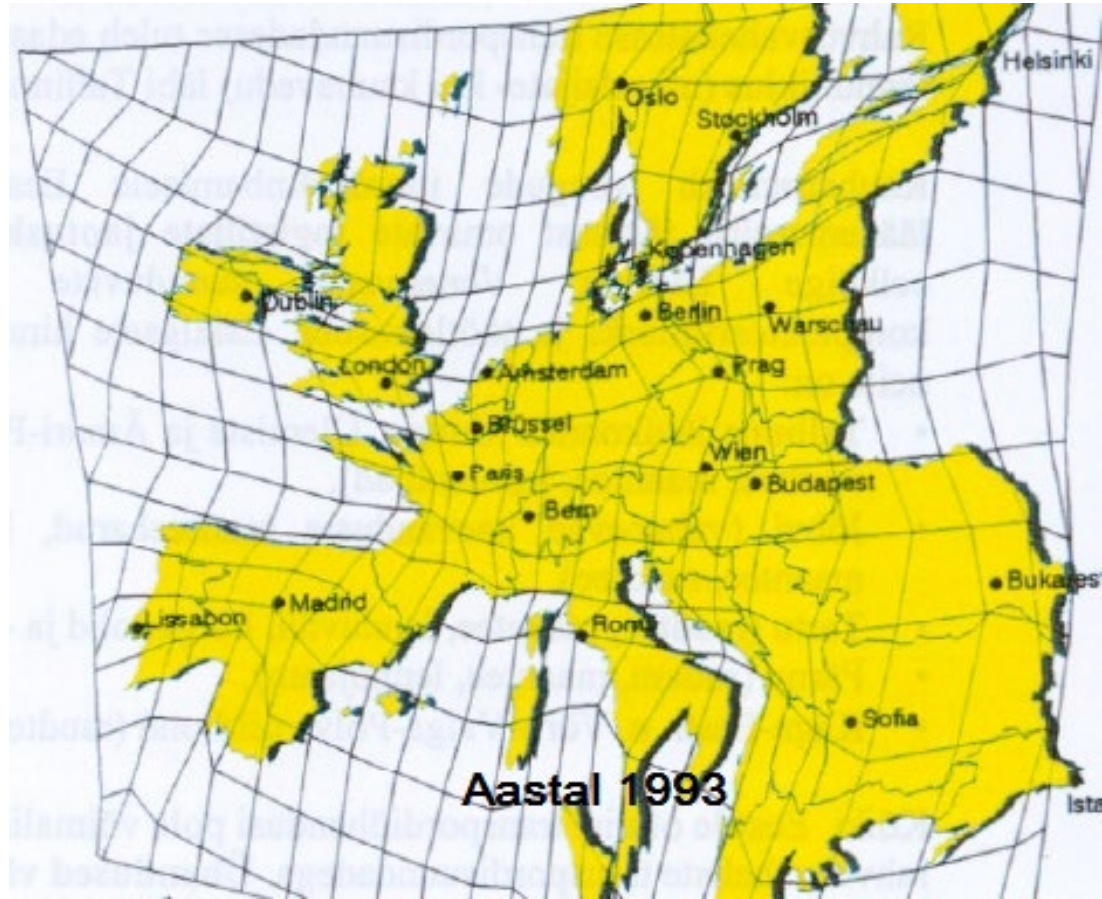
Top-50 inter-regional flows by transport mode. ROW and Intra-regional excluded. Average 2010-2018. % over €.



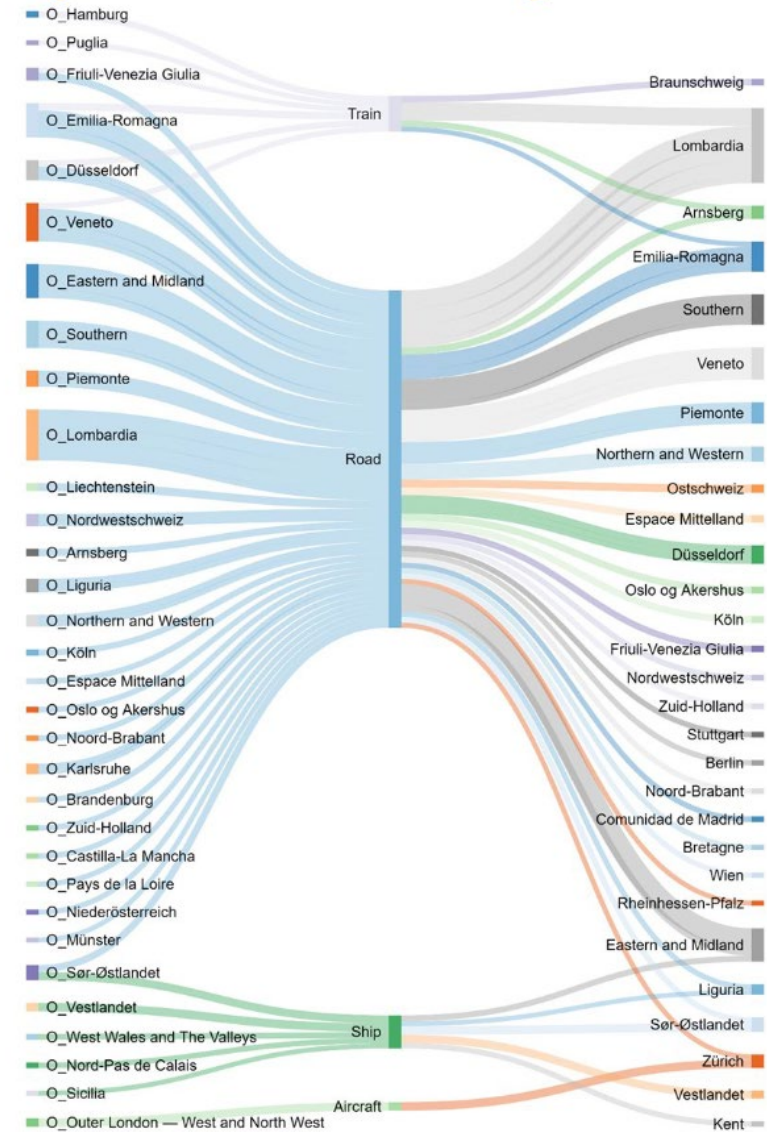
→ ESPON IRiE: Interregional Relations in Europe

<https://www.espon.eu/programme/projects/espon-2020/applied-research/interregional-relations-europe>

KAUBAVOOD



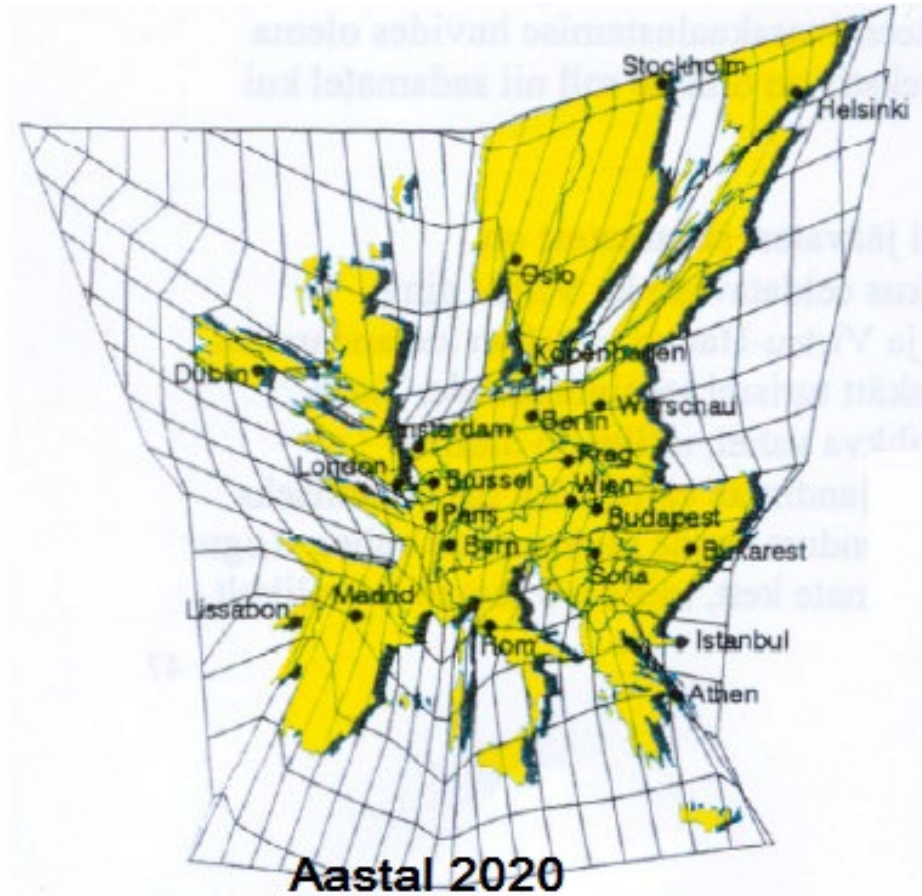
Top-50 inter-regional flows by transport mode. ROW and Intra-regional excluded. Average 2010-2018. % over €.



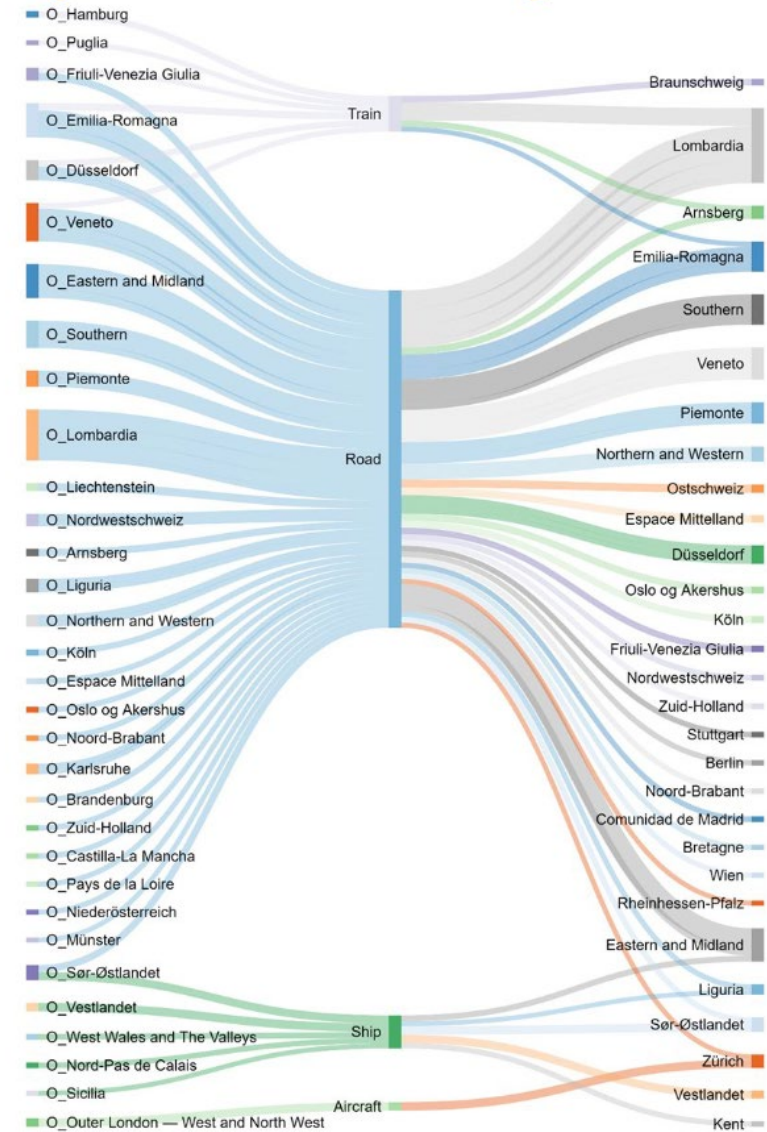
→ ESPON IRiE: Interregional Relations in Europe

<https://www.espon.eu/programme/projects/espon-2020/applied-research/interregional-relations-europe>

KAUBAVOOD



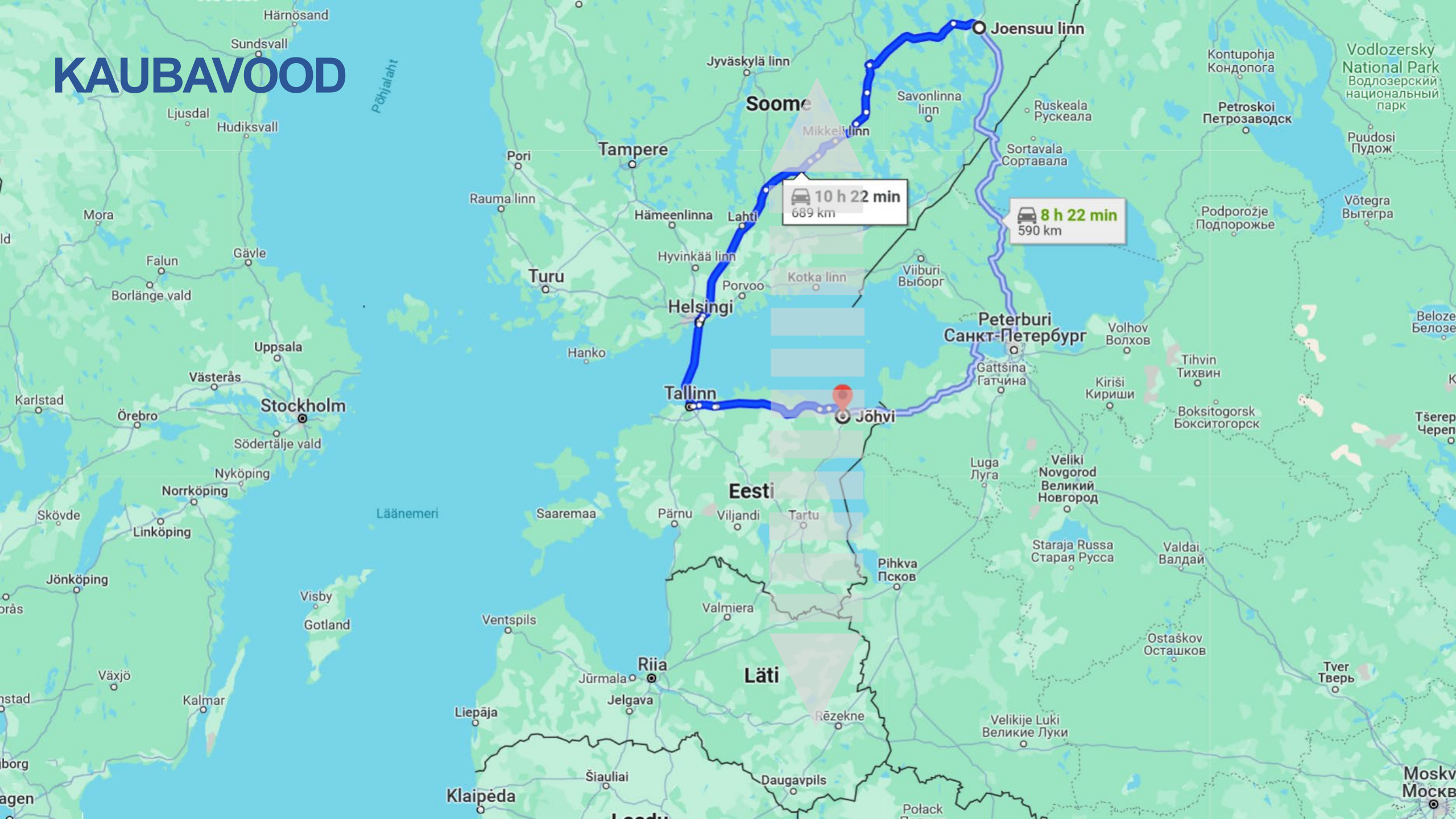
Top-50 inter-regional flows by transport mode. ROW and Intra-regional excluded. Average 2010-2018. % over €.



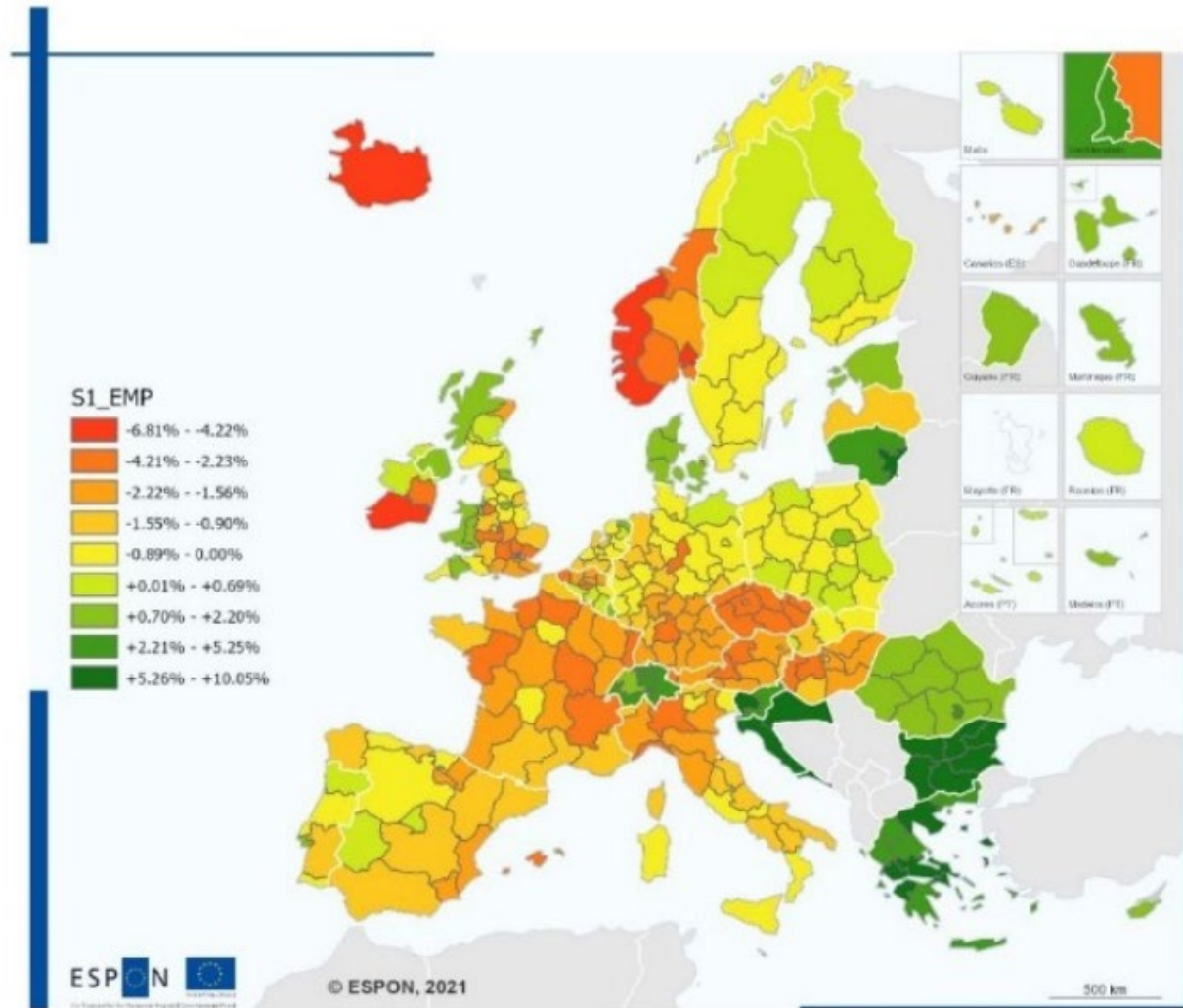
→ ESPON IRiE: Interregional Relations in Europe

<https://www.espon.eu/programme/projects/espon-2020/applied-research/interregional-relations-europe>

KAUBAVOOD



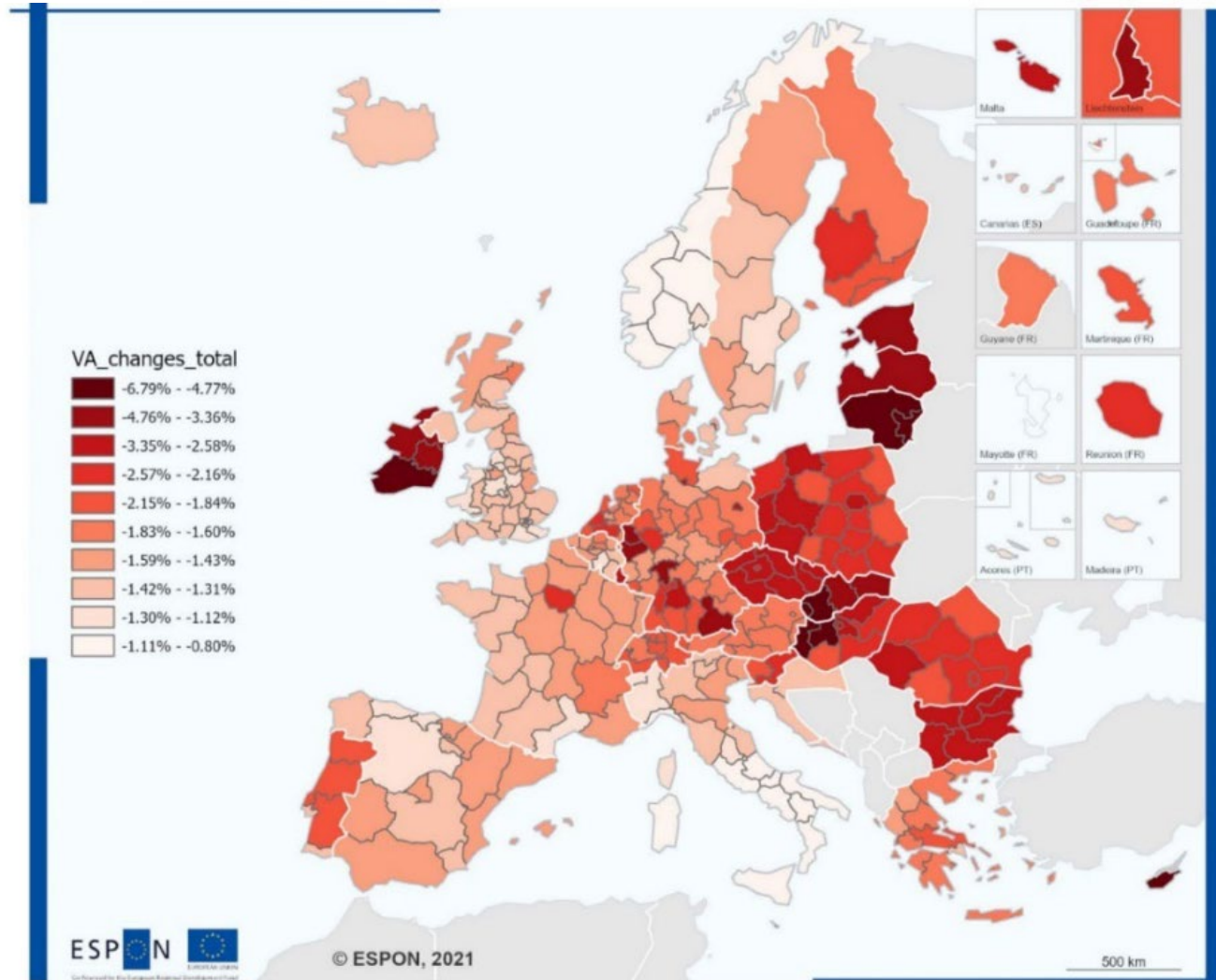
TÖÖHÕIVE MUUTUSE PROGNOOS 2020-2026



→ ESPON IRiE: Interregional Relations in Europe

<https://www.espon.eu/programme/projects/espon-2020/applied-research/interregional-relations-europe>

SÕJA MÕJU SKT-LE



→ ESPON IRiE: Interregional Relations in Europe

<https://www.espon.eu/programme/projects/espon-2020/applied-research/interregional-relations-europe>

ESPONILT TEEMASSE

- Targeted Analysis: „Business Development Opportunities at External EU Borders“

<https://www.espon.eu/bus>

- Applied research project: „Interregional relations in Europe“

<https://www.espon.eu/programme/projects/espon-2020/applied-research/interregional-relations-europe>

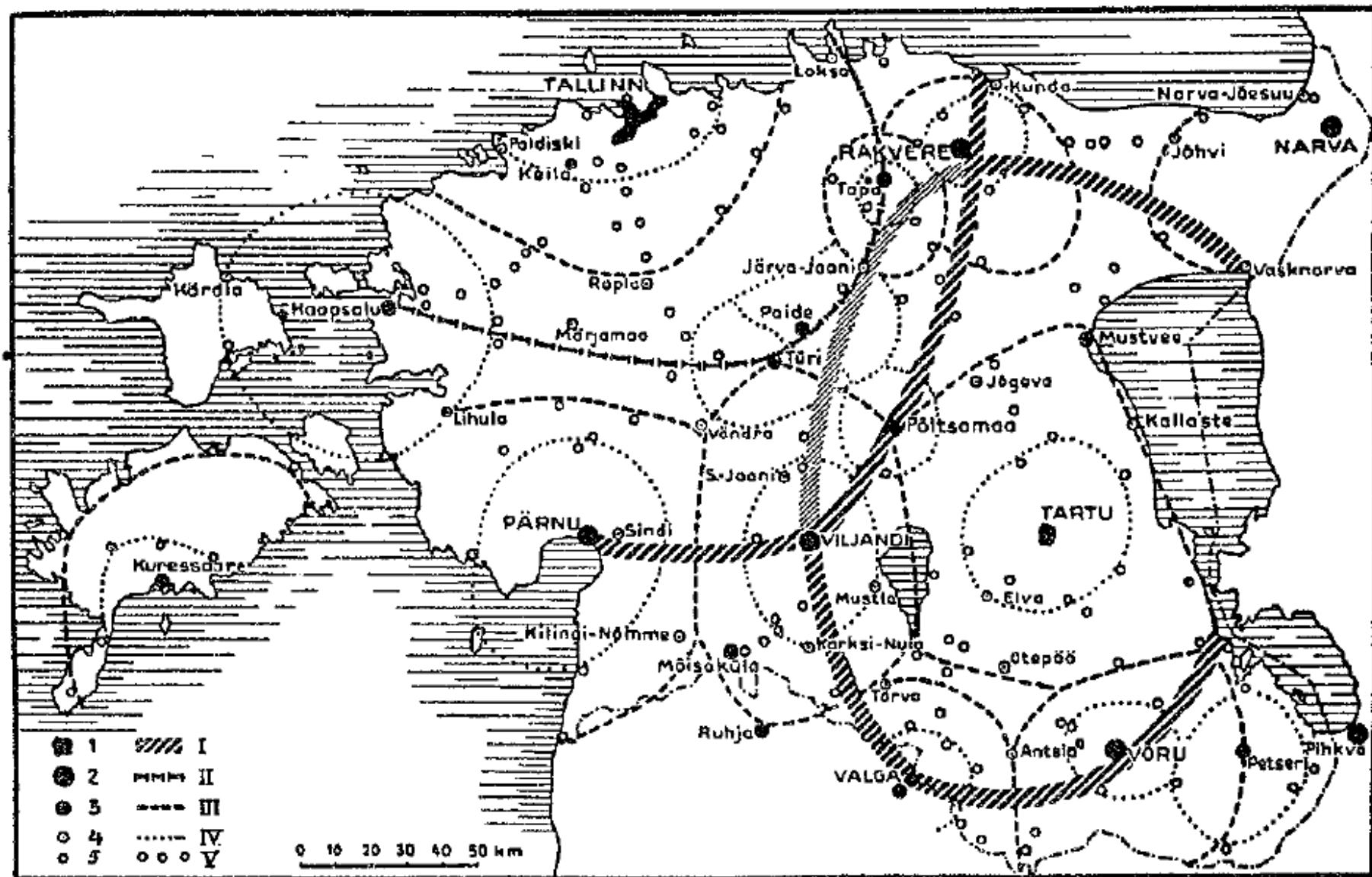
TULEKUL:

- Targeted Analysis: „Challenges at EU’s North-East External Borders“

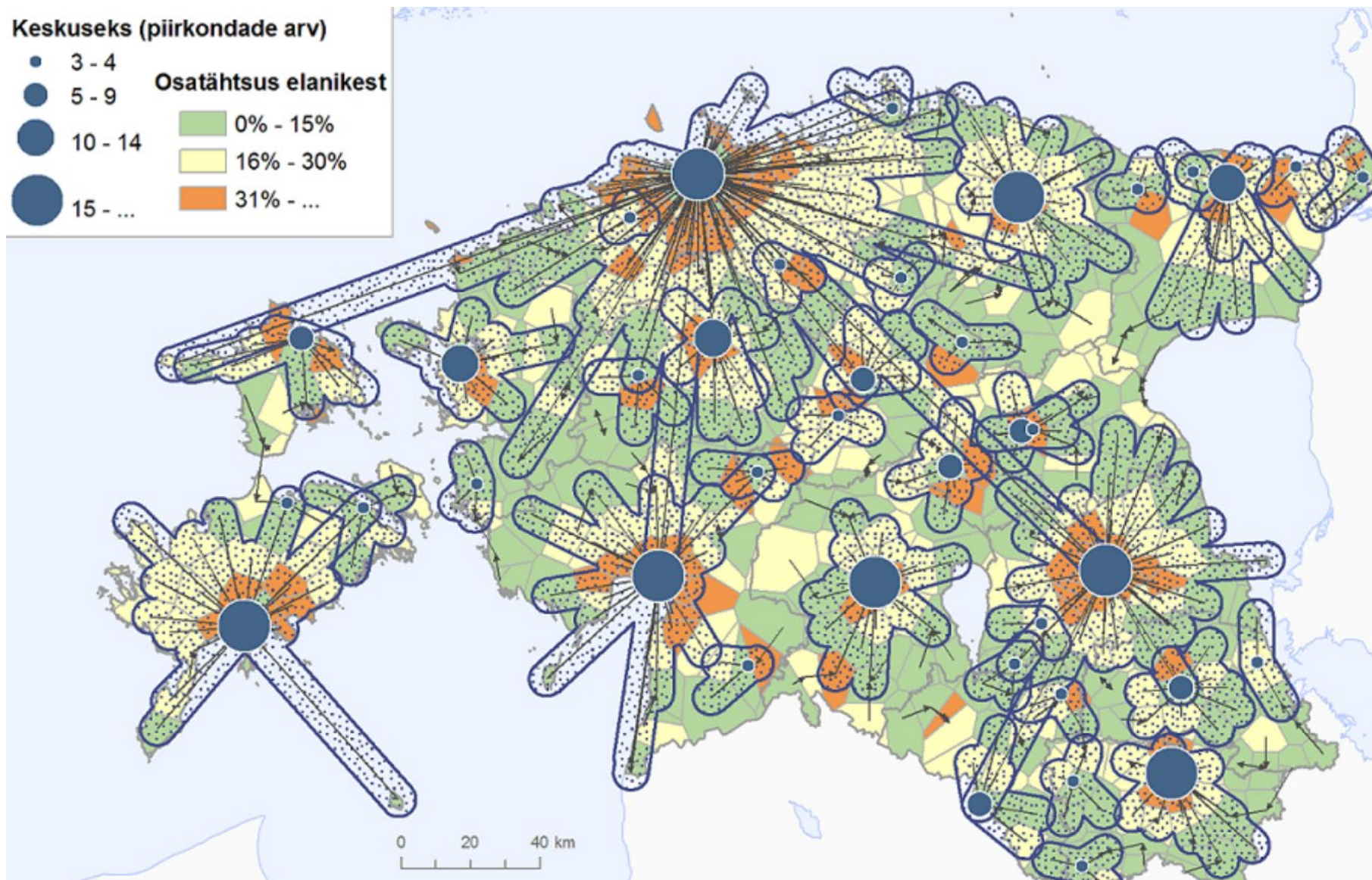
<https://www.espon.eu/targeted-analysis-chanebo>

www.espon.eu / espon.ut.ee

TOIMEPIIRKONNAD 1930



TOIMEPIIRKONNAD 2013



TOIMEPIIRKONNAD 2021

Tööränne ja toimepiirkonnad (REL 2021)

