

PANEELELAMUPIIRKONDADE ARENGUD TALLINNA LINNA NÄITEL



Anneli Kährik, Kadri Leetmaa, Kadi Mägi,
Karin Kangur

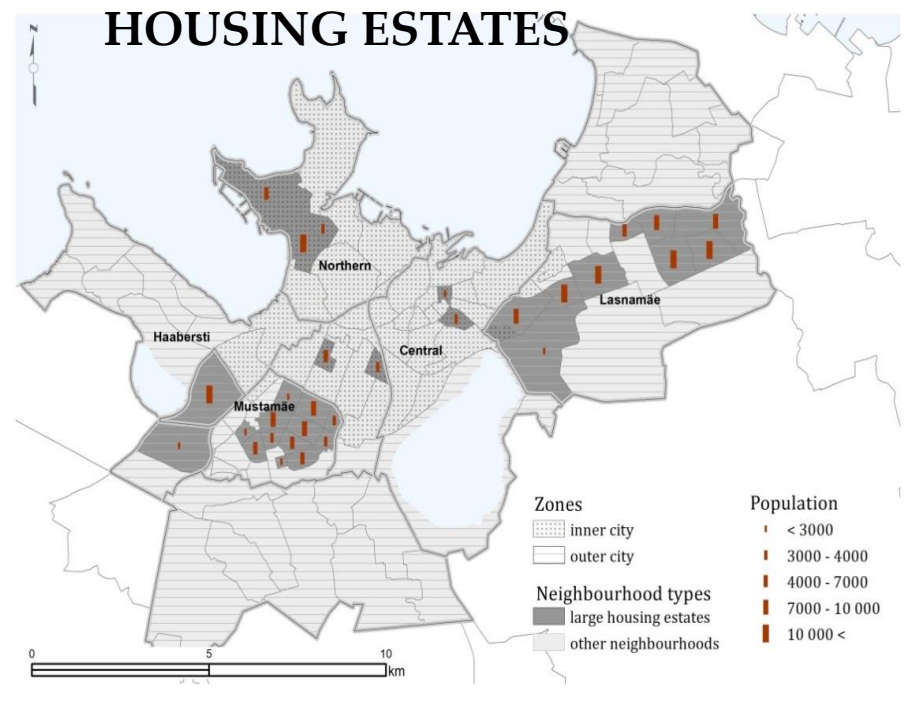
Rände- ja Linnauuringute Keskus CMUS, Tartu Ülikool

PLANEERIMISKONVERENTS 2018

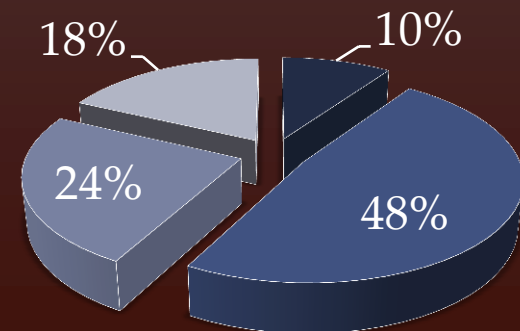
1. Millised on sotsiaalsed, etnilised ja demograafilised muutused Tallinna paneelelamupiirkondades?
2. Kuidas mõjutab paneelelamupiirkondade arengut ränne?

58% tallinlastest elab
paneel lamupiirkondades

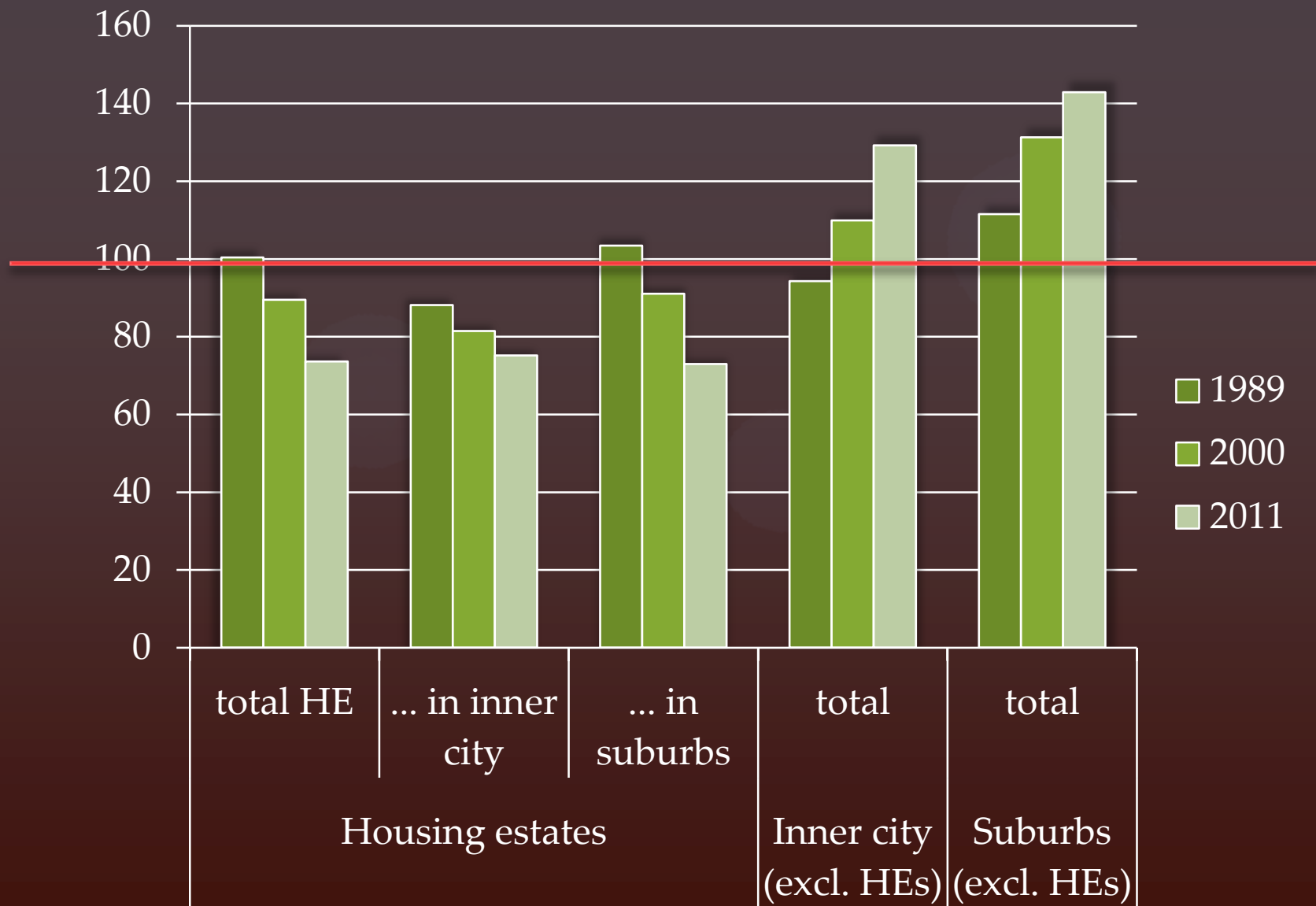
Vene keelsed elanikud 60%
(kogu linnas 45%),
Keskmine vanus 42 aastat

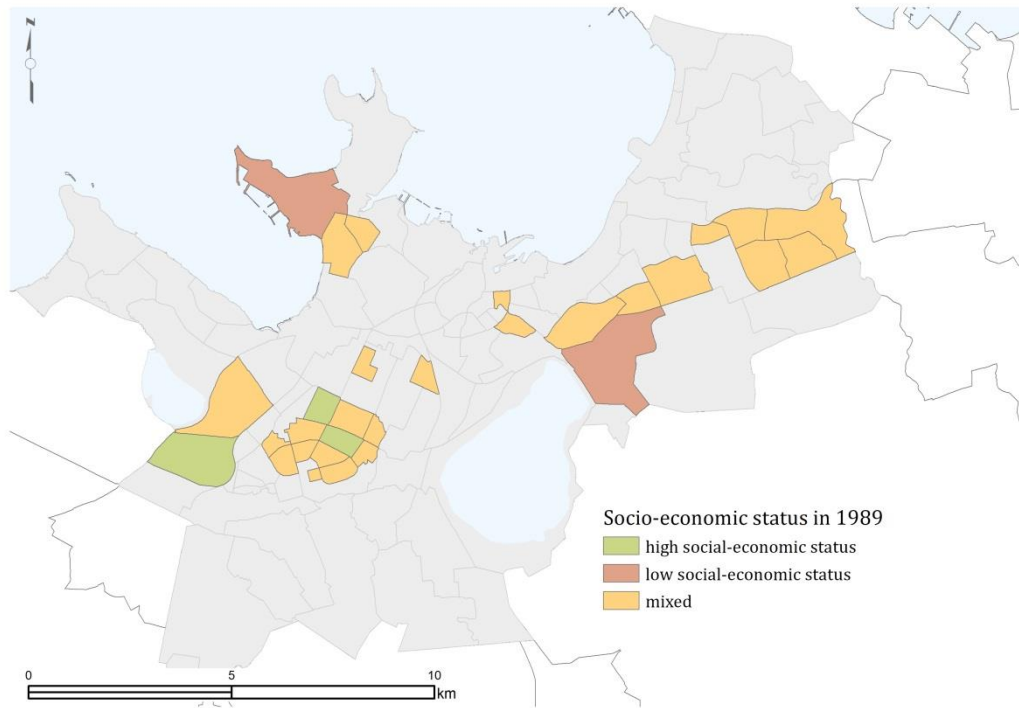


- Inner city housing estates
- Outer city housing estates
- Inner city
- Suburb



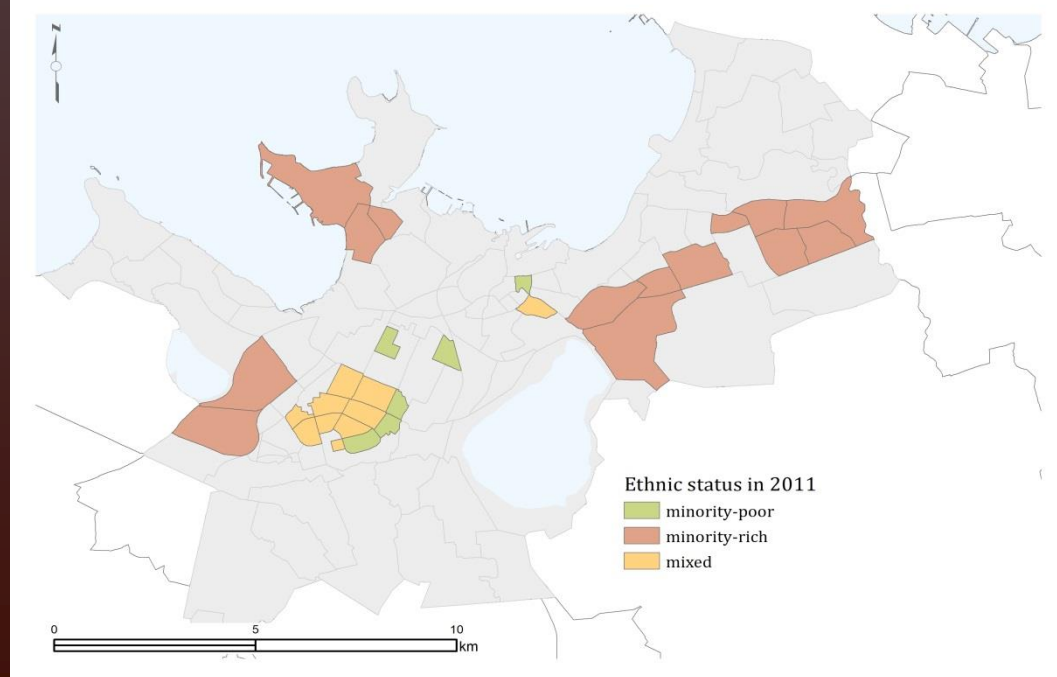
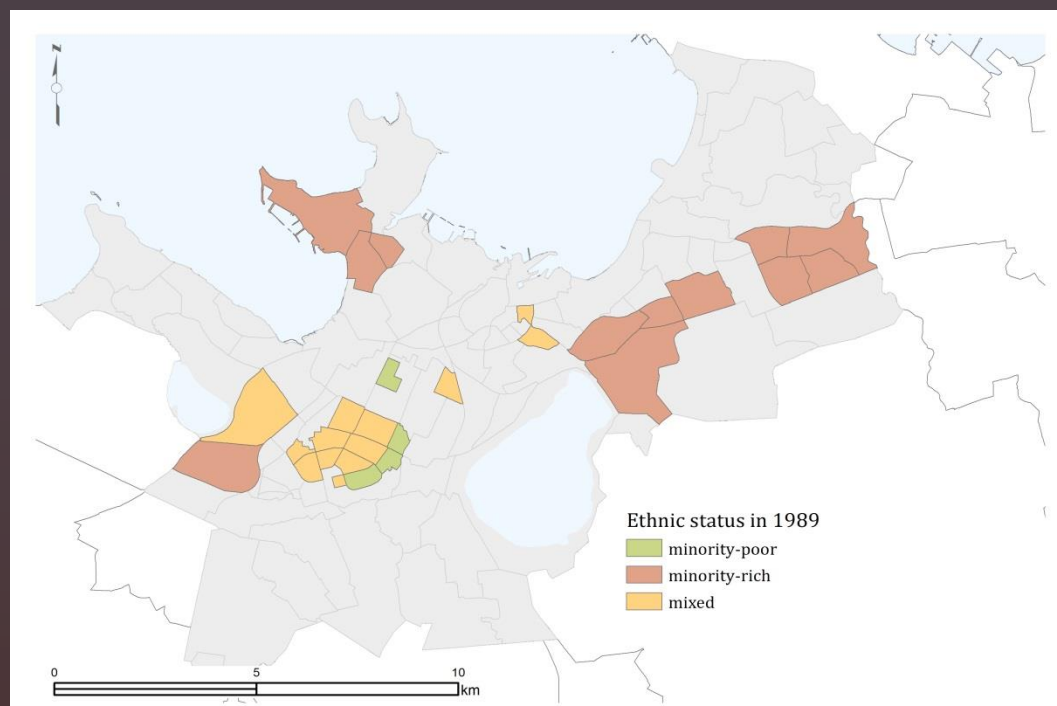
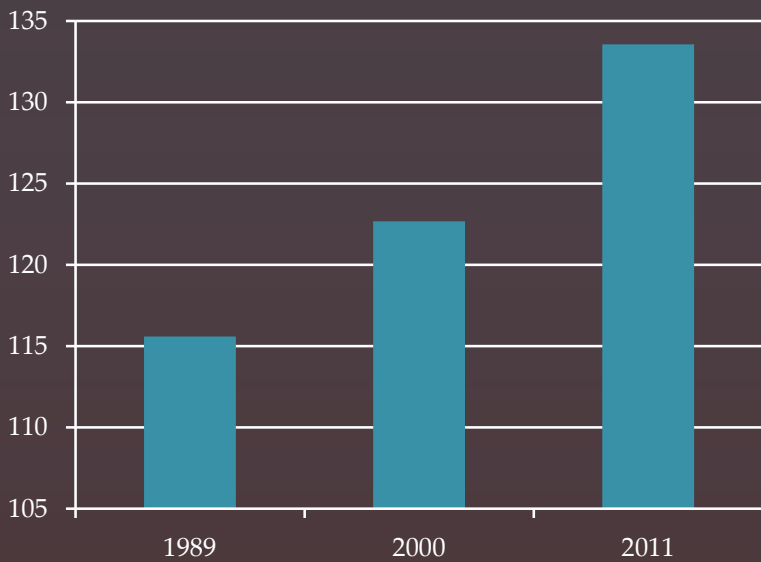
Kõrgema sotsiaalse staatusega elanike osakaal on pidevalt vähenemas, eriti äärelinna paneelpiirkondades





Äärelinna
paneelrajoonid
jõukust kaotamas,
siselinn mõnevõrra
stabiilsem

võrdlus 1989 ja 2011



Kasvav populaarsus
eelkõige venekeelse
elanikkonna hulgas
võrdlus 1989 ja 2011

Vaesemad

Vene k

Eesti k

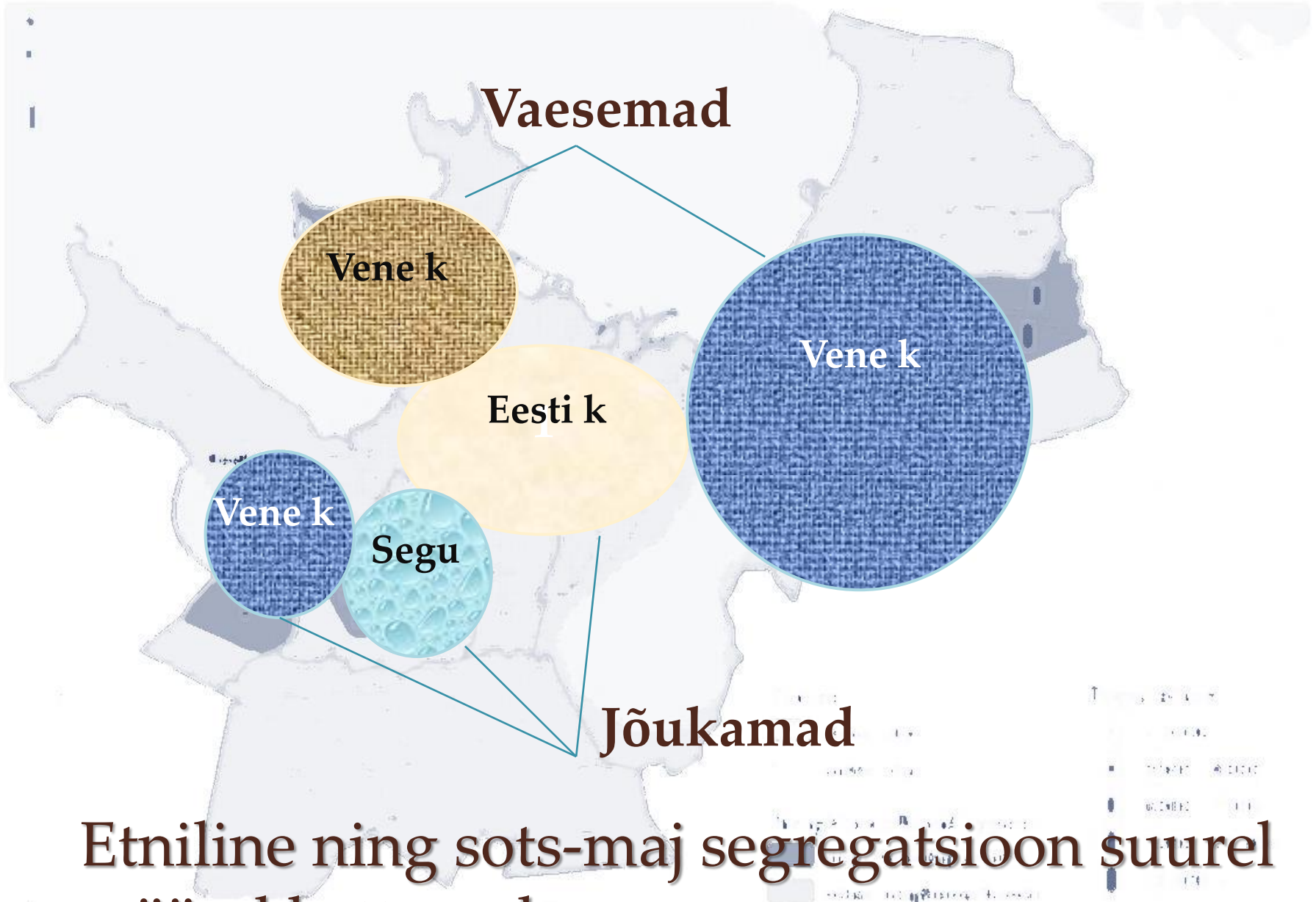
Vene k

Vene k

Segu

Jõukamad

Etniline ning sots-maj segregatsioon suurel määral kattuvad

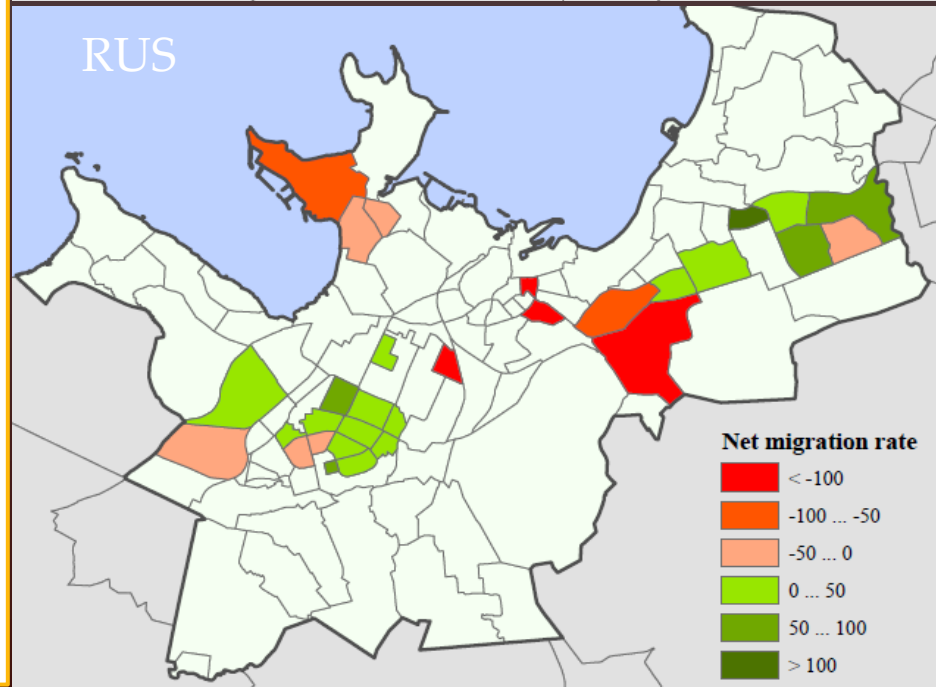
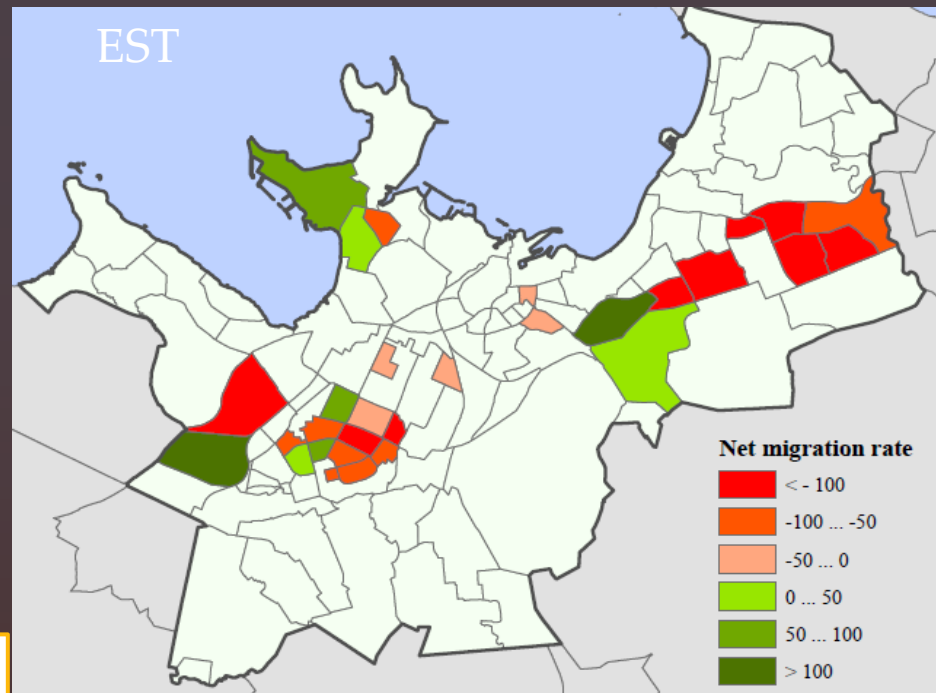


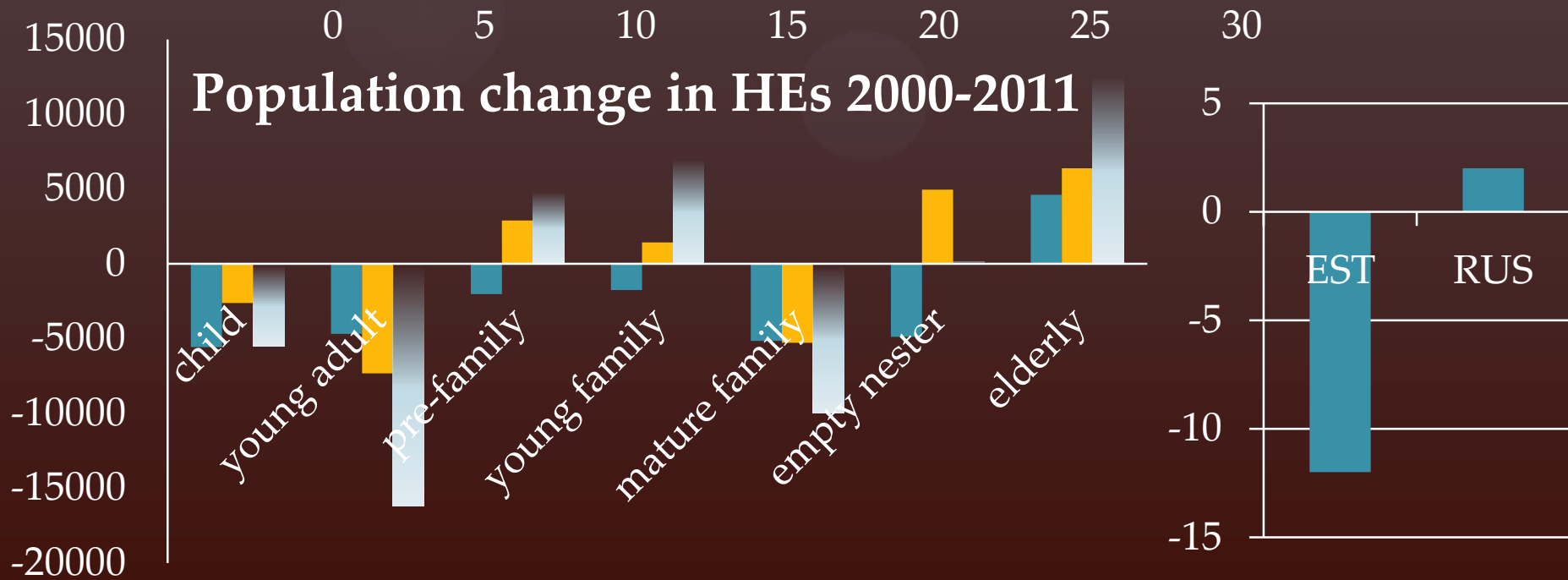
Mis on rände ja demograafia roll
(etnilise) segregatsiooni kujunemisel?

Rändesaldo 2000-2010

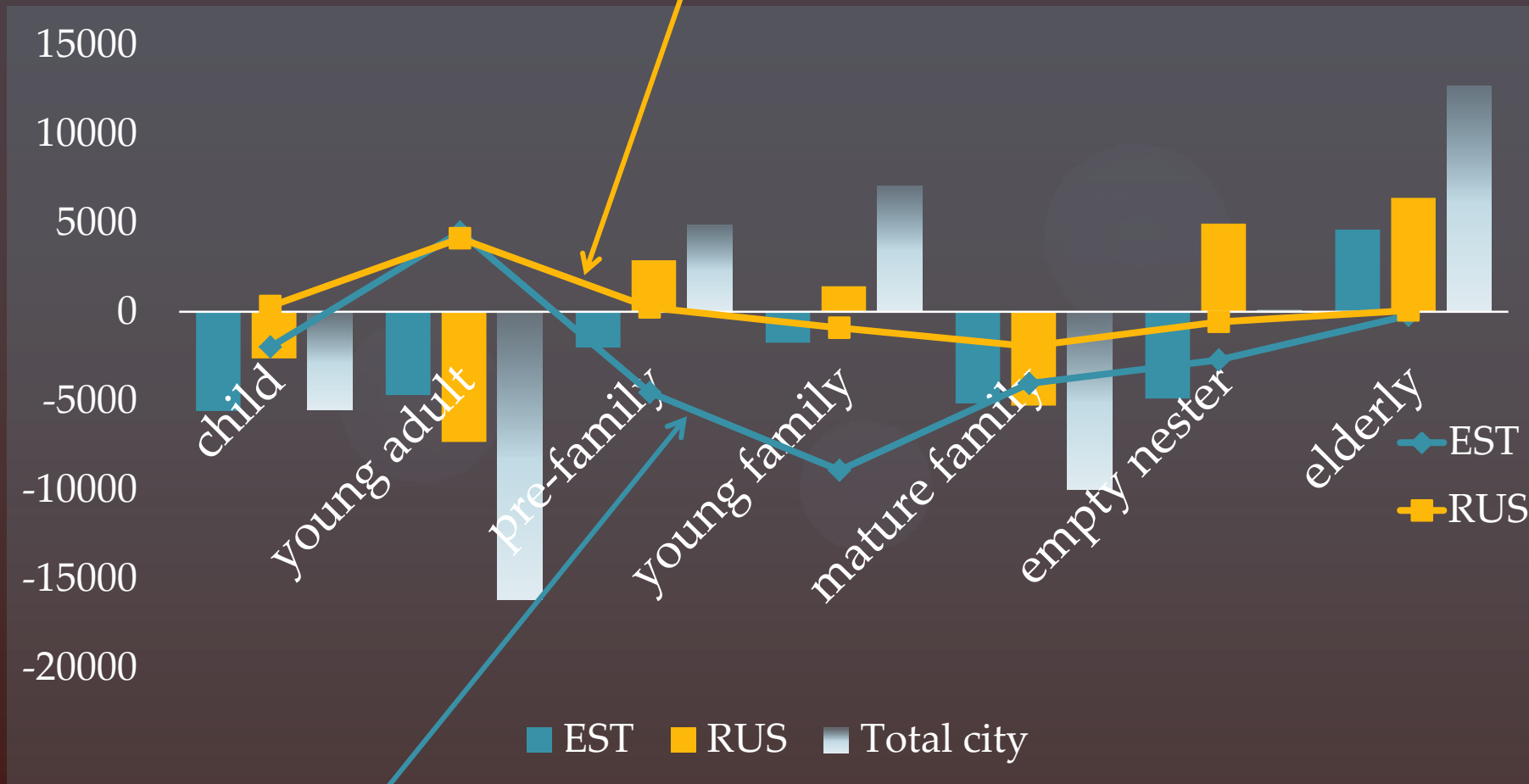
Eestlased liiguvad
pigem siselinna;

Vene keelsed elanikud
äärelinna
paneelikatesse

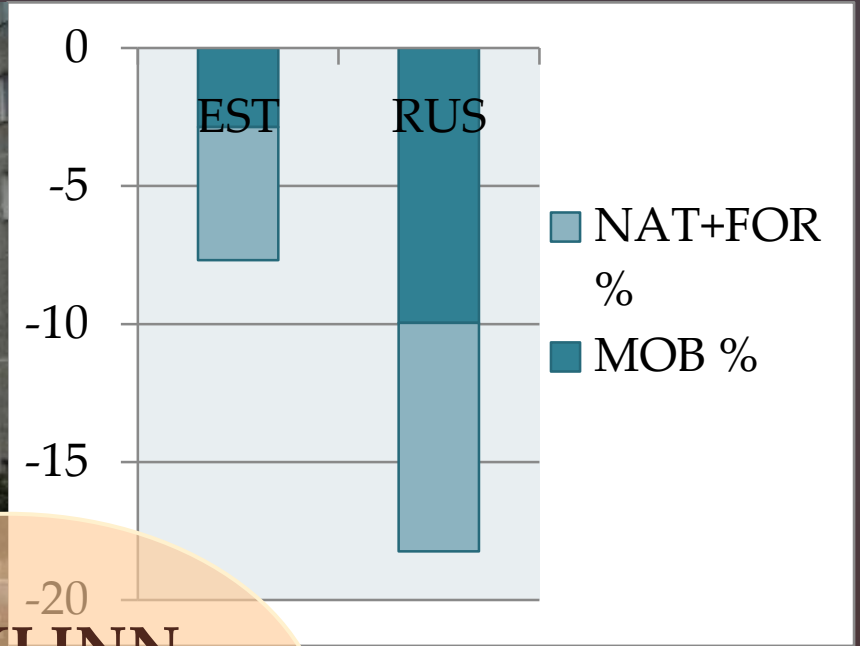




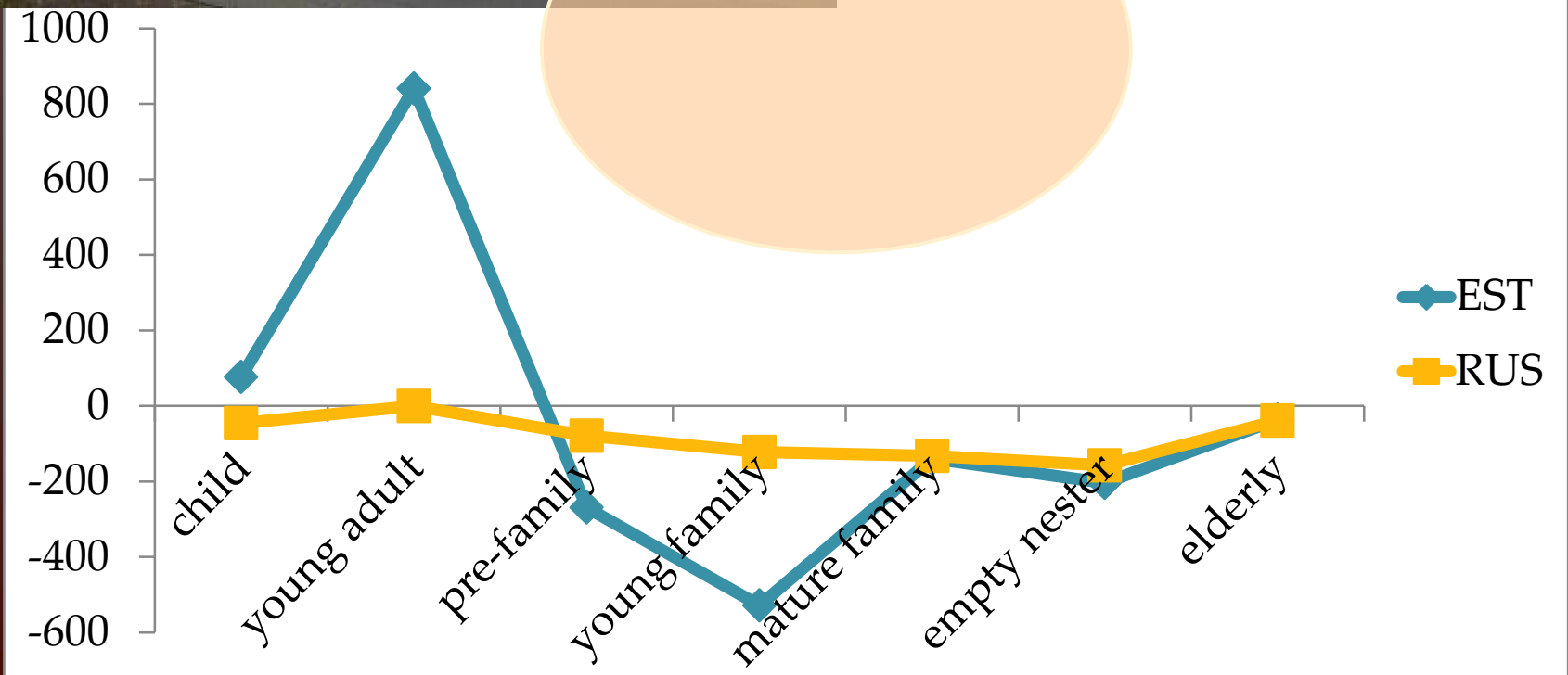
Vene keelsed – ränne vanusrühmade lõikes suhteliselt stabiilne

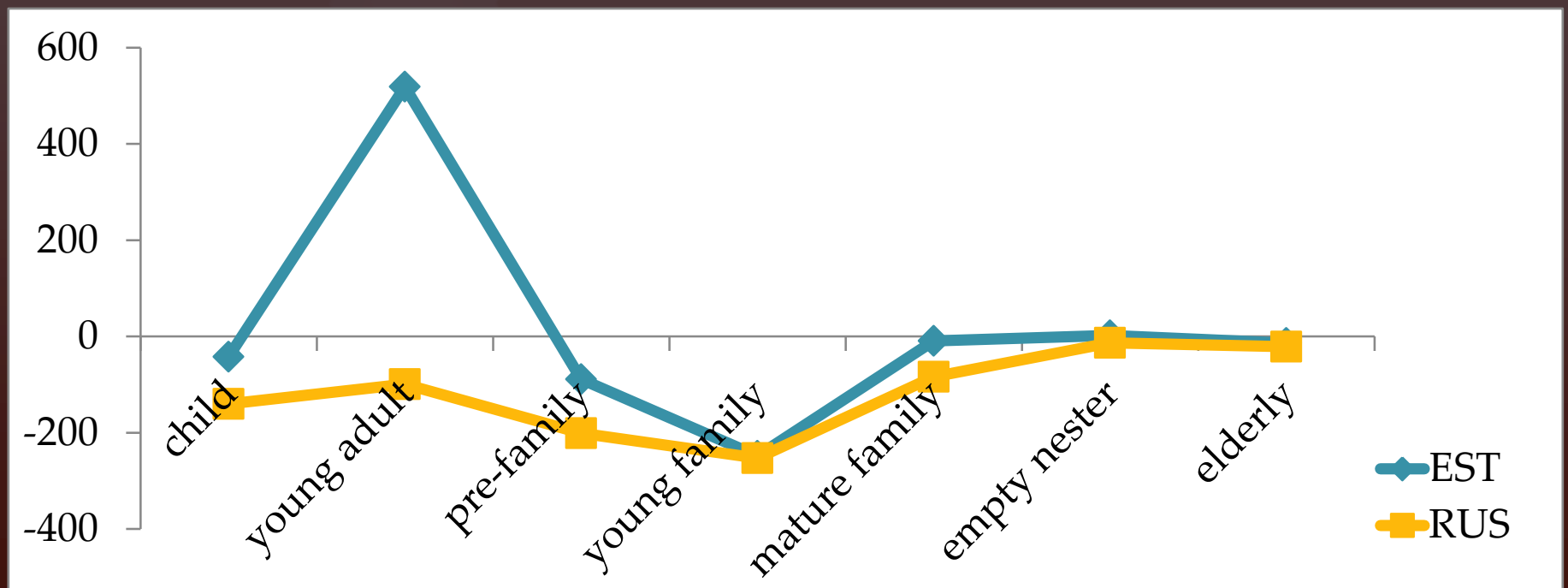
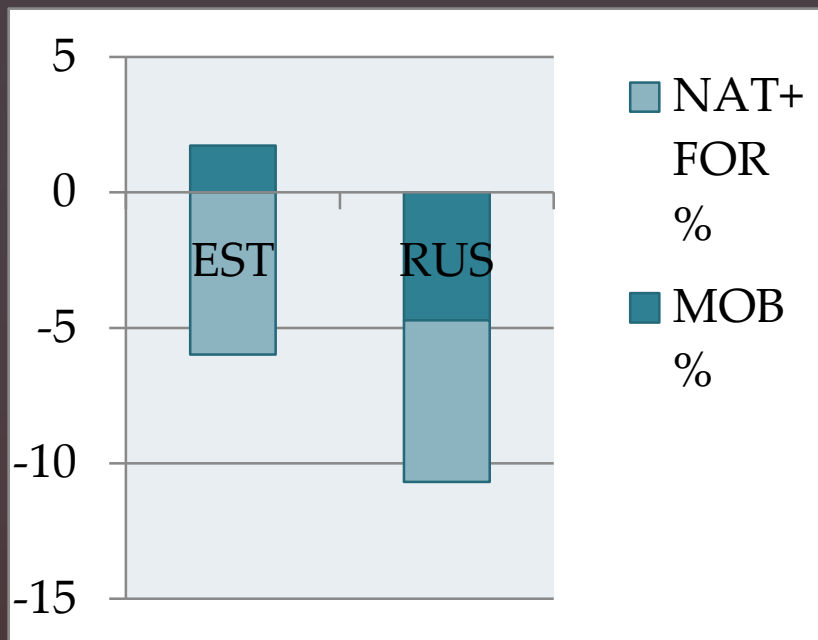


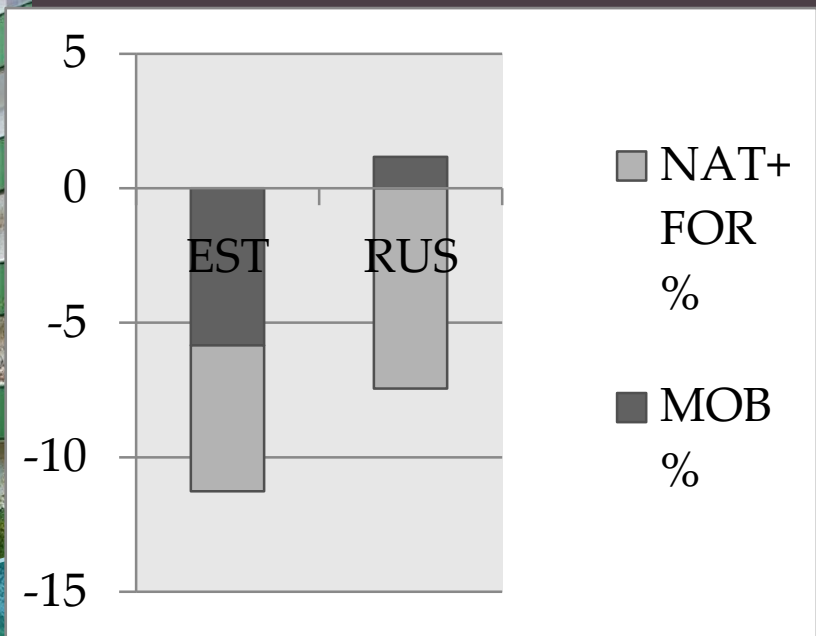
Eestlased – perealised tugevalt negatiivse rändesaldoga



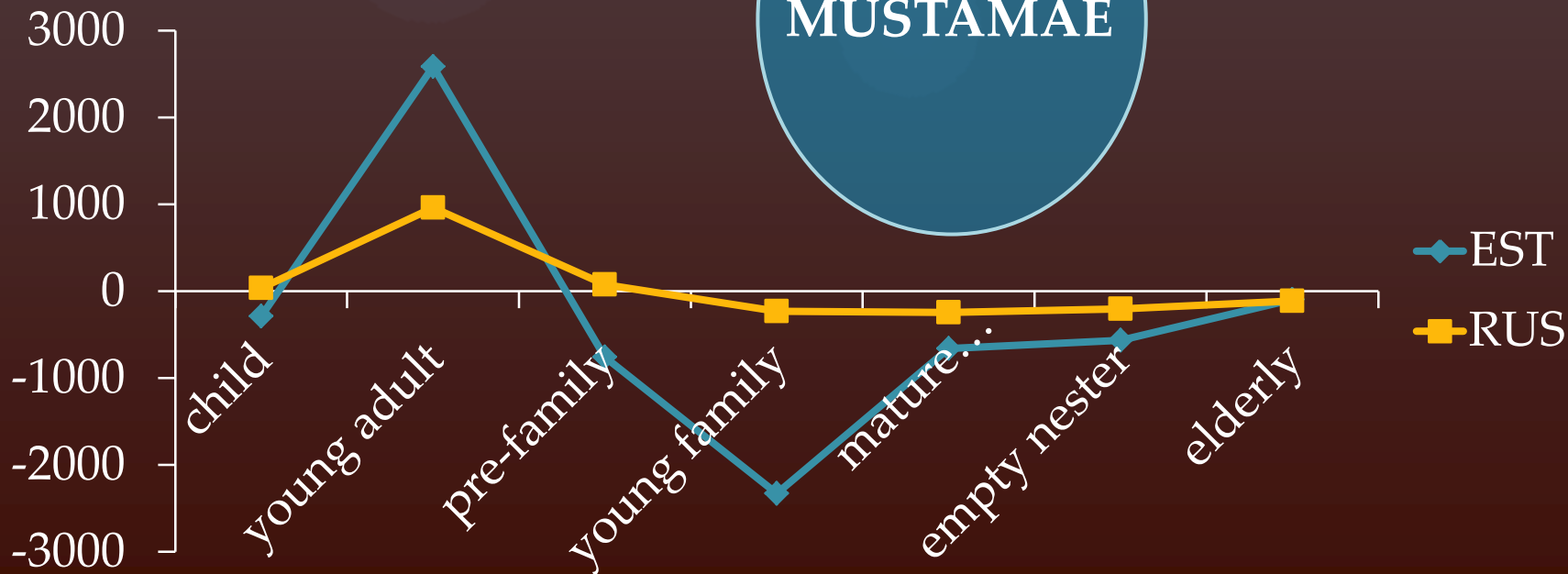
KESKLINN

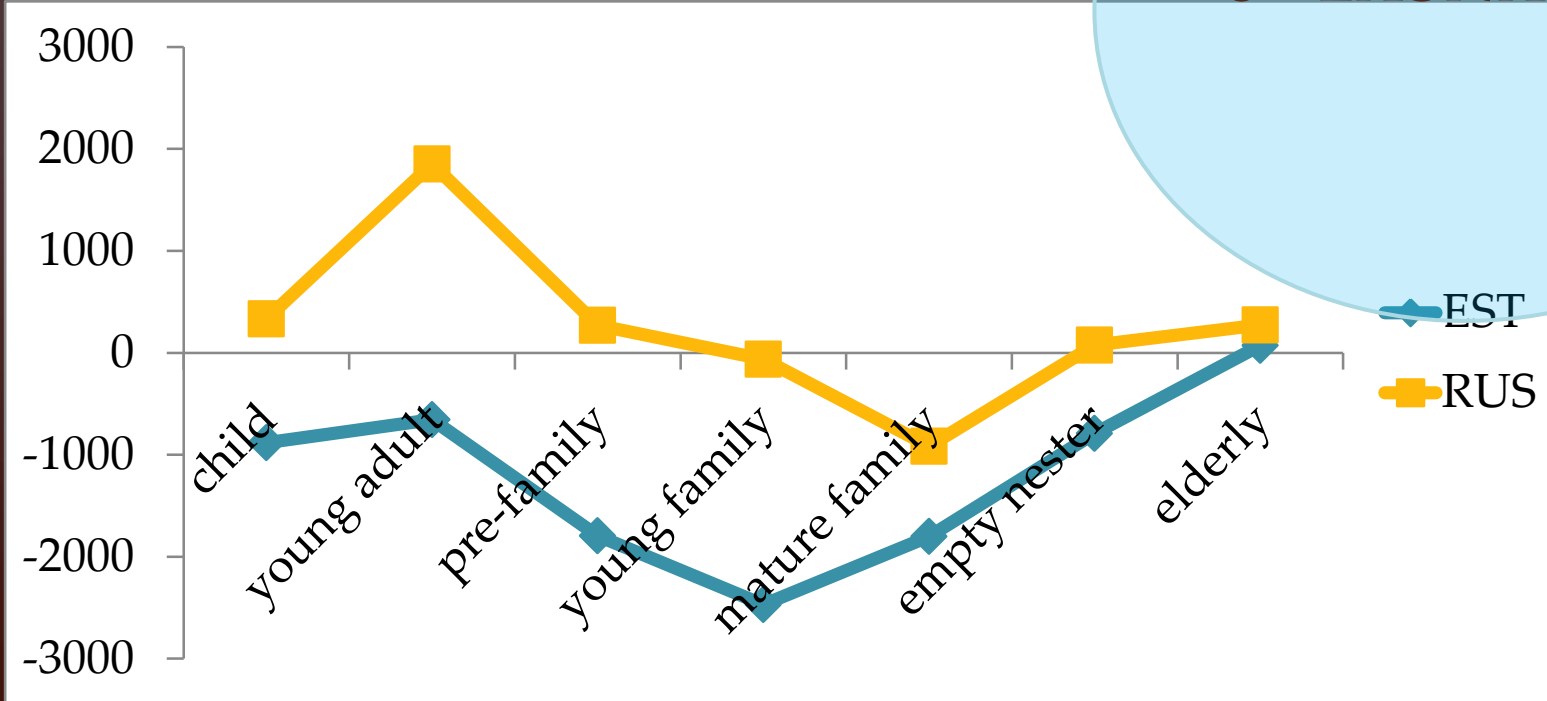
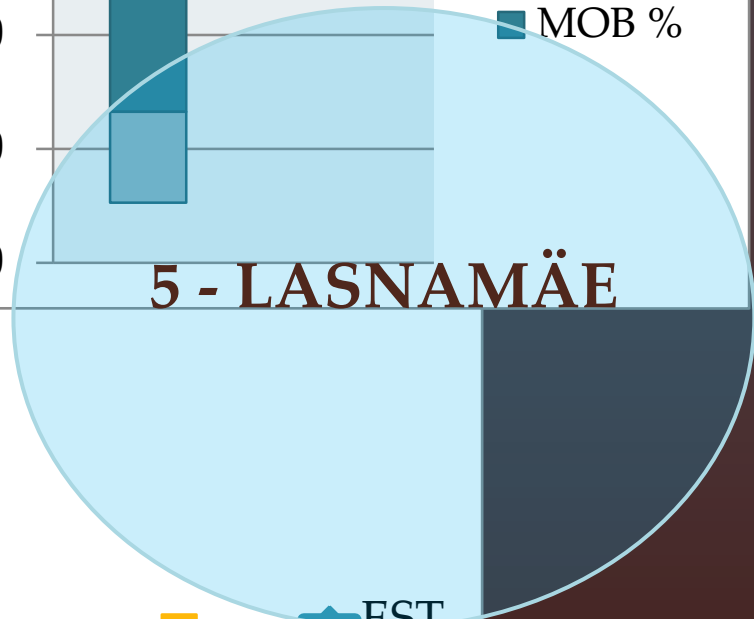
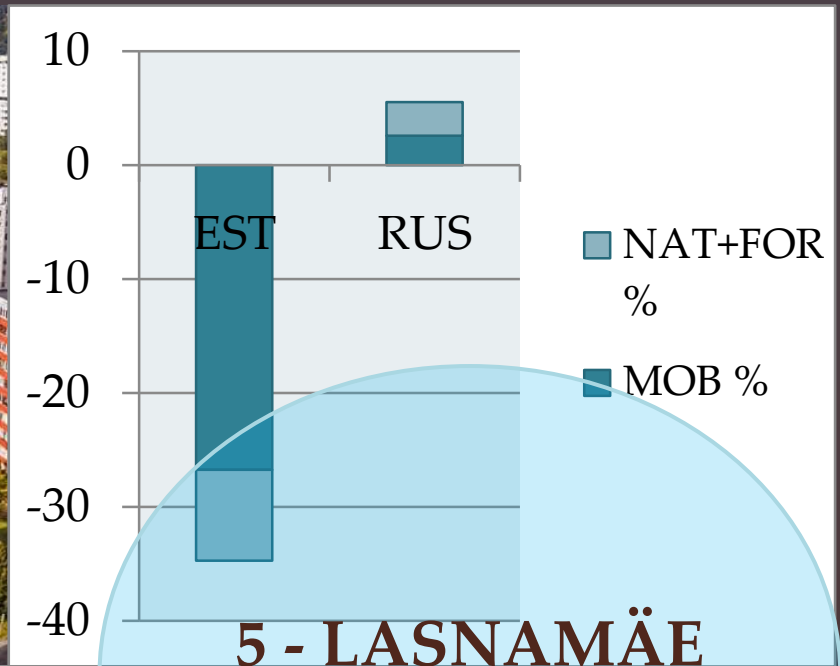


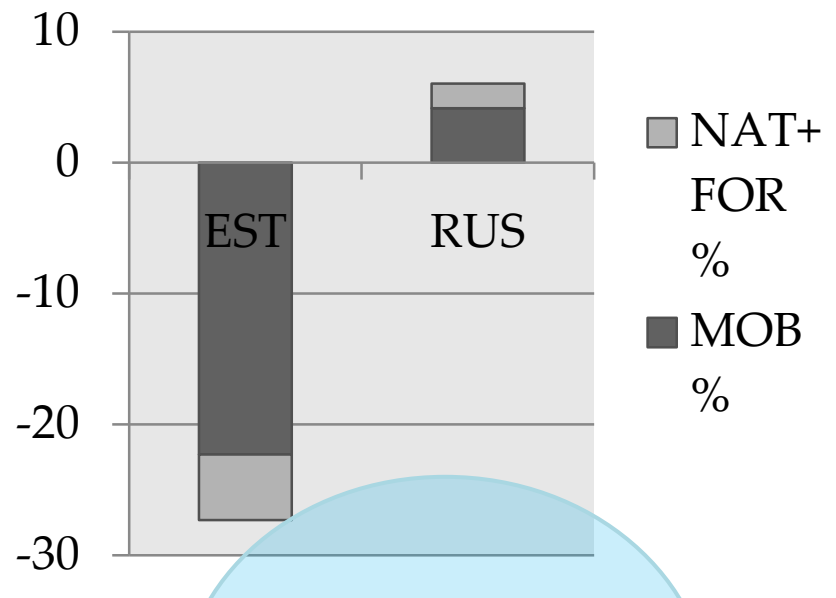




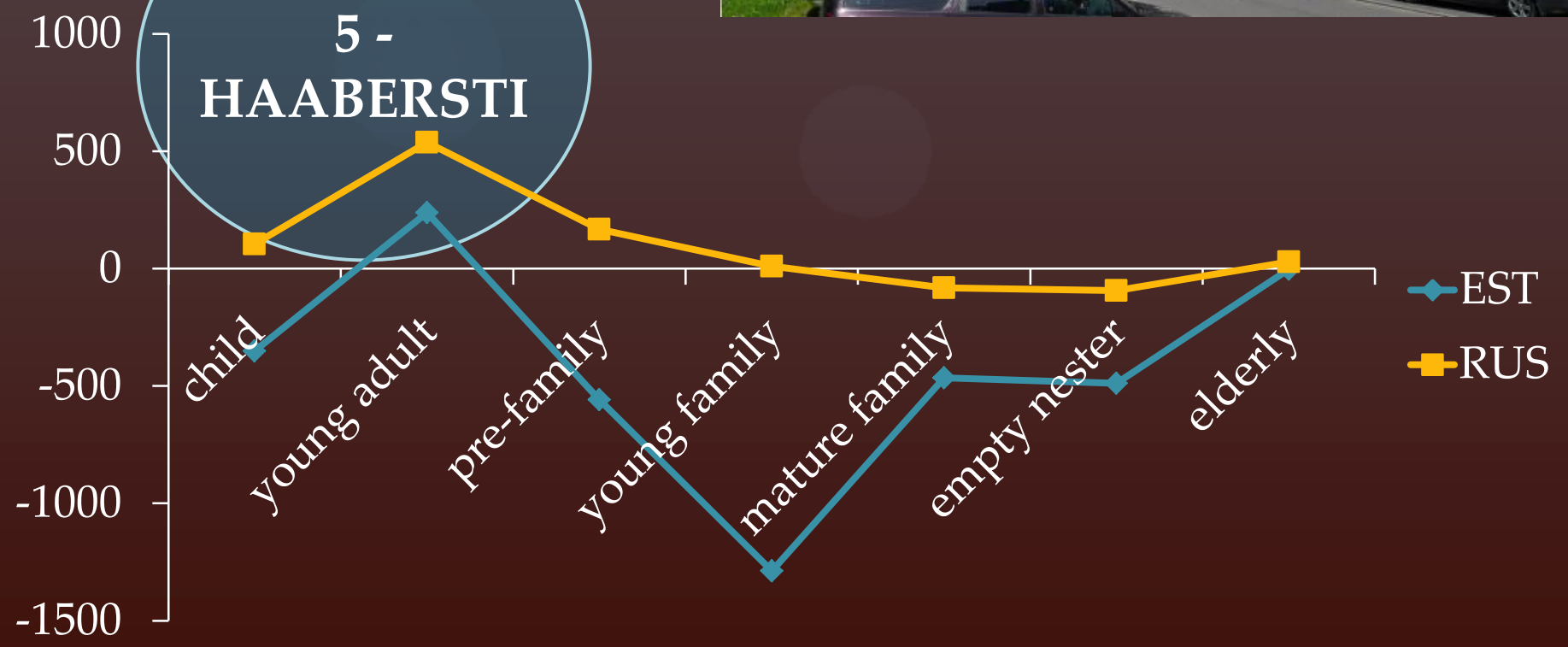
3
MUSTAMÄE







**5 -
HAABERSTI**



SISELINN

- Kasvav populaarsus noorte eestlaste hulgas
- Sots stagnatsioon, kuid etniline mitmekesistumine

ÄÄRELINN

Vene k

- Kiire eesti perede väljaränne
- Väike populaarsus eestlastest noorte hulgas
- Populaarsus vene k hulgas, sh pered

ÄÄRELINN

Muu

- Populaarsus noorte hulgas – nii eesti kui vene

Paneelpiirkonnad pakuvad
püsivamat eluasemekarjääri vene-
keelsele elanikkonnale, kuid on
pigem hüppelauaks eesti noortele

Täna tähelepanu eest!

Kontakt:

anneli.kahrik@ut.ee