

Teed ja tänavad vananemissõbralikes linnades

Anni Müüripeal

November 2018

Tartu Planeerimiskonverents

Alates 2018 aasta suvest olen ma...

...TLÜ Tervisekäitumise ja heaolu **doktorant**

...TLÜ Maastiku ja kultuuri keskuse **nooremteadur**

...järgmise Eesti inimarengu aruande peatoimetaja,
Helen Sooväli-Seppingu, **assistent**

Eakus ja tänavad

TLÜ Tervisekäitumise ja heaolu doktorant
“Augmented Urbans: Visionary, Participatory Planning and Integrated
Management for Resilient Cities” Interreg projekt

TLÜ Maastiku ja kultuuri keskuse nooremteadur
Eesti inimarengu aruanne “Avalik ruum ja demokraatia”

järgmise Eesti inimarengu aruande peatoimetaja,
Helen Sooväli-Seppingu, assistent

Eakus ja tänavad

Improving public health and wellbeing through increased quality of public space in Infrastructure projects by rethinking the modes of public space production by using the framework of

fragility



Isadora Kosofsky "This existence Rosie"

Esitluse ülesehitus

Vananev ühiskond Eestis

Bakalaureuse töö

Näide Orkney saarelt

Ligipääsud ja katkestused

Inimlikud aspekt

Õigus liikumisele
(§ 34)

Solidaarsus

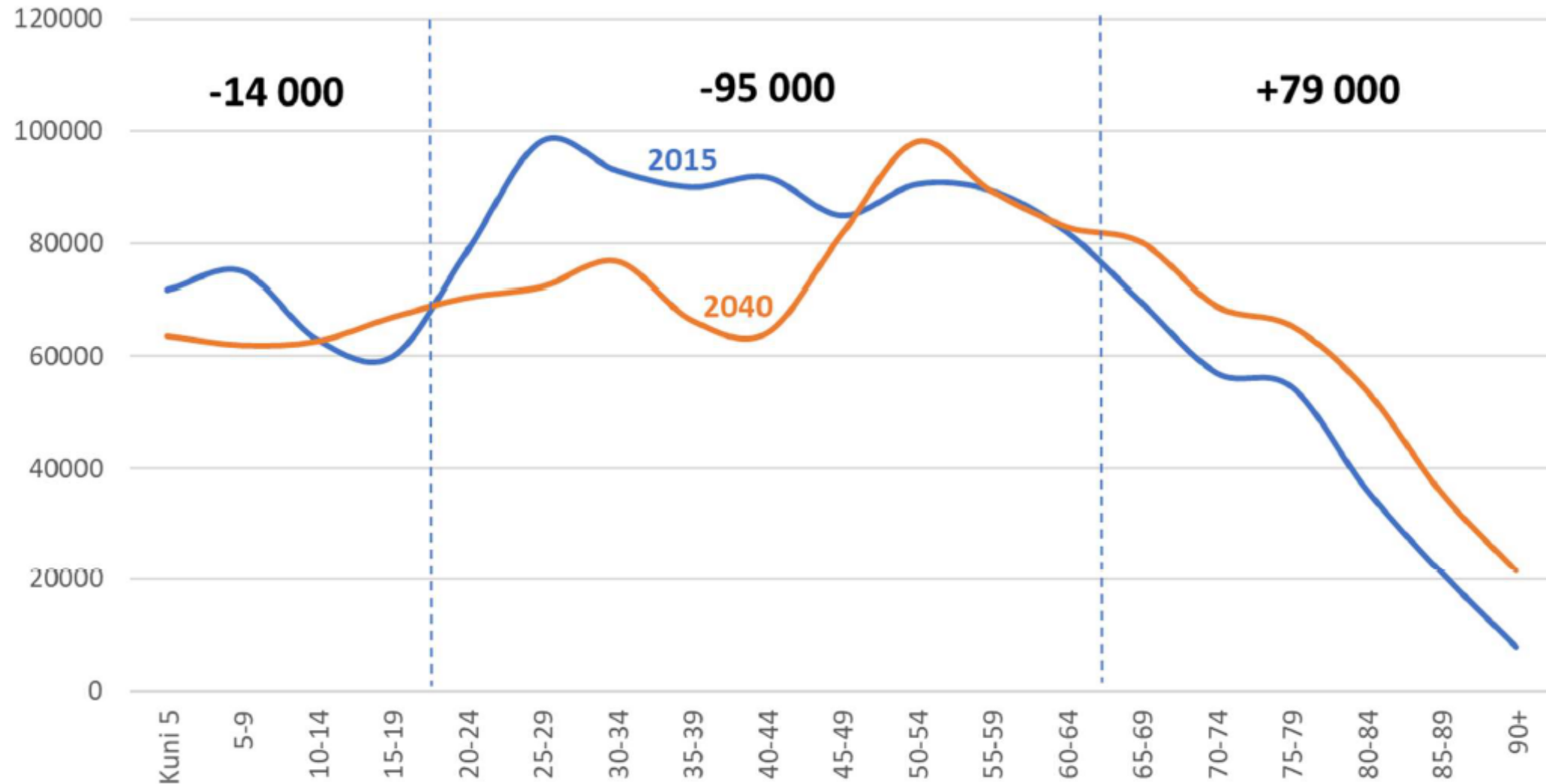
Majanduslikud aspekt

Hoolduskoormus

Eakate tööhõive
tõus

Olulisus

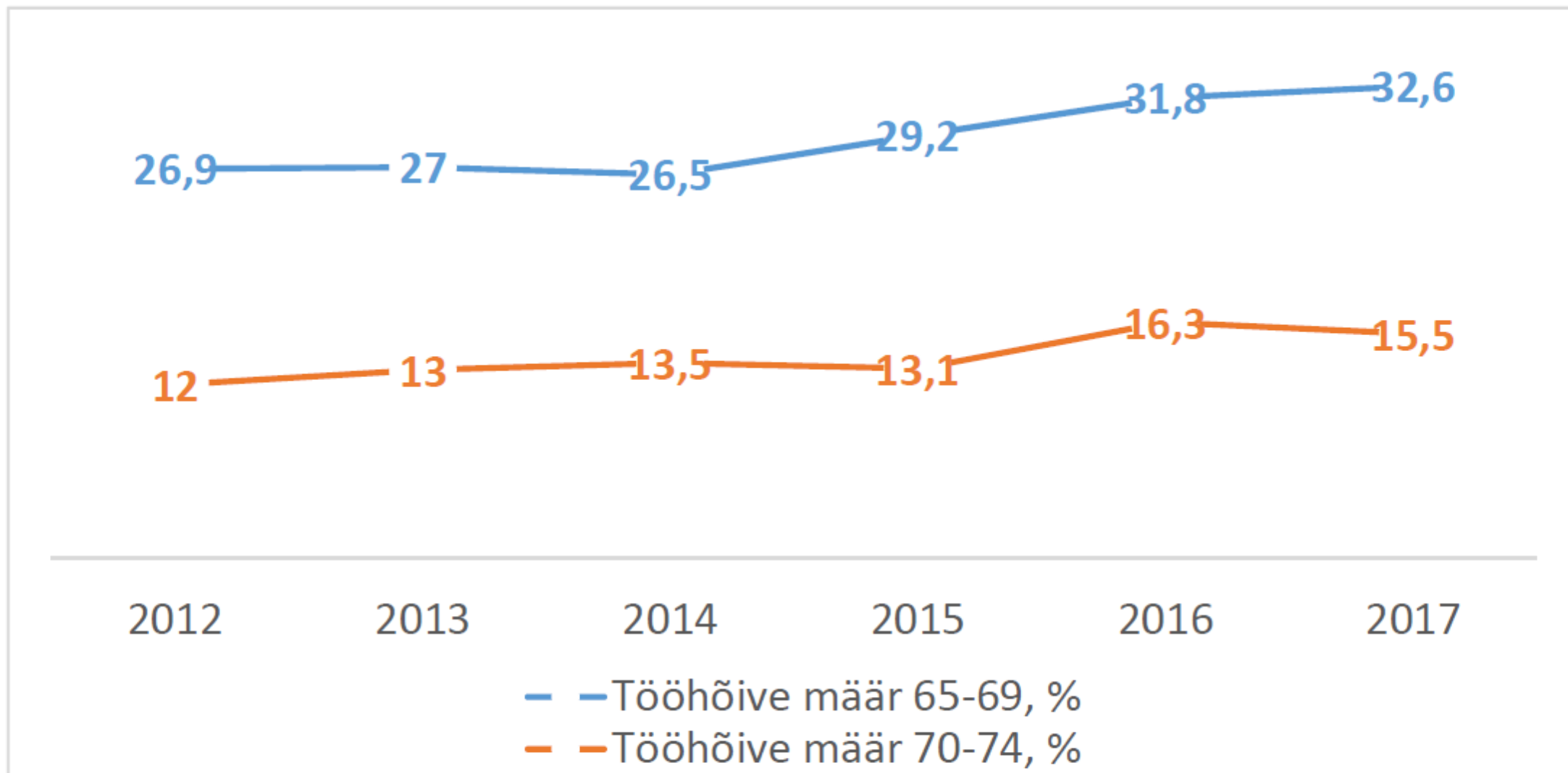
Rahvastikuprognosis Eestis 2015 vs 2040



Allikas: Eurostati rahvastikuprognosis, baastsenaarium (proj_15npms)

OSKA (2018)

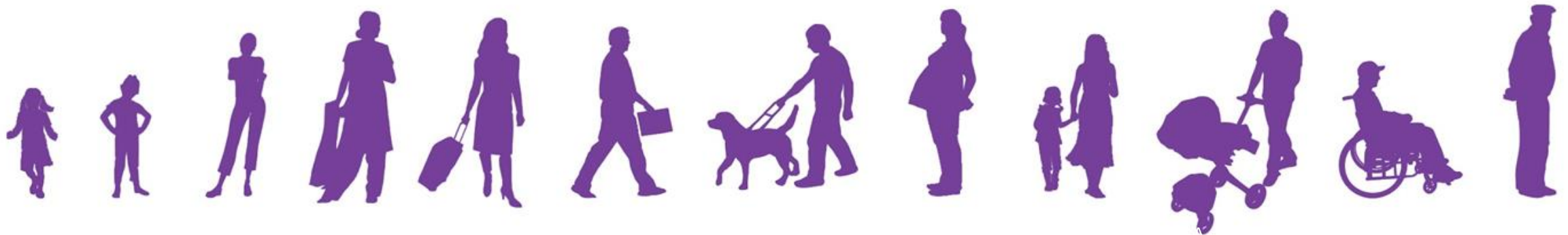
Vanemaealiste hõivemäär on oluliselt tõusnud



Muutuvas ühiskonnas muutuvad
nõudmised tänavatele

Kuidas jõuavad eakad tööle?

Muutuvas ühiskonnas muutuvad nõudmised tänavatele





Kirkwall, Orkney (2016)

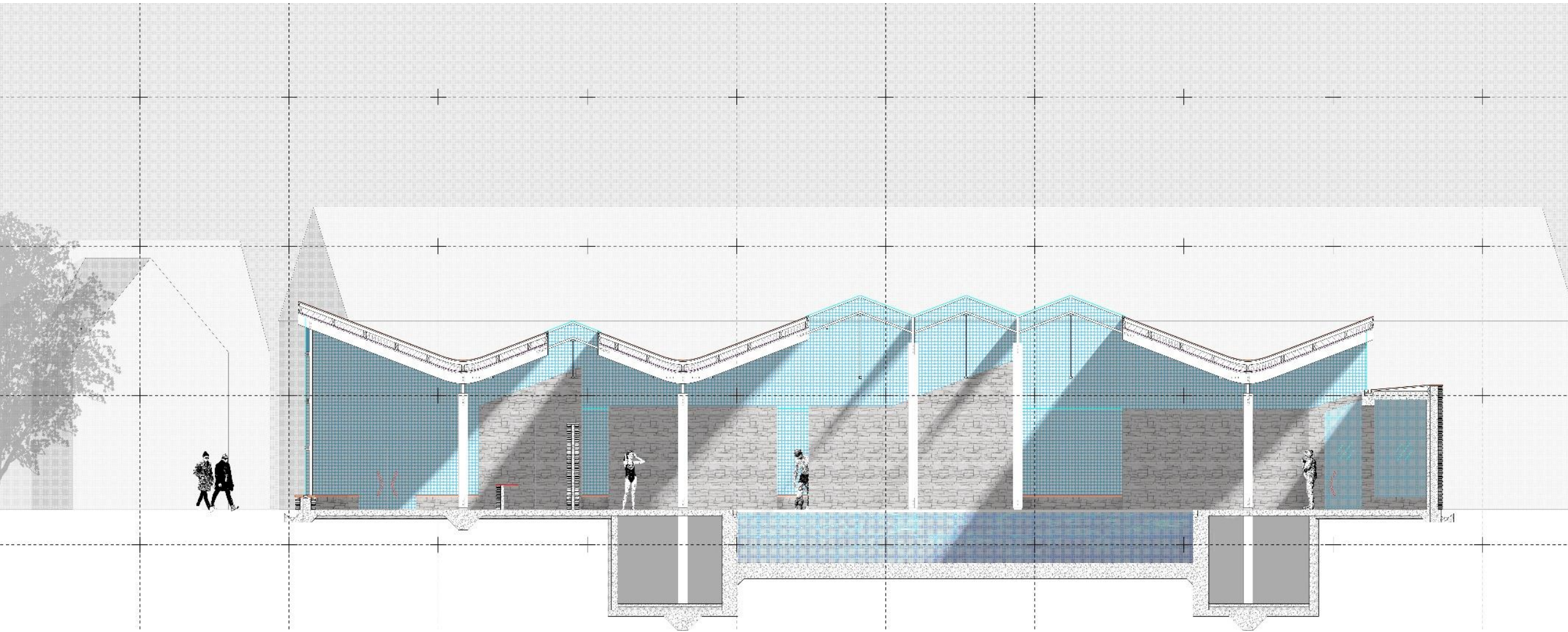
“Being able **to get outdoors is essential** for maintaining health and wellbeing into later life, but many older people find it becomes less easy, enjoyable and meaningful as they age.”

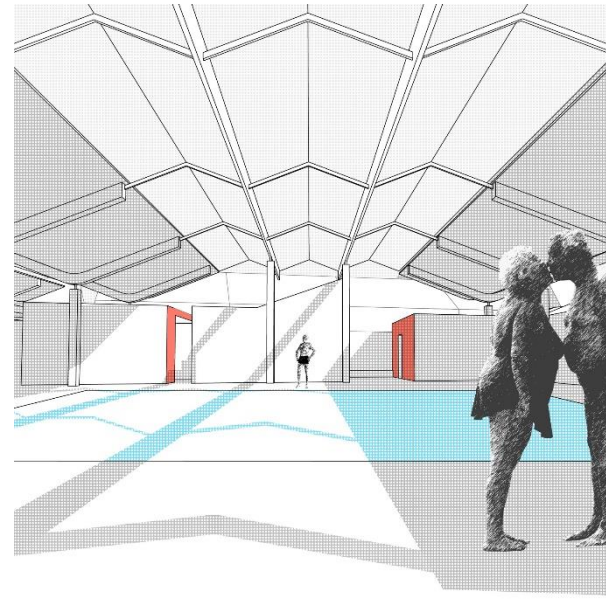
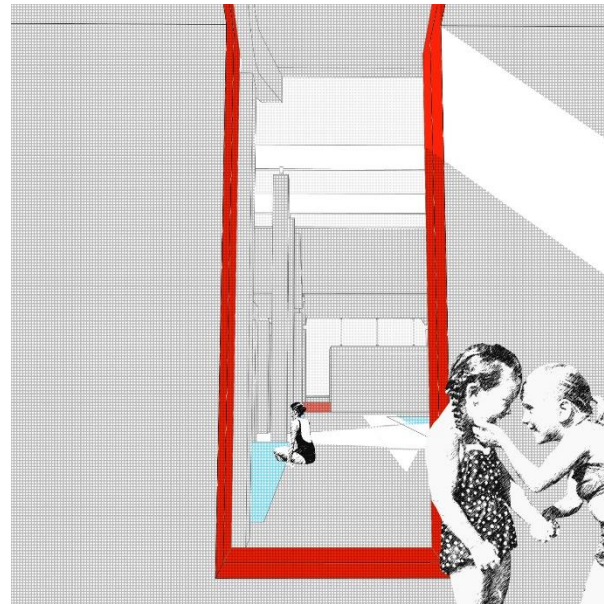
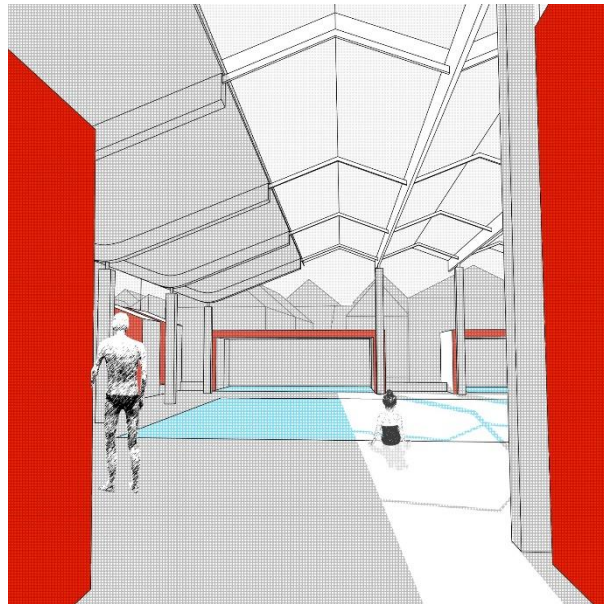
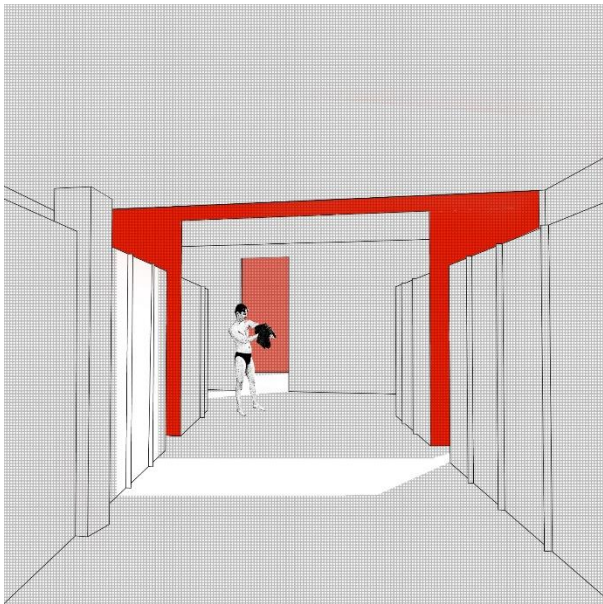
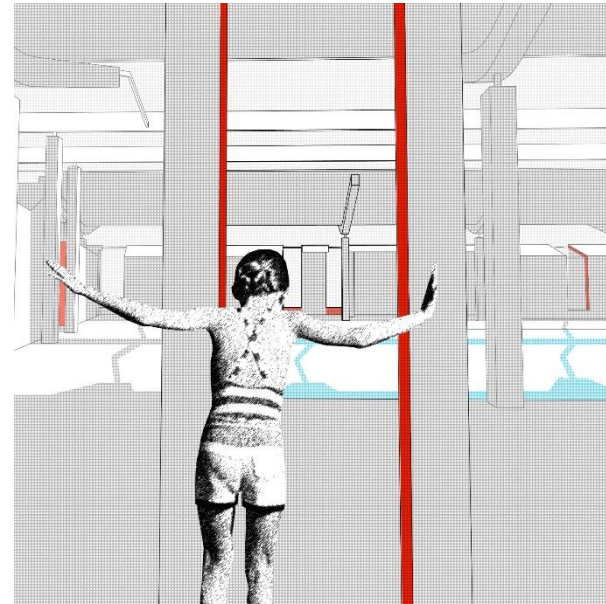
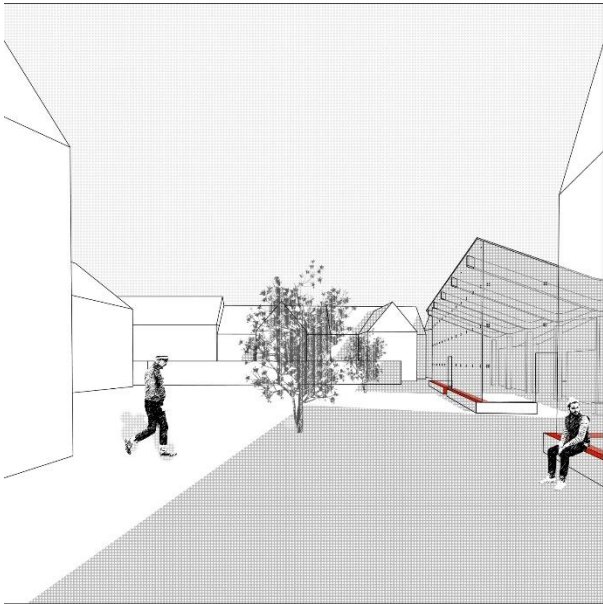
Mood, Mobility and Place (2017)











Involving older people in...

- ...the design of services*
- ...development of the local areas*
- ...intergenerational projects*

Enabling older people...

- ...to stay in their own homes*
- ...socialize with peers*
- ...access local environment*
 - accessible public transport*
 - maintained pavement*
 - lowered curbs*
 - places to sit and rest*
 - public toilets*
 - well-lit streets*

-
-
-
-
- *Well-lit spaces*
- *Legible Environments/Landmarks*
- *Access to Services*
- *Access to Nature*
- *Social Opportunity*
- *Compacting the City*
- *Optimising Mobility*
- *Mix of Uses*
- *Safety and Security*
- *Enhancing Cultural Memories*
- *Design for the Senses*
- *Enhancing Rituals*
-
-
-





◀ Shapinsay Ferry North Isles Ferry ▶

L66 BYR

Fragmented spaces contribute to older people's **disorientation** and sometimes to feelings of **fear and alienation**. We need less fragmented space within cities, and **more** clearly **legible urban and green space**.

Kõiki kaasava elukeskkonna kavandamine & loomine

2012



Kuidas edasi?