

Eesti Kunstiakadeemia arhitektuur ja linnaplaneerimine 2017

Magistritöö / Diploma project

Eva-Liisa Lepik

Rannakultuuriruumid Coastal spaces

*Ääremaaliste rannakogukondade aktiveerimine
Revitalizing peripheral coastal communities*

Juhendajad / Tutored by
Andres Alver / Indrek Rünkla

Planeerimiskonverents
Tartu nov 2017

Eesmärk Intention

Magistritöös on uuritud rannikuruumide identiteedi tugevdamise ja ääremaaliste rannakogukondade elavdamise võimalusi.

Possibilities to strengthen the identity of coastal spaces and revitalize peripheral coastal communities are researched in the thesis.



foto: Pärnu Postimees

Rannamaastikud Coastal landscapes

Magistritöö kontekstiks on rannikumaastikud.
Coastal landscapes are for the context of the thesis.



Maastikud on tekkinud looduse ja inimese koosmõju tulemusel.
Magistritöös on rannikumaastike käsitletud maastikena, millel toimuv igapäevategevus on seotud merega.

*Landscapes have emerged through the symbiosis of natural processes and human activity.
Coastal landscapes are defined as landscapes which accommodate activities connected with the sea.*



Töö ülesehitus

Structure of the work

1

Rannikuruumidega tegelemise PÕHJUSED

Intro about seascapes and reasons to deal with coastal spaces

2

Rannikulised SKAALAD ja KIHISTUSED

Coastal scales and layering

3

Pärnumaa rannaalade TEGEVUSVALDKONNAD ja nende RUUMILISED VAJADUSED

Activities at the coast of Pärnu county and their spatial needs

4

PROJEKTID rannakultuuriruumide aktiveerimisest Liu paaditehase, Kabli linnujaamas ja Audru poldri näitel

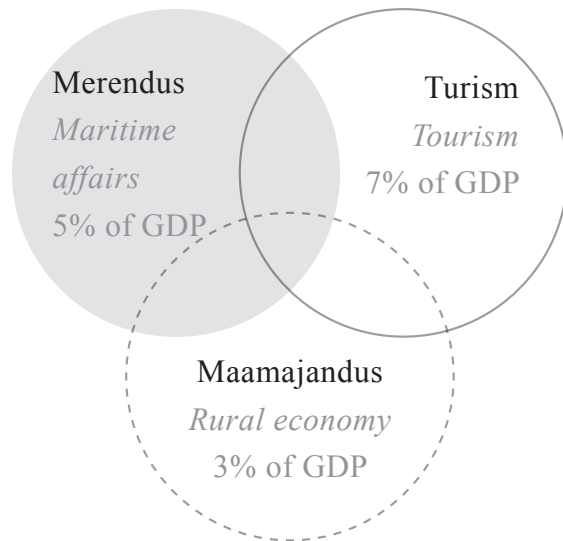
Projects to activate coastal spaces in Liu boatyard, Kabli bird centre and Audru polder

Põhjused rannakultuuriruumide elavdamiseks

Reasons to vitalize coastal spaces

1

Üleriigiline majanduslik olulisus
Nationwide economic importance



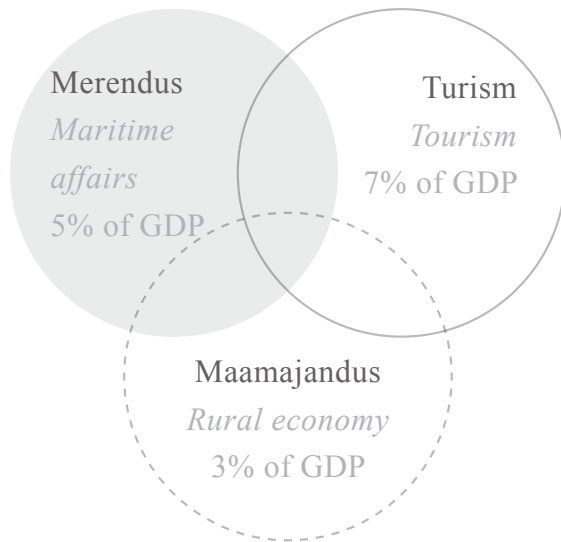


Põhjused rannakultuuriruumide elavdamiseks

Reasons to vitalize coastal spaces

1

Üleriigiline majanduslik olulisus
Nationwide economic importance



2

Regionaalsed sotsiaalsed muutused
Regional social changes

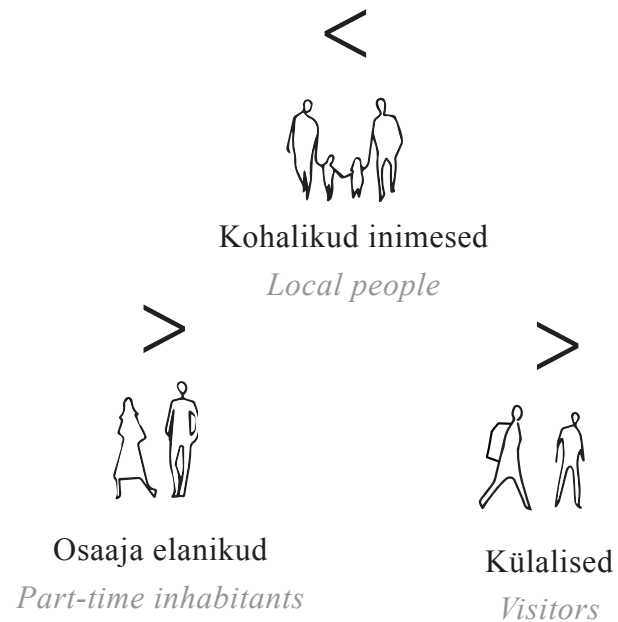




foto: Pärnu Postimees

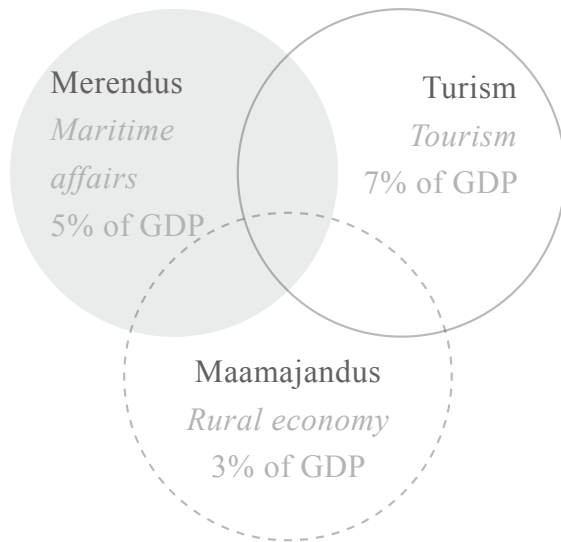


Põhjused rannakultuuriruumide elavdamiseks

Reasons to vitalize coastal spaces

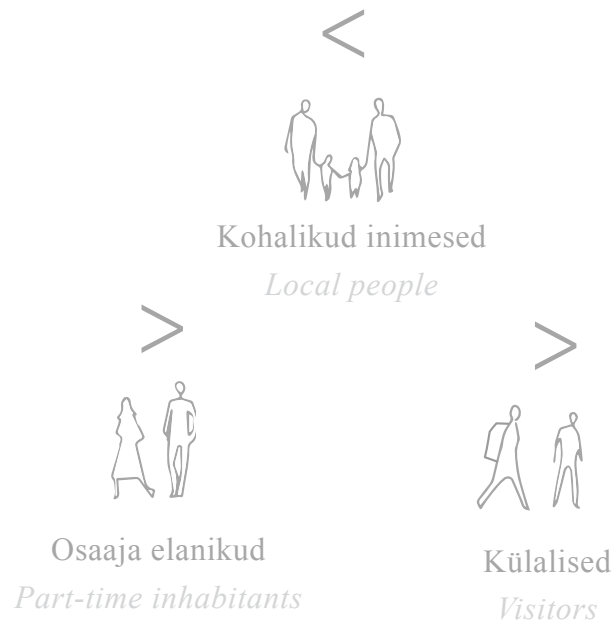
1

Üleriigiline majanduslik olulisus
Nationwide economic importance



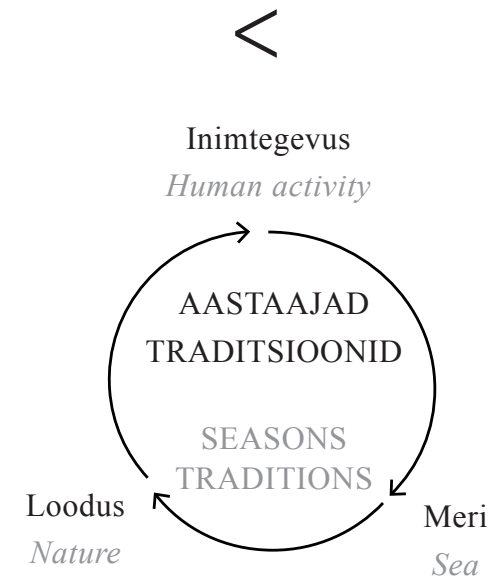
2

Regionaalsed sotsiaalsed muutused
Regional social changes



3

Kogukondlikud kultuurilised muutused
Community based cultural changes



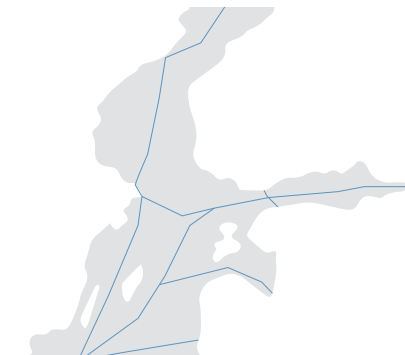


Rannikulised skaalad ja kihistused

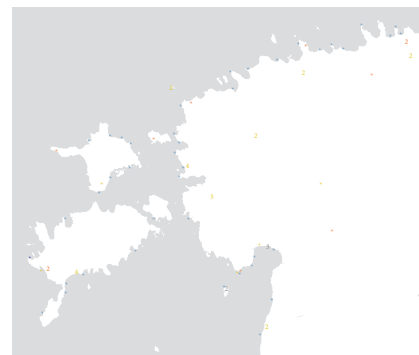
Coastal scales and layering



Euroopa
Europe



Läänemeri
Baltic sea



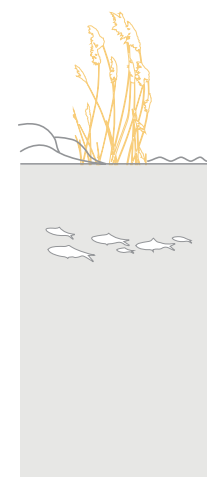
Eesti
Estonia



Pärnumaa
Pärnu county



Rannaküla
Coastal village

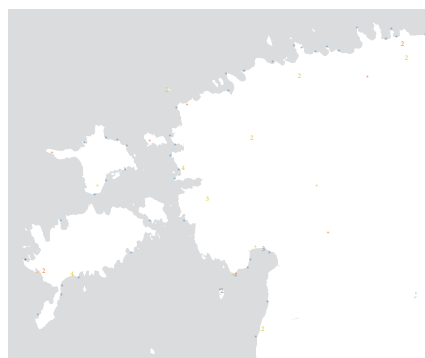


Rand
Seashore

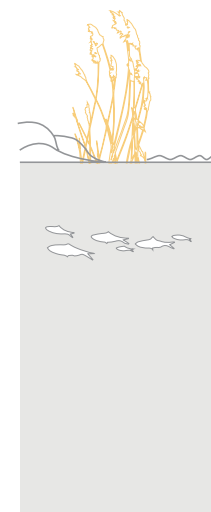
Suurtest planeeringulistest skaaladest rohujuure tasandile
From large scale plannings to grass roots level



Euroopa
Europe



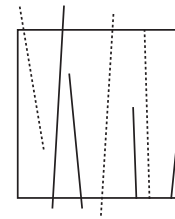
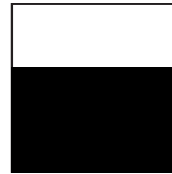
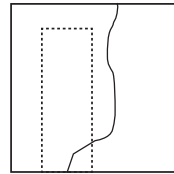
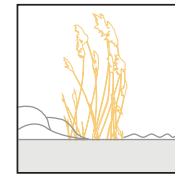
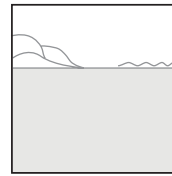
Eesti
Estonia



Rand
Seashore



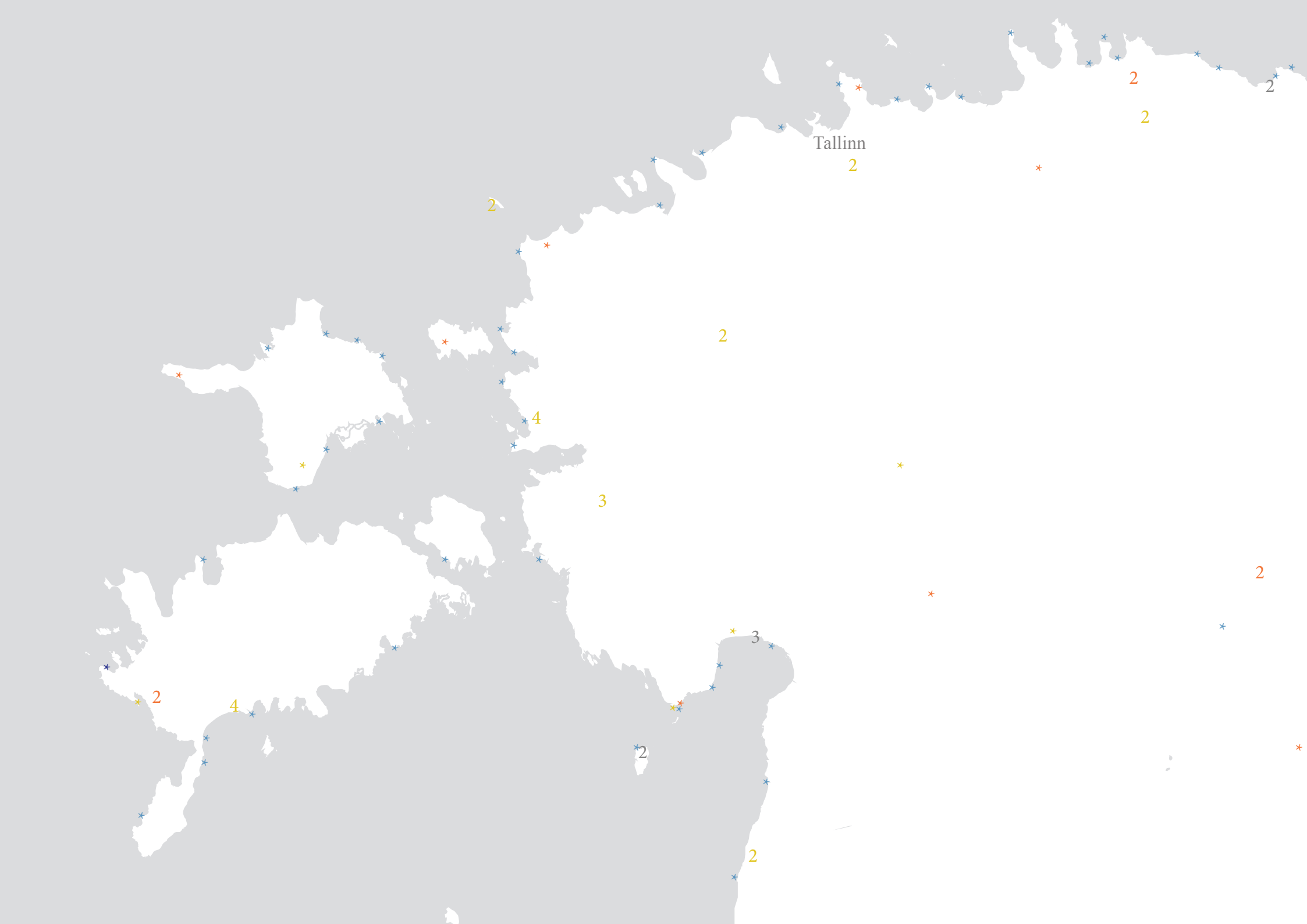
Rannikulised ruumikvaliteedid
Spatial qualities at the coastline

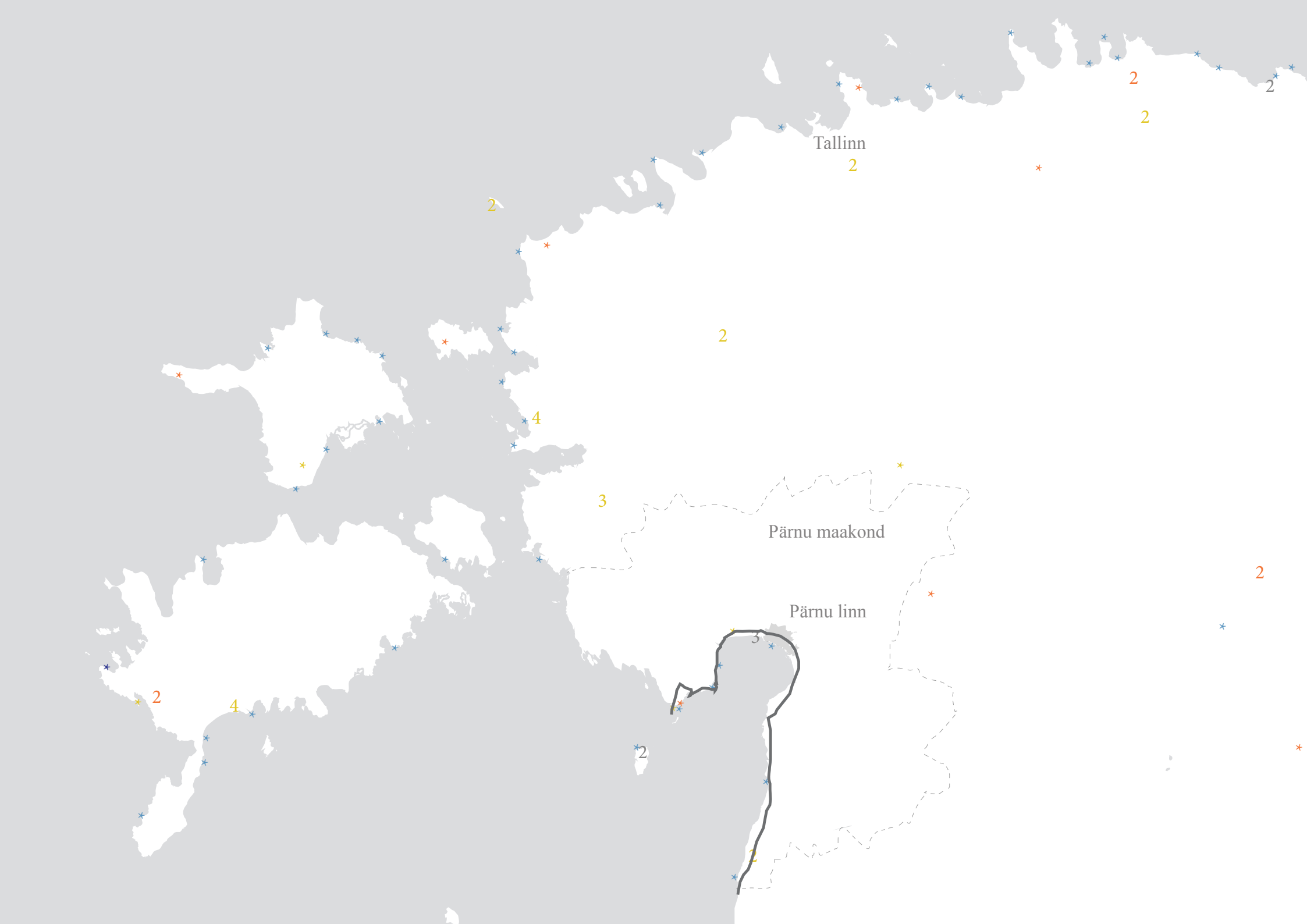


Maamärgilisuus
Landmarking

Horisontaalsus
Horizontality

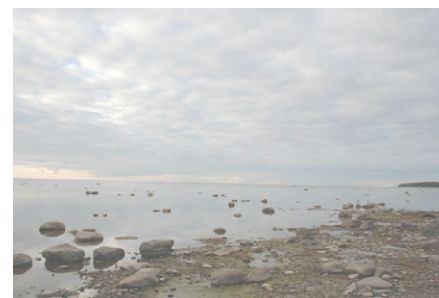
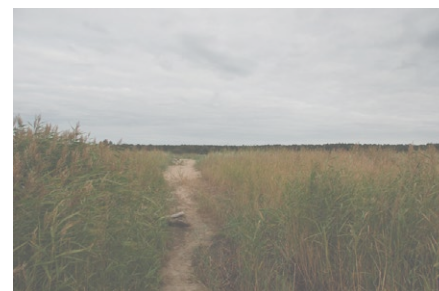
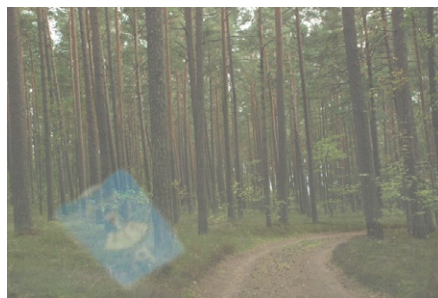
Vertikaalsused
Verticalities





Välivaatlused

Field study



Üksluine Pärnumaa topograafia

Repetitive topographies of Pärnu county

500 m

1

2

3

4

5

6

7

8

9

1

2

3

4

5

6

7

8

9

Audru
polder

Valge-
ranna

Lindi
sadam

Liu
sadam

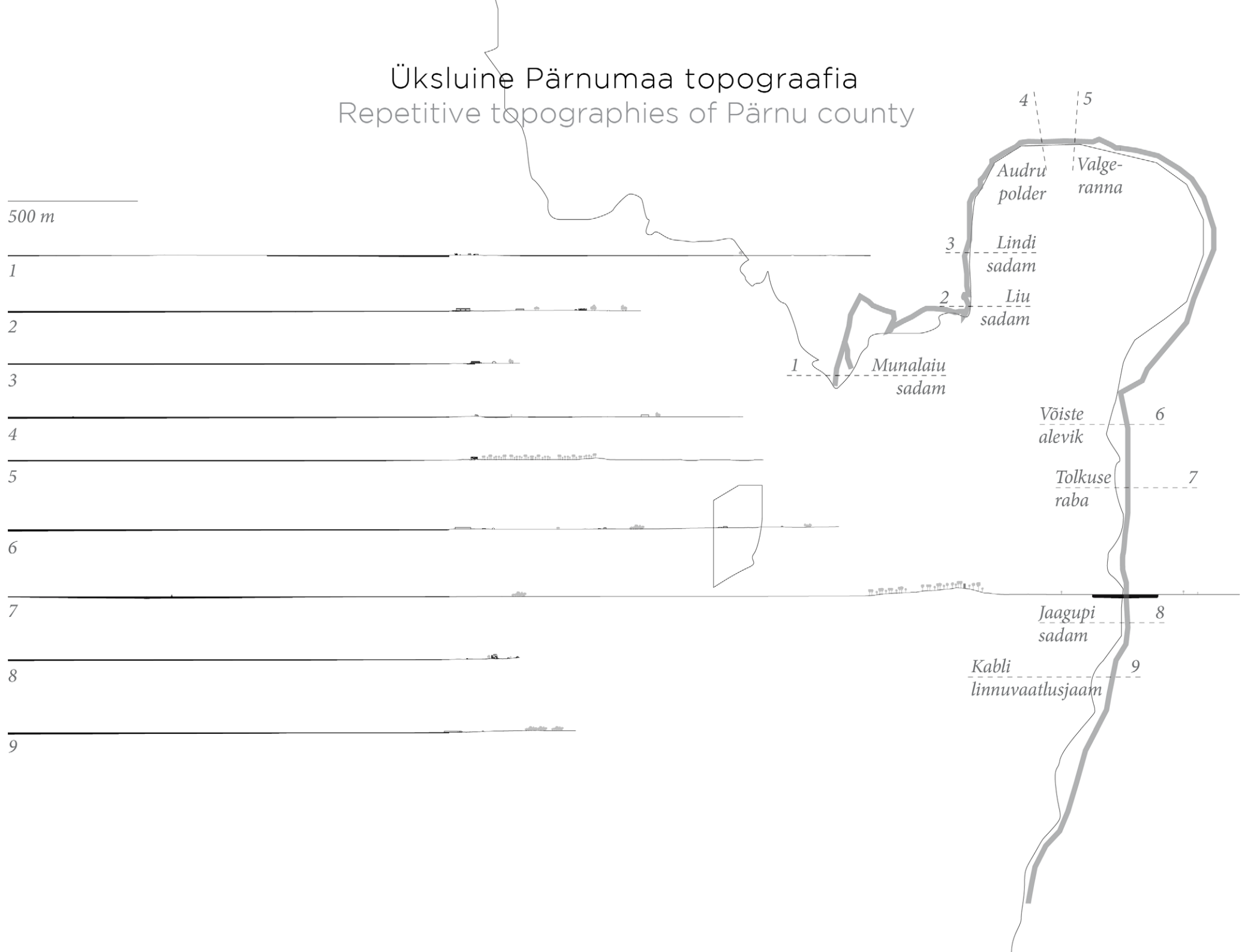
Munalaiu
sadam

Võiste
alevik

Tolkuse
raba

Jaagupi
sadam

Kabli
linnuvaatusjaam







Rannaniit
Coastal meadow



Roostik
Reed



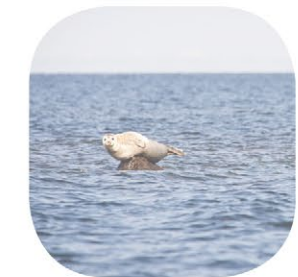
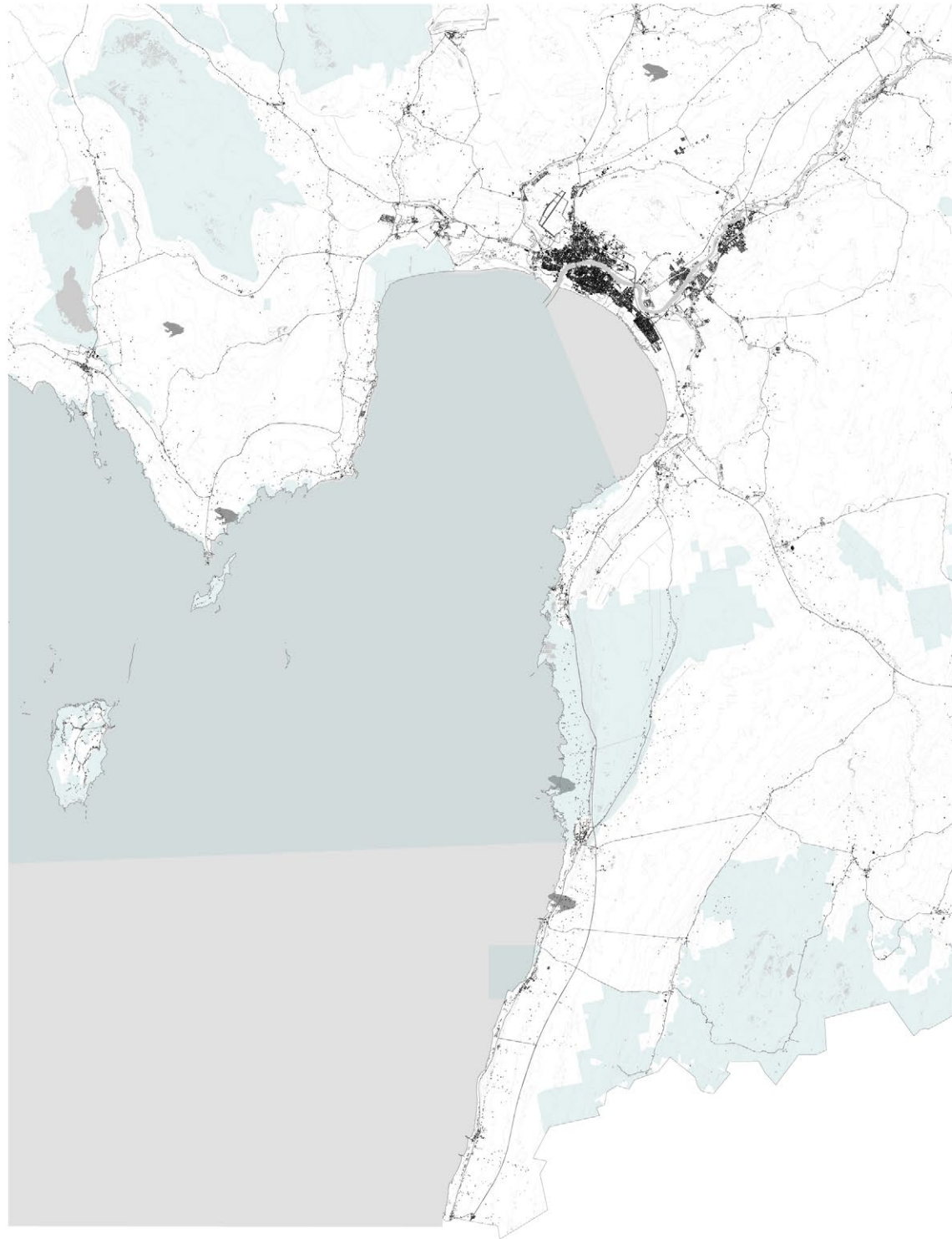
Loodusteadus
Natural science



Rannaveised
Coastal cattle



Hülged
Seals

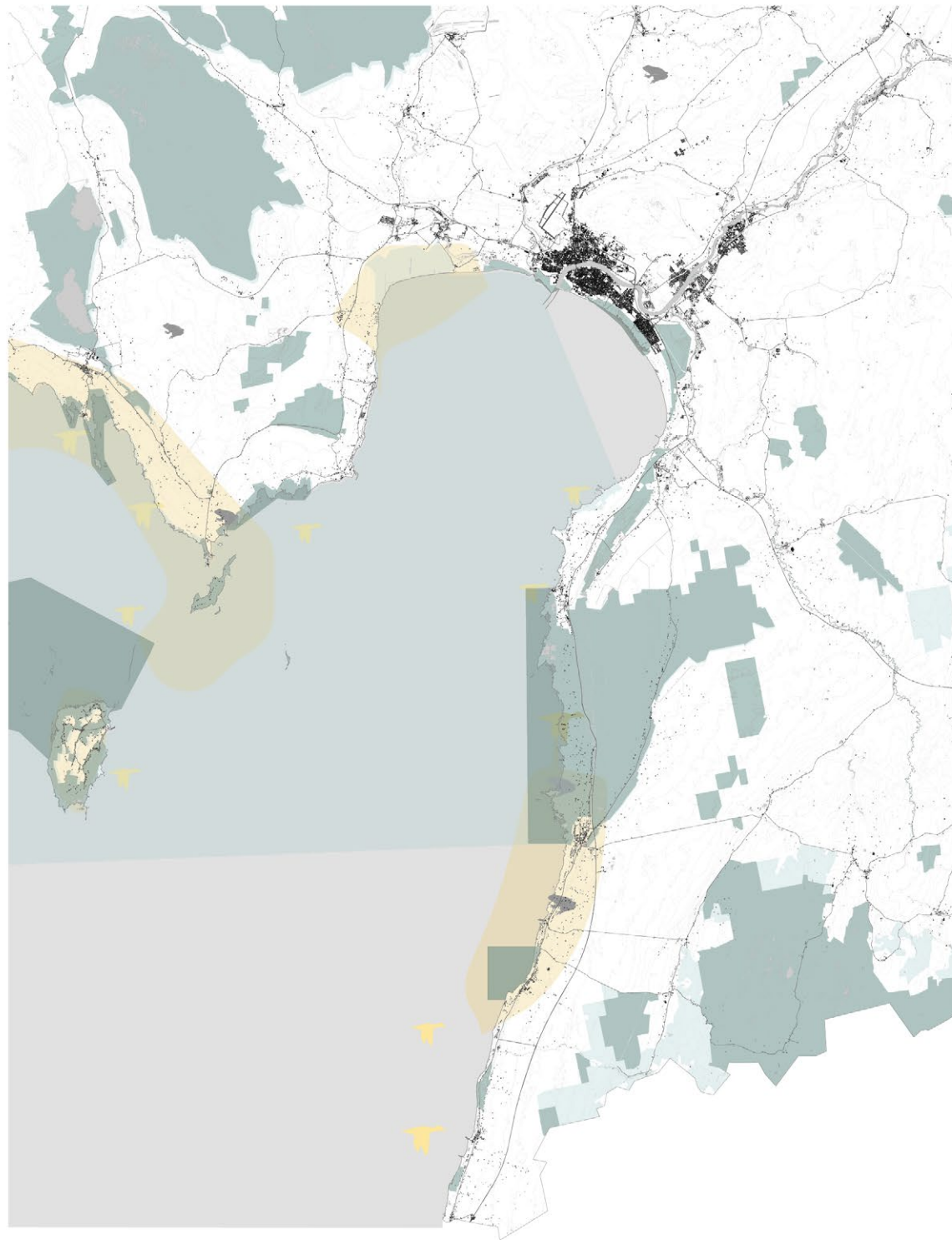


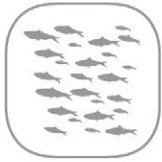


Linnuvaatlus
Birdwatching



Ornitoloogia
Ornithology





Räime kudeala
Baltic herring



Ranniku kalapüük
Coastal fishing



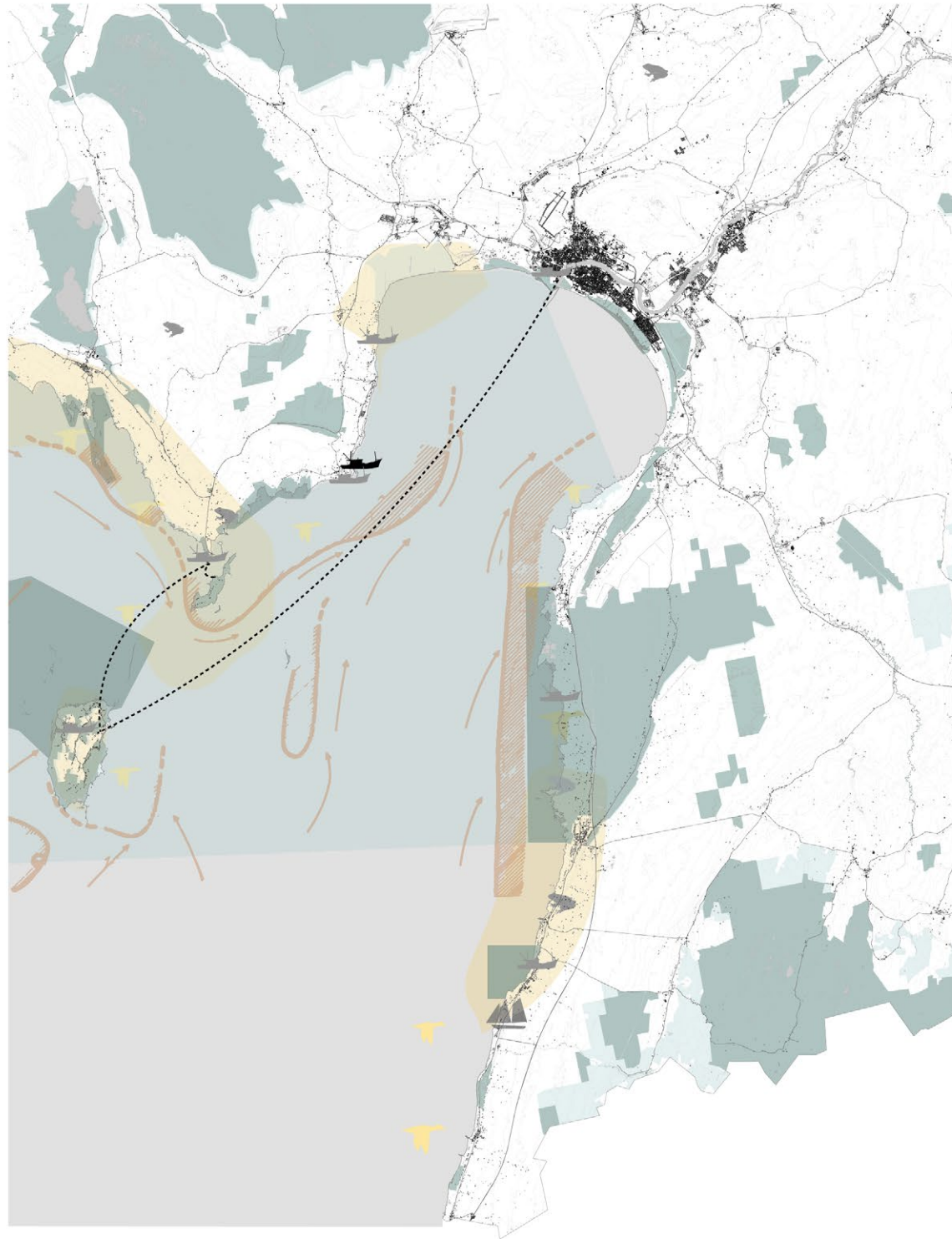
Jää kalapüük
Ice fishing



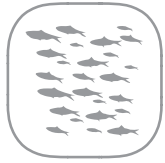
Paadiremont
Boat repair



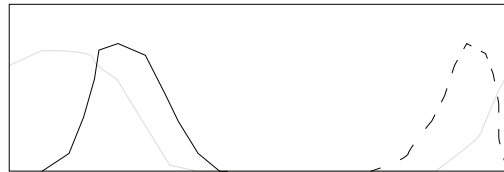
Kala töötlemine
Fish processing



Rannikulised tempod Coastal rhythms

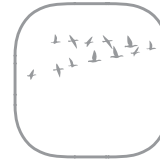


Kalastus
Fishing

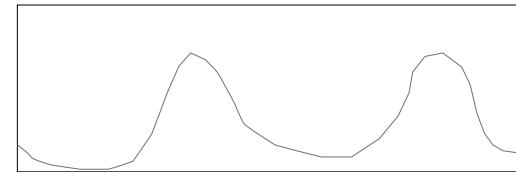


KEVAD
SPRING

SÜGIS
AUTUMN



Lindude ränne
Bird migration

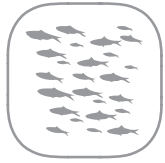


KEVAD
SPRING

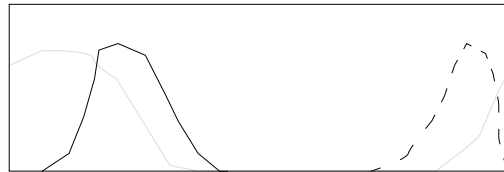
SÜGIS
AUTUMN

Rannikulised tempod

Coastal rhythms

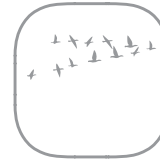


Kalastus
Fishing

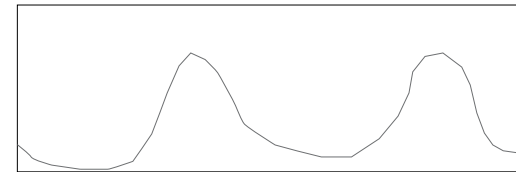


KEVAD
SPRING

SÜGIS
AUTUMN



Lindude ränne
Bird migration

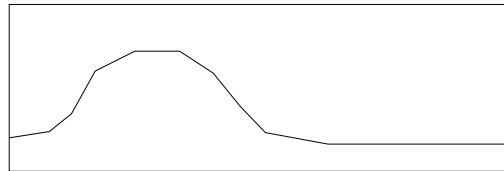


KEVAD
SPRING

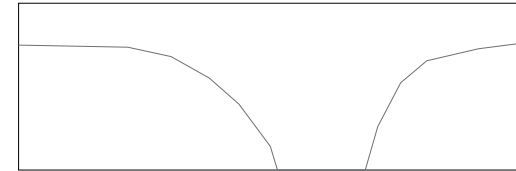
SÜGIS
AUTUMN



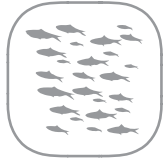
Paadiremont
Boat repair



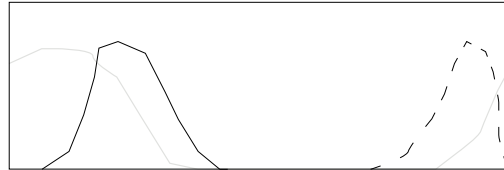
Noorte kooliaeg
School



Rannikulised tempod Coastal rhythms

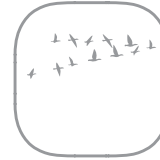


Kalastus
Fishing

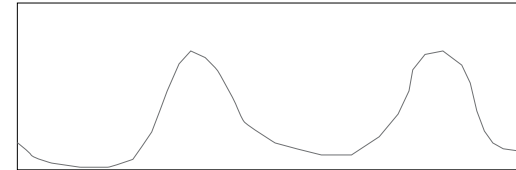


KEVAD
SPRING

SÜGIS
AUTUMN



Lindude ränne
Bird migration

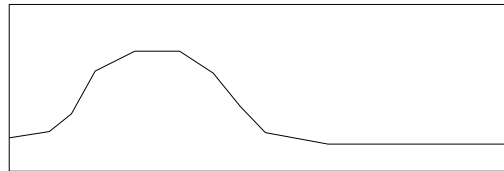


KEVAD
SPRING

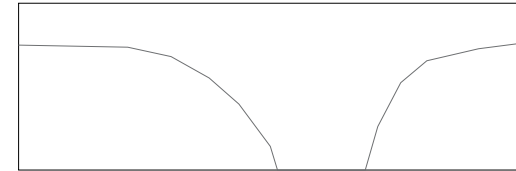
SÜGIS
AUTUMN



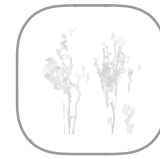
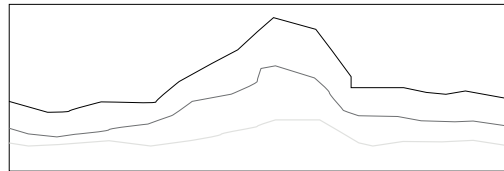
Paadiremont
Boat repair



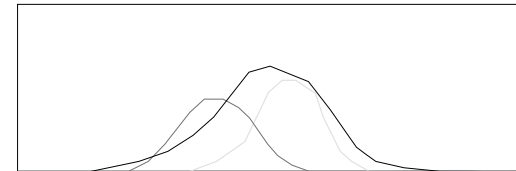
Noorte kooliaeg
School



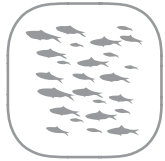
Turism
Tourism



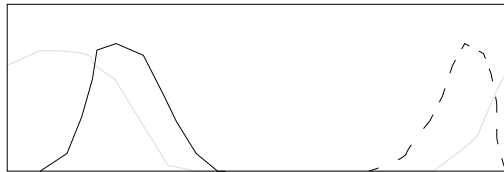
Taimede õitseae
Blossom



Rannikulised tempod Coastal rhythms

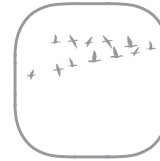


Kalastus
Fishing

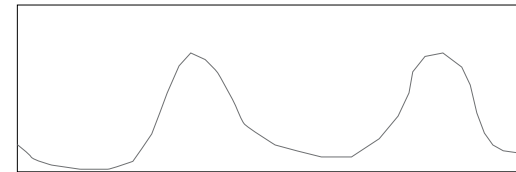


KEVAD
SPRING

SÜGIS
AUTUMN



Lindude ränne
Bird migration

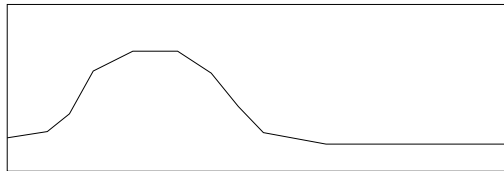


KEVAD
SPRING

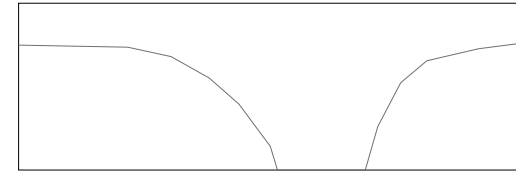
SÜGIS
AUTUMN



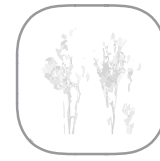
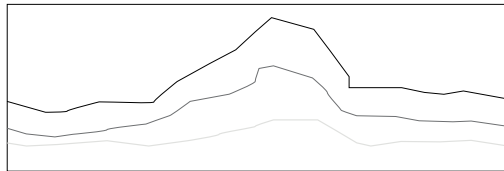
Paadiremont
Boat repair



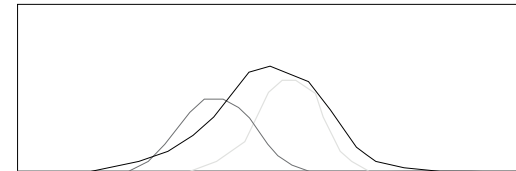
Noorte kooliaeg
School



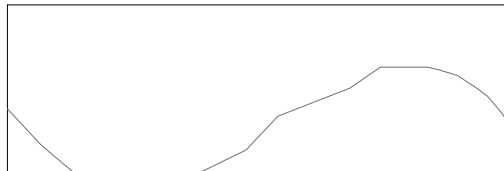
Turism
Tourism



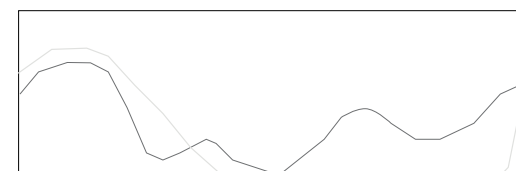
Taimede õitseae
Blossom



Hülgevaatlus
Seal observation

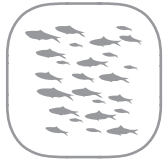


Ekstreemsemad ilmad
More extreme weather

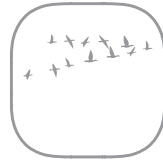


Rannikuliste tegevuste integreerimine

Integration of coastal activities



Kalastus
Fishing



Lindude ränne
Bird migration



Paadiremont
Boat repair



Noorte kooliaeg
School



Turism
Tourism



Taimede õitseag
Blossom



Hülgevaatlus
Seal observation

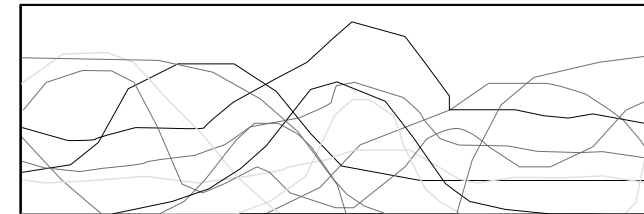


Ekstreemsemad ilmad
More extreme weather



Hooajalisuse vähendamine
rannikuliste ääremaade elavdamiseks

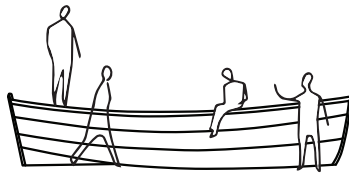
*Decreasing seasonality for vitalize
coastal communities*



KEVAD
SPRING

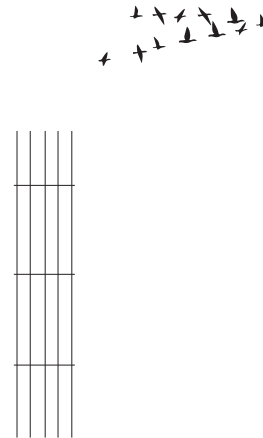
SÜGIS
AUTUMN

Rannikulised tegevused Coastal activities



KOHALIK ETTEVÕTLUS Osalusturism

*Local enterprises with
high quality low density
cultural tourism*



TURISM Kuurortturismism vs vaatlusturism

*Tourism emphasizing observational
qualities beside resort possibilities*

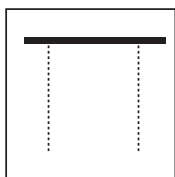


TEADUSTEGEVUS Loodusuurimused

*Research activity
about natural qualities*

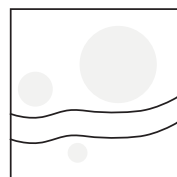
Rannikulised ruumivajadused

Spatial need at the coastline



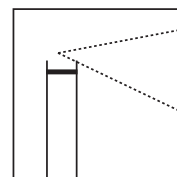
Kaitstud hooajad

Covered seasons



Tegevuspind

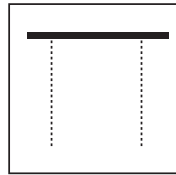
Activities ground



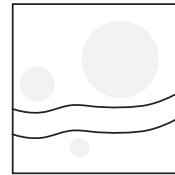
Vaated

Views

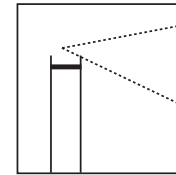
Ruumivajadused kombineeritud kvaliteetidega
Spatial needs combined with qualities



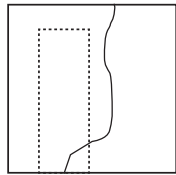
Kaitstud hooajad
Covered seasons



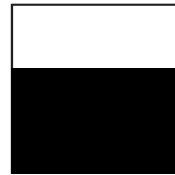
Tegevuspind
Activities ground



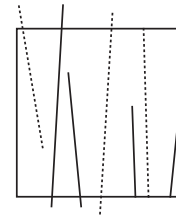
Vaated
Views



Maamärgilisus
Landmarking

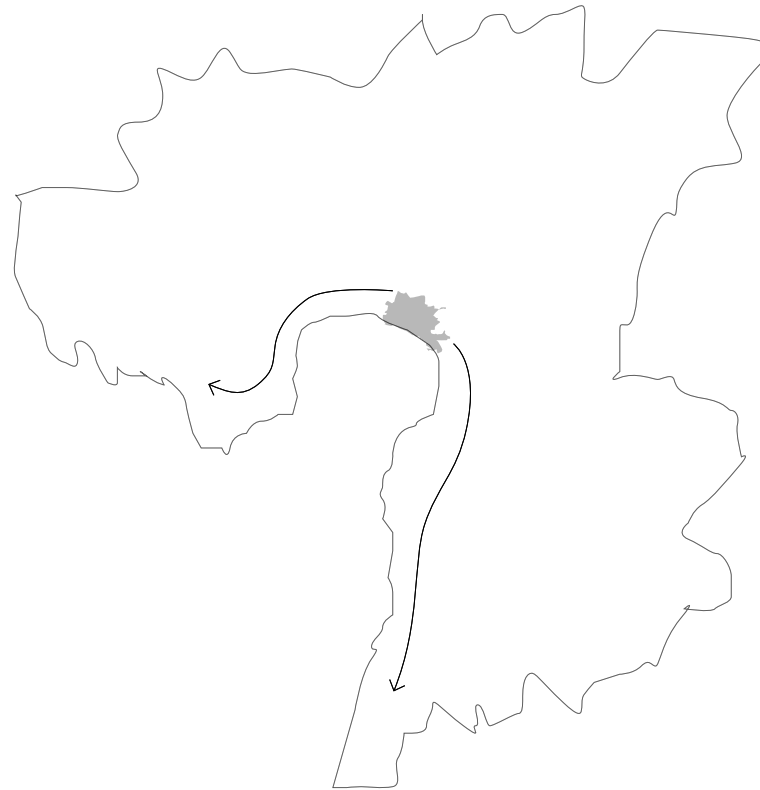


Horisontaalsus
Horizontality



Vertikaalsused
Verticalities

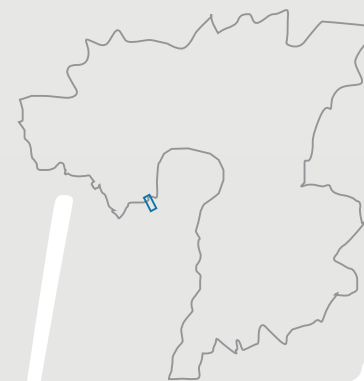
Ääremaastumise tasakaalustamine Pärnu piirkonnas
To balance marginalization of coastal areas in Pärnu region



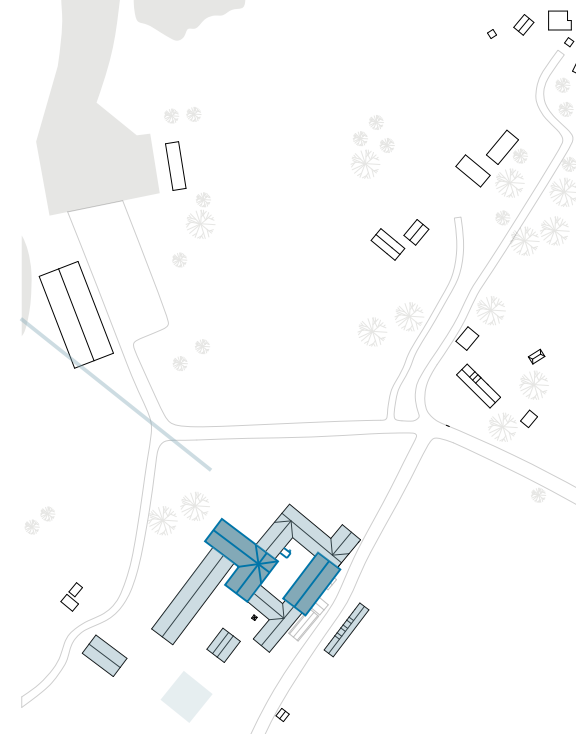
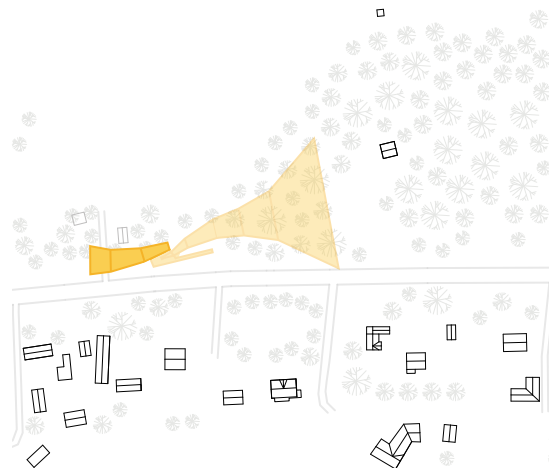
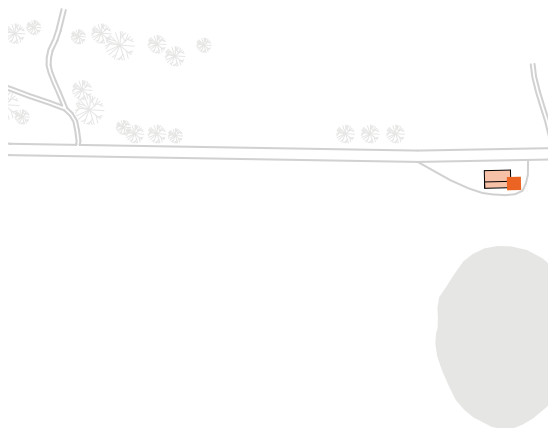


Rannakultuuriruumide aktiveerimisvõimalused

Opportunities for activating coastal spaces



Projektalad Pärnumaa rannikul
Project areas at the coast of Pärnu region



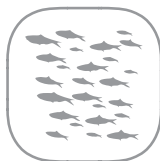
Audru polder

Kabli linnujaam

Liu kaluriküla

Liu rannaküla paaditehasega

Liu coastal village with boatyard



Ranniku kalapüük
Coastal fishing



Kala töötlemine
Fish processing



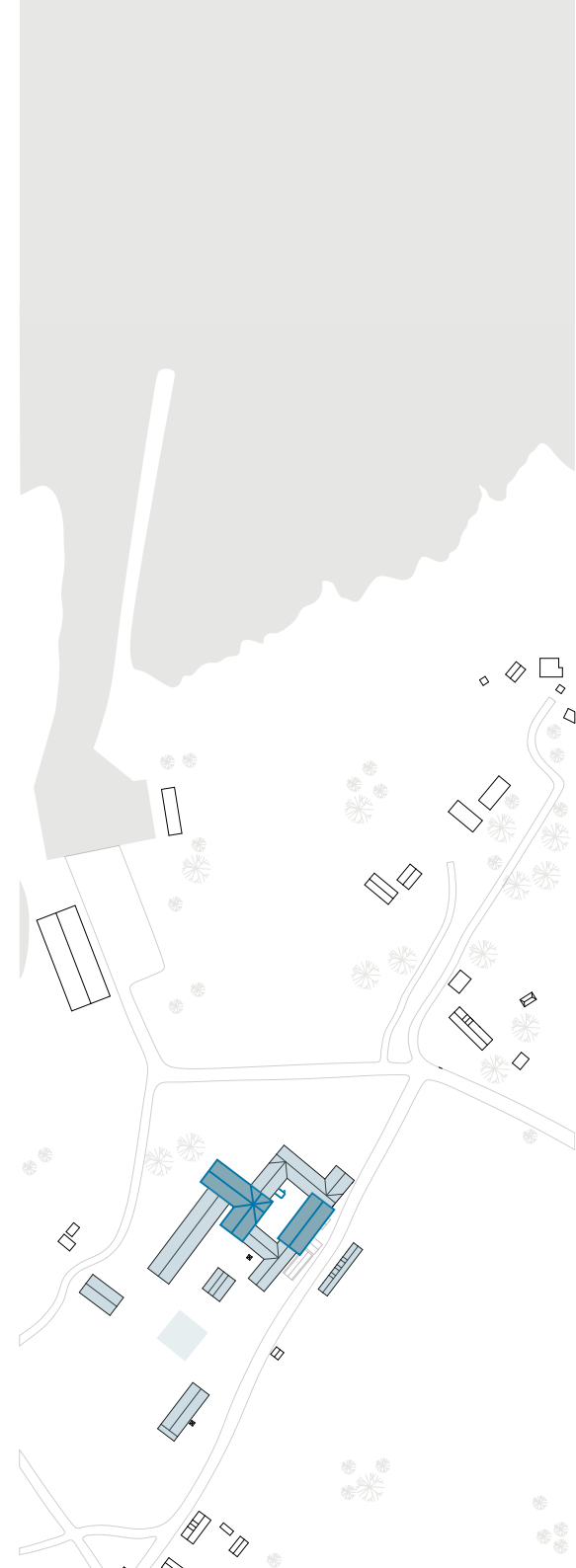
Paadiremont
Boat repair



Paadiehitus
Boat building



Rannikuloodus
Coastal nature



Liu kalasadam
Liu fishing port

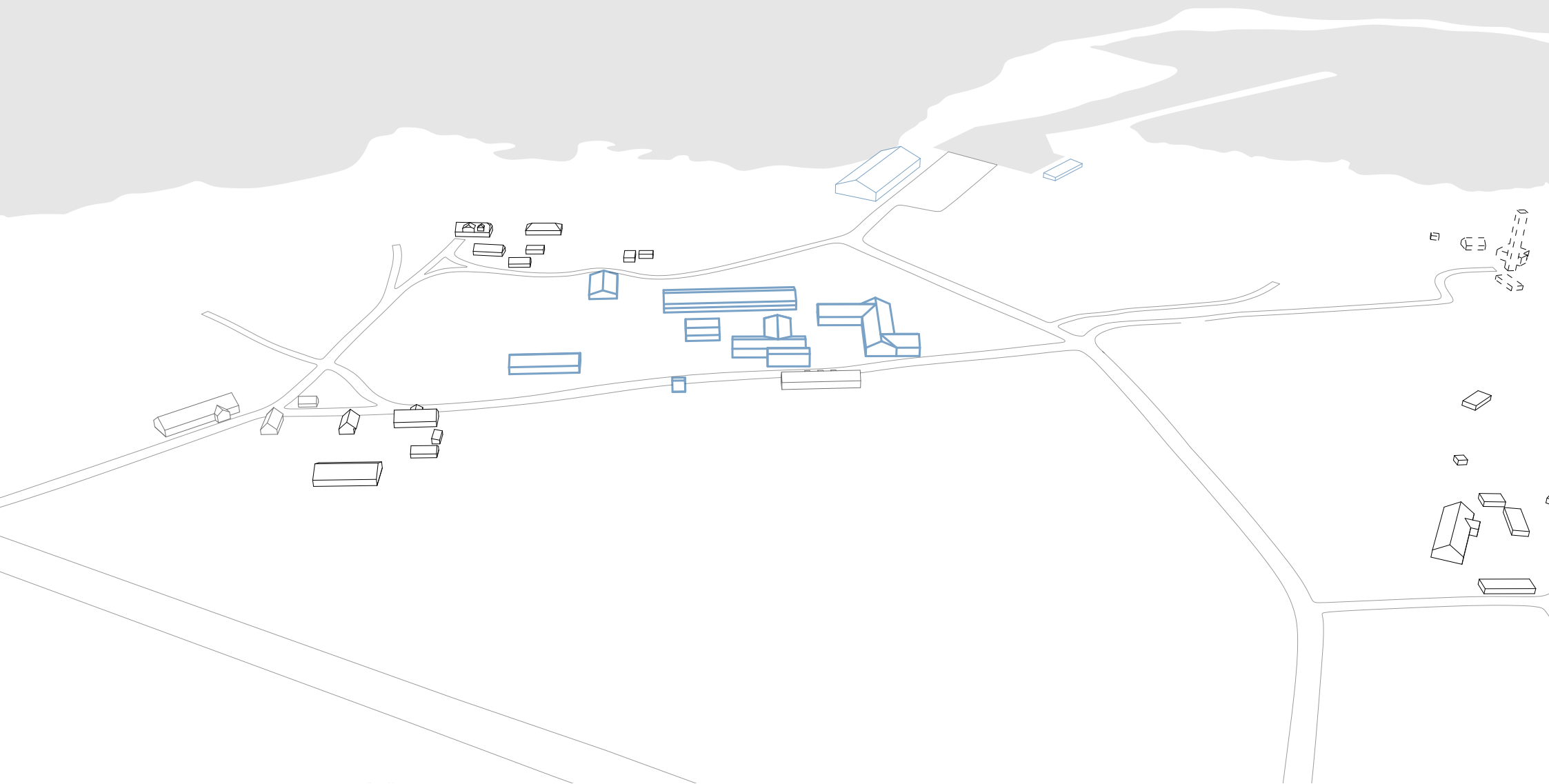




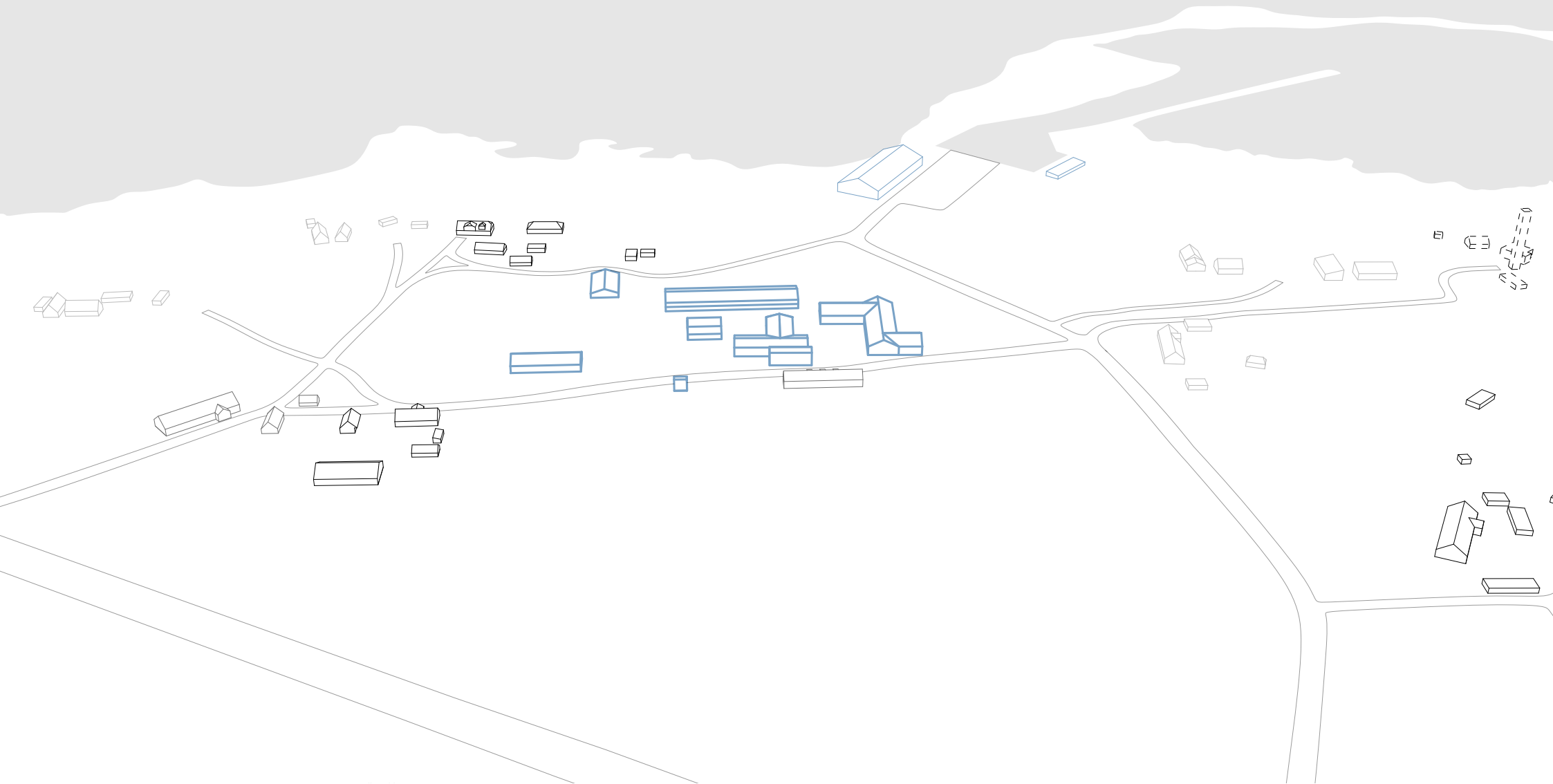
foto: Liina Soosaar

Liu küla kohalike majapidamised

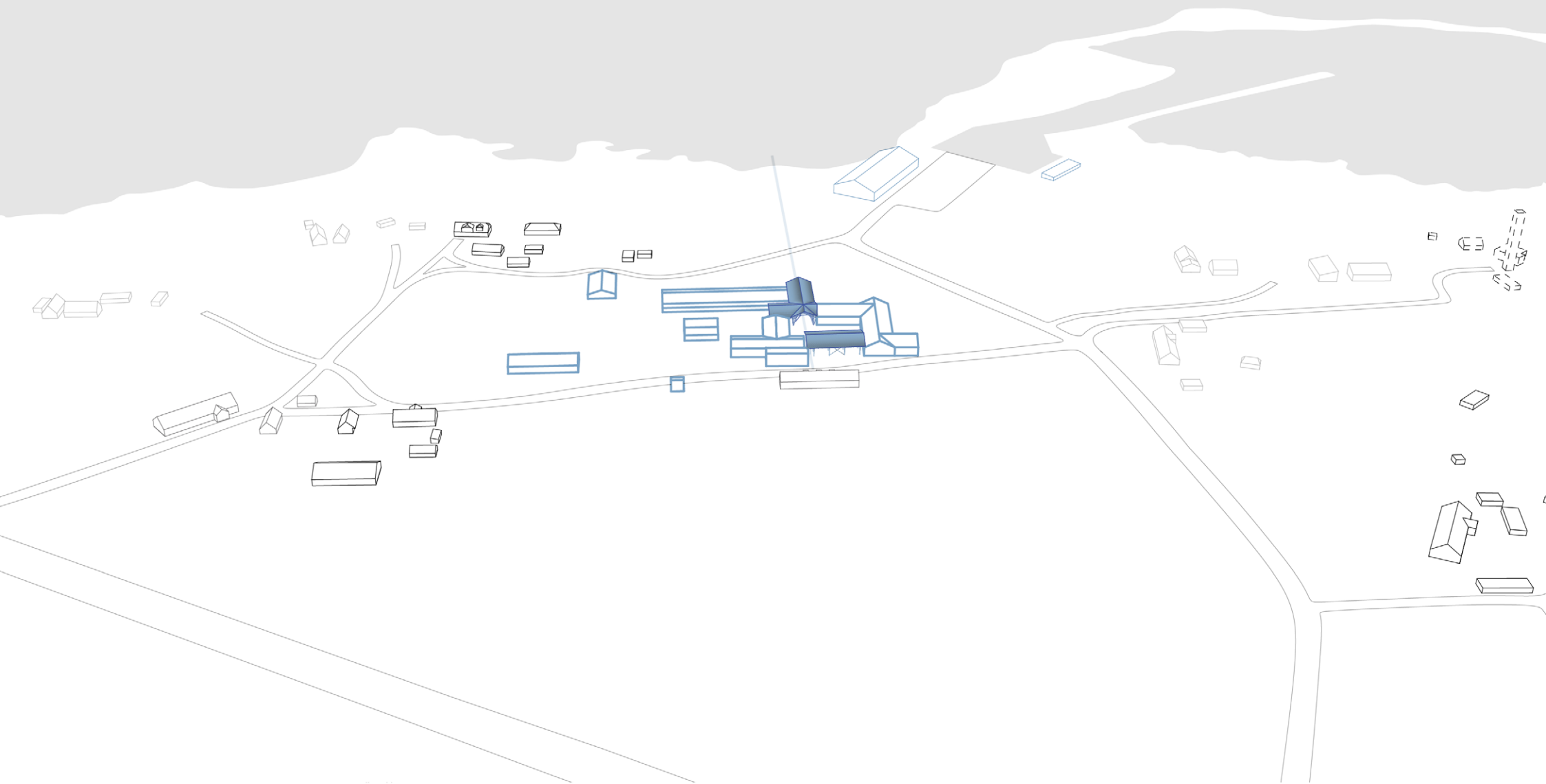
Local households of Liu village



Suvekodud Liu külas
Summer houses in Liu village



Paaditehase kaudu Liu küla elavdamine
Vitalizing Liu village through local boatyard



Hetkeolukord Liu paaditehases
Current situation in Liu boatyard



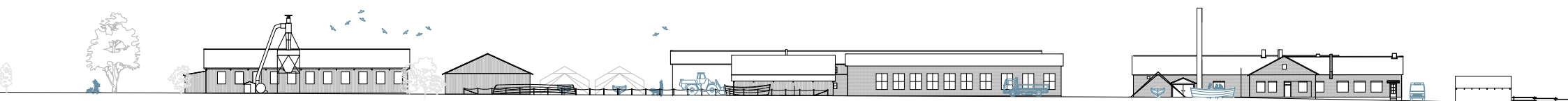
Liu paaditehase aktiveerimine
Activation of Liu boatyard



foto: Liina Soosaar

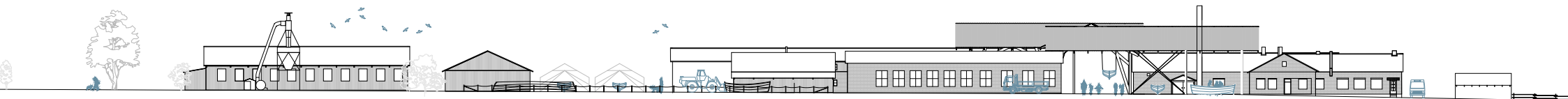
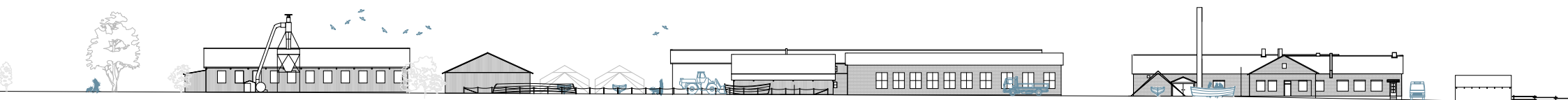
Liu paaditehas praegu

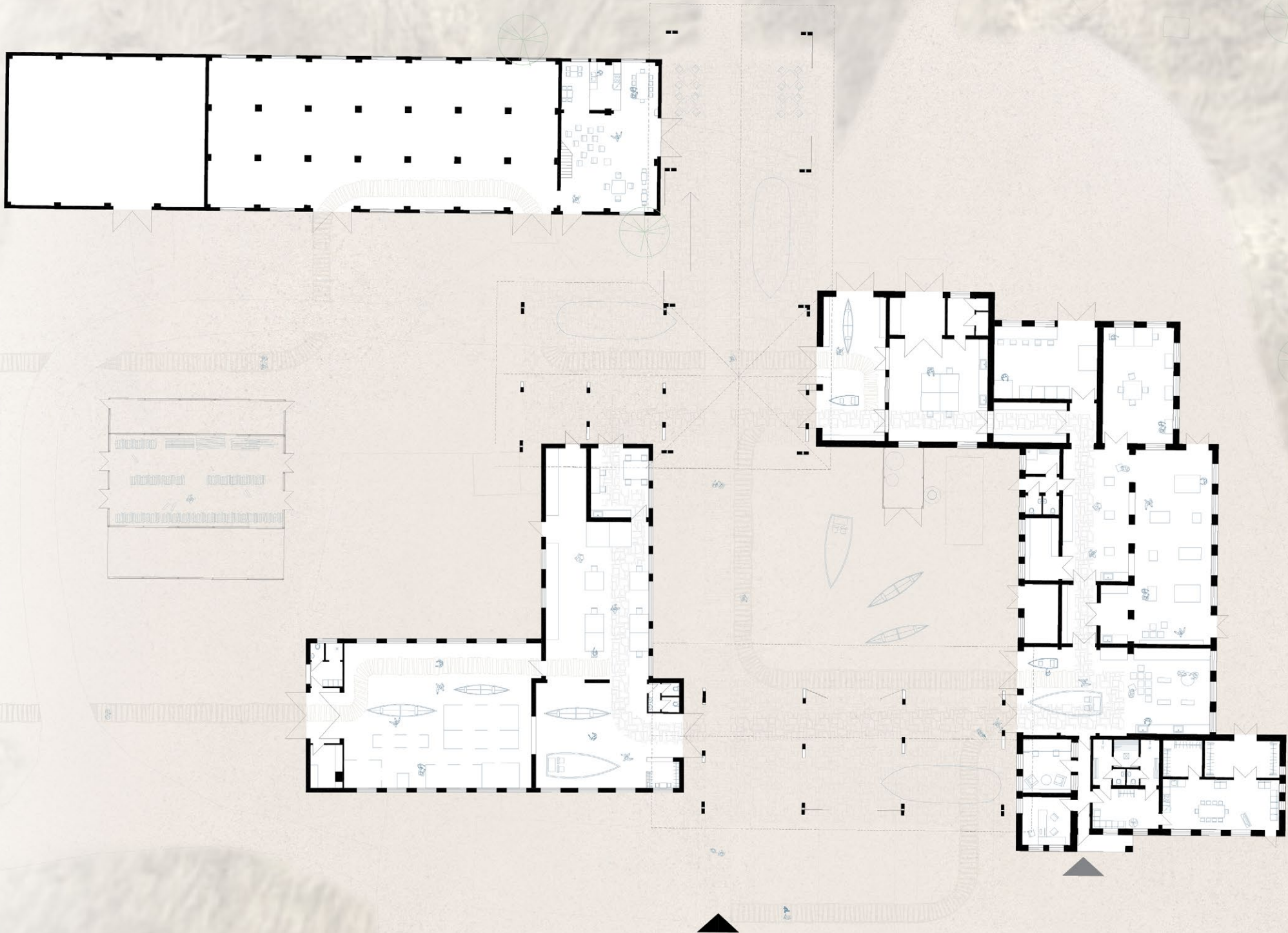
Current situation of Liu boatyard



Liu paaditehase avalikkusele avamine

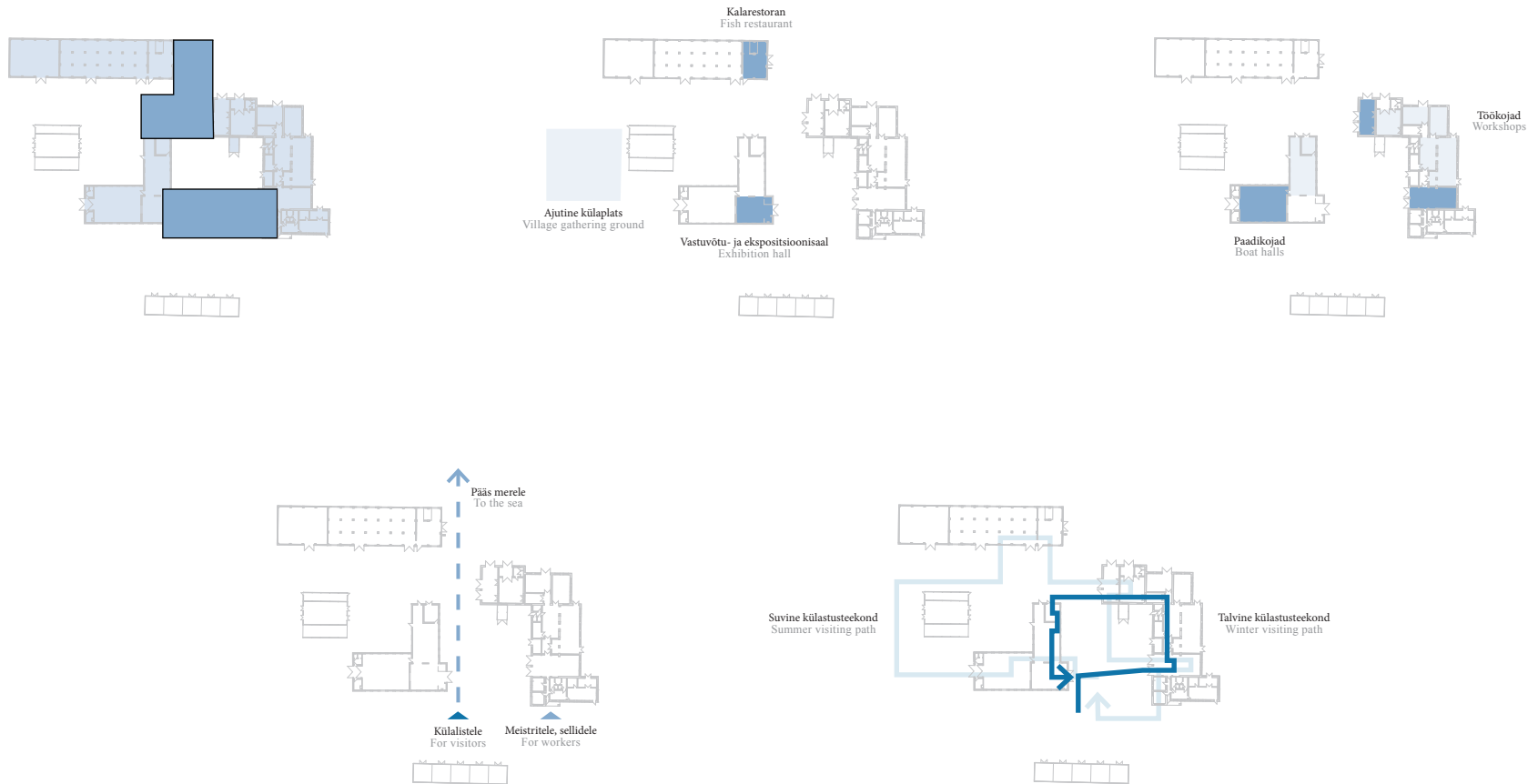
Opening Lui boatyard to the public

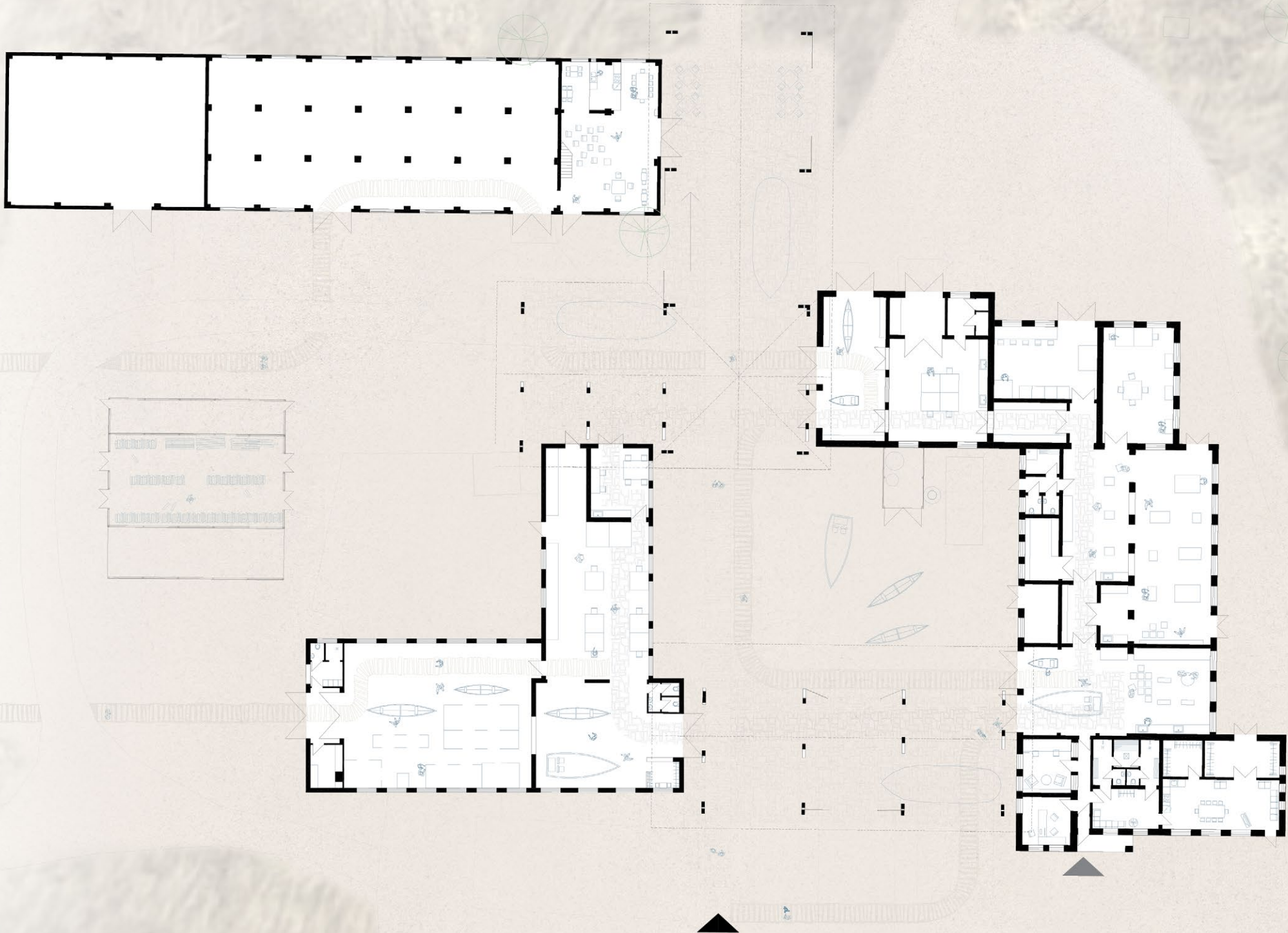




Uue vatud paaditehase ruumide toimimisloogikad

Spatial logic of new opened boatyard





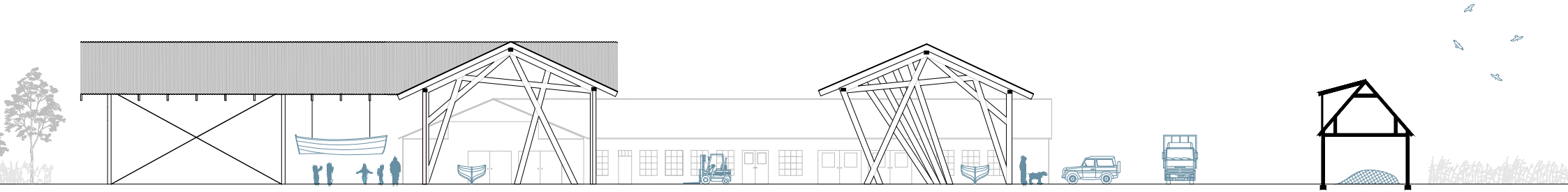
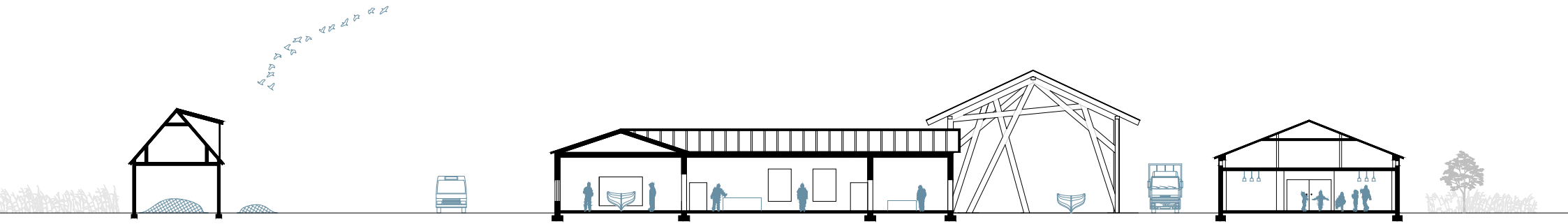






foto: Liina Soosaar



Kabli linnujaam

Kabli bird centre



Linnuvaatlus
Bird watching



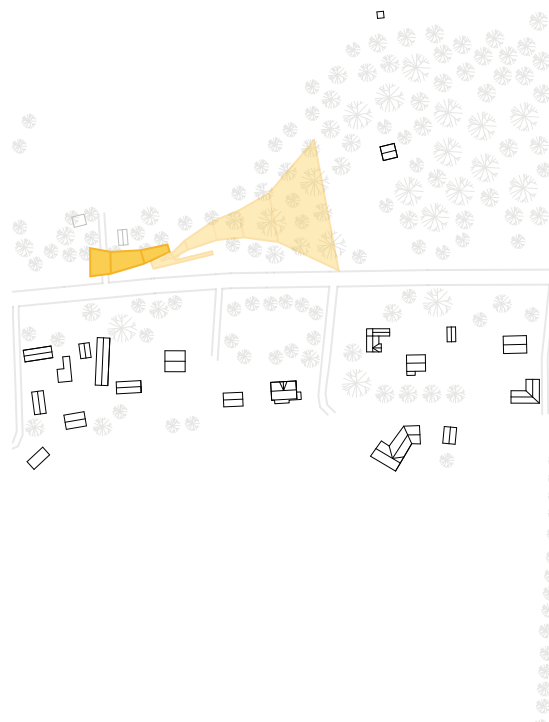
Ornitoloogia
Ornithology

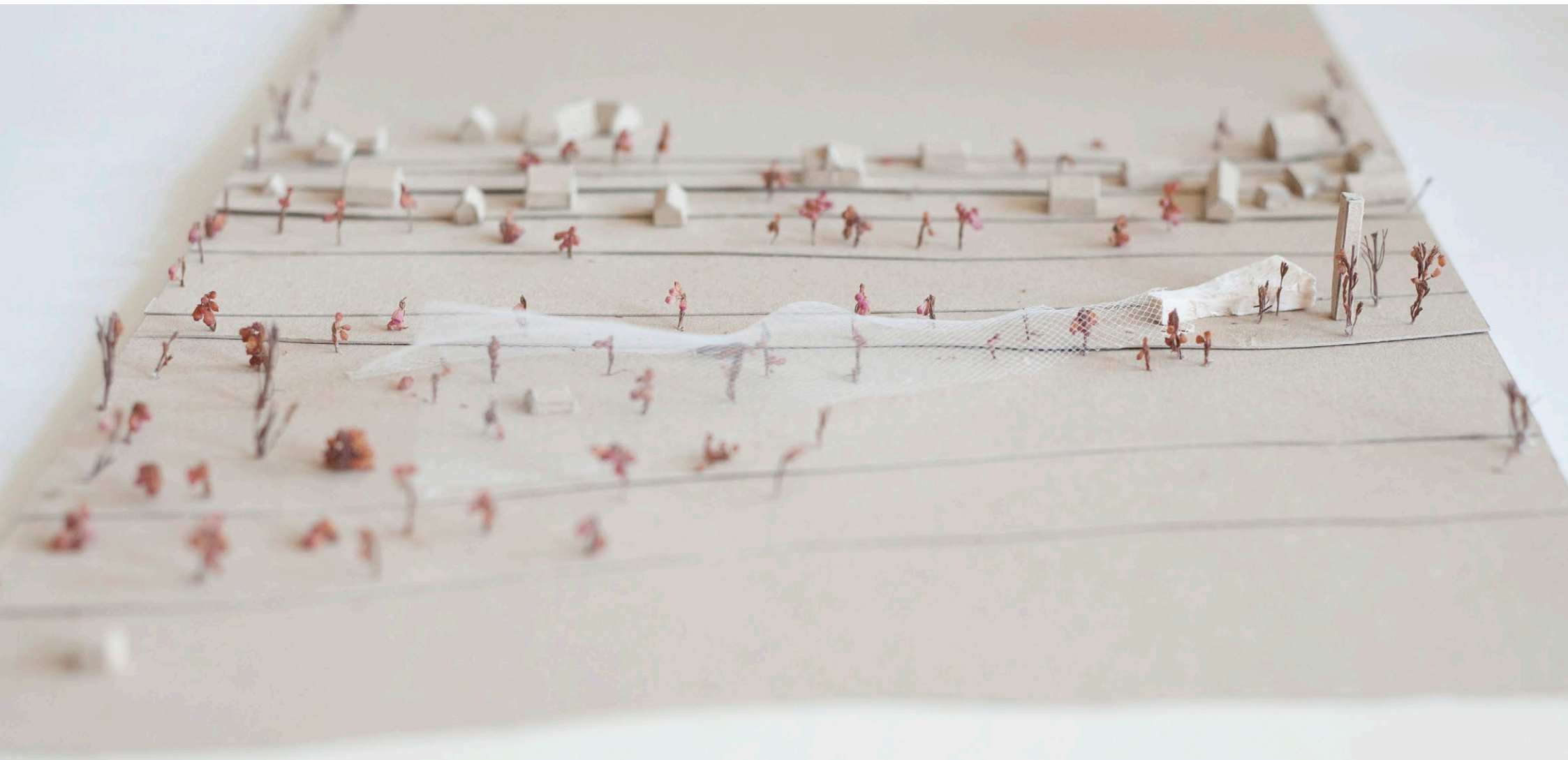


Rannaniit
Coastal meadow



Rannaveised
Coastal cattle



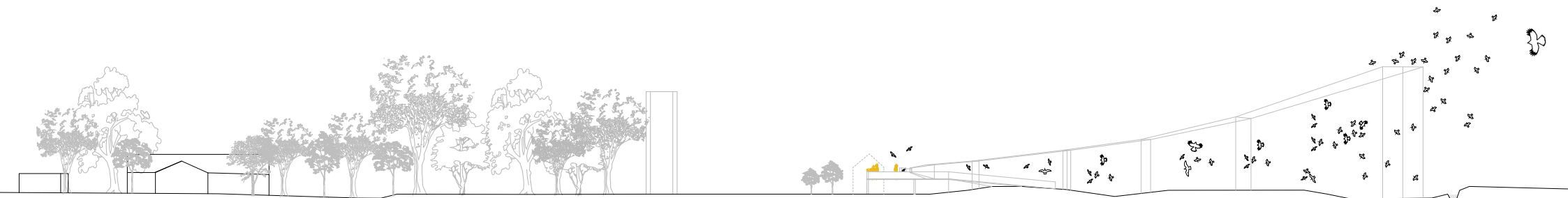


Kabli linnujaam praegu
Kabli bird centre currently



Kabli linnujaama hetkeolukord

Current situation at Kabli bird centre



Kabli linnujaama vajaduspõhine laiendamine

Need-based extension for Kabli bird centre

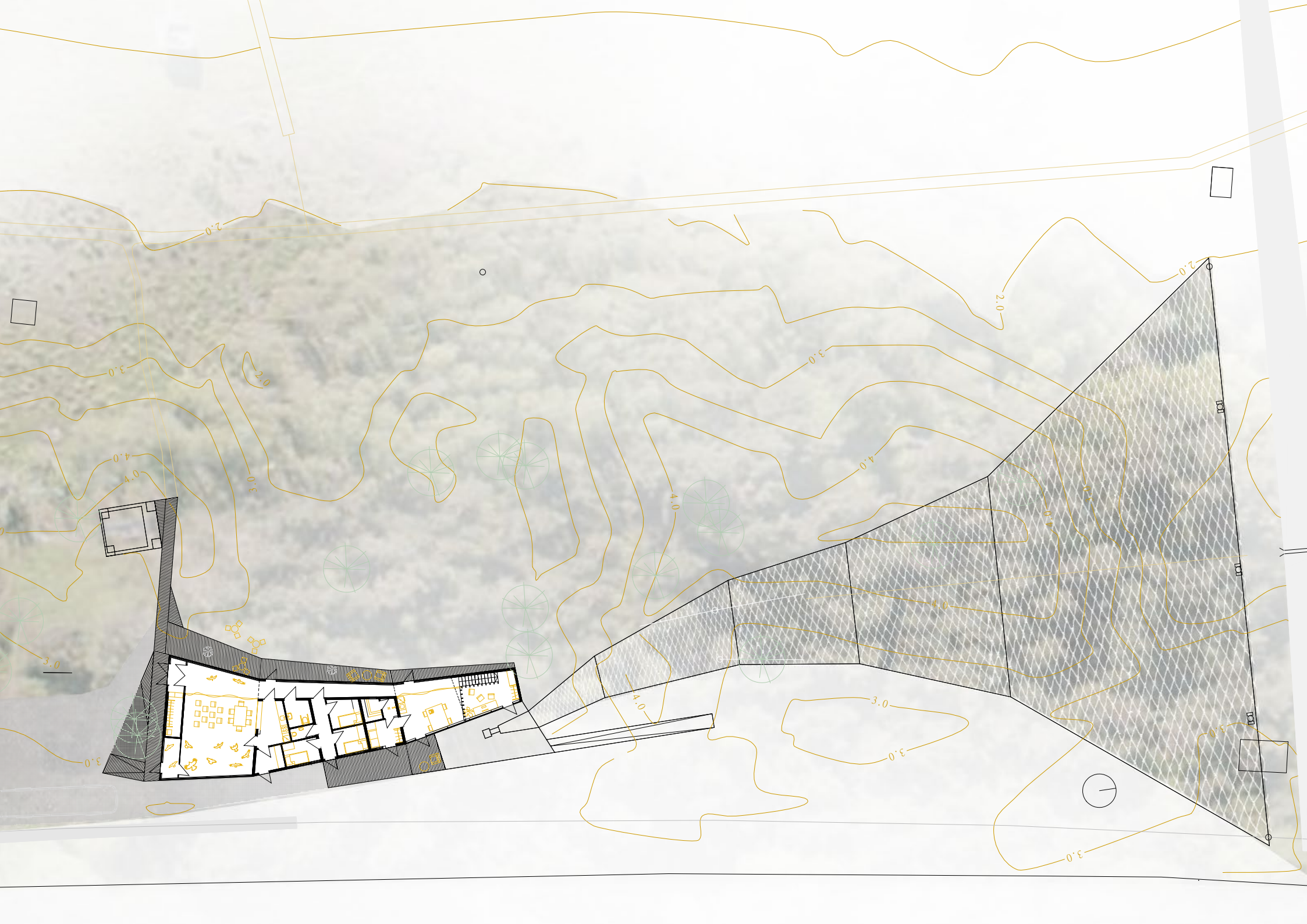




foto: Liina Soosaar

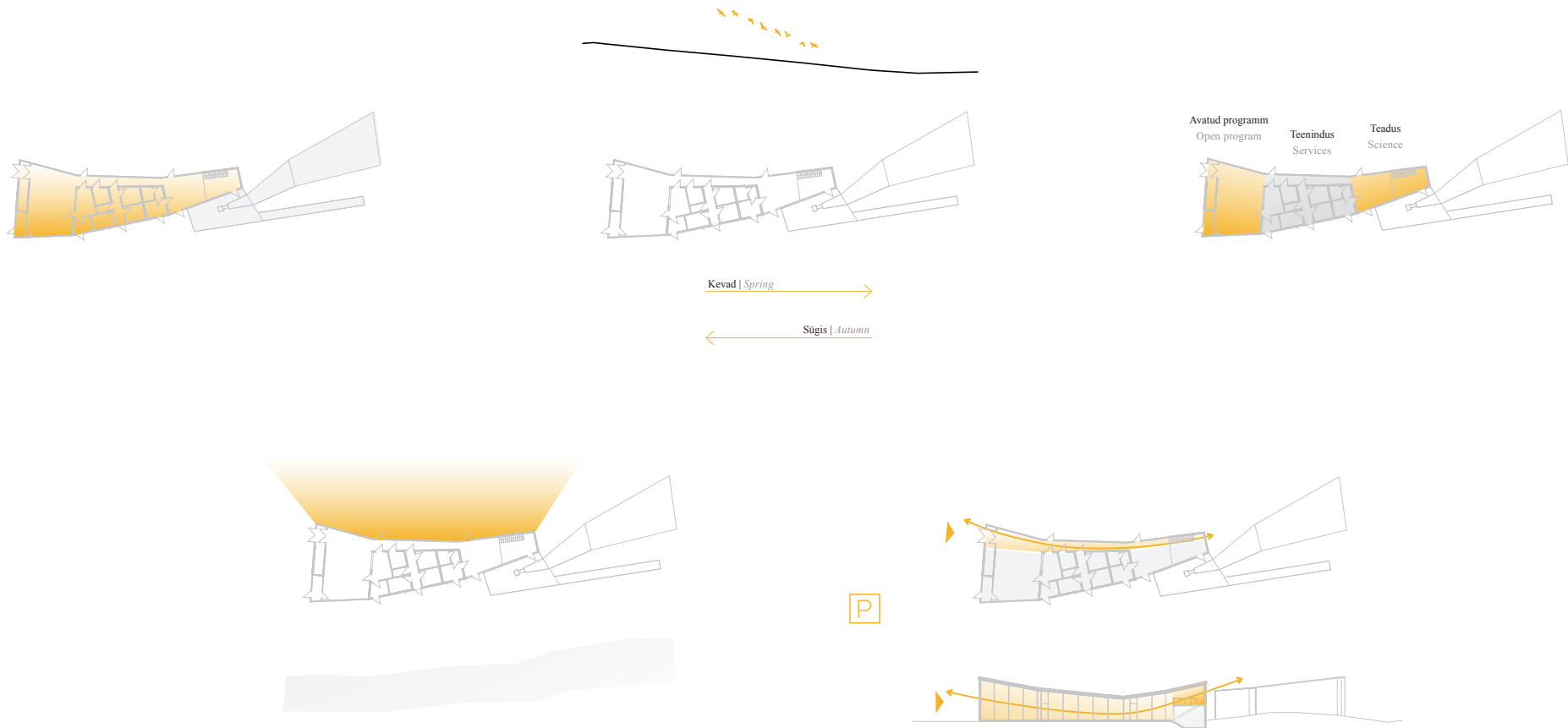


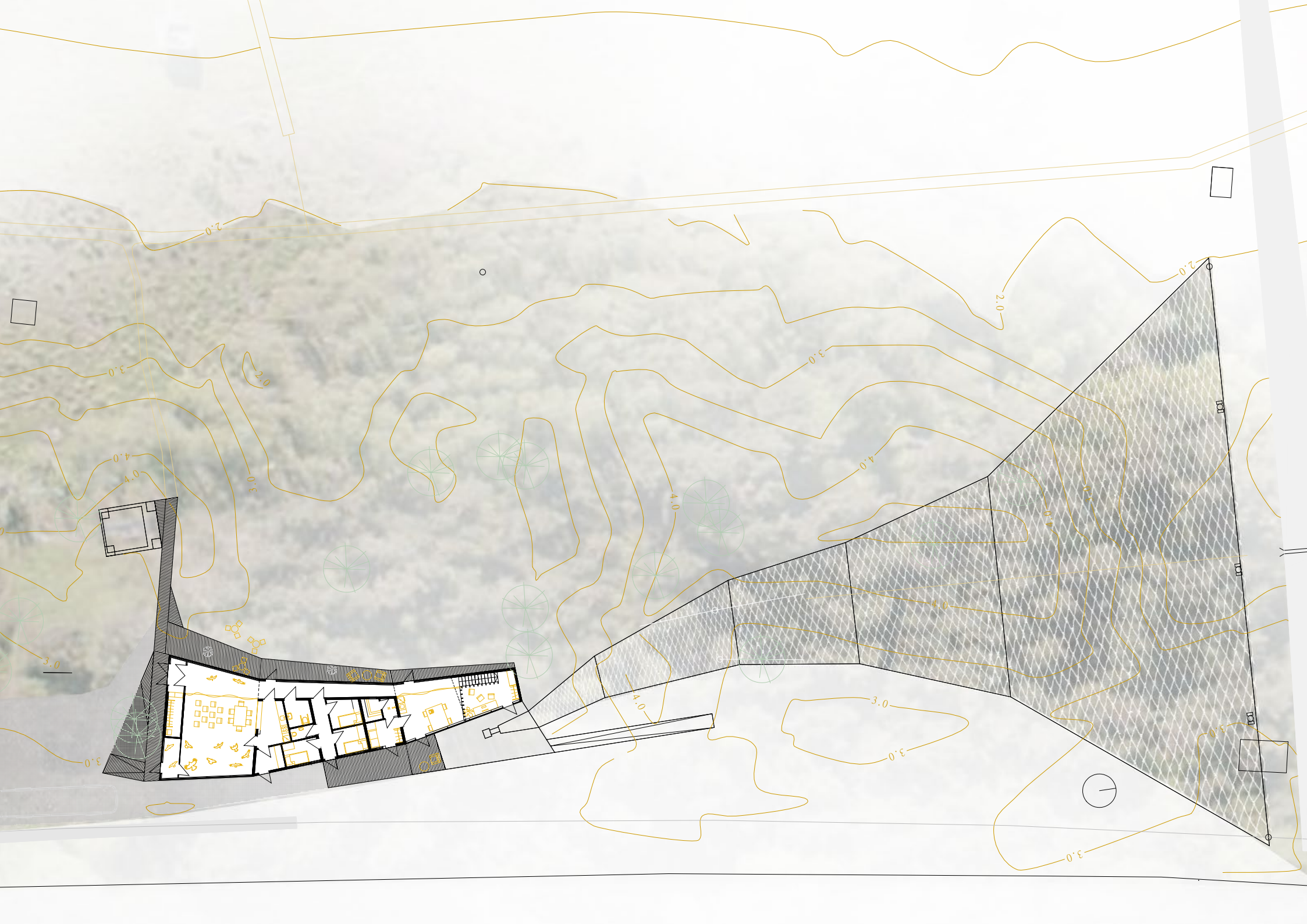
foto: Liina Soosaar

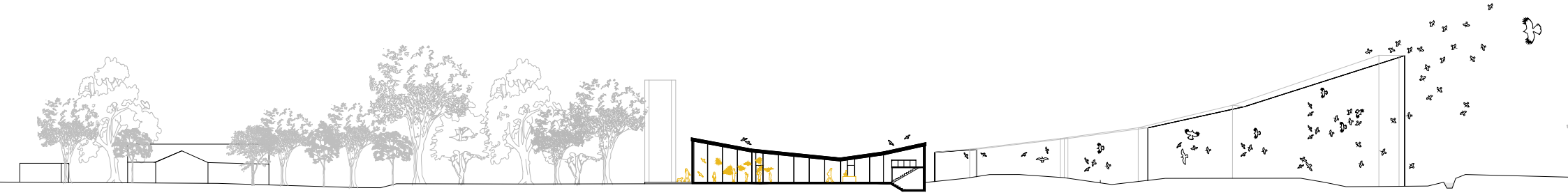


Kabli linnujaama uued ruumielemendid

New spatial elements of Kabli bird centre









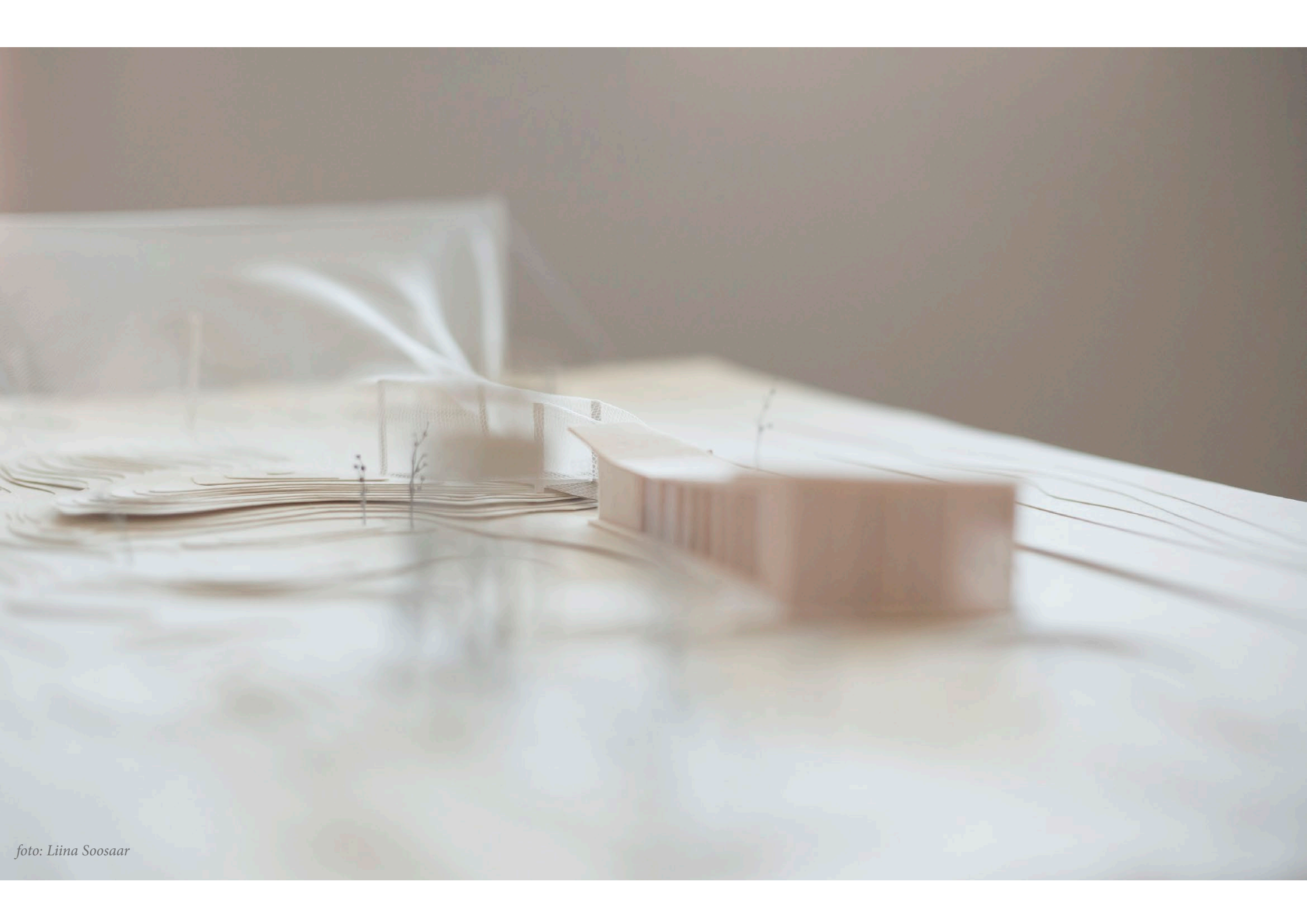
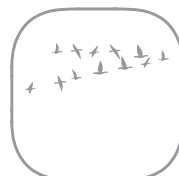


foto: Liina Soosaar



Audru polder
Audru polder



Linnuvaatlus
Bird watching



Roostik
Reed



Ranniku kalapüük
Coastal fishing



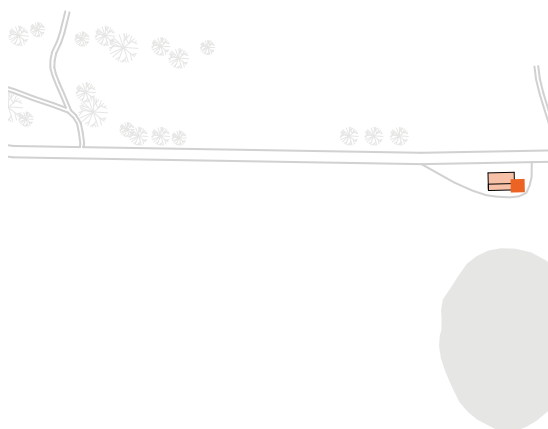
Rannaveised
Coastal cattle



Jää kalapüük
Ice fishing



Hülged
Seals



Rüsi jää Audru poldril
Hammock ice at Audru polder



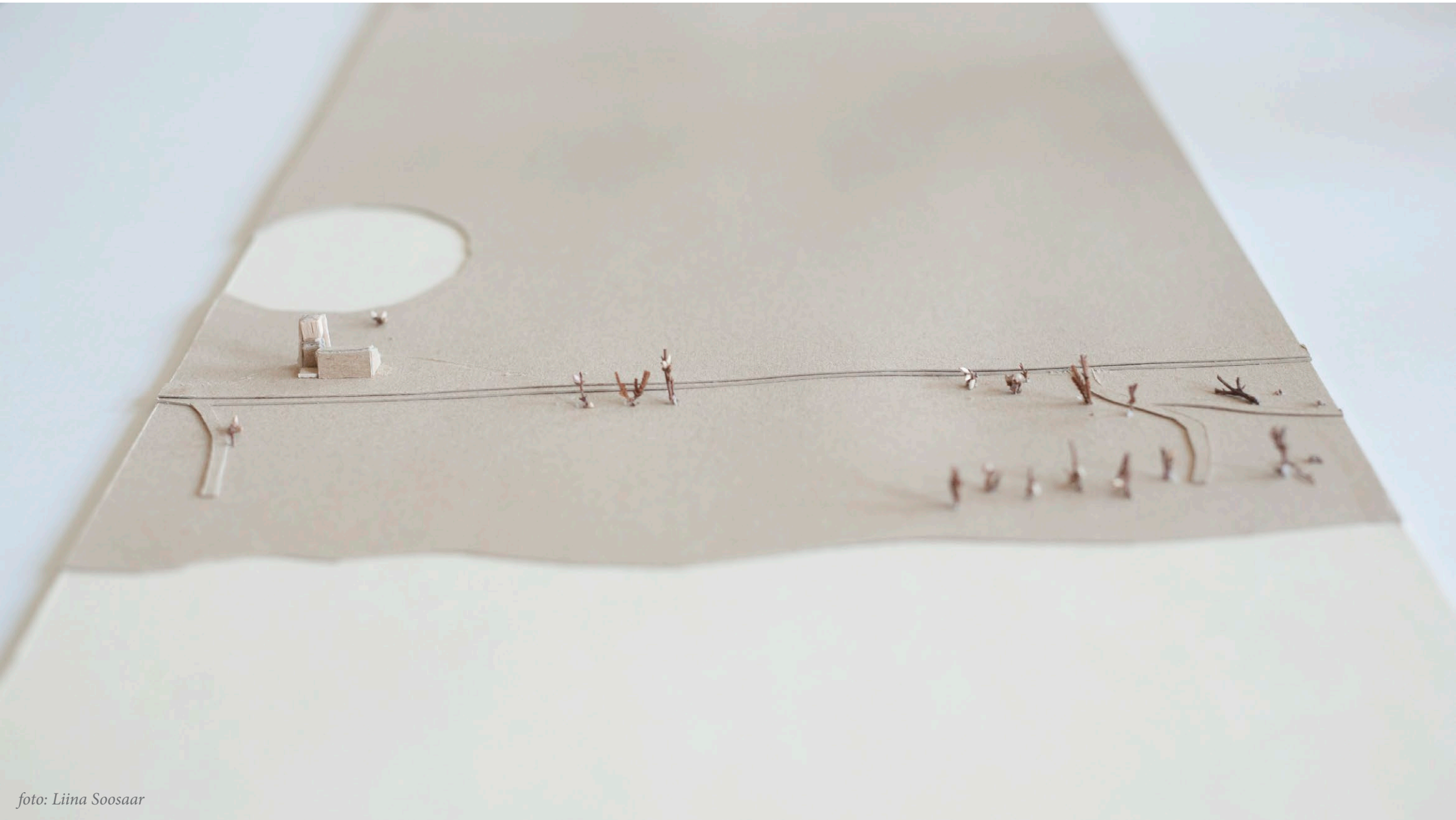


foto: Liina Soosaar

Audru polderi pumbajaam praegu

Current situation of pumphouse at Audru polder

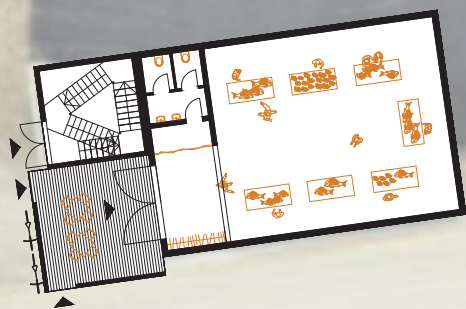


Pumbajaama aktiveeriv ruumilisandus

Activative proposal for pumphouse

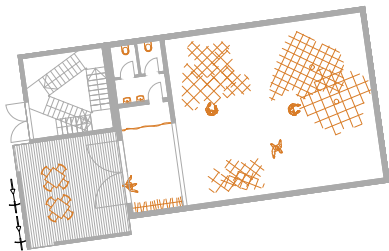


Jääkalurite kalatürg



Poldri pumbajaama vahekasutusvõimalused

Different usages of pump station



Võrgukuur
Net shed



Ornitoloogide töötuba
Workshop space for ornithologists



Kino
Cinema



Etendusel
Performance

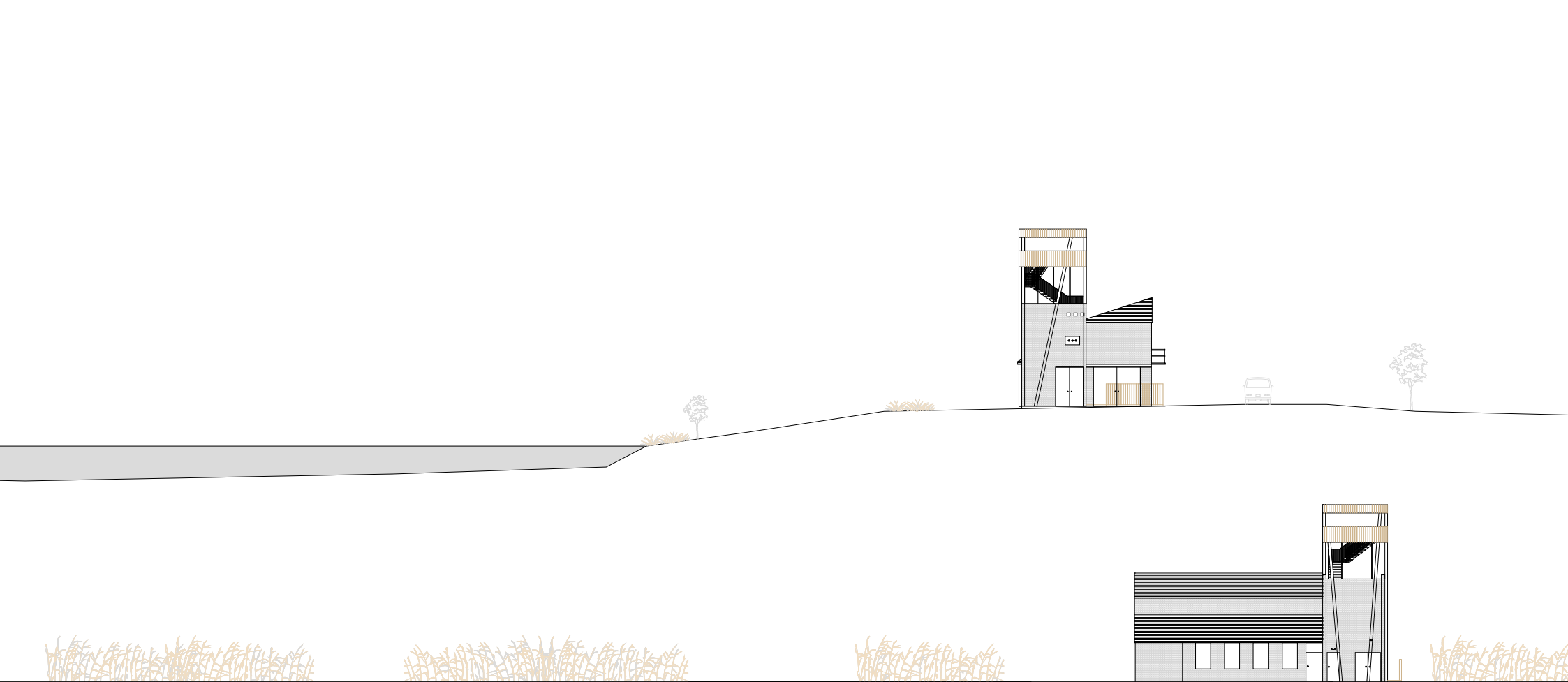




foto: Liina Soosaar





Kokkuvõtt In conclusion

1

Terviklik planeeringuliste tasandite käsitus
A comprehensive approach to planning levels



2

Tasakaalustatud regionaalne areng
Balanced regional development



3

Sotsiaalne / kultuuriline mitmekesisus rannaaladel
Social and cultural diversity coastal areas



